

CITY ATLAS
OF
WATERBURY,
CONNECTICUT.
G. M. HOPKINS.



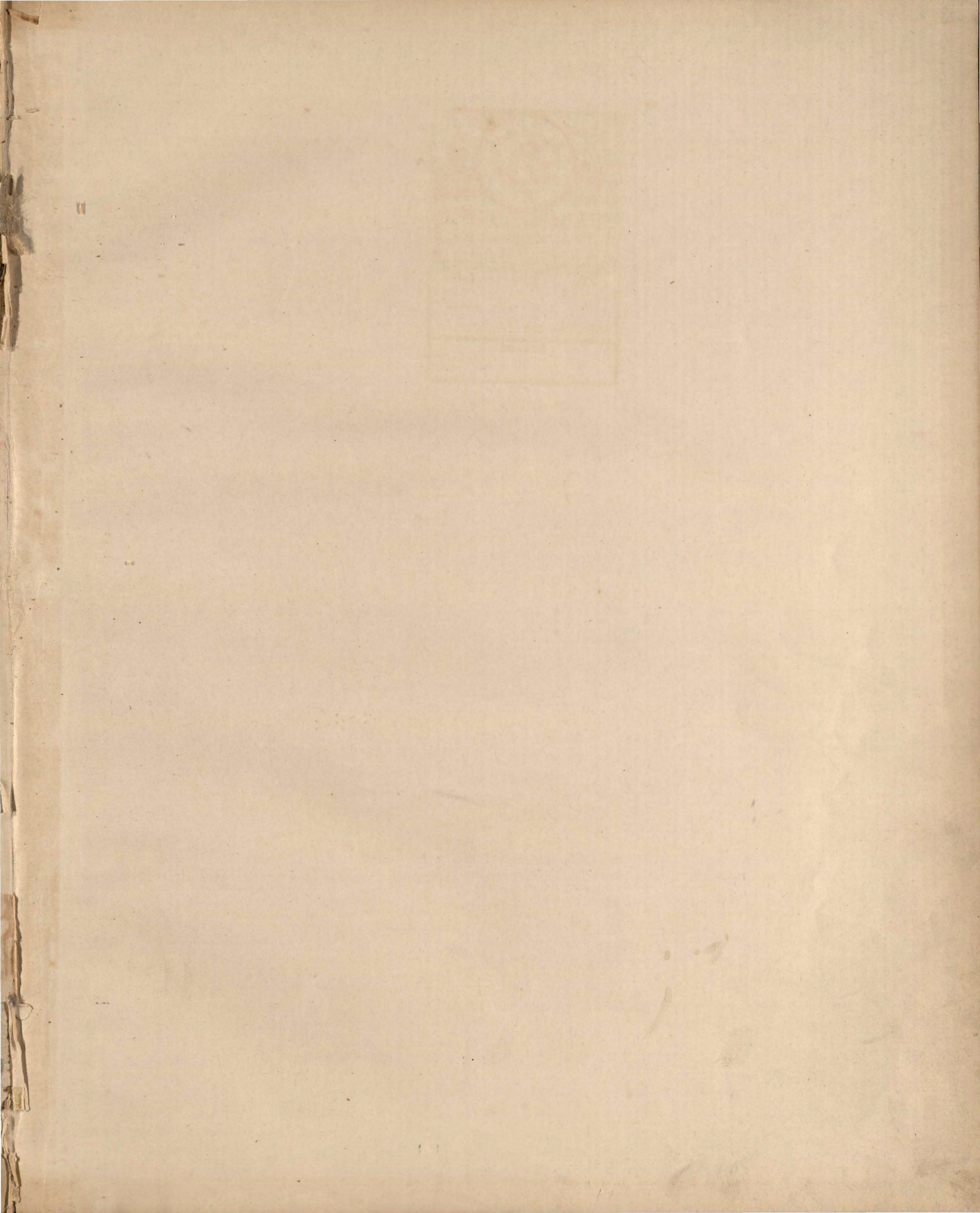
STATE LIBRARY,
- HARTFORD -

CLASS. BOOK. DATE.

912.7462fW29h _____

ACCESSION NO. 15277 _____

SOURCE.



ATLAS

OF THE

CITY OF



QUID AERE PERENNUS

WATERBURY

CONNECTICUT.

Compiled, Drawn and Published from Actual Surveys,

BY

G. M. HOPKINS, C. E.

320 WALNUT STREET

PHILADELPHIA.

1879.

Probate
Vault
G
3784
.W38
H66
1879

F. Bourquin's
Steam Lithographic Press
31 So. Sixth St. Phila.

Entered according to Act of Congress, in the year A. D. 1879, by G. M. Hopkins, in the Office of the Librarian of Congress at Washington.

TABLE OF CONTENTS.

	PAGE.		PAGE.		PAGE.
Plate A, Parts of Wards 2 and 3,	8, 9	Plate II, Part of Ward 1,	36, 37	Plate P, Part of Ward 3,	68, 69
" B. Part of Ward 2,	12, 13	" I, Part of Ward 4,	40, 42	" Q. Parts of Wards 3 and 4,	72, 73
" C, Part of Ward 3,	16, 17	" J, Part of Ward 4,	44, 45	" R, Part of Ward 3,	76, 77
" D, Part of Ward 4,	20, 21	" K, Parts of Wards 3 and 4,	48, 49	" S, Part of Ward 3,	80, 81
" E, Parts of Wards 1 and 2,	24, 25	" L, Part of Ward 3,	52, 53	" T, Part of Ward 2,	84, 85
" F, Part of Ward 2,	28, 29	" M, Part of Ward 1,	56, 57	" U. Part of Ward 2,	88, 89
" G, Part of Ward 2,	32, 33	" N, Parts of Wards 1 and 4,	60, 61	Outline Map,	5
		" O, Part of Ward 4,	64, 65		

BUSINESS NOTICES.

APOTHECARIES.

APOTHECARIES' HALL CO.
Established 1849. Druggists, Wholesale and Retail Dealers in Acids, Chemicals, Paints, Oils, Glass, &c.
Exchange place.

ARCHITECT.

ROBERT W. HILL,
Architect,
9 Baldwin's Block, Bank street.

ATTORNEYS AT LAW.

THOMAS DONAHUE,
Attorney at Law,
Office, Atwater Block.

CHAS. W. GILLETTE,
Attorney at Law,
Office, Burritt Block.

KELLOGG & TERRY,
Attorneys at Law,
Office, Baldwin's Block.

GREENE KENDRICK,
Attorney at Law,
3 Irving Block.

CHAS. G. ROOT,
Attorney at Law,
5 Baldwin's Block.

D. F. WEBSTER,
Attorney at Law,
5 Irving Block.

WEBSTER & O'NEIL,
Attorneys at Law,
Baldwin's Block.

BANKS.

DIME SAVINGS BANK,
20 North Main street,
E. Leavenworth, Prest.
G. S. Parsons, Secy. and Treas.

WATERBURY NATIONAL BANK,
118 Bank street.
Capital \$500,000.
A. S. Chase, Prest.
A. M. Blakesley, Cashier.

WATERBURY SAVINGS BANK,
Centre square, cor. North Main.
Willard Spencer, Prest.
F. J. Kingsbury, Sec. and Treas.

BUILDERS.

GEO. GILBERT. **R. L. BRONSON.**
GEO. GILBERT & CO.
Masons and Builders, also Dealers in Brick, Lime, Cement, Granite and North River Stone,
Office, with Warner's City Express, bet. the Post Office and Baptist Church, 75 Bank street.

A. I. CHATFIELD. **G. S. CHATFIELD.**
A. I. & G. S. CHATFIELD,
(Formerly with H. P. and H. K. Chatfield.)
Masons and Builders, and Dealers in Brick, Lime, Cement, Plaster, Hair, White Sand, Centre Pieces, &c.
All work intrusted to our care will be done promptly and in workman-like manner.
Chatfield's Block, Canal st. near Meadow.

ASA C. PECK.
Builder and Jobber, Dealer in Pine, Spruce and Hemlock Lumber.
Building, Jobbing and Repairing done with despatch and on reasonable terms by contract or by the day.
Office, Bank street.

F. B. SMITH,
Carpenter and Builder.
Mouldings, Sawing and Turning.
Every description of Wood Work promptly executed.
Benedict street, near Meadow.

CIVIL ENGINEERS.

WELTON & BONNETT,
Civil Engineers, City and County Surveyors.
Office, No. 4 Baldwin's Block.
N. J. WELTON. **WM. W. BONNETT.**

Clothing and Furnishing Goods.

JOHN MULLINGS & CO.
Tailors and Gents' Furnishers,
65 Bank street.

CHURCH.

CHURCH OF THE IMMACULATE CONCEPTION,
Rev. Lawrence Walsh, Pastor.
Residence, 59 East Main street.

FREIGHT FORWARDING.

L. BEARDSLEY,
Jobbing, Teaming and Forwarding of Freight.
Pianos Moved by Reynolds's Patent Piano Mover.
Baled Hay for Sale.
Office in Naugatuck Railroad Freight Depot. Stabling, cor. Field and Meadow streets.

LIBRARY.

SILAS BRONSON LIBRARY,
Instituted 1870.
Cor. Centre Square and Leavenworth st.
Willard Spencer, President.
T. I. Driggs, Secretary.
H. F. Bassett, Librarian.
John Fitzpatrick, Assistant Librarian.

LUMBER.

AUSTIN L. PECK,
Wholesale and Retail Dealer in Lumber, Doors, Windows and Blinds,
23 Meadow street.
Lumber by Car Loads at Wholesale Prices

WATERBURY LUMBER AND COAL COMPANY,

Dealers in Eastern and Western Lumber, Sashes, Doors, Blinds, Turned Work, and Dressed Lumber of all kinds; also in Coal, at Wholesale and Retail.
Office, near Railroad Station.
A. E. Rice, Prest. **F. B. Rice, Secy.**

H. P. Strong, Prest. **W. F. Arnold, Secy.**
F. G. Platt, Treas.

CITY LUMBER AND COAL CO.
(Successors to Wm. H. Holmes)
Yard, corner Willow and Grand streets.

MANUFACTURERS.

THE ABBOTT & ROOT BRASS CO.
Manufacturers of Special Mixtures and Qualities of Metals and Metallic Alloys Extra Fine English Copper and Brass for Drawing and Spinning purposes.
Oreide and Jeweller's Metal of finest quality. Aluminium Bronze of every grade; Bronzo Box Metal; White Silvesta Nickel, for extra fine casting; Extra Malleable and Tough Nickel Alloy, from 1 per cent. to 50 per cent. Nickel, for Spinning. (will not fire-crack.)
Charles Benedict, Prest. and Treas.
Charles Dickinson, Secy.

BENEDICT AND BURNHAM MANUFACTURING CO.
Brass, German Silver and Copper Rolling and Wire Mills.

BROWN & BROTHERS,

81 Chambers st., N. Y.
Manufacturers of Gold Finished High Brass, Low Brass, Gilding Metal, German Silver and Copper in all forms of Roll, Sheet, Wire, Tubing and Rivets, Plain and Fancy Designs. O. W. Minard's Patent Smooth Rolled Brass and Copper Kettles, Wash Basins, &c.

BLAKE & JOHNSON,

Builders of Machinery, Rolling Mills, with Hardened Cast Steel Rolls. Rolls of any size and form required, Cutting-out and Drawing Presses, Foot Presses, Cartridge Machinery, Rivet Machines, Slitting Machines, and a great variety of Machines to order.

H. C. GRIGGS,
Manufacturer of Metal Buttons,
North Main street.

HOLMES, BOOTH & HAYDENS,

Manufacturers of Brass and Copper Wire, Brass and Iron Jack Chains, Silver Plated Metal, Tubing, Brass Door Rail, Sheet Brass, Copper, German Silver, Silver Plated Ware, Copper Rivets & Burs, Kerosene Burners, Lamp Trimming, &c.
40 Chambers st., N. Y. Manufactories Waterbury, Conn., and 18 Federal st., Boston, Mass.

WATERBURY CLOCK COMPANY,

Manufacturers of Clocks, Time-Pieces, Regulators, Dials, Clock Cases, Tablets, &c.
Salesroom, 4 Courtland st., New York City.
Chas. Benedict, Prest. **M. Bailey, Treas.**
H. L. Wade, Secy.

C. P. Goss, Treas. **F. J. Kingsbury, Pres.**
M. L. Sperry, Secy.
Established 1802.

THE SCOVILL MANUFACTURING COMPANY,

Manufacturers of Sheet Brass and German Silver; Wire and Tubing; Gold, Platinum, and Silver-Plated Metal; Piano Forte, Ship and Wrought Brass Butt Hinges; Military, Naval and Livery Buttons; Covered and Fancy Dress Buttons of all kinds; Coal Oil Burners, Lamps and Lamp Trimmings; Plated and German Silver Thimbles, and Importers and Dealers in Photographic Goods of all descriptions.
Depots—419 Broome st., New York.
112 Federal st., Boston.
47 La Salle st., Chicago.

THE PLUME & ATWOOD MANUFACTURING COMPANY,

Manufacturers of Sheet Brass, German Silver and Wire; Kerosene Burners and Lamp Trimmings; Copper and Brass Rivets and Burs; Printers' Brass Rule Strips and Galleys, &c.
Factories, Waterbury, Conn.
Rolling and Wire Mills, Thomaston, Conn.
Stores, 89 Chambers street, N. Y., and 13 Federal street, Boston.
J. C. Booth, Prest. **D. S. Plume, Treas.**
L. J. Atwood, Secy.

THE FARREL FOUNDRY AND MACHINE CO.

Manufacturers of Chilled Rolls, Iron, Brass and Copper Rolling Mill Machinery,
Ansonia, Conn.
Franklin Farrel, Prest., Ansonia.
Alton Farrel, Secy. Ansonia.
E. C. Lewis, Agent and Treas., Waterbury.

J. E. GAYLORD,

Gray Iron Castings, of every description.
Foundry, Benedict and Meadow sts.

WATERBURY BRASS COMPANY,

Proprietors of the American Flask and Cap Company,
Store, 296 Broadway, N. Y.

Manufacturers of Brass; Gilding Metal, Copper and German Silver, (in Sheets, Rolls, Tubing or Wire); Patent Rolled Brass Kettles and Wash Basins; Copper and Brass Rivets and Burs; Powder Flasks, Shot Belts and Pouches; Game Bags, Gun Wads and Percussion Caps; Measuring Tapes, Metallic Elelets, and Small Brass Wares of every description.

WATERBURY BUCKLE CO.

Manufacturers of Buckles, and every variety of Fancy Articles.

Established 1846. **T. I. Driggs, Sec. & Tr.**

AMERICAN PIN COMPANY,
Manufacturers of all kinds of Pins and Hooks and Eyes.

THE PLATT BROS. & CO.

Manufacturers of Rolled, Zinc and Pant Buttons.
Also Baking Japans and Liquid Dryers, &c
21 Brown street.

D. B. Hamilton, Treas. and Managers,
C. A. Hamilton, Secy.
Incorporated 1859.

ROGERS & BROTHER,

Manufacturers of German Silver and Silver Plated Goods, Spoons, Forks, Knives, &c., in great variety of patterns and unrivalled quality, sold by first-class Jewelry, Hardware and Crockery Dealers.
Factory and Office, Silver st., Waterbury, Conn., New York Store, 690 Broadway.

THE MATTHEWS & STANLEY MFG. CO.

Manufacturers of Carriage, Harness and Saddle Trimmings, Whip Sockets with Matthew's Pat. Fastener, Warren's Patent Switch Protectors, Whip Racks. Agents for Elm City Pad Screws.

WATERBURY NEEDLE CO.

Manufacturers of Sewing Machine Needles, for all Standard Machines.

Real Estate and Insurance.

C. S. ABBOTT & CO.
Real Estate and Fire Insurance.

WILLIAM C. ATWATER,
Insurance Agency,
At Holmes and Parson's Banking Office, Insurance effected in first class Companies, Rates determined and Losses paid at this Office.

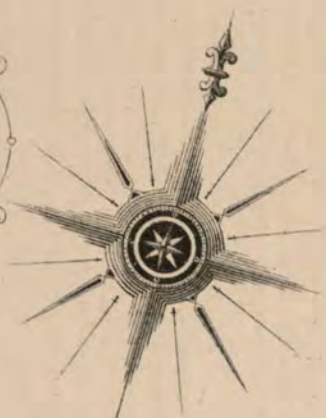
WILLIAM BROWN,
Stores, Offices and Tenements to Rent,
Office, Brown's Tontine Corner. P. O. Box, 367.

GEO. L. ROBINSON & CO.
Real Estate and Insurance Agency,
Brown's Block, Room No. 4, No. 12 South Main street.

J. W. SMITH. **E. T. ROOT.**
Established 1853.

SMITH & ROOT,
Waterbury Fire Insurance Agency,
Aggregate Capital, \$120,000.00.
Office, Waterbury National Bank Building, 118 Bank st., up stairs.
All Losses paid at this Agency.

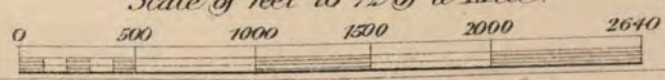
INDEX MAP
OF
WATERBURY.
CONNECTICUT.



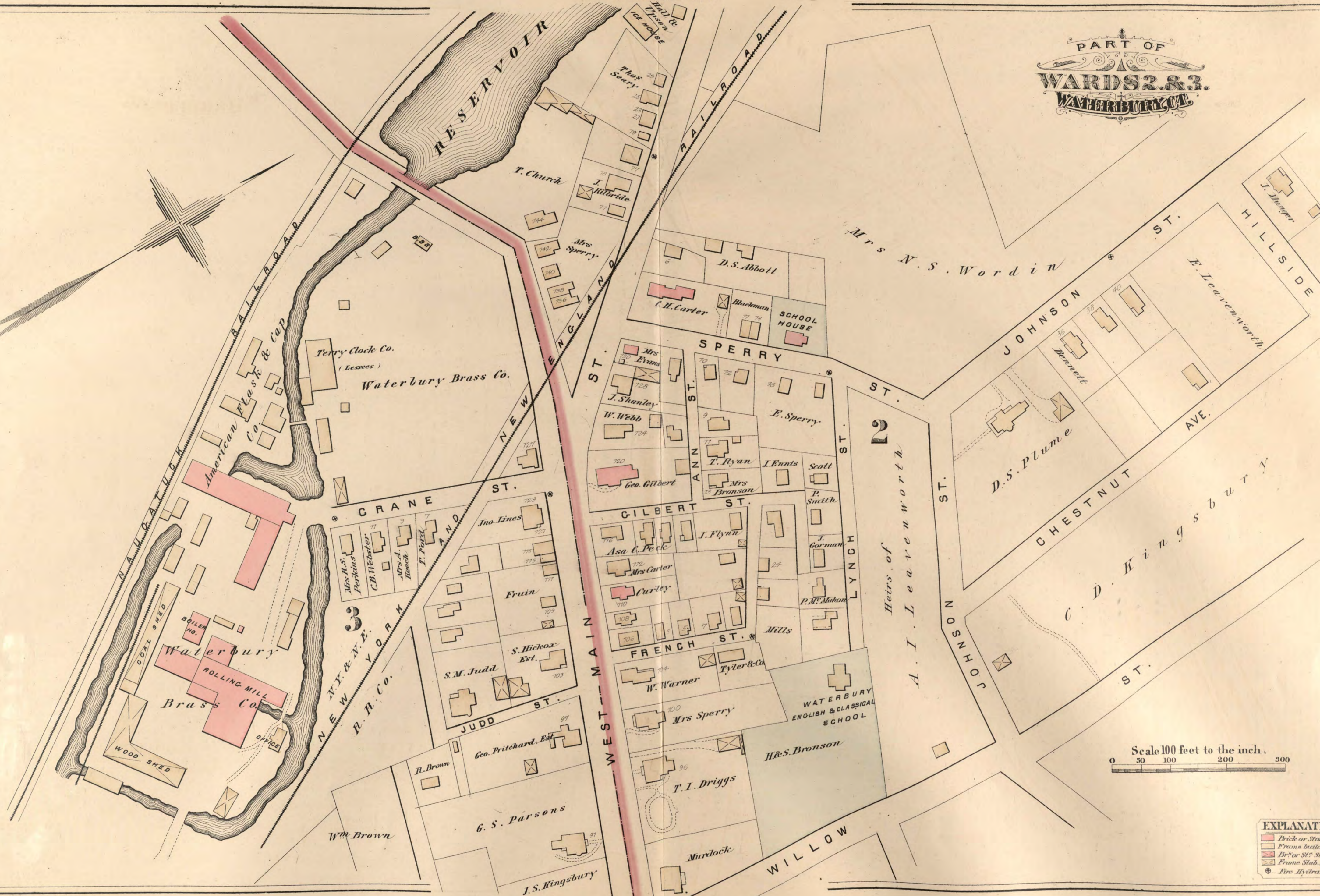
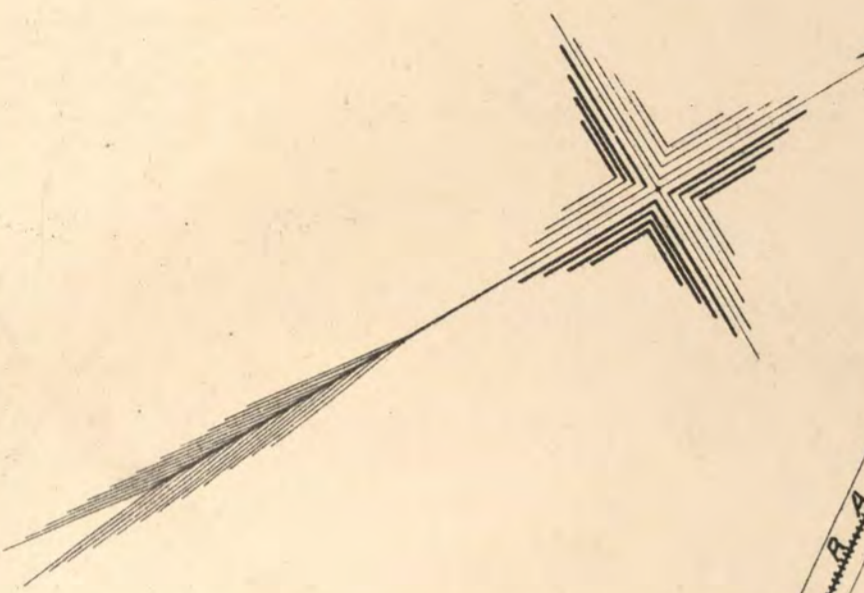
Scale 800 feet to the Inch.



Scale of feet to 1/2 of a Mile.



PART OF
WARDS 2 & 3.
WATERBURY, VT.



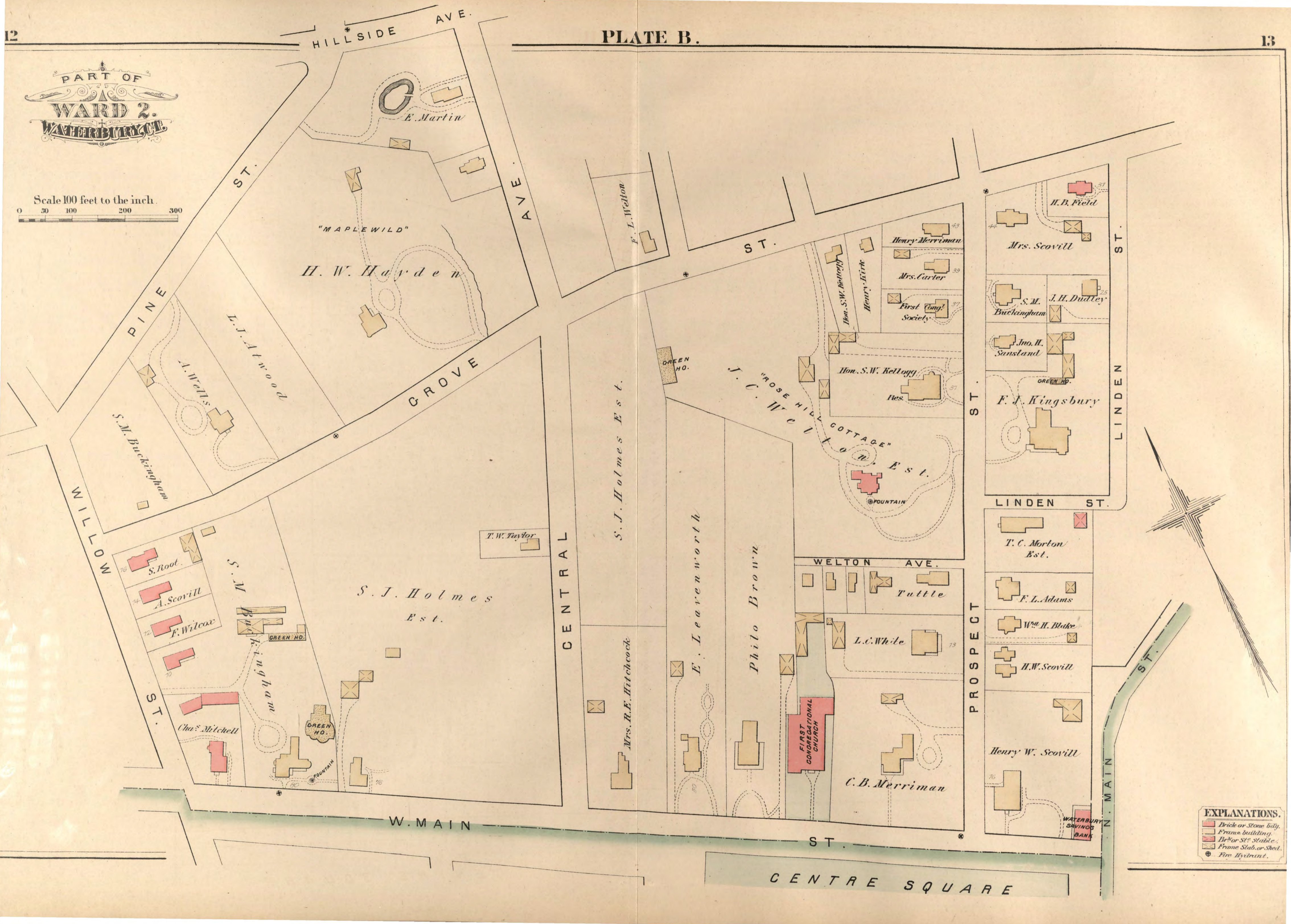
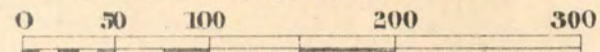
Scale 100 feet to the inch.
0 50 100 200 300

EXPLANATIONS.

	Brick or Stone bldg.
	Frame building.
	Brick or St. Stable.
	Frame Stable or Shed.
	Fire Hydrant.



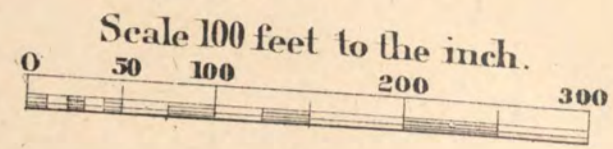
Scale 100 feet to the inch.



EXPLANATIONS.

	Brick or Stone bldg.
	Frame building.
	Br* or St* Stable.
	Frame Slab or Shed.
	Fire Hydrant.

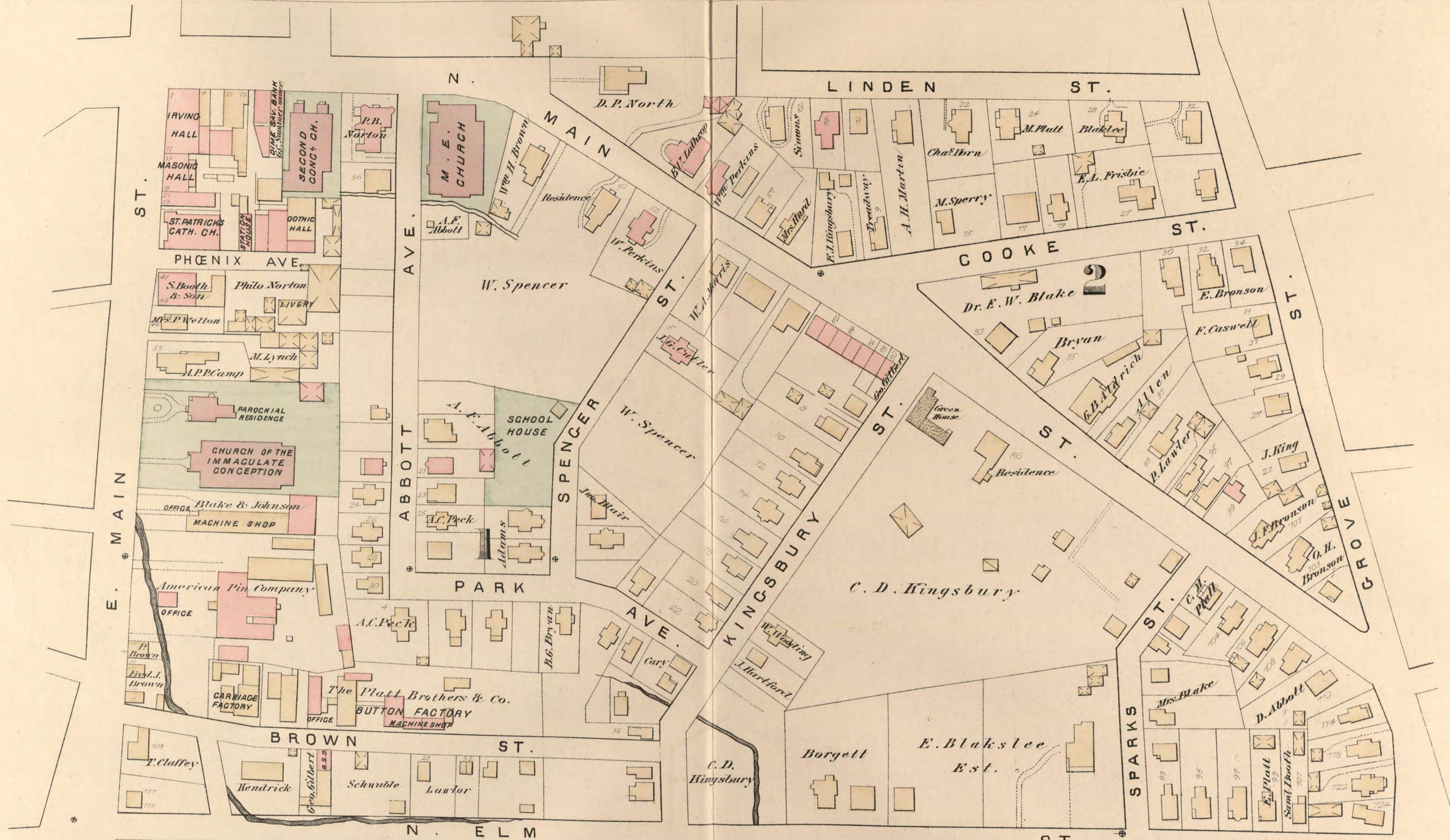
PART OF
WARDS 3 & 4
WATERBURY, CT.



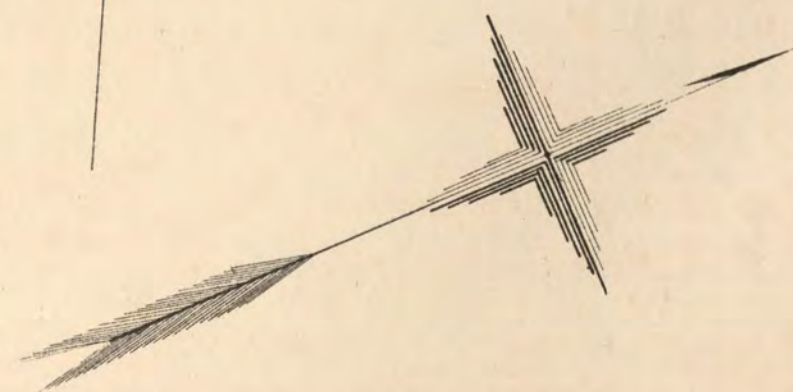
EXPLANATIONS.

- Brick or Stone City.
- Frame building.
- Brick or St. Stable.
- Frame Stable or Shed.
- Fire Hydrant.





EXPLANATIONS.
 Brick or Stone Bldg.
 Frame building.
 Bldg. for S.P. Stable.
 Frame Slab. or Shed.
 Fire Hydrant.



PART OF
WARD 1 & 2.
WATERBURY.
 Scale 100 feet to the inch
 0 50 100 200 300

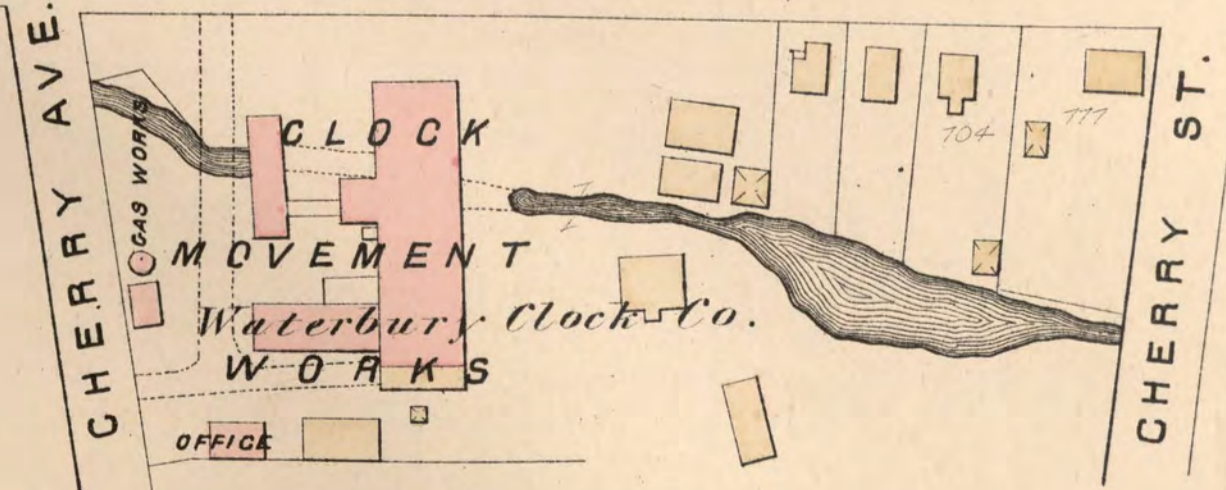
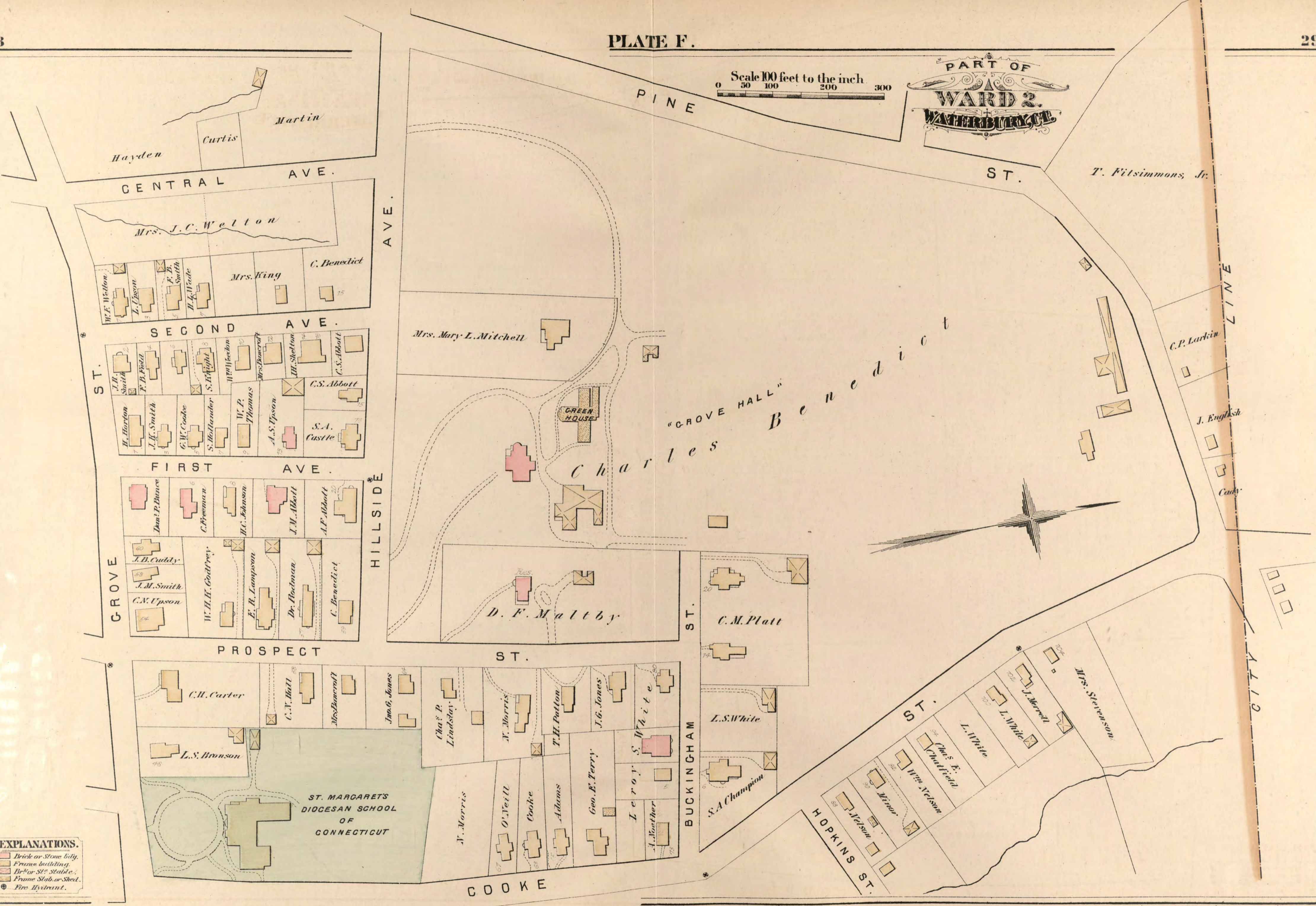


PLATE F.

Scale 100 feet to the inch
0 50 100 200 300

PART OF
WARD 2.
WATERBURY



EXPLANATIONS.

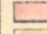


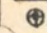
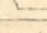
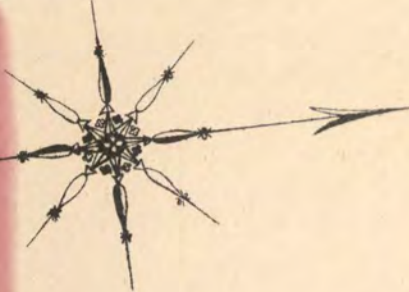
-  Brick or Stone bldg.
-  Frame building.
-  Dr. or St. Stable.
-  Frame Shed or Shed.
-  Fire Hydrant.

PLATE G.

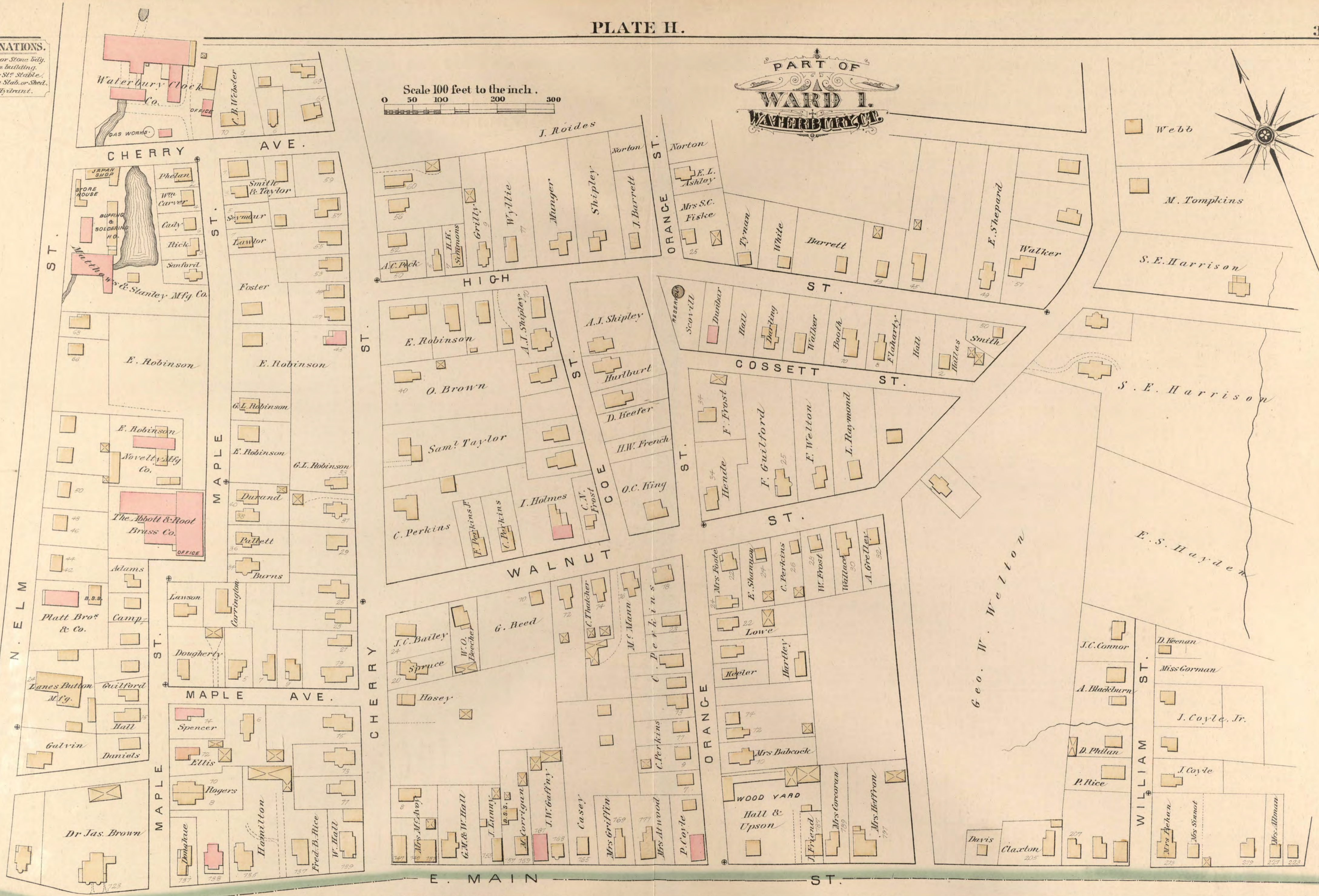
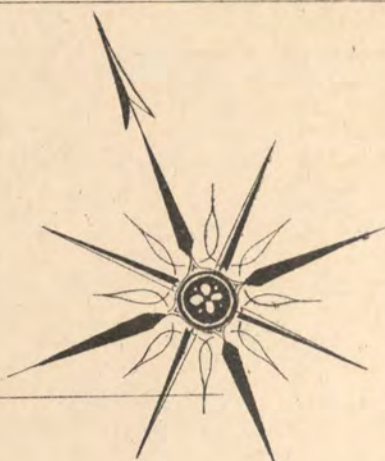


PART OF
WARD 2.
WATERBURY, CT.
Scale 100 feet to the inch.
0 50 100 200 300

EXPLANATIONS.
Brick or Stone bldg.
Frame building.
Br for St. Stable.
Frame Shed or Shed.
Fire Hydrant.

EXPLANATIONS.
 Brick or Stone bldg.
 Frame building.
 Dr. or St. Stable.
 Frame Stab. or Shed.
 Fire Hydrant.

Scale 100 feet to the inch.
 0 50 100 200 300



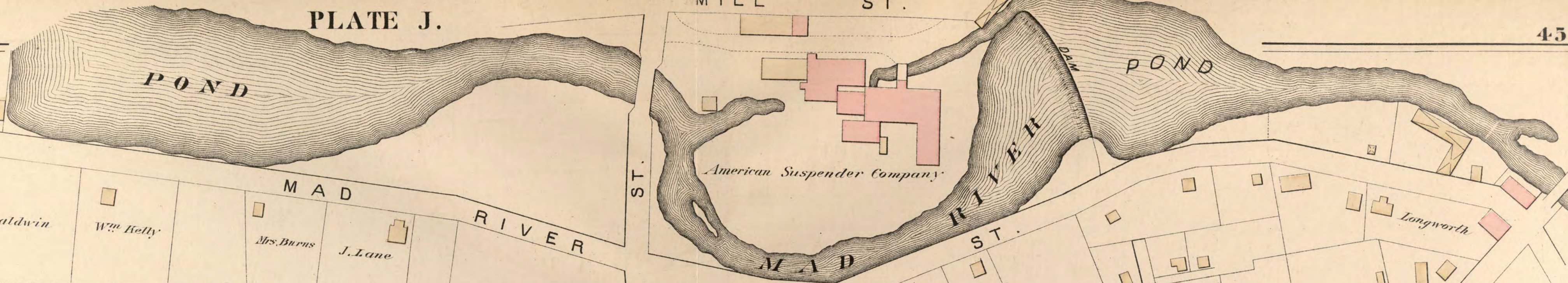


PART OF
WARD 4.
WATERBURY.

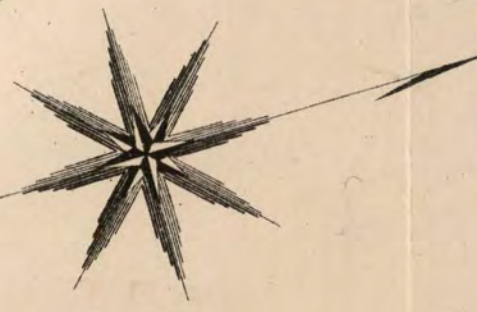
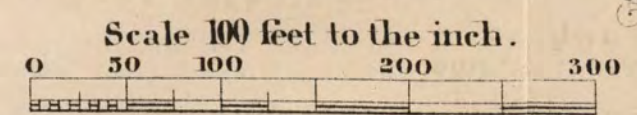
EXPLANATIONS.
 Brick or Stone bldg.
 Frame building.
 Br^{or} St^{or} Stable.
 Frame Slab or Shed.
 Fire Hydrant.

Scale 100 feet to the inch.
 0 50 100 200 300

PLATE J.



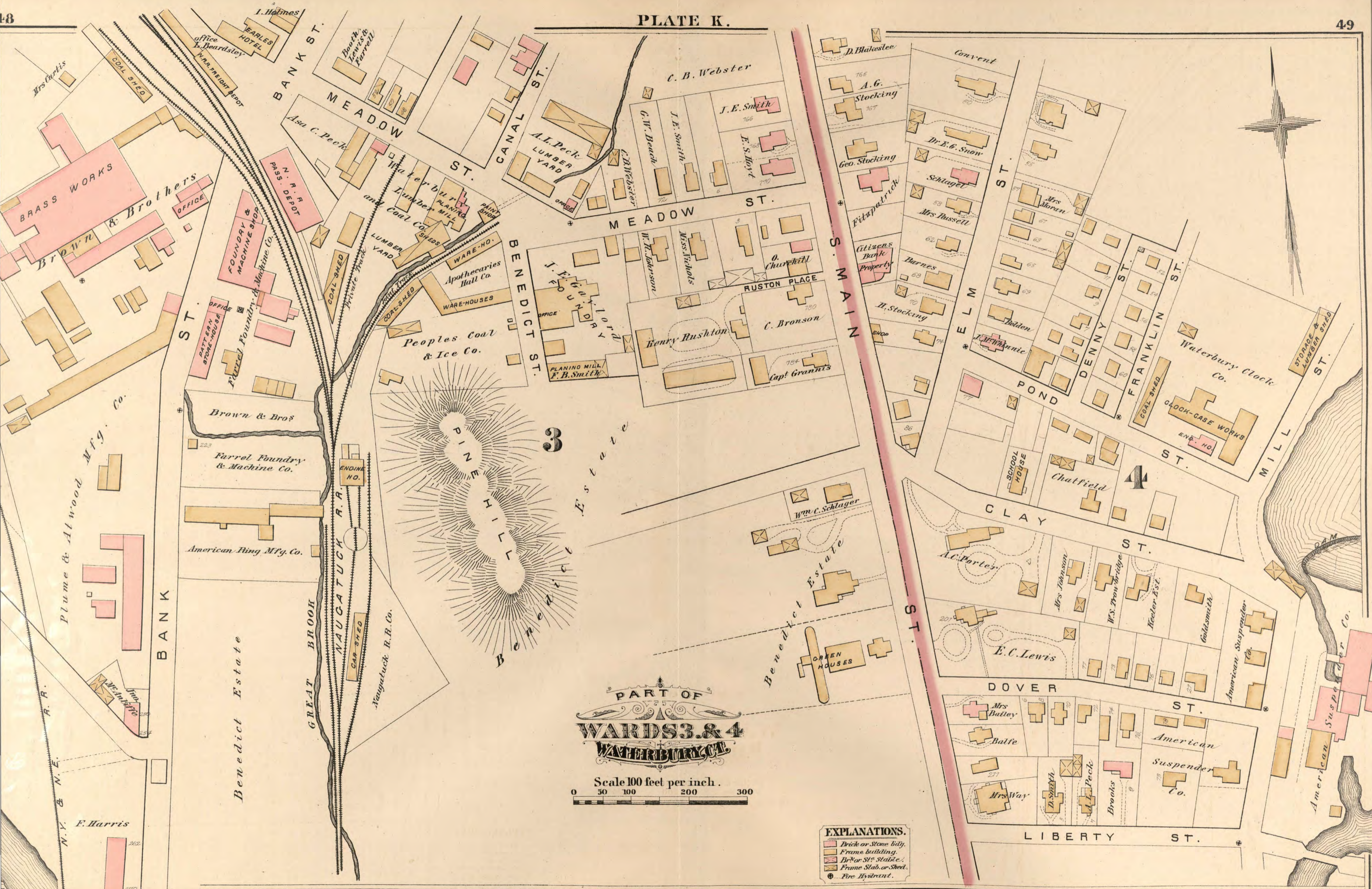
EXPLANATIONS.
 Brick or Stone bldg.
 Frame building.
 Br^r or St^e Stable.
 Frame Shed, or Shed.
 Fire Hydrant.



PART OF
WARD 4.
WATERBURY, CT.

F.J. Kingsbury

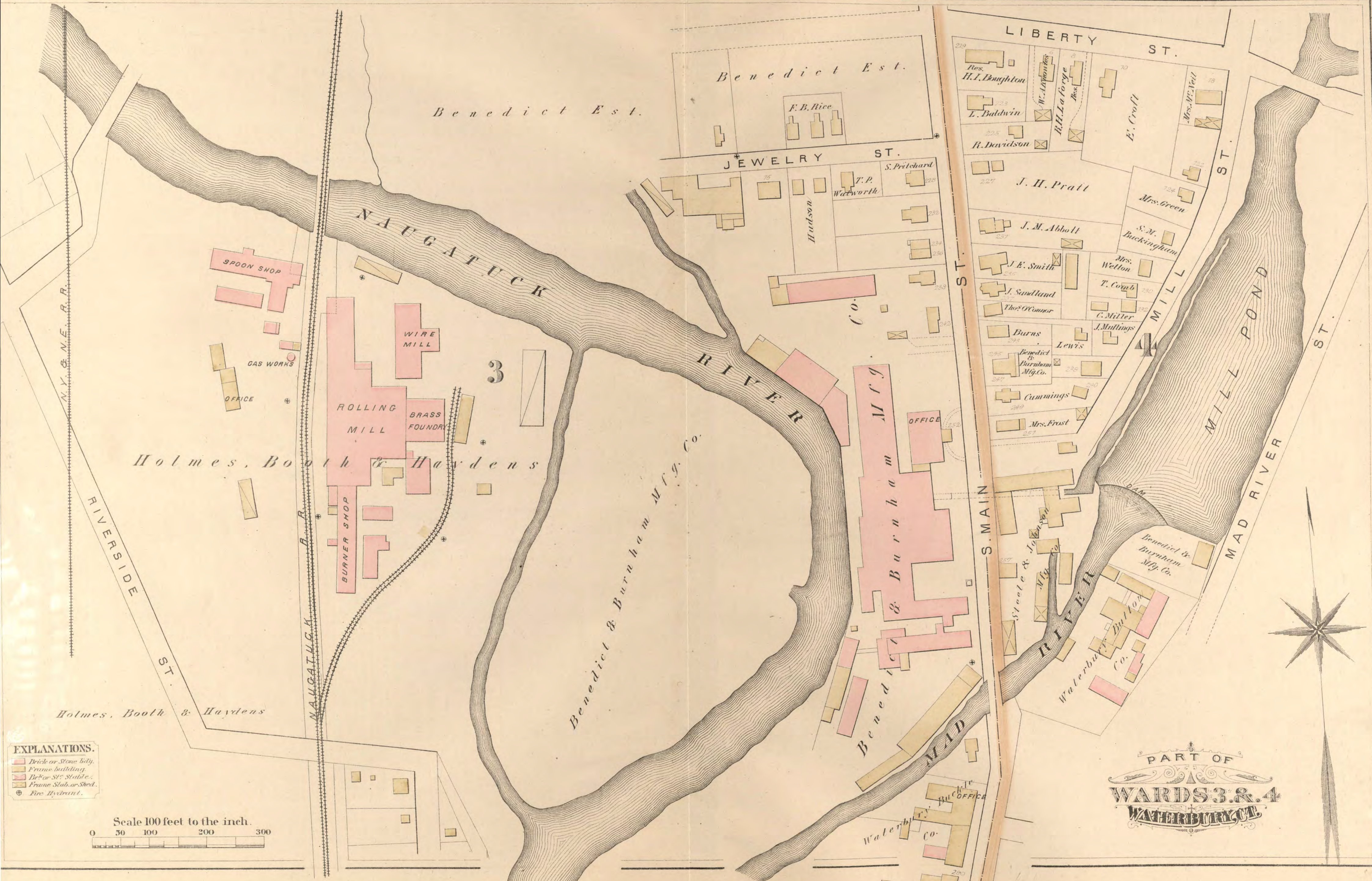
PLATE K.



PART OF
WARDS 3 & 4
WATERBURY

Scale 100 feet per inch.
 0 50 100 200 300

- EXPLANATIONS.**
- Brick or Stone bldg.
 - Frame building.
 - Brick or St. Stable.
 - Frame Stab. or Shed.
 - ⊕ Fire Hydrant.



EXPLANATIONS.
 Brick or Stone bldg.
 Frame building.
 Dr. or St. Stable.
 Frame Shed or Shed.
 Fire Hydrant.

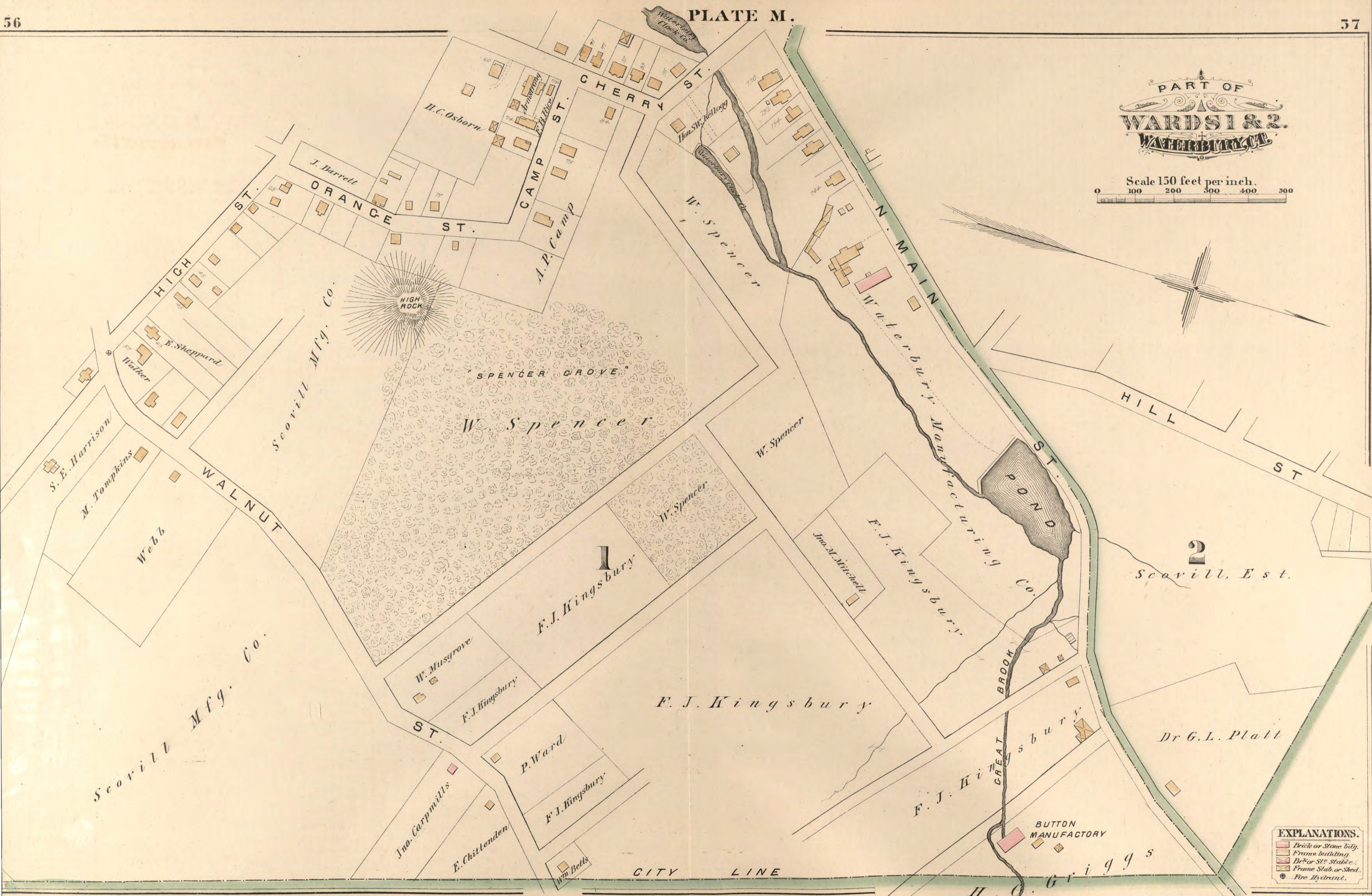
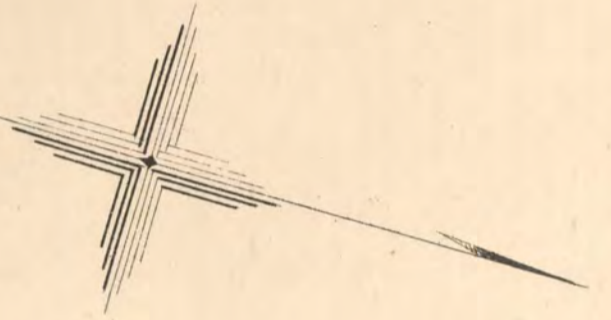
Scale 100 feet to the inch.
 0 50 100 200 300

PART OF
WARDS 3 & 4
WATERBURY, VT.

PLATE M.



Scale 150 feet per inch.
0 100 200 300 400 500

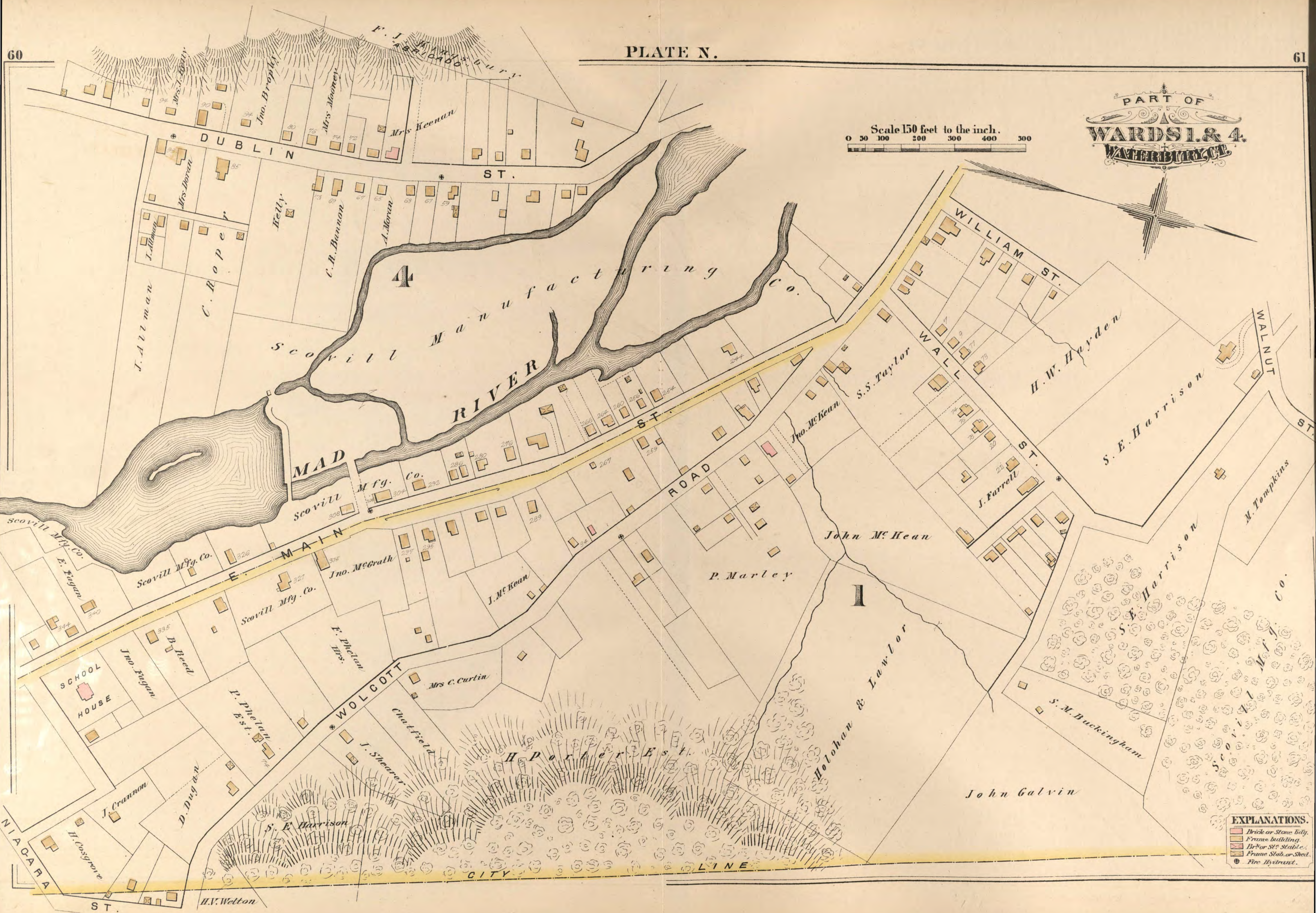


EXPLANATIONS.

	Brick or Stone bldg.
	Frame building
	Brick St. Stable
	Frame Slab or Shed.
	Fire Hydrant.

PART OF
WARDS 1 & 4
WATERBURY, CT.

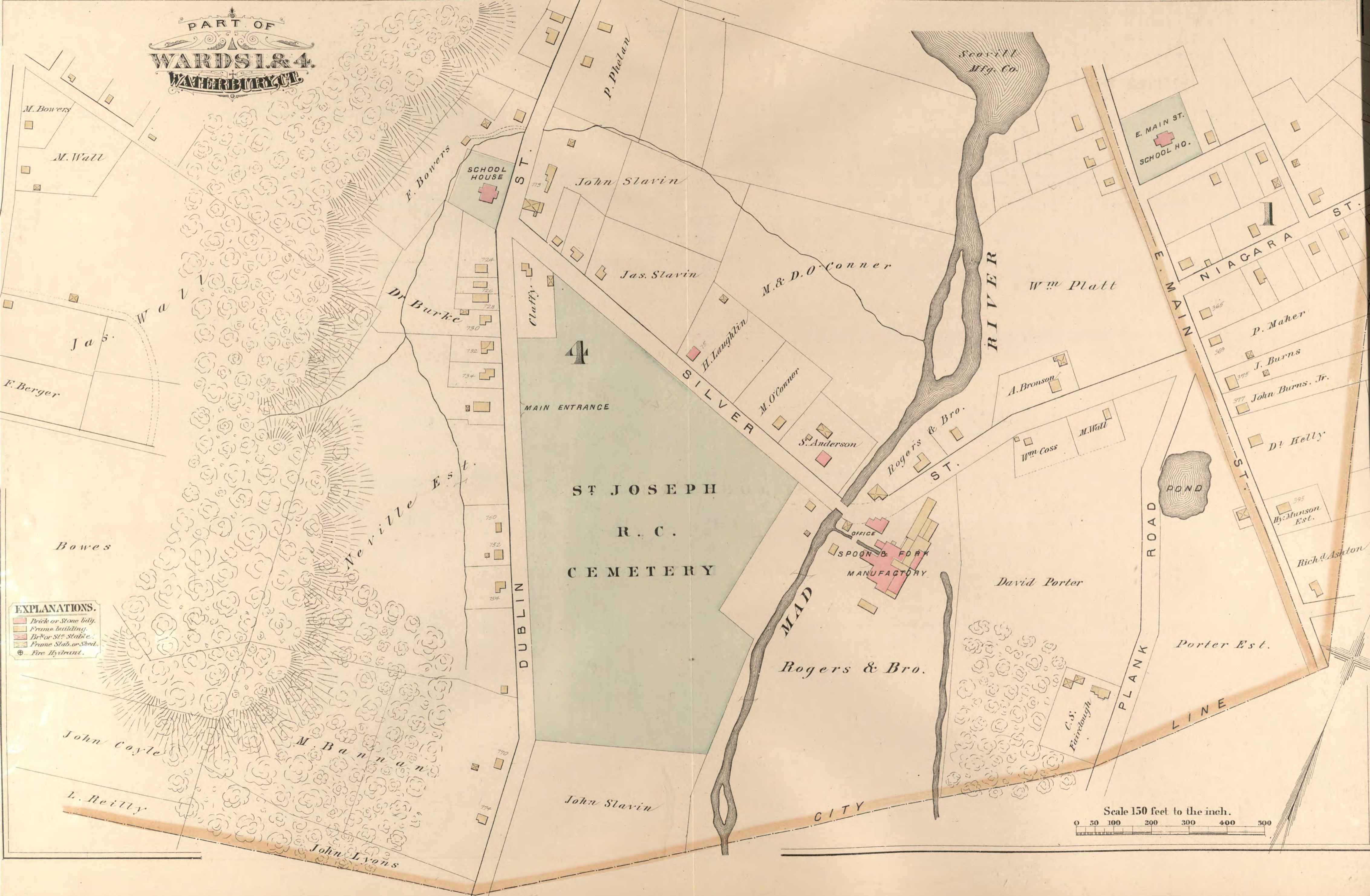
Scale 150 feet to the inch.
0 50 100 200 300 400 500



EXPLANATIONS.

	Brick or Stone bldg.
	Frame building.
	Br or St. stable.
	Frame Shed or Shed.
	Fire Hydrant.

PART OF
WARD 1 & 4
WATERBURY CT.



M. Bowers
M. Wall

Jas.
F. Berger

Bowes

EXPLANATIONS.
Brick or Stone bldg.
Frame building.
Br for Ste. Stable e.
Frame Slab, or Shed.
Fire Hydrant.

John Coyle
L. Reilly

M. Bannan

John Lyons

SCHOOL HOUSE

ST. ST.

Claffy

MAIN ENTRANCE

DUBLIN

4

ST JOSEPH
R. C.
CEMETERY

P. Phelan

John Slavin

Jas. Slavin

M. & D. O'Conner

SILVER

H. Laughlin
M. O'Conner

S. Anderson

Rogers & Bro.
ST.

Rogers & Bro.

CITY

Scovill
Mfg. Co.

RIVER

Wm Platt

E. MAIN ST.
SCHOOL HO.

E. MAIN

NIAGARA

P. Maher

J. Burns

John Burns, Jr.

D. Helly

Th. Munson Est.

Rich. Ashton

Porter Est.

C. S. Farrow

ROAD

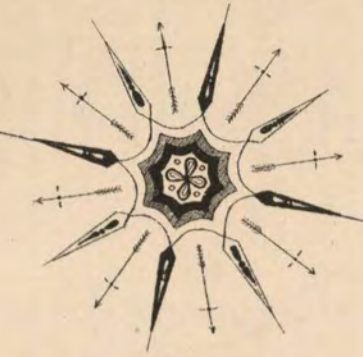
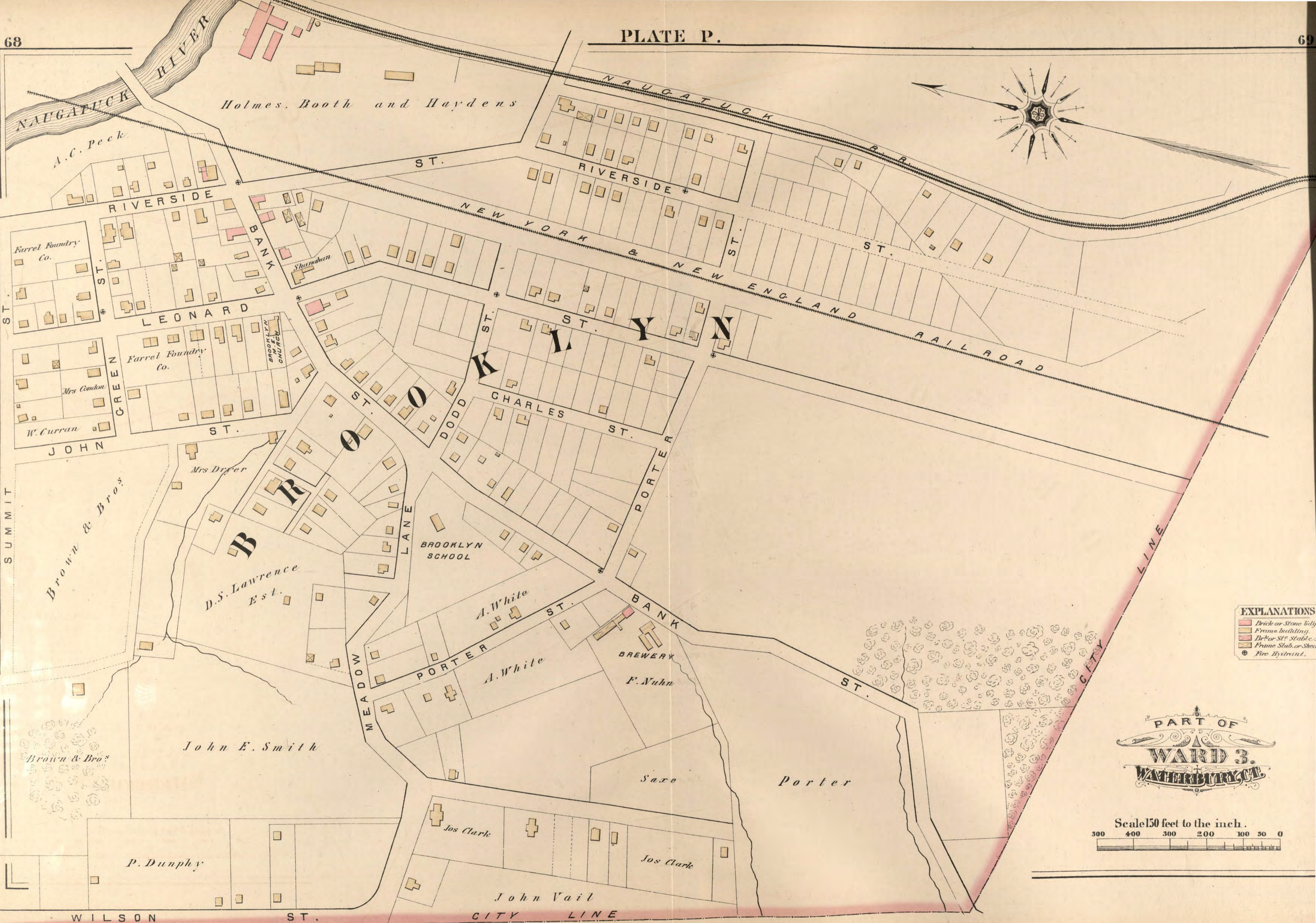
PLANK
LINE

POND

David Porter

Scale 150 feet to the inch.
0 50 100 200 300 400 500

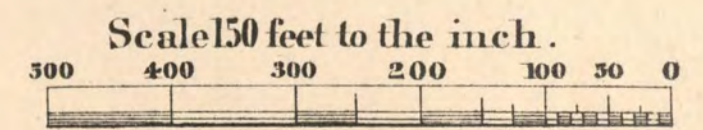
PLATE P.



EXPLANATIONS

- Brick or Stone bldg.
- Frame building.
- Dr. or St. Stable.
- Frame Slab or Shed.
- ⊕ Fire Hydrant.

PART OF
WARD 3.
WATERBURY, CT.



WILSON ST.

JOHN VAIL CITY LINE

PLATE Q.

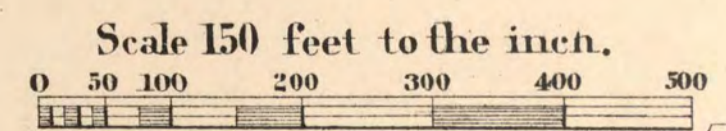
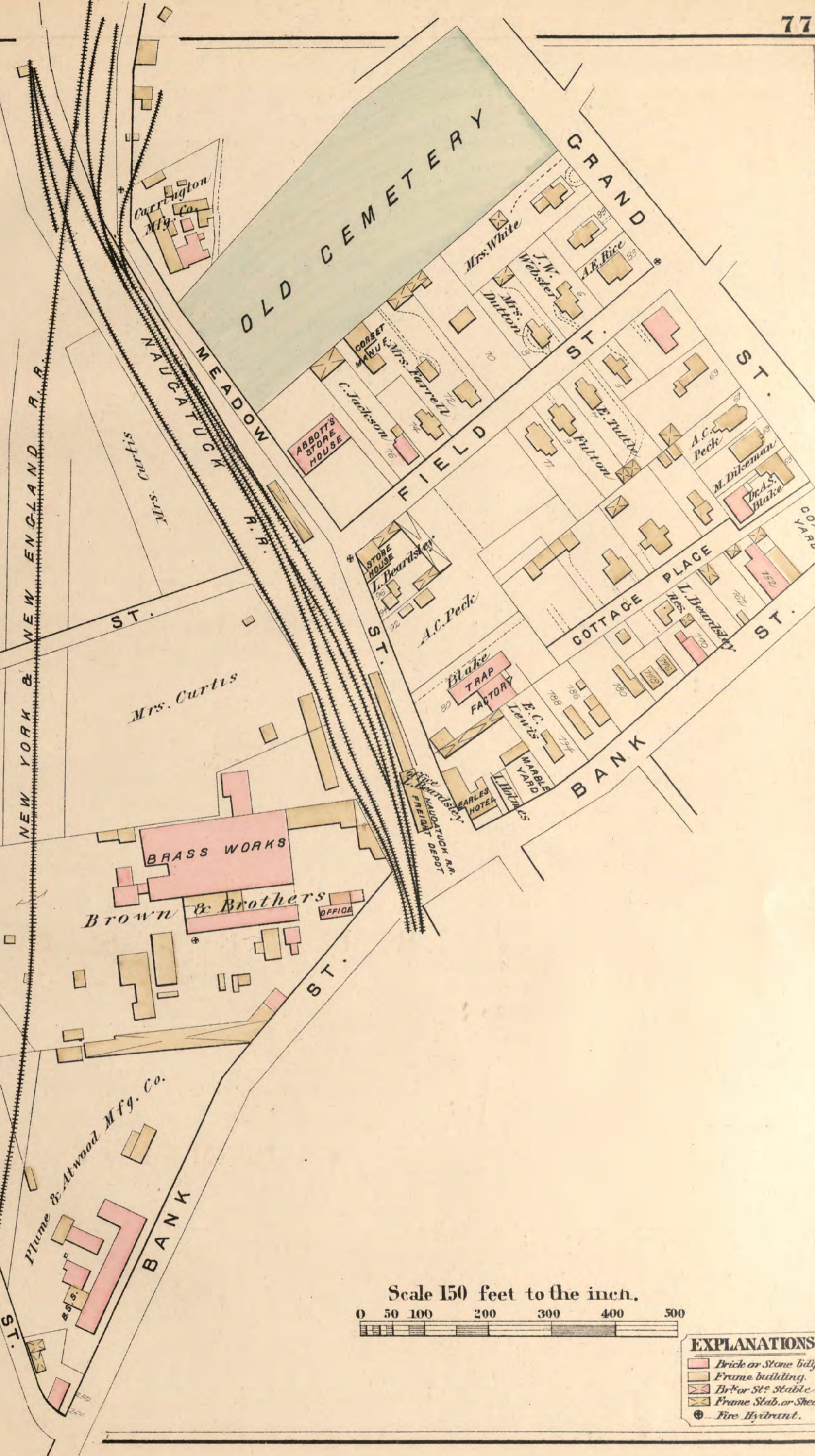


PART OF
WARD 3.
WATERBURY

WILSON ST.
C h i p m a n



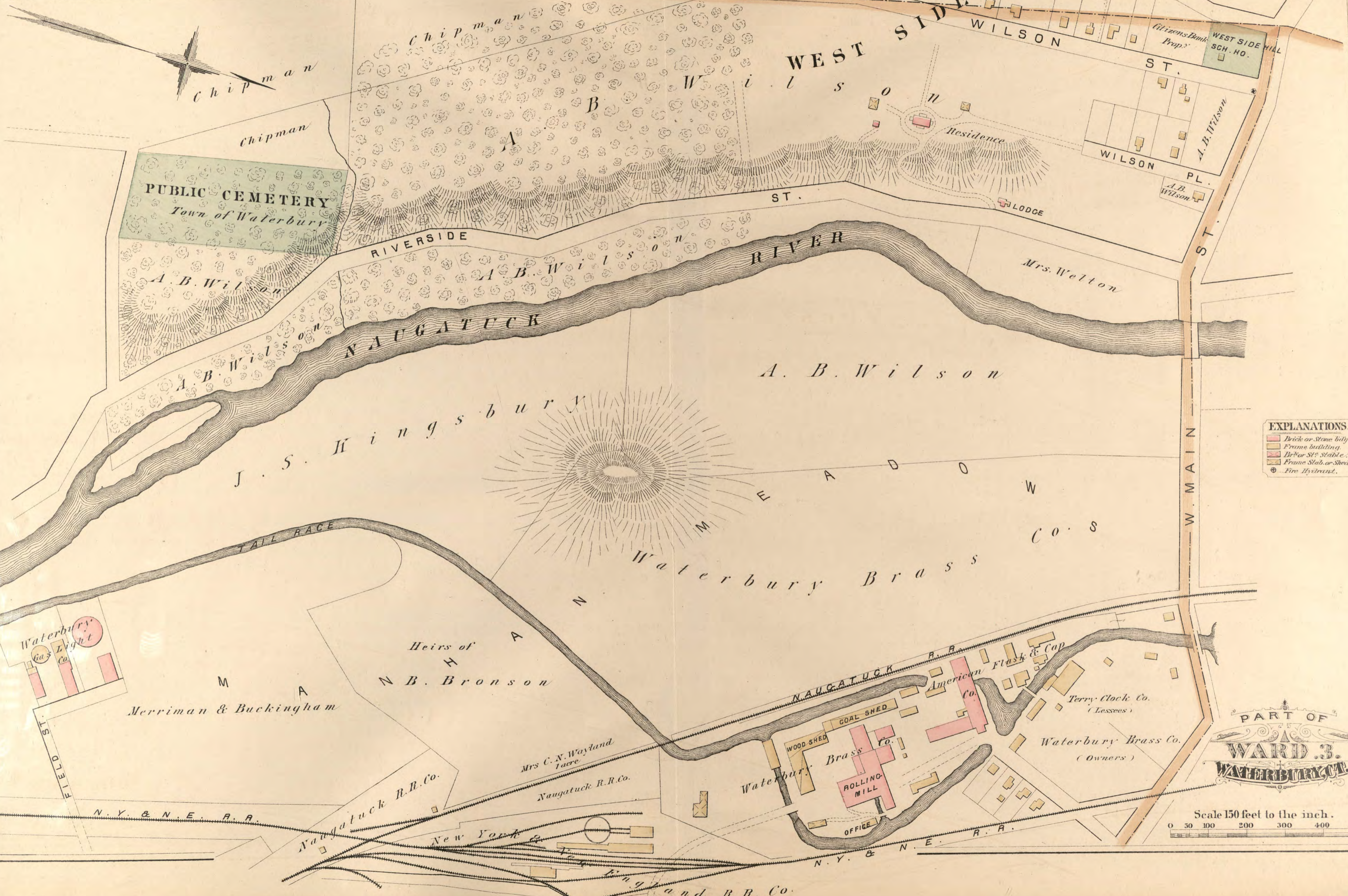
Mrs. Curtis



Scale 150 feet to the inch.

EXPLANATIONS.

	Brick or Stone bldg.
	Frame building.
	Br or St? Stable.
	Frame Slab or Shed.
	Fire Hydrant.

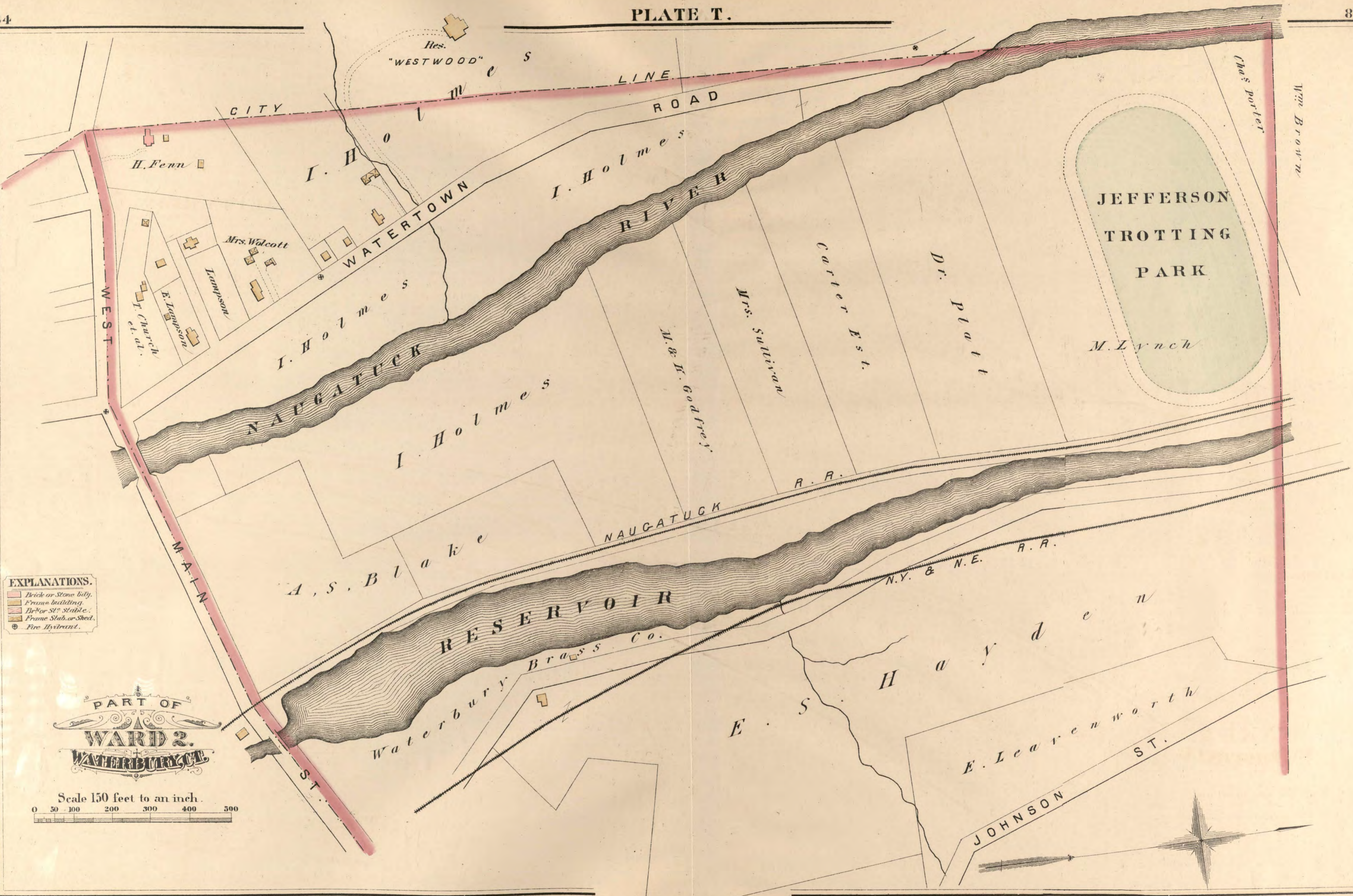


EXPLANATIONS.

	Brick or Stone bldg.
	Frame building.
	Br&or St. Stable.
	Frame Shed or Shed.
	Fire Hydrant.



Scale 150 feet to the inch.
0 50 100 200 300 400 500



EXPLANATIONS.
 Brick or Stone bldg.
 Frame building.
 Frame St. Stable.
 Frame Shed or Shed.
 Fire Hydrant.

PART OF
WARD 2.
WATERBURY, VT.

Scale 150 feet to an inch.
 0 50 100 200 300 400 500



PART OF
WARD 2.
WATERBURY, VT.

EXPLANATIONS.
 Brick or Stone bldg.
 Frame building.
 Br for St. Stable.
 Frame Stab. or Shed.
 Fire Hydrant.

Scale 150 feet to one inch
 0 100 300 500



CITY ATLAS
OF
WATERBURY,

CONNECTICUT
G. M. HOPKINS