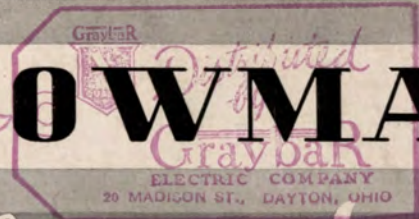


Electric

MANNING - BOWMAN



Appliances

INDEX

Article	Page
Bottle Warmer	31
Buffet Servers	30
Chafing Dishes	32
Coffee Services	8-11
Cookers	27-28
Cooker Service	29
Cord Sets	40
Egg Cooker	31
Egg Cooker Set	30
Flatirons (automatic)	33-35
Flatirons (non-automatic)	35-36
Glass Coffee Makers	2- 3
Glass Coffee Maker Services	4- 5
Heating Pads	37-39
Matched Patterns	6- 7
Percolators	12-14
Percolator Set	11
Terms	41
Toasters (automatic)	15
Toasters (non-automatic)	18-19
Toaster Services	16-17
Urns	8-11
Waffle Irons (automatic)	24-25
Waffle Irons (non-automatic)	25-28
Waffle Service	23
Waffle Irons (twin-type)	20-22

Stylized Designs Recognized Quality

1. **STYLIZED DESIGNS:** Every Manning-Bowman Electric Appliance is styled for today's market. More than ever before, present day consumers are style conscious—to a point where successful retail sales and consumer satisfaction are dependent on *smart style* as well as quality.

Manning-Bowman Appliances are style leaders in every sense of the word. Pioneers in the application of beautiful chromium finish to electric appliances, originators of Matched Patterns of Appliances, forerunners in the use of solid walnut and luminous crystal Arinite trimmings—these are only a few of many accomplishments that emphasize the **STYLE LEADERSHIP** of Manning-Bowman Electric Appliances.

2. **RECOGNIZED QUALITY:** Since 1864 Manning-Bowman has manufactured quality metal products. No more worthy praise could be bestowed on Manning-Bowman than the well-known phrase—"Craftsmen in Metal Since 1864."

Manning-Bowman was among the first to manufacture and market electric appliances, and, in fact, **MANNING-BOWMAN** developed many of the electric appliances that are now household by-words.

This position of leadership in the manufacture of electric appliances has been maintained. Up-to-date equipment and modern manufacturing methods insure finest quality at the lowest possible cost that efficient present-day manufacturing facilities can produce.

It goes without saying that all appliances made by Manning, Bowman & Co., on which Underwriters' Laboratories issue approval, have been officially tested and approved by this nationally recognized testing authority.

CATALOG No. C 737

MANNING, BOWMAN & CO.
Meriden, Conn.

New York
200 Fifth Ave.

Chicago
Merchandise Mart

San Francisco
150 Post St.





The HARMONY

Style and coffee making efficiency are superbly combined in the Harmony. The water rises into the upper bowl at near-boiling point—the recognized correct temperature for making finer coffee.

Available in seven and nine-cup sizes, based on standard six-ounce measuring cups. Both heat-resisting glass bowls have a hand-decorated line motif and on the lower bowl cup capacities are neatly indicated right in the design. A sanitary white porcelain filter and durable fast cooling electric stove are other superior features. Lustrous chromium finished metal parts with smart contrasting black trimmings.

Cord equipped with an "on-off" switch.

837, 7 Cups—42 oz. capacity Code "Vedette"

839, 9 Cups—54 oz. capacity Code "Vendace"

Watts 550 Shipping Weight 5 lbs.

Standard Package 3

The CRUSADER

Non-electric model. Available in seven or nine-cup sizes. Equipped with sanitary white porcelain filter. Black bakelite handle.

17, 7 Cups—42 oz. capacity
Code "Quaff"

19, 9 Cups—54 oz. capacity
Code "Quartan"

Shipping Weight 3 lbs.

Standard Package 6



The PIONEER

The Pioneer's gracefully shaped heat resisting glass bowls and chromium finish with solid walnut trimmings make it most attractive. Coffee is brewed with the water at the correct coffee-making temperature and its cups are full size, based on six-ounce measuring cups. Cup capacities are indicated on the lower container. The electric stove with its bottom draft ventilation makes for faster cooling—an important factor. Filter of sanitary white porcelain held in position by a corrosion-proof monel metal spring. "On-off" switch on cord.

827, 7 Cups—42 oz. capacity Code "Thyme"

829, 9 Cups—54 oz. capacity Code "Tibia"

Watts 550 Shipping Weight 5 lbs.

Standard Package 3

The COURTIER

Distinctive non-electric model. Sanitary white porcelain filter. Chromium cover. Black bakelite handle. Seven or nine-cup sizes.

37, 7 Cups—42 oz. capacity
Code "Quoit"

39, 9 Cups—54 oz. capacity
Code "Quod"

Shipping Weight 3 lbs.

Standard Package 3





PURITAN COFFEE MAKER

Better coffee—the one thing that every household desires—is assured with this Manning-Bowman glass coffee maker. The water electrically heated in the lower container rises into the top bowl at the near-boiling point (never actually boiling though) which is the correct temperature for extracting the full flavor from the coffee.

Manning-Bowman glass coffee makers are of full seven and nine-cup capacities, based on standard six-ounce measuring cups. Both the upper and lower bowls are of finest heat-resisting glass. Wide necks make cleaning of these bowls an easy matter and the lower one has a dripless pouring lip. An efficient sanitary white porcelain filter with a convenient lifting handle is held in place by a corrosion-proof monel metal spring.

The bottom draft, fast cooling electric stove has a helically wound highest heat resistant nichrome type element. The electric stove case is beautifully finished in non-tarnishing chromium with brown bakelite handles that match the pouring handle on lower glass bowl. After the coffee has been made, the chromium cover may be inverted and used as a holder for the inverted upper container. Or this same cover may also be fitted over the lower bowl containing the ready to serve coffee.

817	7 Cups (42-ounce capacity) Code "Verb"	Height 13½ inches
819	9 Cups (54-ounce capacity) Code "Vesper"	Height 13¾ inches

Watts 550

Shipping Weight 5 lbs.
Standard Package 6



Upper container removed and placed on inverted chromium cover.



Coffee ready to serve. Chromium cover is in place to conserve heat.



Bottom draft ventilated, fast cooling electric stove.



PIONEER COFFEE SERVICE

Here is a coffee service that meets with an enthusiastic welcome in any home and—as a gift to the bride it is ideal—especially when thoughtful friends combine to complete her electric appliances, all in the distinctive Pioneer Pattern.

The complete service consists of the nine-cup capacity Pioneer glass coffee maker; metal sugar and cream set and an 18-inch metal tray with solid walnut trimmings to match the trimmings of the coffee maker.

All metal parts of the service, including the heating unit and cover of the glass coffee maker, are finished in lustrous non-tarnishing chromium. The shapely bowls of the coffee maker are of finest heat-resisting glass with cup capacities indicated on the lower bowl.

The coffee maker produces the very best coffee possible, bringing the water in contact with the ground coffee at the correct coffee-making temperature—the near-boiling point. Full nine-cup capacity based on standard six-ounce measuring cups. The sanitary white porcelain filter assembly can be quickly and thoroughly cleaned. The bottom draft, fast cooling electric stove has a helically wound highest resistant nichrome type element. The cord has an "on-off" switch. Height of coffee maker $13\frac{3}{4}$ inches.

8290 Service
Code "Vertu"

Pioneer Glass Coffee Maker, 9 Cups (54-ounce capacity)	829	Watts	550
Sugar and Creamer	146	Shipping Weight	10 lbs.
Tray, 18-inch	5218	Standard Package	2

HARMONY COFFEE SERVICE

The hospitably-minded home could wish for nothing more complete than the Harmony coffee service—a 42-ounce capacity Harmony glass coffee maker; eight highest quality crystal demi-tasse cups and saucers; a crystal sugar and creamer; two crystal cigarette holders and four crystal ash trays, all set forth on a large 16 x 24-inch chromium trimmed micarda tray, with solid crystal handles.

Such a service is a subtle compliment to one's guests, especially since a Manning-Bowman glass coffee maker brews a far better coffee than can be made in any other way, because it absolutely insures the correct water temperature for extracting all the finest ingredients from the ground coffee. And "42-ounce capacity" means three demi-tasse servings for eight guests.

The hand-decorated line motif on the two glass bowls include cup capacity markings on the lower bowl. Coffee maker equipped with sanitary white porcelain filter, fast cooling heating unit, and "on-off" switch on cord.

And having gone so far, many a home will wish to add other matching electric appliances in the classic Harmony pattern.

8370 Harmony Coffee Service

Code "Ingot"

Watts 550

Shipping Weight 15 lbs.

Standard Package 1



*Three Distinctive Patterns
of
Matched Appliances*



The PURITAN PATTERN

Manning-Bowman Matched Appliances combine the smartness of stylized designs with the convenience of efficient electric cooking and serving. The distinctive Puritan Pattern includes: Glass Coffee Maker, Coffee Service, Waffle Irons (both automatic and non-automatic), Toaster and Percolator.



PIONEER PATTERN

The Pioneer Pattern, in gleaming chromium and solid walnut trimmings includes the following popular electric table appliances: Glass Coffee Maker, Coffee Services, Chafing Dish, Toaster, Toaster Service, Egg Cooker, Breakfast Service, Waffle Irons (both automatic and non-automatic), Waffle Service, Cooker, Cooker Service and a series of Percolators of four, six and nine-cup capacities.



HARMONY PATTERN

The classic Harmony Pattern of Matched Appliances remains a favorite. It includes Glass Coffee Maker, Coffee Services, automatic and non-automatic Toasters, Toaster Services, Waffle Irons (automatic and non-automatic), Cooker, Chafing Dish, Buffet Server and a series of Percolators of four, six and nine-cup capacities.

The PIONEER

The unusual charm of the Pioneer Pattern solid walnut trimmings and lustrous chromium plate is strikingly emphasized in this smart coffee service. Straight lines subtly relieved by narrow circular bands is the Pioneer design which has been so enthusiastically approved by the most fastidious. Nine cups is the capacity of the urn. Both sugar and creamer are chromium lined—the sugar has two metal handles and a cover surmounted with a walnut knob while the creamer has a neat dripless pouring spout and one metal handle. The tray, too, has full width walnut handles.

Seamless copper urn; protective fuse-link device; dripless type faucet; nichrome wound mica heating element. Urn is 12 $\frac{3}{4}$ inches high while the tray is 19 $\frac{1}{4}$ inches long and 7 $\frac{3}{4}$ inches wide.

4830/9 Service

Patented

Code "Neb"

Urn (capacity 9 cups)	483/9
Sugar and Creamer	146
Tray	4819
Watts 350	Shipping Weight 15 lbs.

Standard Package 2

The WINDSOR

This stately coffee service adds a note of distinction in any home as well as a promise of a finer cup of coffee. Finished in gleaming non-tarnishing chromium, with luminous crystal trimmings, including crystal feet on the urn as well as crystal handles and knob. The handles on the 21 x 9 $\frac{3}{4}$ -inch oblong tray and the knob on the top of the sugar is likewise crystal while the handles on the sugar and creamer are of metal. Both sugar and creamer are gold lined.

The circular lined decorative motif adds to the beauty of the set.

The urn is of nine-cup capacity; equipped with a durable nichrome wound heating unit, with a protective fuse device that prevents overheating; all inside parts of commercially pure aluminum; easy to clean chromium lining; body of heavy gauge seamless copper, non-drip faucet. Manning-Bowman is proud of this coffee set.

4910/9 Service

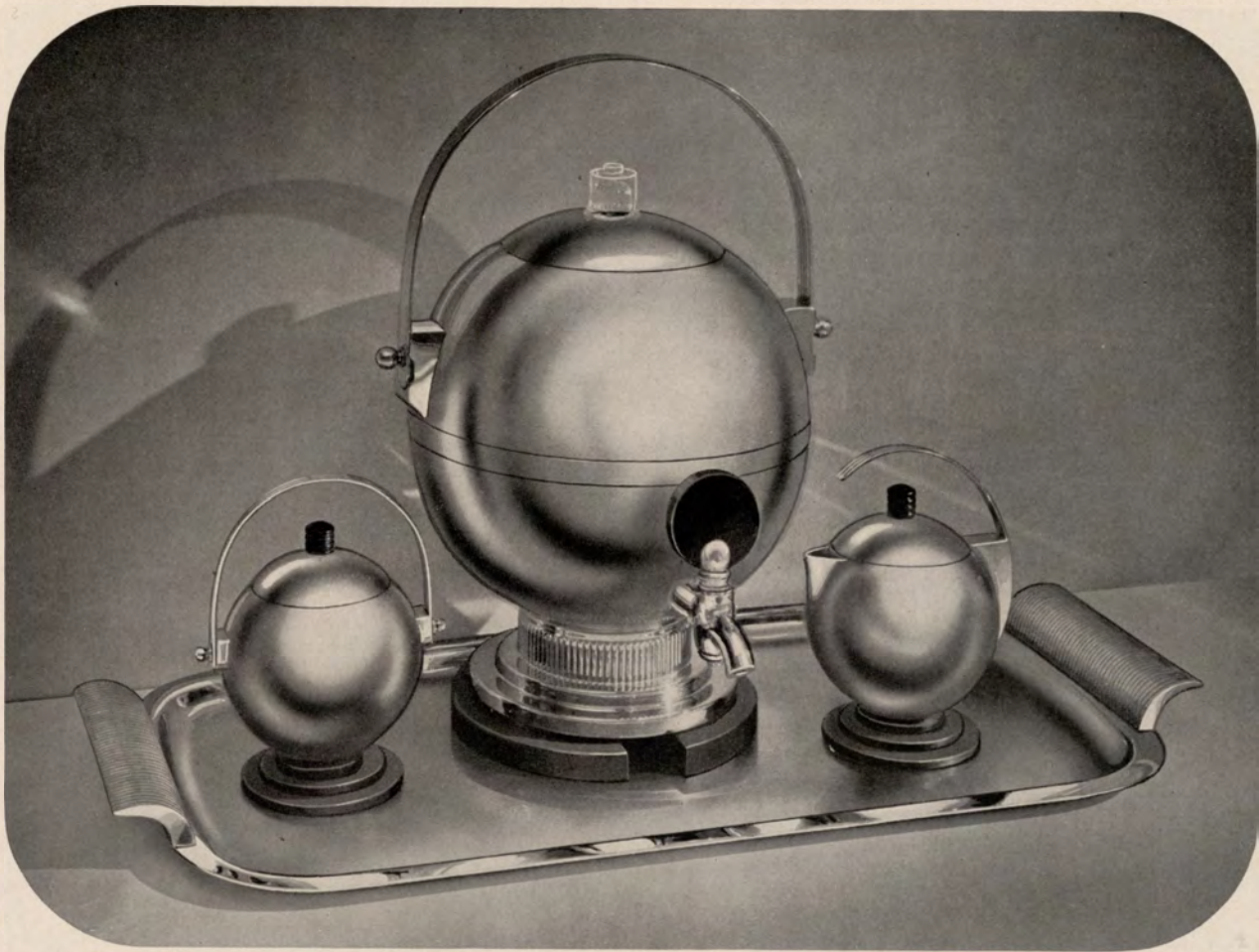
Patented

Code "Pastor"

Urn (capacity 9 cups)	491/9
Sugar and Creamer	1151
Tray	5020
Watts 350	Shipping Weight 13 lbs.

Standard Package 2





The HARMONY

The spherical design of the "Harmony" sets it apart as the smartest coffee service. And—in addition to percolating finer coffee it may also be used as a coffee server simply by removing the inside parts. The urn will percolate twelve cups of coffee, or when used as a server, with inside parts removed, holds sixteen cups.

An automatic thermostatic control in the urn insures superbly fine coffee at all times. The body is of heavy seamless copper and is equipped with a nichrome wound mica unit. It is 13 inches high and is equipped with commercially pure aluminum inside parts and a dripless faucet. Urn and sugar and creamer are finished in lustrous chromium with bases and trimmings of either contrasting black or luminous crystal. Sugar and creamer are gold lined.

The all metal tray with convenient carrying handles is 20 inches long and 10 inches wide.

Here is a service that strikes a new note in up-to-the-minute coffee serving. In the Harmony Pattern, with black trimmings in contrast to the lustrous chromium, it is especially appealing. The new luminous crystal Arinite trimmings in which this set is also available are extremely striking. For use on A. C. (alternating current) only.

4920/12 Black

Patented
Code "Iris"

4930/12 Crystal

Patented
Code "Ketch"

Urn (capacity 12 cups)

492/12

Urn (capacity 12 cups)

493/12

Sugar and Creamer

1152

Sugar and Creamer

1153

Tray

5120

Tray

5120

Watts 350

Shipping Weight 15 lbs.

Standard Package 2



The GRENADIER

A set that glorifies the companionable act of coffee drinking. The dignified proportions of the urn are enhanced by a decorative lined band, which also appears on the collar of the sugar and creamer. The urn, which is of nine-cup capacity, is equipped with a durable nichrome wound mica heating unit, with a protective fuse device to prevent overheating. Inside parts are of commercially pure aluminum. The body is of seamless copper, with non-drip faucet. Overall height 13½ inches. The side handles of the urn are all metal, as are those of the sugar and creamer. The faucet handle of the urn and the handles of the tray are black Arinite. Sugar and creamer are gold lined. Overall measurements of the tray 19 x 12¼ inches.

4900/9 Service

Patented

Code "Parvis"

Urn (capacity 9 cups)	490/9
Sugar and Creamer	1150
Tray	5316

Watts 350 Shipping Weight 13 lbs.

Standard Package 2



The PURITAN

An urn set of outstanding value. Its modern design, circular line relief and lustrous finish, must be seen to be appreciated. The trimmings are supplied either in black ebonized wood or solid walnut. Sugar and creamer nicely complement the lines of the urn and like the urn are chromium lined. The oblong tray has generous sized carrying handles and may be used as an informal serving piece.

Urn is 12 inches high, with seamless copper body, nichrome wound mica heating unit, protective fuse device and dripless faucet. The tray is 19¾ inches long and 7¾ inches wide overall.

4850/8W Walnut

Patented

Code "Apex"

4850/8B Black

Patented

Code "Monte"

Urn (capacity 8 cups)	485/8
Sugar and Creamer	147
Tray	4919

Specify Black or Walnut Trim

Watts 350 Shipping Weight 10 lbs.

Standard Package 2

The PLYMOUTH

The gracious informality of this coffee service will appeal to every hostess. Solid walnut handles are strikingly effective with the bright non-tarnishing chromium finish and are of generous proportions to make serving a pleasure. The artistically designed spout is of the latest non-drip type.

The percolator is 11 inches high with body of seamless copper lined with durable chromium. It is equipped with a nichrome wound mica unit and protective fuse-link device that prevents overheating.

The sugar and cream make attractive serving pieces when used alone. The tray is 19 $\frac{1}{4}$ inches long by 7 $\frac{3}{4}$ inches wide and a delightful utility tray for any serving need.

3830/6 Service
Patented
Code "Addax"

Percolator (capacity 6 cups)	383/6
Sugar and Creamer	146
Tray	4819
Watts 350	Shipping Weight 8 lbs.

Standard Package 3

PARTY URN

. . . an exceptionally beautiful coffee urn for either making or serving coffee for the larger parties. It percolates twenty cups of coffee or the inside parts may be removed and the urn used as a serving piece only, in which case it will hold 28 cups. Its beautiful chromium finish and walnut covered "Cordex" handle and solid walnut base make it an urn to grace any table.

The urn is 14 inches high, with heavy copper body, chromium lining, nichrome wound mica unit. Equipped with an automatic thermostatic control for use on A. C. (alternating current) or with a protective fuse-link device for use on D. C. (direct current).

488/20 Urn
(for A.C. only)
Patented

Code "Aide"

Watts 350

0488/20 Urn
(for D.C.)
Patented

Code "Lasso"

Shipping Weight 7 lbs.

Standard Package 1





The HARMONY SERIES

A complete series of automatic thermostatically controlled percolators of four, six or nine-cup capacities. And—the automatic control device insures finer coffee for the water is heated to exactly the correct temperature for extracting only the desirable ingredients from the ground coffee. The smart decorative bands around the collar and base and the same parallel flutings at the bottom of the spout add greatly to their appearance. The new black handles strikingly set off the gleaming lustrous chromium finish that never tarnishes. Each is equipped with a nichrome wound mica element. Bodies of heavy seamless copper; driplless spouts. They match other appliances in the classic Harmony Pattern. For use on A. C. (alternating current) only.

1381/4 Four-Cup Size
Height 10 $\frac{1}{4}$ inches
Code "Dullard"

1381/6 Six-Cup Size
Height 11 inches
Code "Foyson"

1381/9 Nine-Cup Size
Height 12 $\frac{1}{2}$ inches
Code "Durum"

Watts 350
Patented

Shipping Weight 5 lbs.
Standard Package 3

The HEIRESS SERIES

The Heiress series enables a selection of just the right capacity percolator for the individual family—four, six or nine cups as desired. Made of the finest materials, with the lustrous chromium finish that will never tarnish reflecting the entire table setting in its rounded contours; panelled glass in cover and smart black wood handle; every one of these percolators is a splendid value at the price. Each is equipped with a long life nichrome wound heating element and protective fuse-link device. The body is heavy seamless copper with driplless spout.

380/4 Four-Cup Size
Height 10 $\frac{1}{4}$ inches
Code "Armour"

380/6 Six-Cup Size
Height 11 inches
Code "Arrack"

380/9 Nine-Cup Size
Height 12 $\frac{1}{2}$ inches
Code "Ashlar"

Watts 350
Patented

Shipping Weight 5 lbs.
Standard Package 3



The PIONEER SERIES

The Pioneer Pattern naturally includes a complete series of percolators of three practical capacities—four, six and nine cups. Straight lines are gracefully complemented by bands of circular rings and the solid walnut trimmings are strikingly effective in combination with Manning-Bowman's superior chromium finish that does not tarnish. The spout is artistic and of course is the non-drip type while the crystal glass top adds a sparkling touch to the overall appearance.

Here truly, are three percolators from which any family can select a coffee maker of the exact capacity to fill their needs. Their smart style appeal makes them desired by every homemaker.

Each is equipped with the durable nichrome wound mica unit and commercially pure aluminum inside parts. The linings are of lasting chromium which is easy to clean. A protective fuse-link device prevents overheating and the terminal pins are protected by a cut-out terminal guard. All bodies are of seamless copper.

(Illustrated on the left)
 383/4 Four Cup Size
 Height 9½ inches
 Code "Motet"

(Illustrated in the center)
 383/6 Six Cup Size
 Height 11 inches
 Code "Ozone"

(Illustrated on the right)
 383/9 Nine Cup Size
 Height 12 inches
 Code "Mufti"

Watts 350

Patented
 Standard Package 3

Shipping Weight 5 lbs.



The PURITAN

The smartest table will be all the more appealing with the Puritan percolator. Simple in design—modern in appearance, with just enough decoration to make it wholly attractive. It has all the superior features that distinguish Manning-Bowman percolators.

Finished in lustrous non-tarnishing chromium plate—capacity six full size cups. Seamless copper body—inset terminal guard—dripless pouring lip—equipped with a durable nichrome wound mica heating unit—aluminum inserts—protective fuse-link device that prevents overheating. Height, 9½ inches. Graceful solid walnut handle. And the best thing about the Puritan is that the coffee it makes is as good as the percolator looks.

396/6 Percolator

Patented

Code "Zaffer"

Watts 350

Shipping Weight 5 lbs.

Standard Package 6



The BEXLEY

If appearance alone decided the choice of a percolator, the Bexley need never fear competition. Its broad panels, distinctive spout, flat cover and smart black handle unite to make it most distinguished. And the Bexley is as good as it looks for it has all the superior features of other Manning-Bowman percolators, and is also equipped with an automatic thermostatic control which assures the correct coffee-making temperature of the water during percolation. It also prevents overheating should the current be connected when there is no water in the percolator.

Lustrous non-tarnishing chromium plate; heavy copper body; inset terminal guard; dripless spout, durable nichrome wound mica heating unit. Height, 11 inches. For use on A. C. (alternating current) only.

1389/7 Percolator

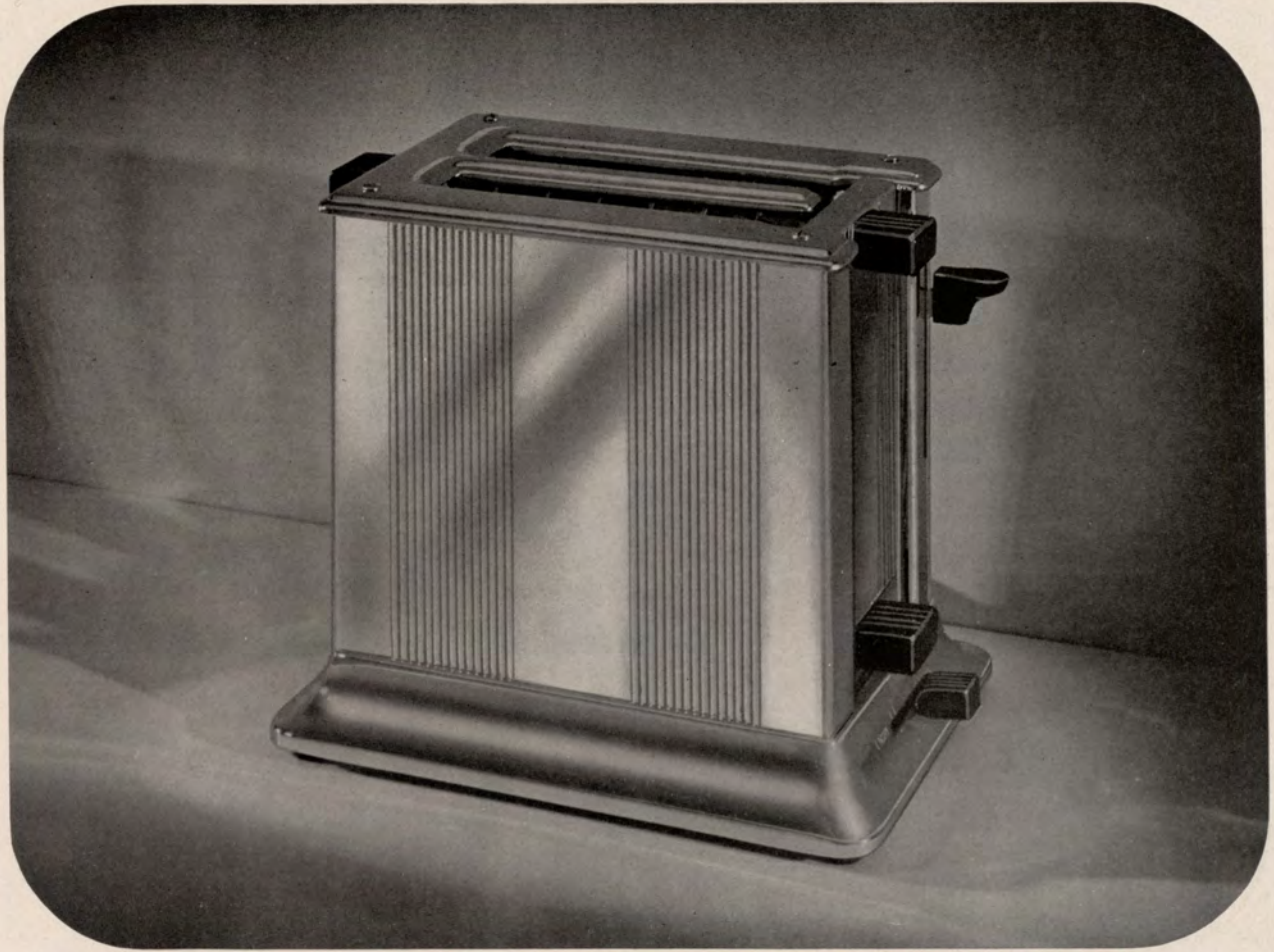
Patented

Code "Zax"

Watts 350

Shipping Weight 5 lbs.

Standard Package 3



The HARMONY Automatic Toaster

A compact, sturdy and efficient automatic two slice toaster—neatly designed—in the Harmony Pattern. Drop in two full size slices of bread—set the control for “light” or “dark”—plunge into your morning paper, and the “click” of the control lever announces when the toast is ready, just to the proper turn. Leave the toast in the toasting oven to keep it warm if you're not quite ready to eat it. The removable crumb drawer assures easy cleaning.

Finished in Manning-Bowman chromium plate, with smart jet black trimmings—8¼ inches long, 6 inches high, 4½ inches wide. For use on either alternating or direct current. A wonderful gift for anyone who likes toast—and who doesn't?

108 Automatic Toaster

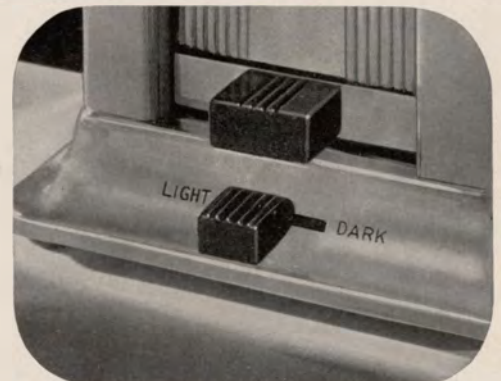
Patented

Code “Peacock”

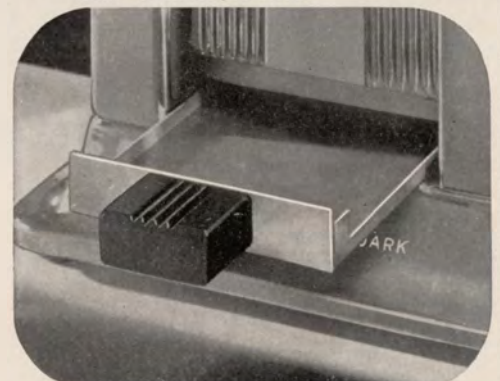
Watts 680

Shipping Weight 8 lbs.

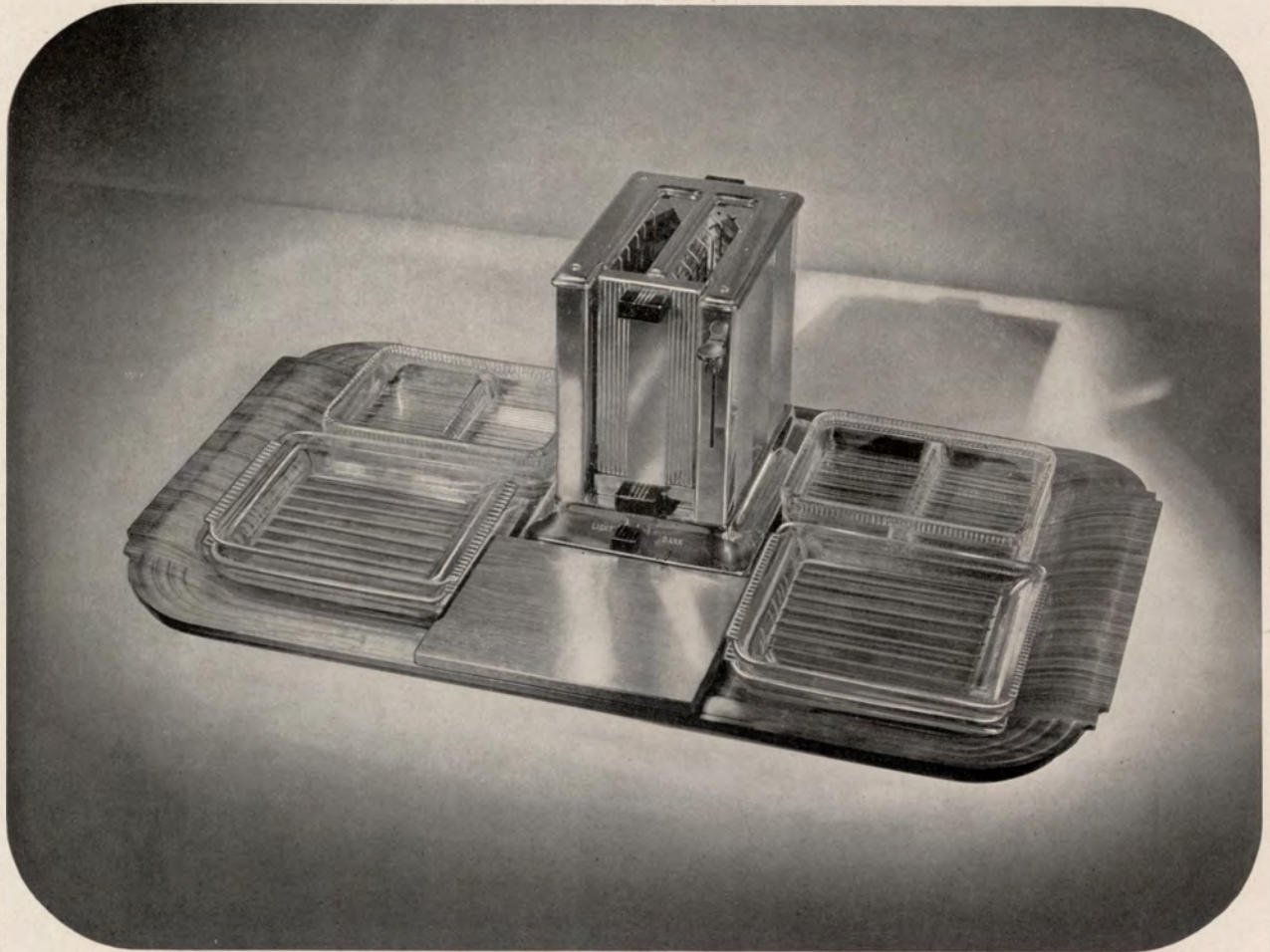
Standard Package 3



Regulating lever assures “light” or “dark” toast as preferred.



Convenient removable crumb tray.



BUFFETEER TOASTER SERVICE

Entertaining becomes a pleasure with the Buffeteer toaster service. Certainly nothing could more completely add to the success of breakfasts, buffet parties, or in-between luncheons. The automatic toaster quickly turns two full slices of bread into toast—announcing with a “click” that the toast is ready—and just as you want it, “light” or “dark,” according to how you have set the control lever in the base. A removable drawer catches all crumbs. Overall dimensions of the toaster are; $8\frac{1}{4}$ inches long, 6 inches high and $4\frac{1}{2}$ inches wide.

Besides the automatic toaster the service includes two double compartment crystal relish dishes and four crystal plates; also a solid walnut cutting board, all on a large, natural walnut serving tray, 25 inches x 15 inches. The same neat decorative motif has been carefully carried out in each and every appointment, thereby making the entire service an appealing concord of design.

1081 Toaster Service

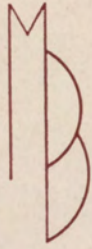
Patented

Code “Zeta”

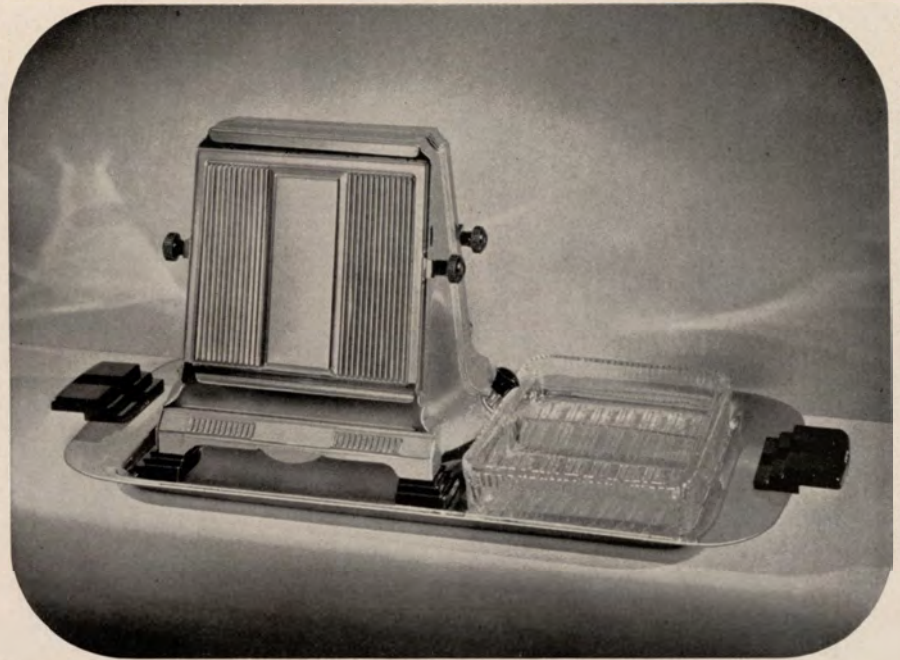
Watts 680

Shipping Weight 18 lbs.

Standard Package 3



**The
HARMONY
TOASTER
SERVICE**



Compact—efficient—this service consists of the Harmony two-slice toaster with its convenient “on-off” switch built right in the base. A double compartment crystal marmalade or jam dish fits snugly on the 18½ x 8 inch tray. Both toaster and tray are finished in lustrous non-tarnishing chromium, with black bakelite trimmings. Toaster has the convenient “tip and turn” type all metal doors and an efficient nichrome wound mica heating element. Matches other appliances in the Harmony Pattern.

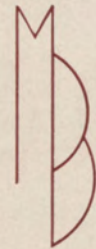
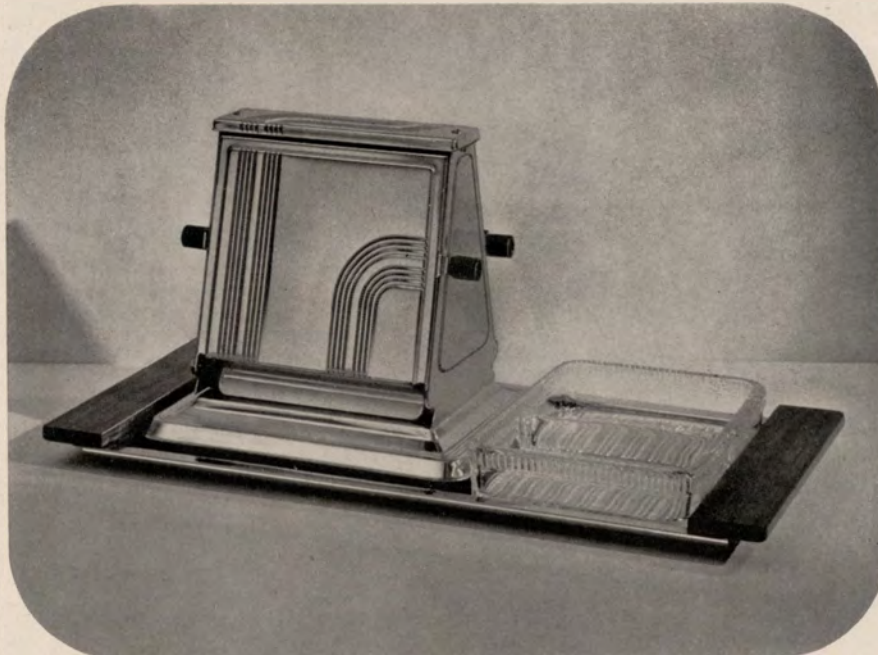
840 Toaster Service

Patented Code “Zeus”

Shipping Weight 8 lbs.

Watts 470

Standard Package 3



**The
PIONEER
TOASTER
SET**

Smart—this Pioneer service takes little space—moderately priced. Lustrous chromium finished two-slice toaster with solid walnut trimmings and double compartment crystal relish dish on a 16¼ x 7½ inch chromium tray with walnut handles. Bread is automatically turned by simply lowering the toaster’s heat-conserving metal doors. Heating unit is the speedy nichrome wound mica type. Handles and feet are heat resisting. Toaster 7 inches high. It’s a mighty attractive—and efficient—service.

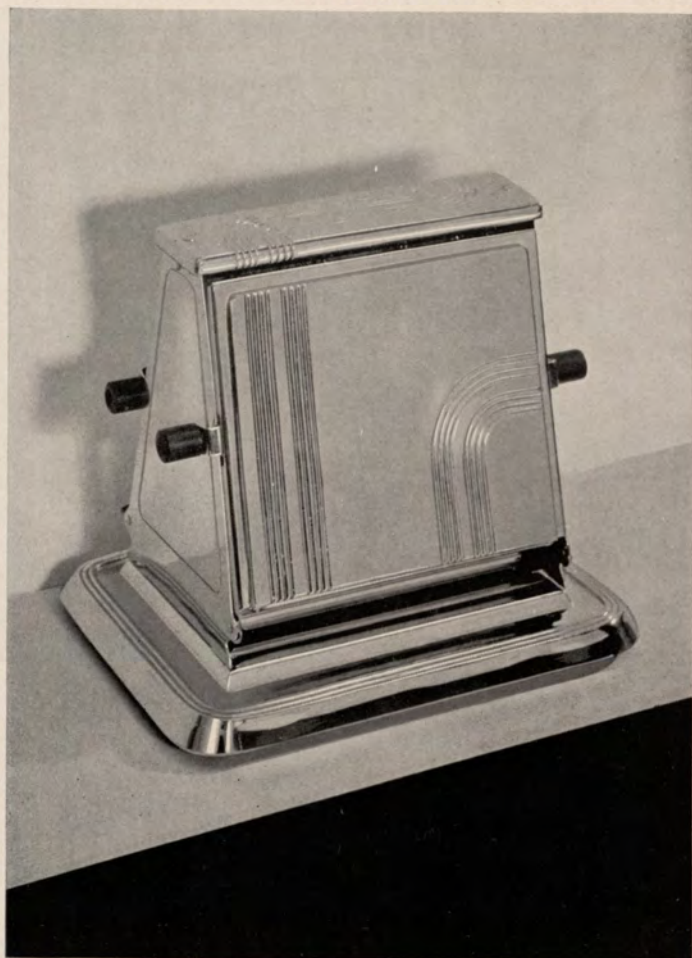
822 Toaster Service

Code “Zend”

Shipping Weight 8 lbs.

Watts 470

Standard Package 3



The HARMONY (With Enclosed Switch)

The switch encased in the base is a most practical and convenient feature of the Harmony Toaster. Simply put two slices in the Harmony Toaster, throw the lever to "on" position; lower the doors to turn the bread after one side is toasted; then throw the lever to "off" when the toast is made. All as simple as that—no plug-pulling necessary.

Beautifully finished in lustrous non-tarnishing chromium, with black moulded feet and knobs. Height, 7½ inches.

84 Toaster
Patented
Code "Derma"

Watts 470

Shipping Weight 3 lbs.
Standard Package 6



The PIONEER

An efficient two-slice toaster in the smart Pioneer Pattern—moderately priced too. The solid walnut trimmings nicely complement the all-over chromium finish that never tarnishes. Doors are of solid metal that conserve the heat and toast two full size slices of bread a rich even brown in a very short time. Bread is automatically turned by simply lowering the doors.

The heating unit is the speedy nichrome wound mica type. Handles and feet are heat resisting. Height 7 inches.

82 Toaster

Code "Nimrod"

Watts 470

Shipping Weight 3 lbs.

Standard Package 6



This "on-off" switch affords convenient finger-tip toasting control.

The PURITAN

. . . is an appealing toaster design by Manning-Bowman along more conventional lines. The circular decorations on the perforated doors and handles subtly relieve the otherwise straight line treatment. The wide flat top harmonizes with the base and adds to the sturdy business-like appearance of the whole.

Finished in brilliant chromium with walnut handles and feet, it is one of today's outstanding toaster values. Fast mica wound type nichrome heating element. Height 7½ inches.

83 Toaster

Code "Duet"

Watts 550

Shipping Weight 3 lbs.

Standard Package 6



The MANHATTAN

An outstanding toaster, of popular design, attractively finished, speedy in operation, and an unusual value at the price. Base, sides and top are black, heat resisting baked enamel while the "skyline" doors are of non-tarnishing chromium. Feet and handles are specially moulded to match the rest of the toaster.

Speedy nichrome wound mica unit; heat conserving solid metal doors with the reversible feature that turns the bread for toasting on the other side. Height 7½ inches.

78 Toaster

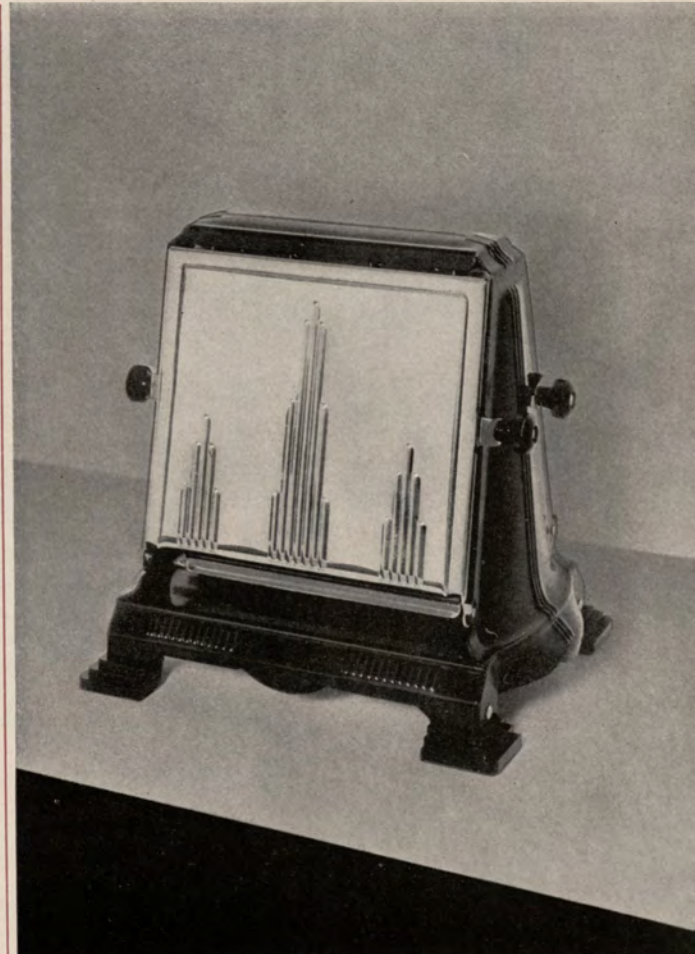
Patented

Code "Congo"

Watts 470

Shipping Weight 3 lbs.

Standard Package 6





**TWIN REVERSIBLE
WAFFLE IRON**

TWIN REVERSIBLE WAFFLE IRON

Bakes two full size appetizing waffles at once in the same time required to bake a single waffle in the ordinary iron! That's something every waffle-loving household will appreciate. The Twin Reversible overcomes once and for all the inconvenience of trying to satisfy hungry appetites with inadequate waffle servings.

Takes up no more space on the table than the usual type waffle iron and operates exactly the same too. First pre-heat the iron. When it is at the proper baking temperature the heat indicator in the center of the top registers "bake." Open the top and pour in batter for the first waffle, then close the iron and reverse it on its bakelite standards until the bottom section is on top; pour in batter for the second waffle and close cover. Result: two superbly baked full size waffles in the same time that it ordinarily takes to bake one.

The top and bottom sections of this reversible waffle iron hold the full size 7-inch diameter aluminum waffle grids equipped with speedy and durable nichrome heating elements. The iron itself is beautifully chromium finished and is mounted on two graceful walnut bakelite standards on a round chromium tray. The front handle, also of walnut bakelite, is divided into two sections for lifting the top and bottom covers. A special double expanding hinge at the back assures thick light waffles. The handle support is flattened top and bottom to always keep the waffle iron in the upright position for proper baking.

No. 5050 Waffle Iron

Patents Pending

Code "Zuni"

Watts 825

Shipping Weight 10 lbs.

Standard Package 3



Reversing the Twin Reversible waffle iron for baking the second waffle.



Top section of the Twin Reversible waffle iron ready for the waffle batter.



TWIN WAFFLE IRON



The new "Twin" bakes two delicious crunchy waffles at once. "Just the thing" for popular luncheons, Sunday night suppers, after-theatre snacks.

Manning-Bowman's new "Twin" is a compact efficient appointment that bakes twin waffle servings quickly and to a turn. The single base with its dual covers makes for faster, more economical waffle baking and also makes the "Twin" especially convenient to use.

The aluminum baking grids are good size, $5\frac{1}{2}$ inches square, and the back of each cover has a special expanding hinge that insures light, well-cooked waffles. The bottom tray is designed to catch any slight overflow of batter.

The "Twin" provides adequate servings for popular luncheons and Sunday night suppers of delicious waffles. It matches other appliances in the Pioneer Pattern and is chromium finished with solid walnut trimmings. Overall size: 14 inches long, $8\frac{3}{4}$ inches wide, and $4\frac{1}{4}$ inches high.

2525 Waffle Iron

Patented

Code "Optic"

Watts 600

Shipping Weight 8 lbs.

Standard Package 3

PIONEER WAFFLE SERVICE

Appetizing luncheons, Sunday night suppers, after-theatre snacks of delicious crunchy waffles can be prepared and served with the new and complete Pioneer Service. Now the several tasks of preparing and graciously serving delicious waffles are combined in this compact ensemble which may be easily carried to any room in the house or placed right on the table.

The service includes the attractive, efficient Pioneer Waffle Iron with a $3\frac{1}{2}$ pint capacity batter pitcher, a sugar duster for sugaring the waffles, and a swanky syrup pitcher and tray set. All of these appointments—so essential to waffle baking and serving—are conveniently grouped on a large practical all-purpose walnut serving tray which measures $17\frac{1}{2} \times 26\frac{1}{2}$ inches. The entire service in gleaming chromium and solid walnut is a harmonious ensemble in both design and finish.

And—the distinctive square-base waffle iron has all the regular Manning-Bowman features including full size 7-inch aluminum grids, neat heat indicator, and the special expanding hinge that insure well-baked, light, fluffy waffles.

16520 Waffle Service

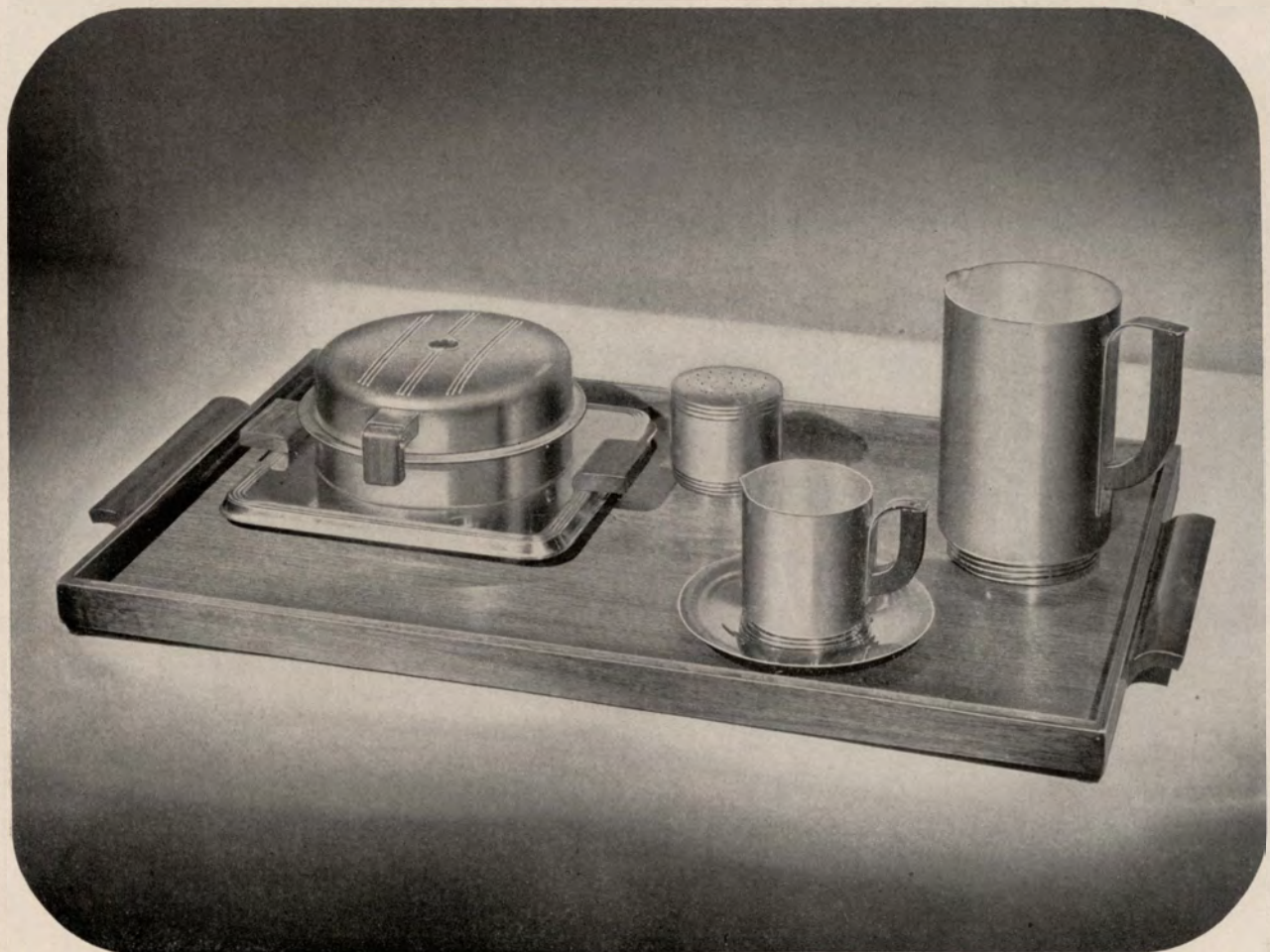
Patented

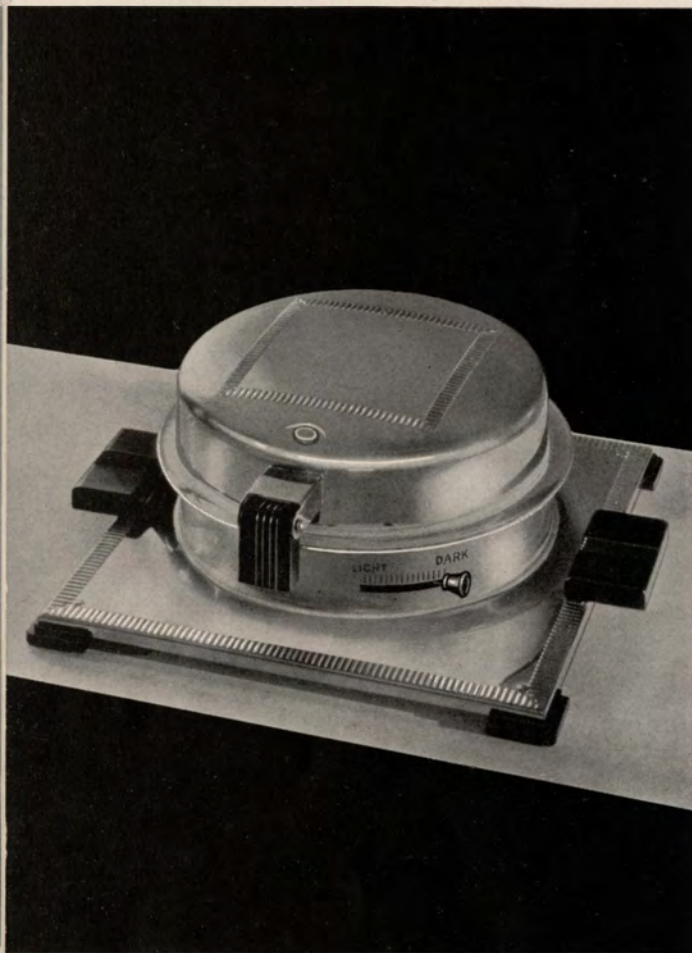
Code "Neuter"

Watts 660

Shipping Weight 18 lbs.

Standard Package 1





The HARMONY AUTOMATIC

The automatic control of the Harmony automatic waffle iron insures crisp, golden brown waffles done to a turn—"light" or "dark" as preferred, by simply adjusting the control lever in the base.

A small signal light in the cover tells when to pour in the batter. It also indicates when the waffle is done, at which time the current is automatically shut off.

Matches other electric appliances in the Harmony Pattern with its lustrous non-tarnishing chromium finish and contrasting black mounts. Grids full size, 7 inches in diameter; lower grid has overflow batter trough; expanding hinge insures thick light waffles. For use on A.C. (alternating current) only.

1648 Waffle Iron

Patented

Code "Pagan"

Watts 800

Shipping Weight 7 lbs.

Standard Package 3

The PIONEER AUTOMATIC

The stylized design of this square based automatic waffle iron is strikingly appealing—particularly in the Pioneer Pattern.

Waffles are automatically baked either "light" or "dark" simply by adjusting the control lever in the base. The little signal light in the cover tells when the iron is at baking temperature and also when the waffle is properly baked.

Finished in superior gleaming chromium with solid walnut trimmings. Large 7-inch aluminum grids, nichrome heating element, expanding hinge, overflow batter trough.

For use on A.C. (alternating current) only.

1653 Waffle Iron

Patented

Code "Zyme"

Watts 800

Shipping Weight 7 lbs.

Standard Package 3

The PURITAN AUTOMATIC

... cannot be surpassed for beauty and automatic waffle baking ability. A small red light in the cover indicates when the iron is at the proper "baking" temperature and—after the batter has been poured in—also tells when the waffle is done. By merely setting the lever on the "Light-Dark" scale, waffles may be baked lighter or darker as preferred and the electric current automatically shuts off when the waffle is baked.

The aluminum grids are full 7 inches in diameter and a special trough on the lower grid catches any surplus batter. An expanding hinge at the back assures light delicious waffles. Finished in Manning-Bowman fine chromium with walnut trimmings. For use on A.C. (alternating current) only.

1650 Waffle Iron

Patented

Code "Denim"

Watts 800

Shipping Weight 7 lbs.

Standard Package 3

The HARMONY

A delightful waffle iron designed in the classic Harmony Pattern. The square base, the circular design of the upper waffle iron and the neat design on the base and cover as well as on the trimmings give it an overall unity and charm.

A small heat indicator in the cover tells when the iron is ready to bake. As in all Manning-Bowman waffle irons the lower grid has an extending rim to catch any surplus batter. Full 7-inch aluminum grids and expanding hinge insure crisp delicious waffles. Finished in gleaming chromium with black mounts.

1646 Waffle Iron

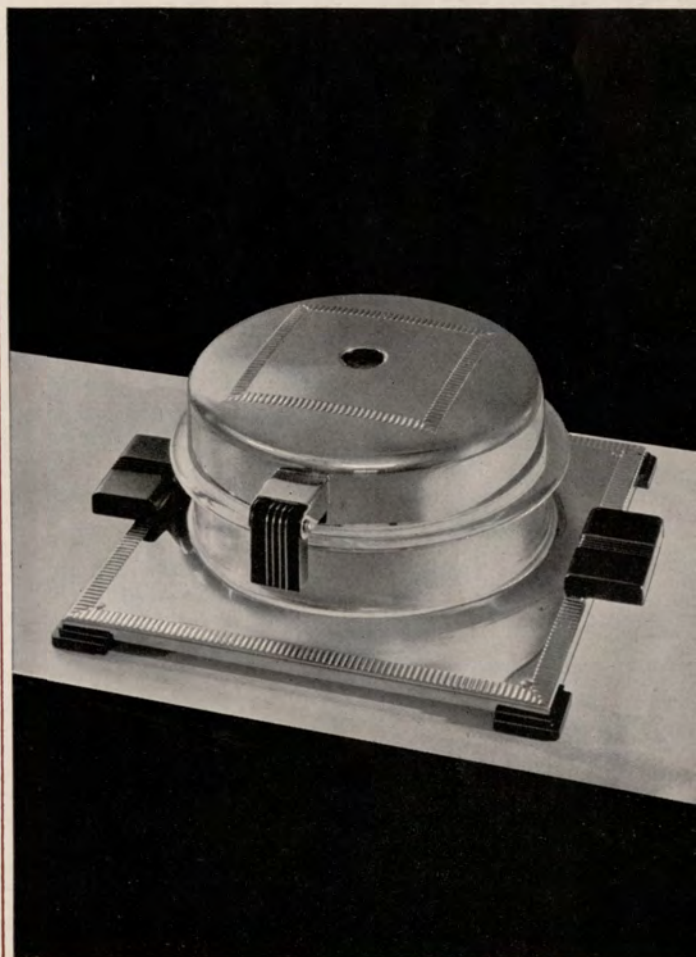
Patented

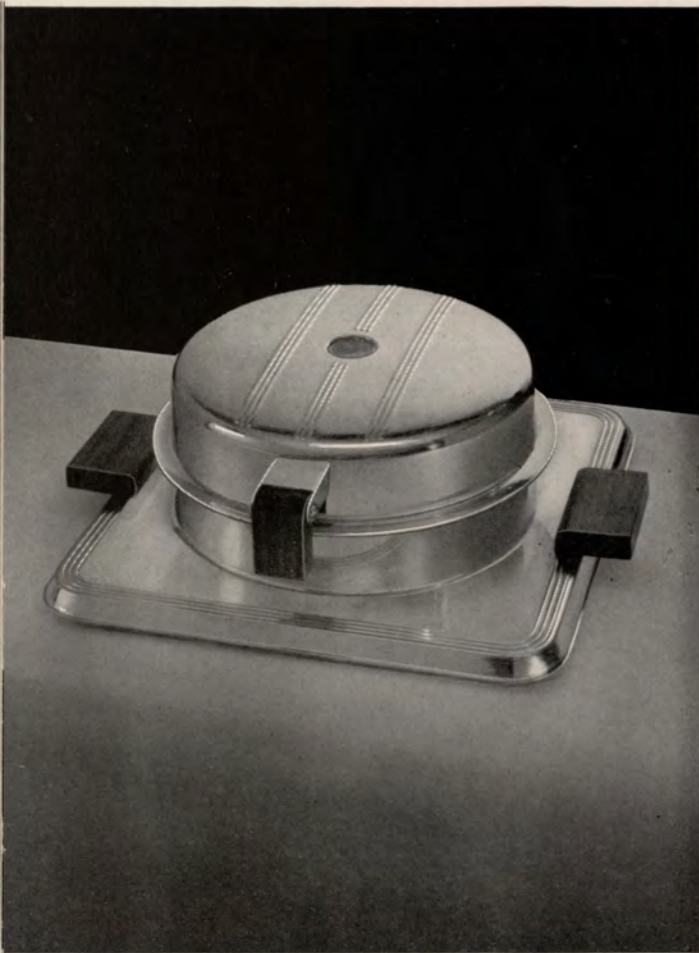
Code "Omen"

Watts 660

Shipping Weight 7 lbs.

Standard Package 6





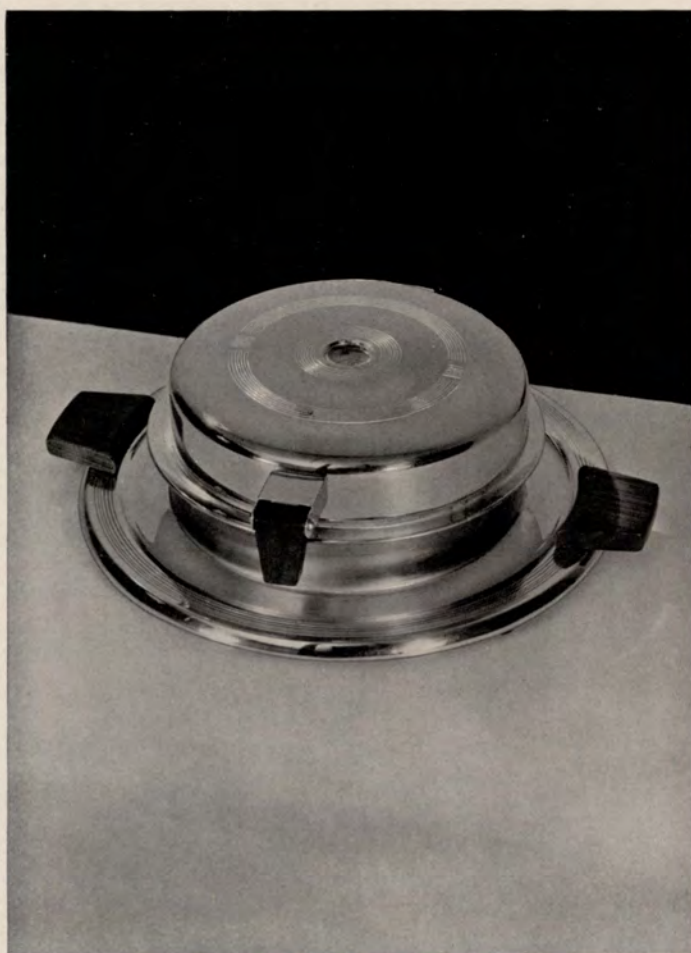
The PIONEER

The circular design of the waffle iron proper blends harmoniously with the distinctive square base to make the Pioneer one of today's smartest electric appointments.

Finished in lustrous chromium with solid walnut trimmings—full size 7-inch aluminum grids. The expanding hinge at the back insures light waffles while a batter trough on the lower grid takes care of any slight overflow. A small heat indicator in the cover tells you when to pour in the batter. Moderately priced, too!

1652 Waffle Iron
Patented
Code "Zulu"

Watts 660 Shipping Weight 6½ lbs.
Standard Package 6



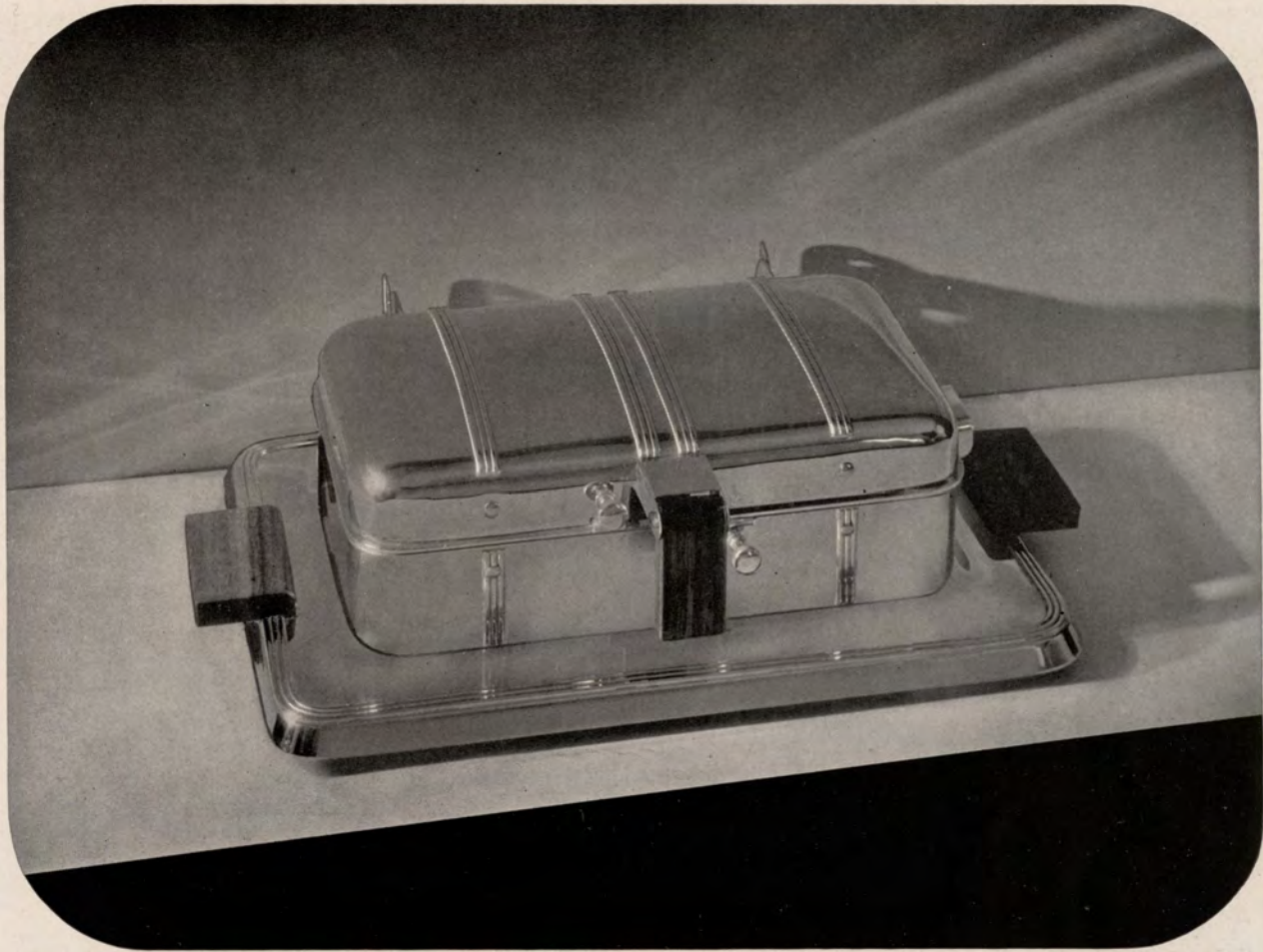
The PURITAN

This waffle iron with simple circular design and solid walnut trim will ever be in good taste. Another achievement in fine design by Manning-Bowman. The temperature indicator in the top shows when the iron is ready to bake and a batter trough on the lower grid prevents excess batter from running over the iron onto the base.

Large 7-inch aluminum grids and expanding hinge assure light, golden-brown, crispy, delicious waffles. Finished in mirror-like chromium finish and walnut handles of generous proportions. Moderately priced to make it a truly outstanding value.

1649 Waffle Iron
Patented
Code "Bice"

Watts 660 Shipping Weight 7 lbs.
Standard Package 6



The PIONEER TABLE COOKER

. . . fills that ever growing popular demand for a moderately priced Table Cooker. It will toast two full size sandwiches, fry bacon and eggs, chops or even a small steak; bake four pancakes at a time, and, by inserting the interchangeable waffle grids, bake four crispy delicious waffles. It's a prominent member of the ultra-smart Pioneer Pattern of Matched Appliances too, with its beautiful chromium finish and solid walnut trimmings.

A grease drain is notched in the lower cooking grid and a convenient grease pan is supplied with each cooker. Both lower and upper cooking grids of aluminum are large size $9\frac{3}{4} \times 5\frac{3}{4}$. A special device in the two hinges holds the upper part of the cooker in a convenient open position. Overall dimensions are 14 inches long, $8\frac{3}{4}$ inches wide and 4 inches high.

400 Table Cooker Only
Patented
Code "Mordent"

Watts 600

Shipping Weight 8 lbs.
Standard Package 3



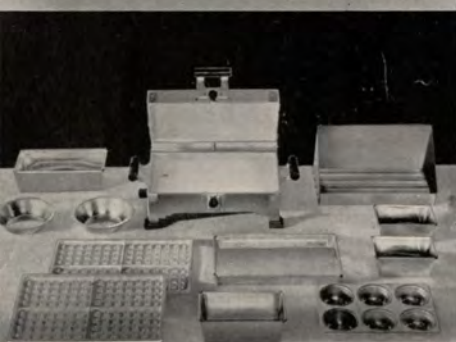
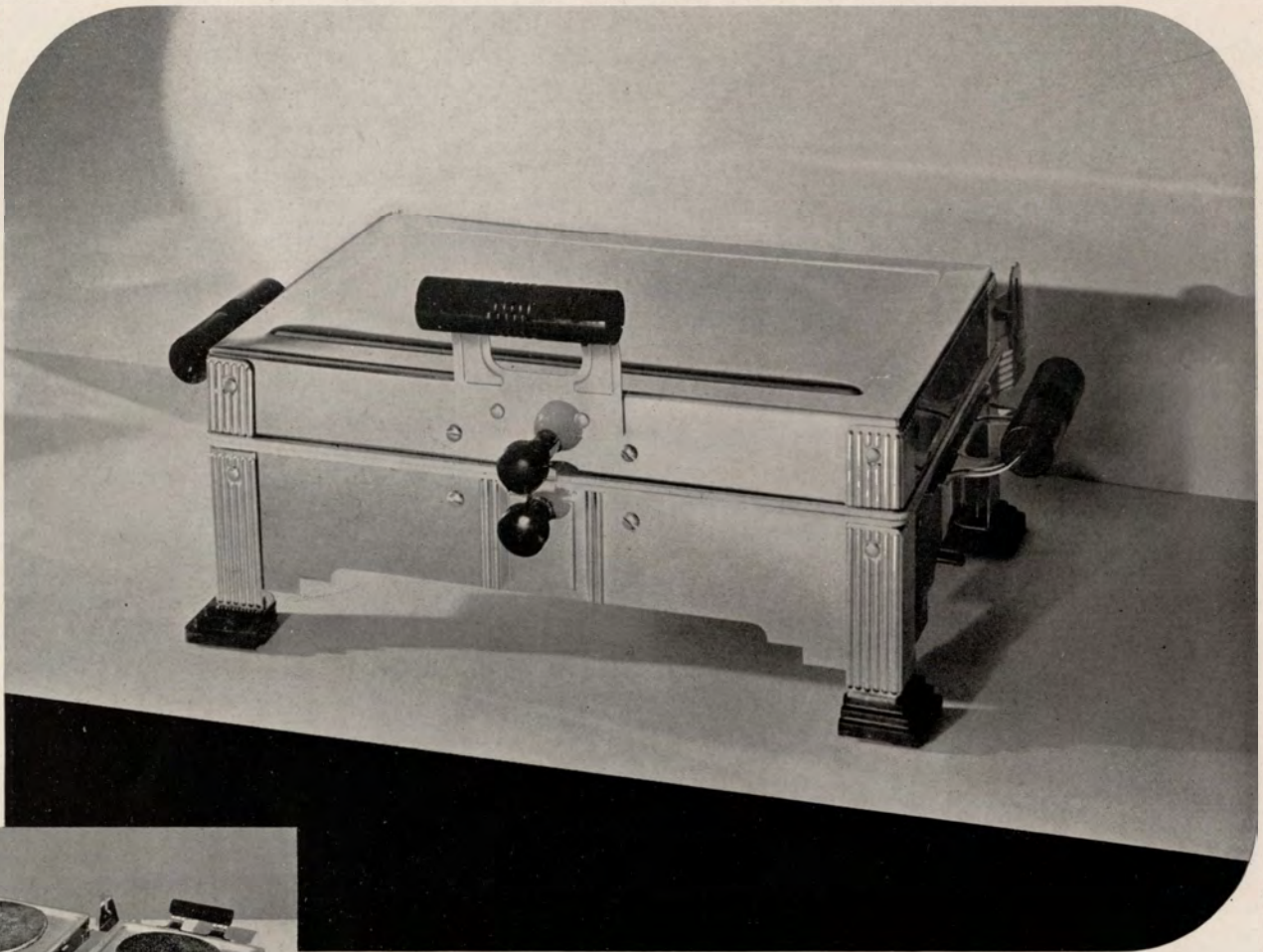
The Pioneer cooker may also be purchased with an extra pair of interchangeable waffle grids.

410 Combination Cooker-Waffle
Iron
Code "Owl"

Shipping Weight 11 lbs.

10 Waffle Grids Only
Code "Oar"

Shipping Weight 3 lbs

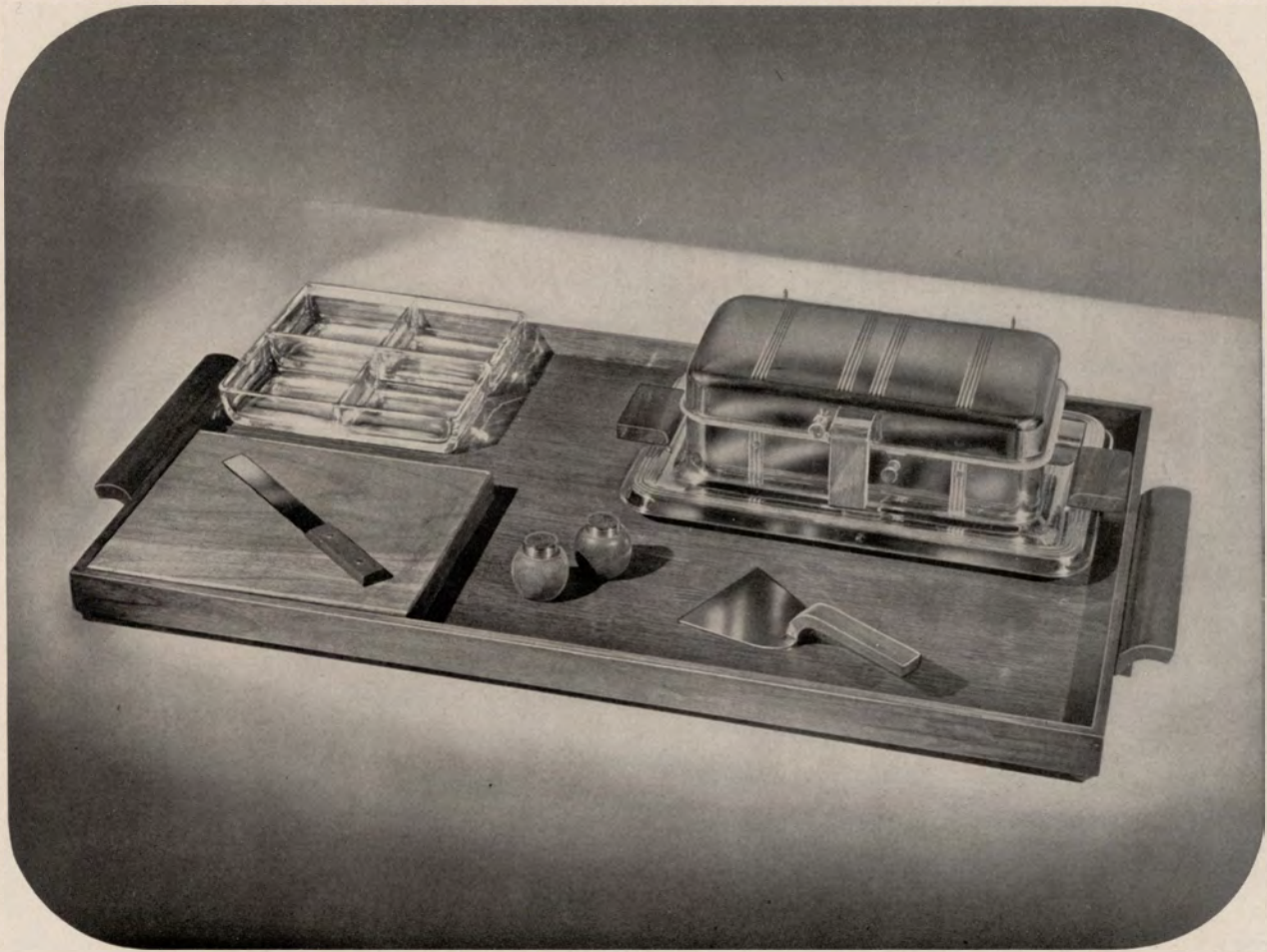


The COOK-ALL (A Harmony Pattern Appliance)

. . . is the only compact electric table cookery that bakes, grills, steams, fries, roasts, toasts, broils and boils. The entire ensemble includes: the cooker with plain cooking grids, the lower one of which has a grease drain; interchangeable waffle grids; a special oven, that performs all the cooking tasks of the ordinary kitchen range, and—a complete galaxy of special cooking pans.

The cooker and the oven are finished in gleaming chromium; trimmings are of wood in contrasting black. It is 9 x 13 $\frac{3}{4}$ inches and the grids are full size 7 x 11 inches.

- | | | |
|-------------------------------------|---------------|-------------------------|
| 516 Cooker Only | Code "Alter" | Shipping Weight 11 lbs. |
| 5168 Combination Cooker-Waffle Iron | Code "Amulet" | Shipping Weight 14 lbs. |
| 51689 Cook-All (at lower left) | Patented | Shipping Weight 18 lbs. |
| Watts 710 | | Code "Agate" |
| | | Standard Package 3 |
| 8 Waffle Grids Only | Code "Ode" | Shipping Weight 3 lbs. |
| 9 Oven and Pans Only | Code "Okra" | Shipping Weight 4 lbs. |



PIONEER COOKER SET

This very complete smart service is "just the thing" for buffet parties, afternoon luncheons, midnight snacks, or in fact, for preparing an entire meal at the table. Consists of the efficient Pioneer Table Cooker on a large walnut tray, 17½ inches x 26½ inches; two double compartment crystal relish dishes; solid walnut cutting board; chromium "Pick-Up" server with walnut handle; utility knife; solid walnut "Salt N' Pepper" Set.

The cooker will toast two full size sandwiches, fry bacon and eggs, chops or small steak; bake four pancakes at a time and, by inserting the extra interchangeable waffle grids, bake four waffle servings. Beautiful chromium finish with solid walnut trimmings; grease drain and pan; both cooking grids of aluminum, 9¾ inches x 5¾ inches. Overall cooker dimensions, 14 inches long x 8¾ inches wide x 4 inches high.

4001 Cooker Service (with 400 Cooker)

Code "Jaeger"

4101 Cooker-Waffle Service (with 410 Cooker)

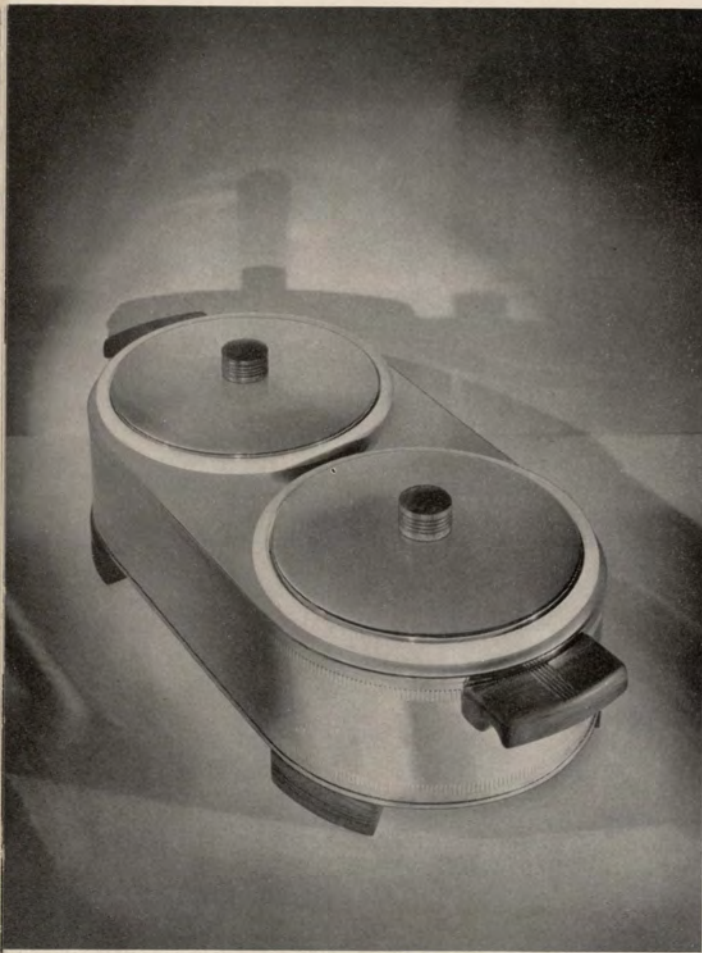
Code "Newel"

Patented

Watts 600

Shipping Weight 20 lbs.

Standard Package 3



The HARMONY BUFFET SERVER

Keeps foods hot, eliminating the hustle and confusion in serving large parties or late arrivals. Or—by disconnecting the current and packing the water container with cracked ice or cubes—keeps salads cold. One of the two large white vitreous china linings has three compartments and holds seven pints; the other (one compartment) five pints—ample capacity for a complete meal, including sauce or gravy.

Shimmering chromium, with knobs, feet and handles in genuine walnut, or ebonized wood to match other Harmony appliances. Dimensions: 25 inches long, 6 inches high and 10 inches wide.

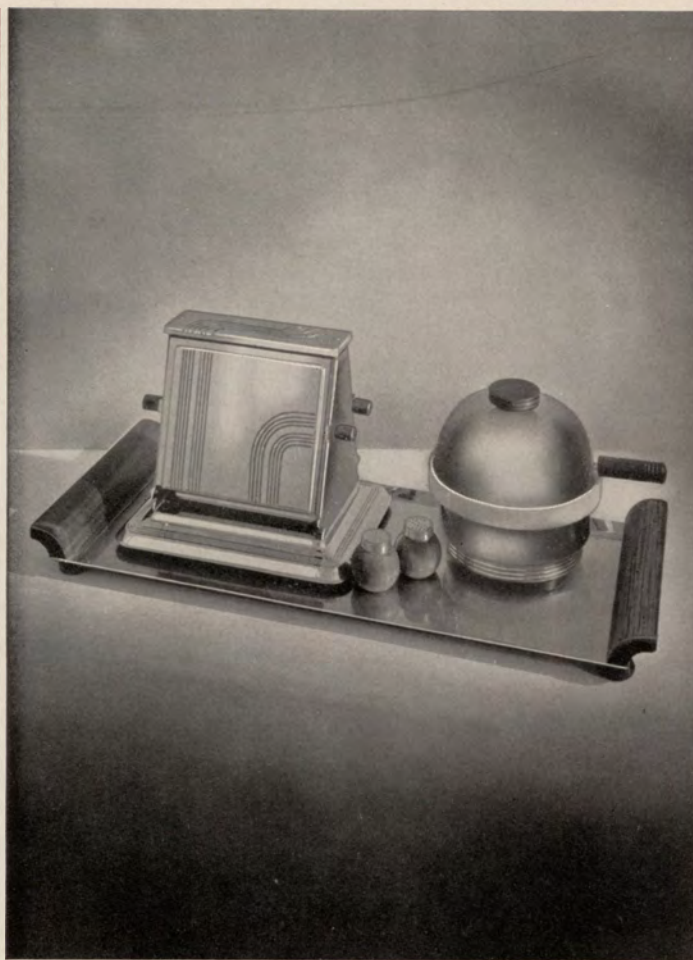
102/7 Walnut
Code "Lunette"

102/4 Black
Code "Mascot"

Watts 120

Shipping Weight 25 lbs.

Standard Package 1



The "GOOD MORNING" SERVICE

Eggs? Certainly! How many and how do you like 'em—boiled, poached, shirred, scrambled or fried? With crunchy toast and pepper and salt ready at hand. Four eggs boiled at the same time if you wish; two pieces of toast quickly and perfectly toasted in the "tip and turn" type toaster. Egg cooker, toaster and modern salt and pepper shakers all on a smart serving tray 19 $\frac{1}{4}$ inches long x 7 $\frac{3}{4}$ inches wide. Every morning is a "good morning" with this service before you.

Matches other appliances in the popular Pioneer Pattern.

821 Service

Code "Gilt"

Shipping Weight 11 lbs.

Standard Package 1

EGG COOKER

A most convenient little table appliance. Eggs in any style may be prepared right at the table with this efficient cooker. A small amount of water poured into the base makes the electrical contact and is almost immediately turned into steam which does the actual cooking. Soft boiled, medium boiled, or hard boiled eggs can be done out of the corner of your eye while reading the morning paper. An extra pan is supplied for frying, scrambling, shirring eggs, etc.

Finished in lustrous chromium with walnut handles and vitrified glazed porcelain lining, this appliance will round out any household equipment. A.C. (alternating current) only.

1076 Egg Cooker

Patented

Code "Gavel"

Amps. 3

Shipping Weight 4 lbs.

Standard Package 3

BOTTLE WARMER

An attractively designed, thoughtfully engineered and carefully manufactured appliance for heating baby's bottle. Stumbling downstairs to the kitchen in the dead of night to heat the "pride and joy's" bottle is no longer necessary. Connect the plug to a convenient outlet and in no time the bottle is being heated. A false bottom suspends the bottle in the water and prevents breakage.

Finished in non-tarnishing chromium with a vitrified white porcelain liner which has rounded edges for easy cleaning. A.C. (alternating current) only.

1075 Bottle Warmer

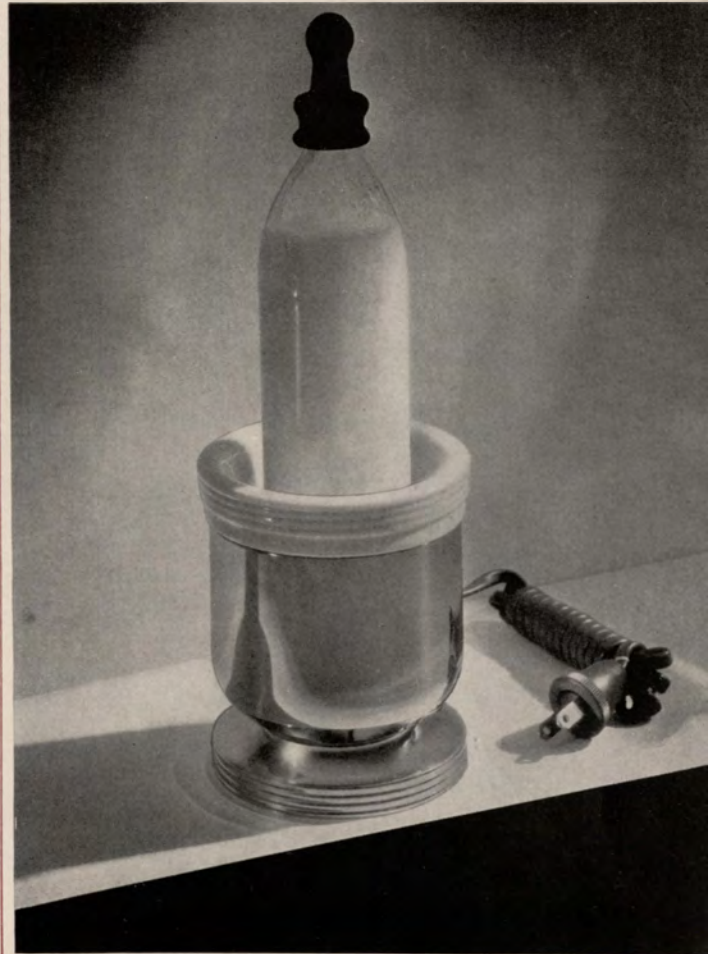
Patented

Code "Gamut"

Amps. 3

Shipping Weight 3 lbs.

Standard Package 3



PIONEER CHAFING DISH

"Good things to eat" is the single purpose of this new and gracefully designed Pioneer chafing dish. Convenient to use—and always at hand, whether to aid in the preparation of a regular meal or to fulfill the fancy of any fastidious appetite.

The Pioneer is finished in lustrous non-tarnishing chromium, with solid walnut trimmings. Equipped with a two speed nichrome heating element—high, for cooking; low, for simmering. Has a water pan as well as a cooking pan—each of three pint capacity. Height 8 inches, diameter 11¼ inches.

603 Chafing Dish

Code "Jeer"

Watts 550 (high heat) Shipping Weight 10 lbs.
150 (low heat)

Standard Package 3

HARMONY CHAFING DISH

A particularly attractive table appointment is this stunning chafing dish in the classic Harmony Pattern of Matched Appliances. It, too, is finished in lustrous non-tarnishing chromium and has jet black trimmings of gem-like Arinite.

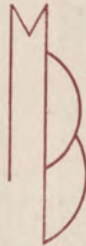
It is equipped with two heating units—high, for cooking—and low, for simmering and there is a water pan as well as a cooking pan, each of three pint capacity. Height 8 inches, diameter 11¼ inches.

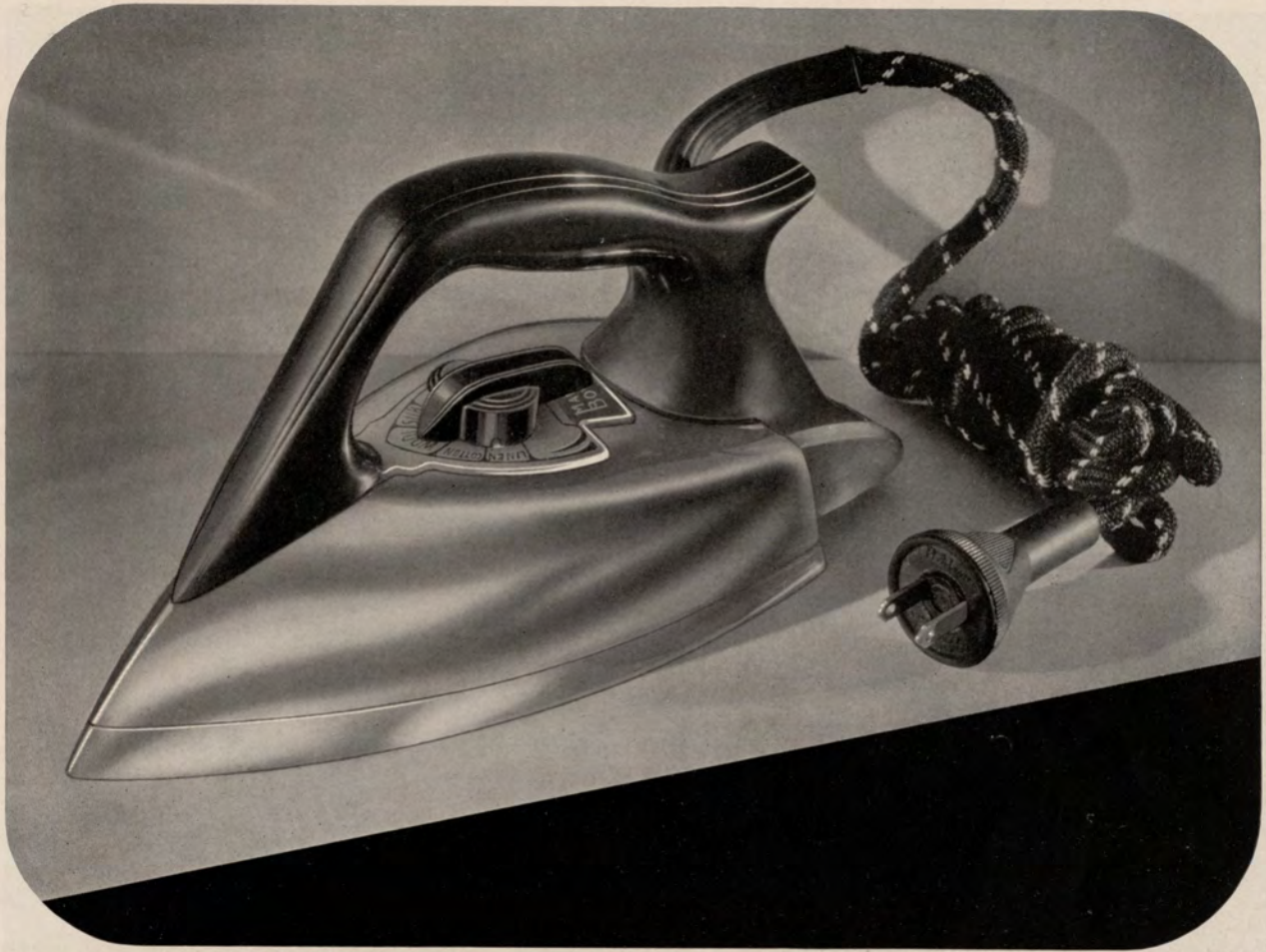
601 Chafing Dish

Code "Apple"

Watts 550 (high heat) Shipping Weight 10 lbs.
150 (low heat)

Standard Package 3





The LIGHTWEIGHT CHAMPION

A superior, fully automatic, lightweight flatiron—for finer, faster ironing with less effort. It weighs only $4\frac{1}{2}$ pounds, affording greater ironing comfort while its lightness in weight is compensated for by the higher 1000 Watt "24 Year" heating element which actually gives greater speed and efficiency than old time models. For 24 years this heating element of superior construction has given unprecedented service.

The "Marksman" heat control, located conveniently at the finger tips, is easily operated and assures the correct ironing temperatures for all kinds of fabrics. An "off" switch also incorporated in the control for turning off the current is especially convenient. These correct ironing temperatures are in turn maintained by the newly perfected "Guardman" thermostat.

Another new development is the tapered ironing plate designed for easier, more efficient operation and affording perfect heat distribution under all conditions. Because of this new ironing plate the iron actually glides with an easy, natural motion. Its beveled edge and fine point are ideal for working around buttons, under pleats, etc. The corners on the back of the ironing plate permit ironing on the backward stroke as well as the forward strokes and prevent wrinkles. The cool, full sized handle and perfect balance of the iron add to its ease of operation. It is equipped with the finest 7-foot 10,000 cycle attached cord and durable plug. For use on A. C. (alternating current) only. Underwriter Approved.

1492 Automatic Iron

Patented

Code "Abyss"

Watts 1000

Shipping Weight $5\frac{1}{2}$ lbs.

Standard Package 3



The WELTERWEIGHT CHAMPION

. . . Another lighter weight automatic flatiron. It weighs only 5 pounds and contains a faster, more efficient 800 watt—"24 Year" heating element—time tested to give customer satisfaction.

The "Marksman" heat control assures the correct temperature for ironing all types of fabrics and all ironing temperatures are maintained indefinitely by the "Guardman" thermostat. There is an "off" switch incorporated right in the control for turning off the current. Its cooler scientifically designed handle and ironing plate provide an unbelievable ease and efficiency of operation. Buttons, seams and pleats no longer offer an ironing problem. Furnished with 7-foot long 10,000 cycle attached cord and plug, convenient heel rest and Manning-Bowman long wearing, ever bright, superior chromium finish. For use on A.C. (alternating current) only. Underwriter Approved.

1491 Automatic Iron

Patented
Code "Acme"

Watts 800

Shipping Weight 6 lbs.

Standard Package 3



The MIDDLEWEIGHT CHAMPION

A standard six pound automatic flatiron that irons quickly and economically. Equipped with the superior 700 watt "24 Year" heating element. The "Marksman" heat control and "Guardman" thermostat assure the correct temperature for ironing all types of fabrics, from artificial silks to heavy linens. The ironing plate is so designed that the heat is perfectly distributed and its beveled edge and fine point make it an easy matter to iron around buttons, under pleats and between seams. The solid walnut handle is both cool and comfortable and combined with the perfect balance of the Champion iron, does away with much of the usual ironing toil. The heel rest is a great convenience.

Finished in lustrous non-tarnishing chromium, with six-foot 10,000 cycle cord and plug. Underwriter Approved.

For use on A.C. (alternating current) only.

560 Automatic Iron

Patented
Code "Hoder"

Watts 700

Shipping Weight 7 lbs.

Standard Package 3

The CHAMPION AUTOMATIC

Another "champion" 6 pound, automatic iron with the "24 Year" 700 watt unit. It embodies all the superior Manning-Bowman features and has the same "Marksman" heat control dial and "Guardman" thermostat that assure the proper heat for all fabrics, from artificial silks to heavy linens. The ironing plate with beveled edge and fine point is ideal for ironing around buttons, under pleats and between seams and its new scientifically designed ironing plate affords perfect heat distribution. The cool comfortable handle, perfect balance and convenient heel rest make it a pleasure to use.

Finished in lustrous, non-tarnishing chromium with six-foot 10,000 cycle cord and plug. Underwriter Approved. For use on A. C. (alternating current) only.

1490 Automatic Iron

Patented

Code "Agar"

Watts 700

Shipping Weight 7 lbs.

Standard Package 3

FABRIC SELECTOR FLATIRON

The special Fabric Selector indicator with which this iron is equipped tells just when the iron is at the correct temperature for ironing any type of fabric—artificial silks, silks, woolens, cottons and linens. The Fabric Selector iron also has all the other superior Manning-Bowman features, including the famous "24 Year" heating element; larger ironing surface; rounded heel; "tilt-back" heel rest; cooler natural-grip handle; durable cord and plug.

It is finished in lustrous non-tarnishing chromium, with contrasting black handle. 5 pound weight. Underwriter Approved.

Available with a convenient "on-off" switch on the cord or with the standard cord and plug set.

1582 Iron (with standard cord and plug set)

1583 Iron (with "on-off" switch)

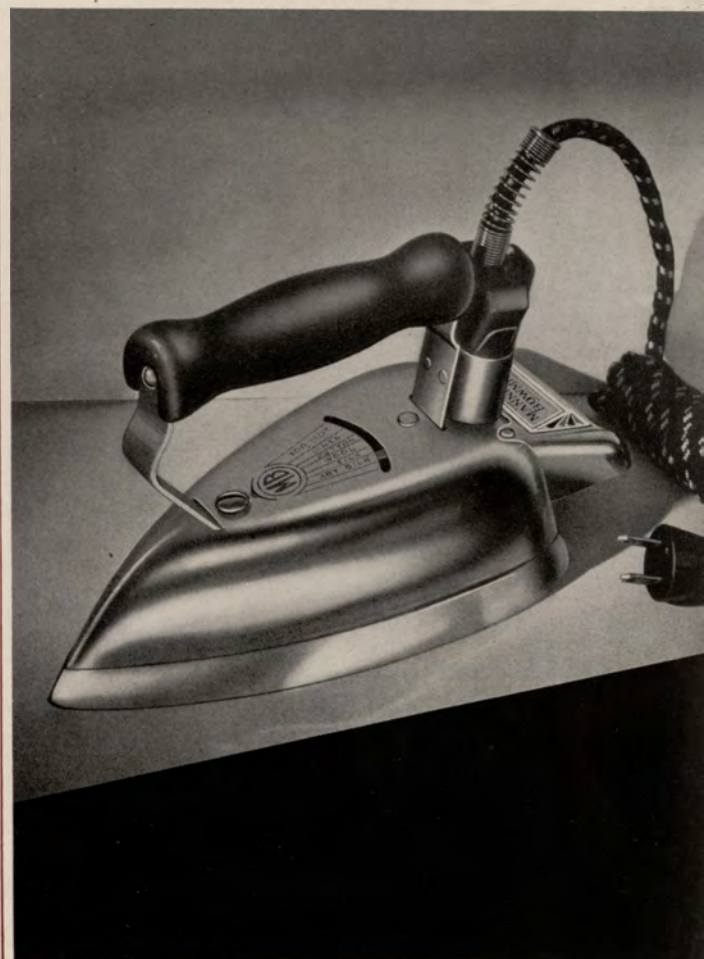
Code "Koff"

Code "Kayak"

Watts 525

Shipping Weight 7 lbs.

Standard Package 6



The AUXILIARY FLATIRON

The Auxiliary Iron weighs only three pounds and can be put right into the traveling bag for the week-end trip or for a prolonged visit. And on such a trip what a convenience it is for keeping clothes neatly pressed. Just the thing, too, for ironing the miscellaneous light fabrics that require pressing from day to day in every household.

The Auxiliary is beautifully finished in non-tarnishing chromium, with a cool, comfortable solid walnut handle and with brown cord to match. Like all other Manning-Bowman irons, it too is equipped with the famous "24 Year" heating element and the convenient "tilt-back" heel rest. Underwriter Approved.

1584 Flatiron

Code "Jerkin"

Watts 300

Shipping Weight 4 lbs.

Standard Package 3

NON-AUTOMATIC FLATIRON

Without automatic features but in all other respects a superior flatiron—especially at the unusually low price. Like the other Manning-Bowman irons it is equipped with the famous "24 Year" heating element that for 24 years has proved its superiority; the ironing plate has the convenient beveled edge and fine ironing point; weighs 5 pounds; the comfortable walnut handle is remarkably cool; the heel bracket permits the iron to be readily tilted back when not in use.

Finished in Manning-Bowman chromium plate that will not tarnish. Cord and plugs of superior quality. Underwriter Approved.

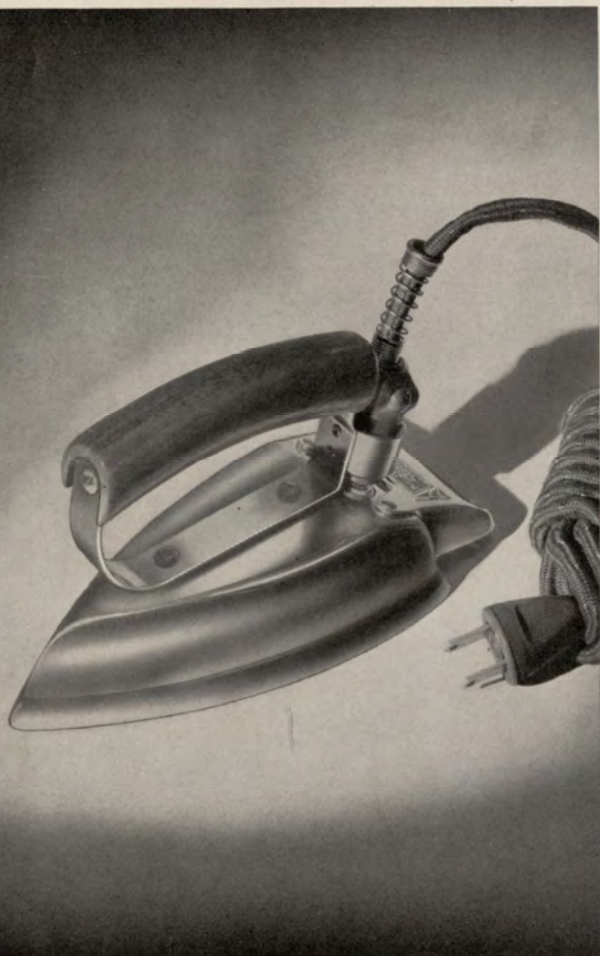
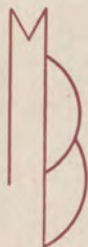
1585 Flatiron

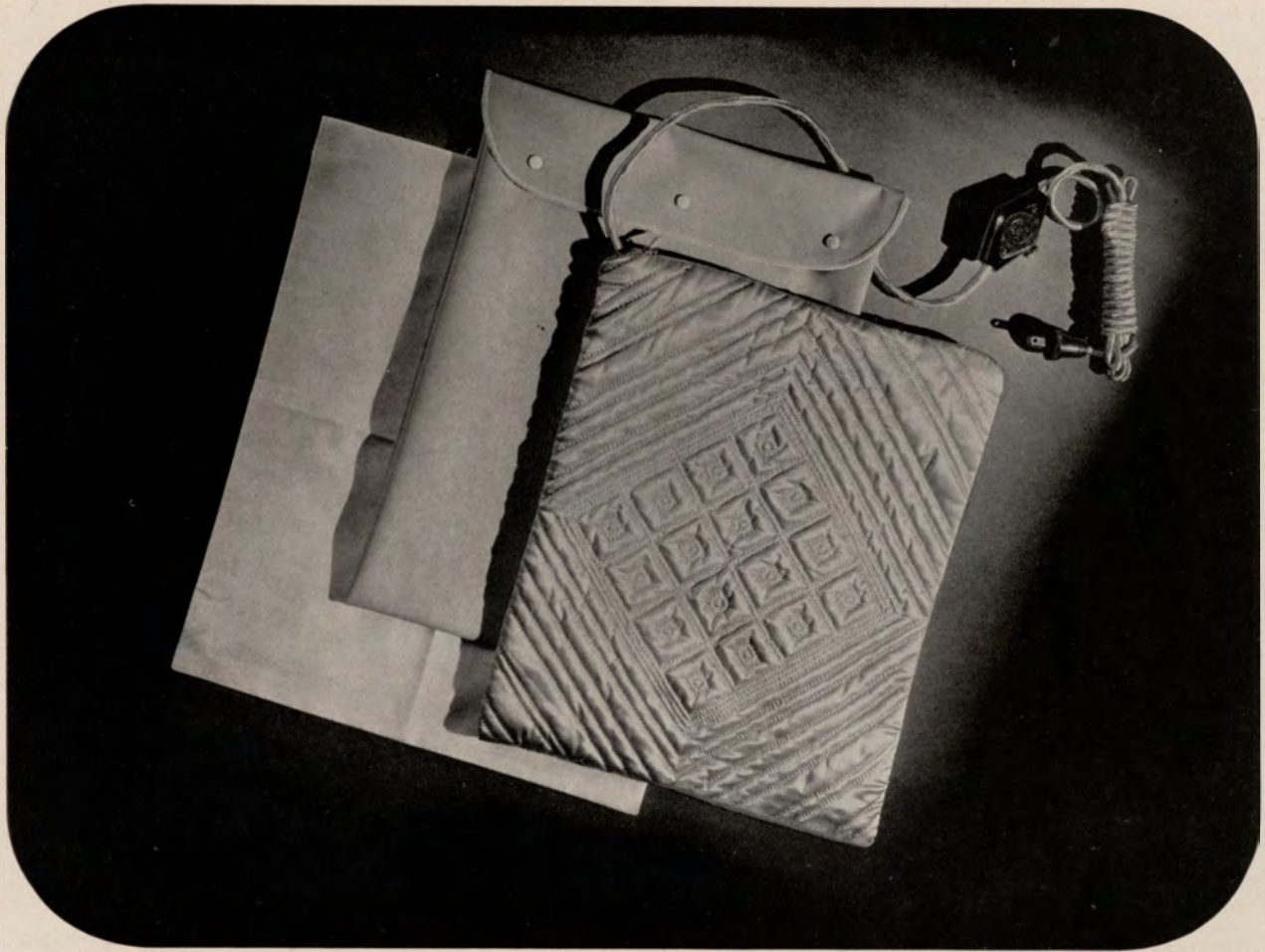
Code "Jetty"

Watts 525

Shipping Weight 6 lbs.

Standard Package 6





HAND-QUILTED PAD

A beautiful heating pad of the finest mechanical perfection with an exquisite hand quilted Panne satin covering—an entirely new achievement in heating pads for Milady's boudoir. The pad which is approved by the Underwriters' Laboratories, maintains three degrees of heat by the use of two carefully constructed, non-radio interfering thermostats. A convenient switch on the cord in turn controls the thermostats.

For dry cleaning, the luxurious quilted cover may be removed by means of a metal slide fastener. It is equipped with a muslin slip cover and rubber waterproof envelope to protect the pad against moisture.

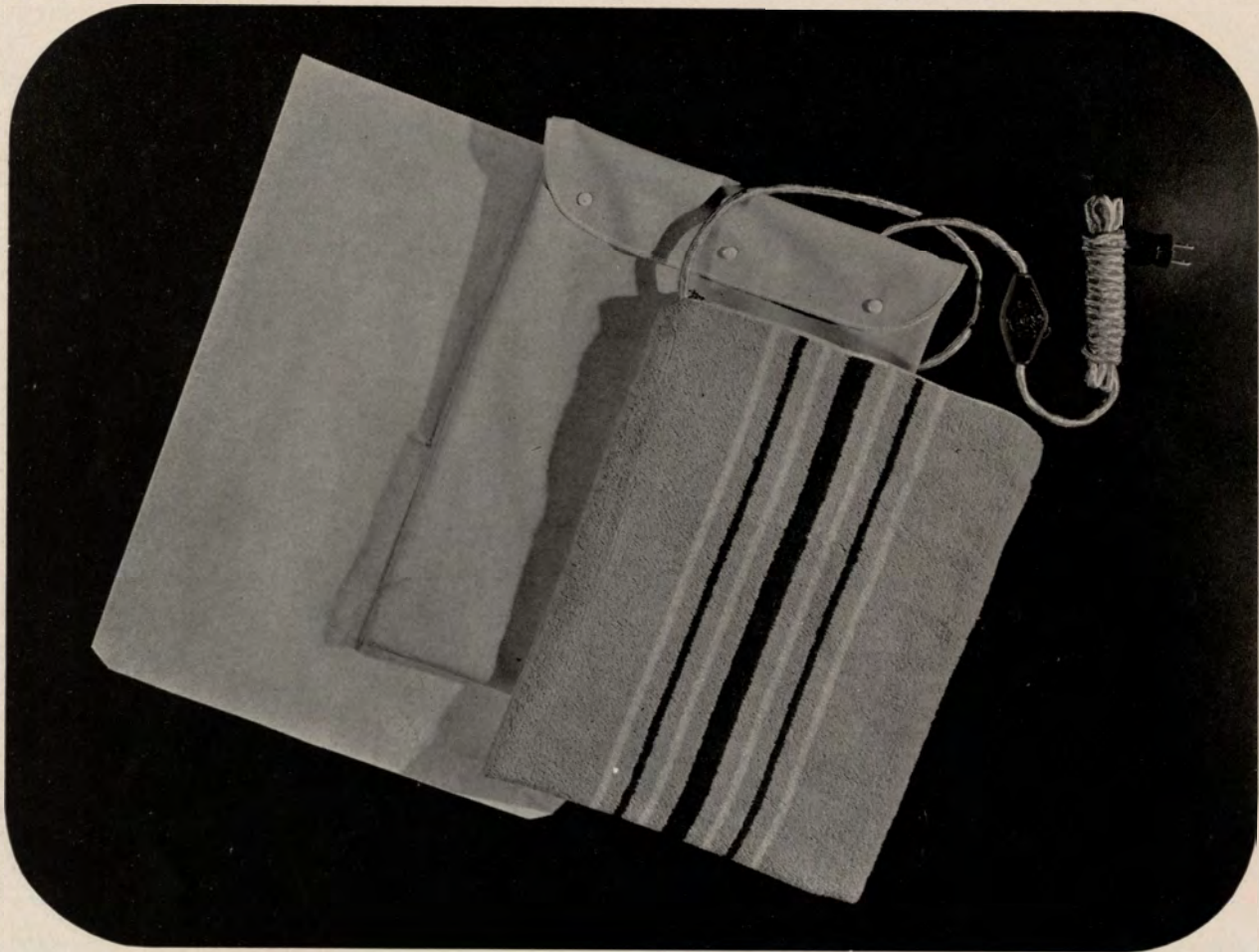
Available in sea green, embassy blue, peach and candlelight yellow with ten feet of cord to match.



The hand quilted Panne satin cover is removable for cleaning by means of the metal slide fastener.

1691/2	Sea Green	Code "Duffer"
1691/3	Embassy Blue	Code "Damask"
1691/5	Peach	Code "Dwarf"
1691/8	Candlelight	Code "Duress"

Watts	65
Shipping Weight	2 lbs.
Standard Package	1



The COMFORTER

The new luxurious terrycloth Comforter is most attractive in appearance. It is available in two color combinations: light green with decorative stripings of white and dark green, or coral with white and dark brown stripings; ten-foot cord to match. By means of a metal slide fastener the color-fast shrink-proof terrycloth cover may be removed for washing—a convenient sanitary feature.

The pad is full size 12 x 15 inches and has two non-radio interfering thermostats that regulate the three degrees of heat which are controlled by the three-heat switch on the cord. Equipped with a protective muslin cover and a rubber waterproof envelope or, the Comforter may also be purchased without the rubber envelope.

1696/1 Coral (Underwriter Approved) Code "Jetsam"
 1696/2 Green (Underwriter Approved) Code "Jib"
 696/1 Coral (No Rubber Cover) Code "Jowl"
 696/2 Green (No Rubber Cover) Code "Madcap"

Watts 65

Shipping Weight 2 lbs.

Standard Package 3



By means of the slide fastener the terrycloth cover may be removed for cleaning.



The GUARDIAN

The Guardian has a beautiful terrycloth cover which is readily removed for washing by means of three fasteners. It is available in light green with white stripes, or coral with white stripes. 12 x 15 inches are the dimensions of this full size pad. Equipped with two non-radio interfering thermostats that regulate the three degrees of dry healthful heat. These three heats are in turn controlled by the three-speed switch on the ten-foot cord.

Additional conveniences are the protective muslin cover and the rubber waterproof envelope. (May also be purchased without the rubber envelope.)

1695/1 Coral (Underwriter Approved) Code "Juju"
 1695/2 Green (Underwriter Approved) Code "Jurel"
 695/1 Coral (No Rubber Cover) Code "Jupe"
 695/2 Green (No Rubber Cover) Code "Jupon"

Watts 65

Shipping Weight 2 lbs.

Standard Package 3



The LUXURY

The soft eiderdown cover of this pad adds a feeling of luxury to its comforting warmth. The cover is available in either green or cedar and has a ten-foot cord to match.

The pad is full size 12 x 15 inches, with two non-radio interfering thermostats to regulate the three degrees of heat which are controlled by the three-heat switch on the cord.

Equipped also with a sanitary rubber waterproof envelope and a protective muslin cover.

1694/2 Green (Underwriter Approved) Code "Juno"
 1694/7 Cedar (Underwriter Approved) Code "Junta"

Watts 65

Shipping Weight 2 lbs.

Standard Package 3



CORD SETS

All Manning-Bowman Cord Sets are made of the finest materials for long wear and efficient operation. They are tested and approved by the National Underwriters' Laboratories.

No. 10 Display Assortment

Code "Blain"

Six 7-foot long, cord sets are packed individually in a colorful counter display. All are superior 10,000 cycle type cords with heavy duty black glazed cotton coverings and white tracers. The attachment plugs are assembled with sturdy expanding-type metal springs rather than screws. Silver plated terminal contacts—pliable rubber wall plugs—heat resisting rubber cord protectors. Sold six cord sets to a display container.

No. 23 Display Assortment

Code "Helix"

Six 6-foot long cord sets of the 3,000 cycle type with the new type miniature attachment plugs are packed individually in the attractive display container. Three sets are of brown art silk with green tracers while the other three are black art silk with white tracers. Sold six assorted sets to a display container.



TERMS

2% 10 days from date of shipment, net 30 days.

GUARANTEE

All Manning-Bowman appliances are thoroughly tested before leaving our factory to make sure they are in perfect condition. Exclusive of cord and plugs, they are guaranteed against factory defects for one year provided they are used according to the instructions accompanying each appliance. Under these conditions we agree to repair or replace any defective parts if the appliance is returned to us prepaid, or to our authorized service stations.

VOLTAGE INFORMATION

Manning-Bowman appliances are made to operate on a voltage range of from 110 to 125. They should not be used on any other voltage.

SPECIAL VOLTAGES

Some appliances can be furnished for use on 32 volt circuits for which there is an extra charge of 50c list. They are as follows:

URNS (except Automatic Urns) AND PERCOLATORS

SPECIAL NOTE—When supplied for 32 volt circuits these appliances cannot be equipped with fuse-link protective devices.

FLATIRONS—(except Automatic Flatiron)

SERVICE STATIONS

For the convenience of customers and in the interest of speedier repair service, Manning, Bowman & Co. maintains the following service stations.

SPECIAL NOTE—All heating pads should be returned to the factory because special equipment is required to repair them.

Brandt Elec. Co.
904 Pine St.
St. Louis, Mo.

Hendrie & Bolthoff Mfg. & Sup. Co.
1635 17th St.,
Denver, Colo.

Houghton's Ltd.
313 Church St.,
Toronto, Ontario, Canada

Howell's Elec. & Sup. Co.
522 Union St.,
Seattle, Wash.

Manning, Bowman & Co.
Meriden, Conn.

Manning, Bowman & Co.
Merchandise Mart,
Chicago, Ill.

Manning, Bowman & Co.
150 Post Street,
San Francisco, Calif.

Maxwell & Frank
First at Wall St.,
Spokane, Wash.

Morrison Elec. Sup. Co.
1236 S.W. Washington St.,
Portland, Ore.

Motor & Machinists Supply Co.
230 South San Pedro St.,
Los Angeles, Calif.

J. F. Zwiener Electrical Company
229 "B" St.
San Diego, Calif.

MANNING, BOWMAN & COMPANY
MERIDEN, CONNECTICUT

MANNING, BOWMAN & CO.
Meriden, Connecticut