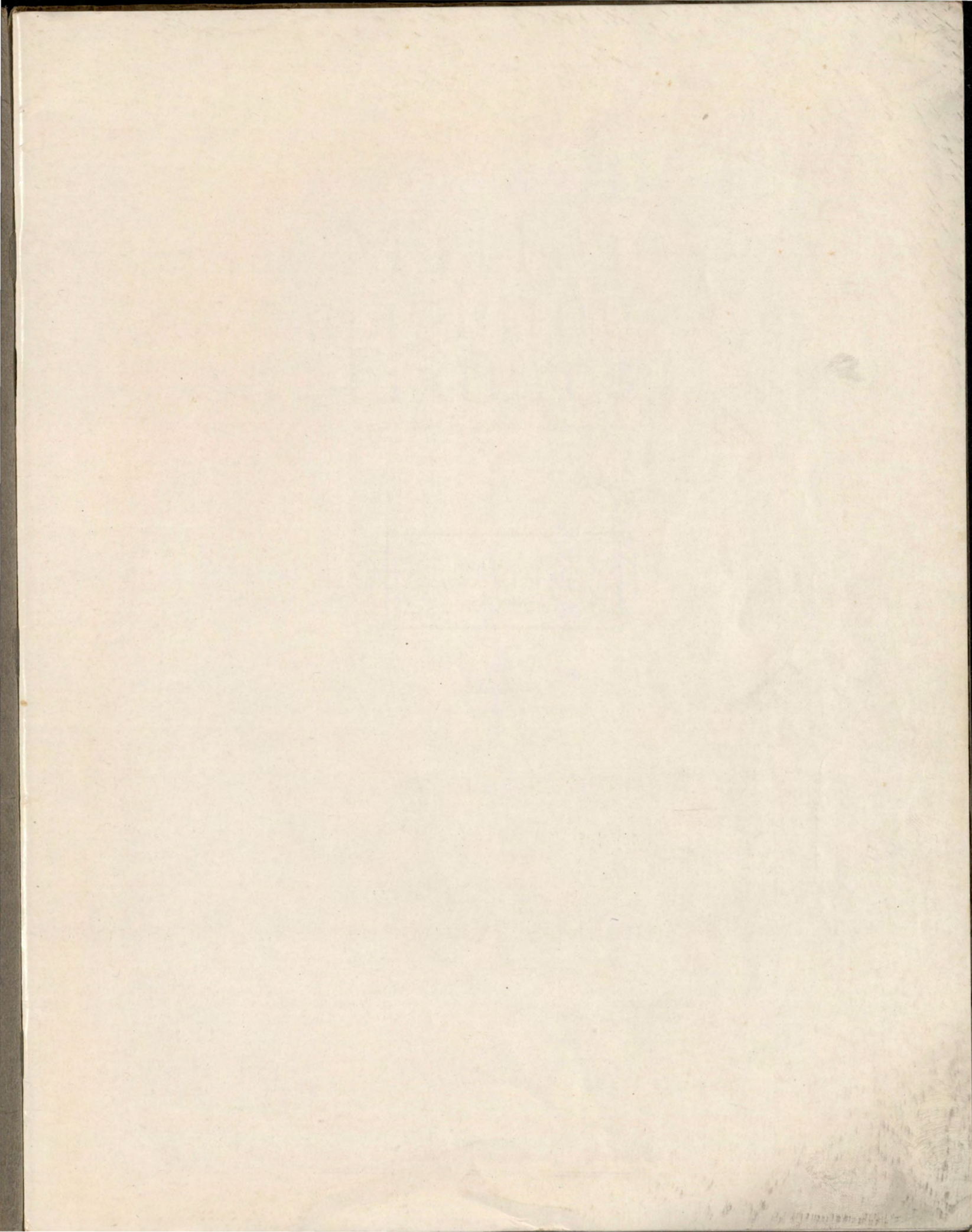


Miller Lighting Fixtures



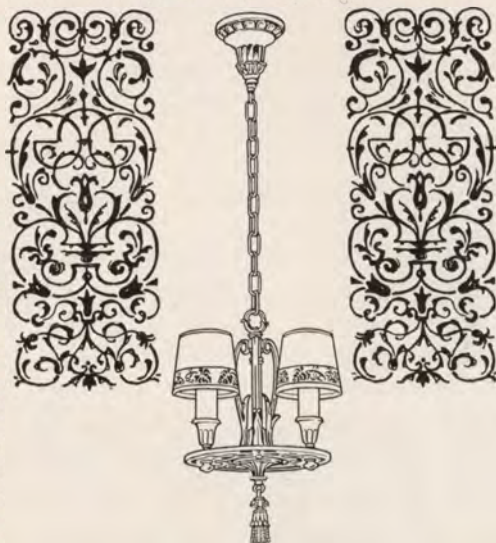
Catalog No. 160





Copyright 1927
By THE MILLER COMPANY
Meriden, Conn.

Miller Lighting Fixtures



Catalog No. 160

THE MILLER COMPANY

Meriden, Conn.

NEW YORK
68-70 PARK PLACE

CHICAGO
190 NORTH STATE STREET

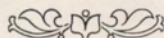
PHILADELPHIA
16TH AND CHESTNUT STREETS

ENGLAND
30-35 DRURY LANE
KINGSWAY, LONDON, W. C. 2

ATLANTA
123 SPRING STREET

PRINTED IN U. S. A.

The Essentials of Correct Home Lighting



IT IS not our intention here to suggest in detail just how any particular home should be lighted. Individual likes and dislikes—will and should—govern the final selection of equipment. Rather, we shall offer our interpretation of the basic principles, the essentials, that should guide the fixture dealer and the fixture buyer, if the one is to continue to be prosperous and the other is to be satisfied with his lighting fixtures for any length of time.

FIRST of all, lighting fixtures should be attractive. They should be of good design, pleasing lines, harmonious proportions. They should enhance the appearance of the room, should be infinitely more attractive installed than they appeared to be in the catalog or were in the dealer's store.

THEN they should be so constructed that they provide satisfactory illumination. Use plenty of well-shaded light, is the simple but classic recipe. Use bulbs of sufficient wattage to furnish an abundance of useful light, and cover them with shades to secure diffusion and direction and to prevent harmful, annoying glare. The era of unshaded light sources is on the wane.

FINALLY comes the story of quality which must always be relative. Mechanical construction should be considered, but more important is the kind of metal that goes into the fixture, and most important of all is the finish that makes the merchandise beautiful and appropriate—and permanent. When we consider that the average life of a residential lighting fixture is at least five years, the story of quality becomes most important. At the end of that period, the fixture should continue to be a source of pride for the owner or user.

The Name MILLER Means Much

SINCE 1844 The Miller Company has been manufacturing lighting equipment. Three-quarters of a century and more is quite long enough to add prestige to a manufacturer's name.

THE Miller lighting fixtures displayed on the following pages are the finest we have ever offered. They are designed to appeal to the greatest number of people—with a wide range in appearance and price. They are equipped with glass shades designed for The Miller Company by its Ivanhoe Division to fit and harmonize with each fixture as well as to assure a correct lighting job, when bulbs of sufficient wattage are used. Finally they are made by one of the most discriminating fixture manufacturers in America, one long-famous for fine finishes and whose name is synonymous with Quality.

MILLER fixtures are better fixtures, in appearance, in the kind and amount of useful light delivered, in that quality that prompts pride in ownership. They represent the ultimate in value. The Name Miller Means Much.



The SEVILLE *Line*



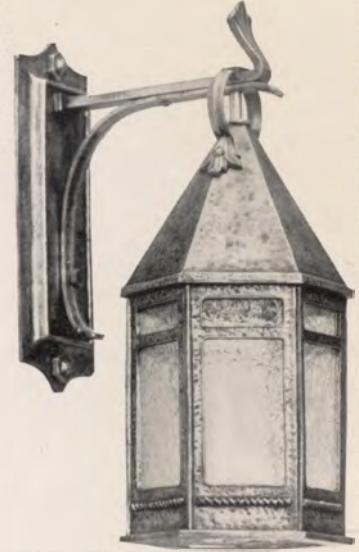
Many years ago in Spain artists wrought metal into candlesticks, candelabra and lanterns. The beauty of their craftsmanship lives again today in the antique hammered metal effects shown on the following pages.

MILLER

The
SEVILLE
Line



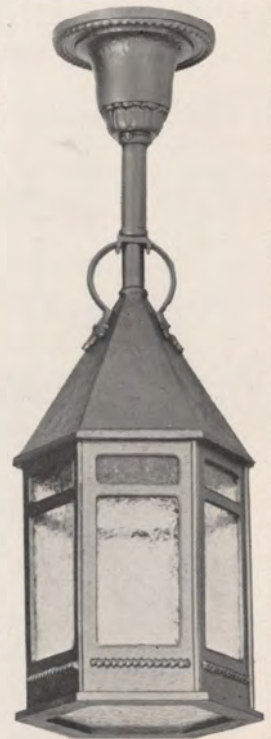
Fixture: No. 611
Length: 22 inches
Diameter of Lantern: 7 inches
Finish: Swedish Iron
Antique Hammered Copper
Crackled glass panels and bottom
*May be used with 40 to 100 watt
Mazda lamps*



Bracket Lantern: No. 636
Projection: 8½ inches
Length: 16 inches
Diameter of Lantern: 7 inches
Finish: Antique Hammered Copper
Swedish Iron
Crackled glass panels and bottom
*May be used with 40 to 100 watt
Mazda lamps*



Bracket Lantern: No. 610
Projection: 8½ inches
Length: 16 inches
Diameter of Lantern: 7 inches
Finish: Swedish Iron
Antique Hammered Copper
Crackled glass panels and bottom
*May be used with 40 to 100 watt
Mazda lamps*



Fixture: No. 648
Length: 21 inches
Diameter of Lantern: 7 inches
Finish: Swedish Iron
Antique Hammered Copper
Crackled glass panels and bottom
*May be used with 40 to 100 watt
Mazda lamps*

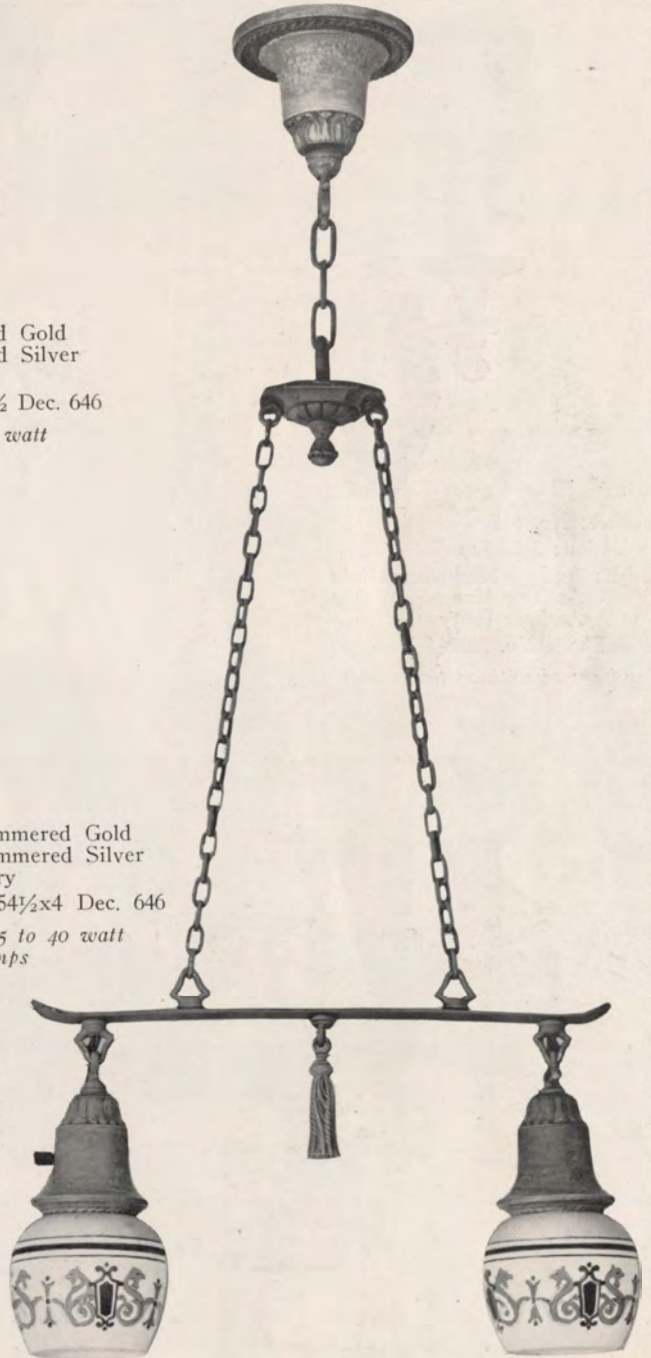


Fixture: No. 613
Length: 36 inches
Finish: Antique Hammered Gold
Antique Hammered Silver
May be used with 25 to 50 watt
Mazda lamps



Fixture: No. 612
Length: 7½ inches
Finish: Antique Hammered Gold
Antique Hammered Silver
Antique Ivory
Glass Shade No. 5454½x4½ Dec. 646
May be used with 25 to 50 watt
Mazda lamps

Fixture: No. 615
Length: 36 inches
Spread: 12 inches
Finish: Antique Hammered Gold
Antique Hammered Silver
Antique Ivory
Glass Shade No. 5454½x4 Dec. 646
May be used with 25 to 40 watt
Mazda lamps



MILLER

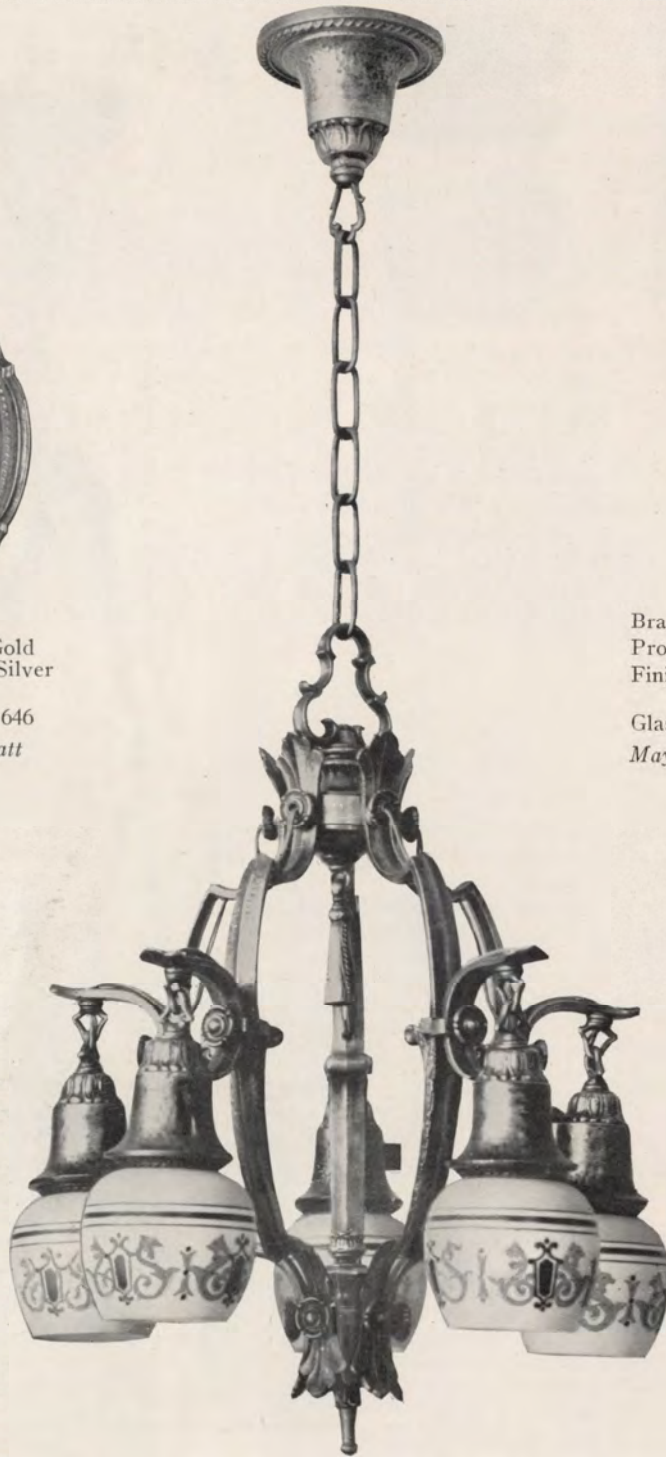
The
SEVILLE
Line



Bracket: No. 617
Projection: 3 inches
Finish: Antique Hammered Gold
Antique Hammered Silver
Antique Ivory
Glass Shade No. 5672½ Dec. 646
*May be used with 25 to 40 watt
Mazda lamps*



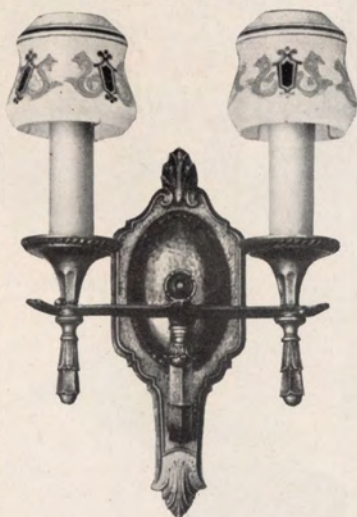
Bracket: No. 813
Projection: 3½ inches
Finish: Antique Hammered Gold
Antique Hammered Silver
Glass Shade No. 5672½ Dec. 646
*May be used with 25 to 40 watt
Mazda lamps*



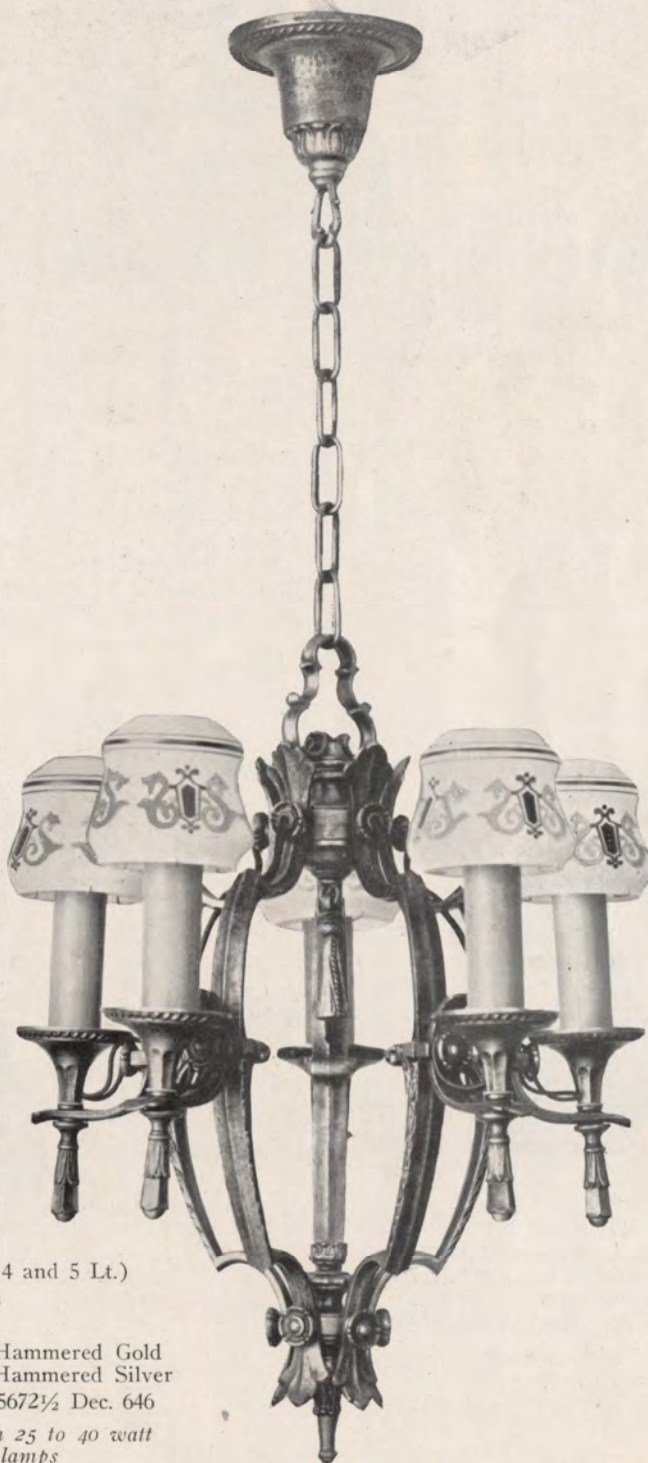
Fixture: No. 83 (4 and 5 Lt.)
Length: 36 inches
Spread: 13 inches
Finish: Antique Hammered Gold
Antique Hammered Silver
Glass Shade No. 5454½x4 Dec. 646
*May be used with 25 to 40 watt
Mazda lamps*

MILLER

The
SEVILLE
Line



Bracket: No. 814
Projection: $3\frac{1}{2}$ inches
Spread: $6\frac{3}{4}$ inches
Finish: Antique Hammered Gold
Antique Hammered Silver
Glass Shade No. 5672 $\frac{1}{2}$ Dec. 646
*May be used with 25 to 40 watt
Mazda lamps*



Fixture: No. 84 (4 and 5 Lt.)
Length: 48 inches
Spread: 13 inches
Finish: Antique Hammered Gold
Antique Hammered Silver
Glass Shade No. 5672 $\frac{1}{2}$ Dec. 646
*May be used with 25 to 40 watt
Mazda lamps*

MILLER

The
SEVILLE
Line



Fixture: No. 637 (4 and 5 Lt.)
Length: 9 inches
Diameter: 16 inches
Finish: Antique Hammered Gold
Antique Hammered Silver
Glass Shade No. 5454½x4 Dec. 646
*May be used with 25 to 40 watt
Mazda lamps*



Bracket: No. 616
Projection: 3½ inches
Finish: Antique Hammered Gold
Antique Hammered Silver
Antique Ivory
Glass Shade No. 5454½x4 Dec. 646
*May be used with 25 to 40 watt
Mazda lamps*



Fixture: No. 614
Length: 19 inches
Spread: 11 inches
Finish: Antique Hammered Gold
Antique Hammered Silver
Antique Ivory
Glass Shade No. 5454½x4 Dec. 646
*May be used with 25 to 40 watt
Mazda lamps*



The
GEORGIAN
Sine

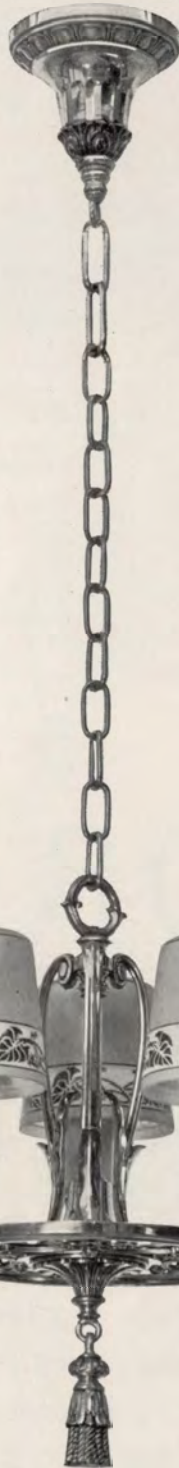


The dawn of the eighteenth century saw English craftsmen working metal into objects of distinctive and pleasing lines. The passing years seemed to enhance the beauty of their labour. The designs they created are suggested again on the following pages.

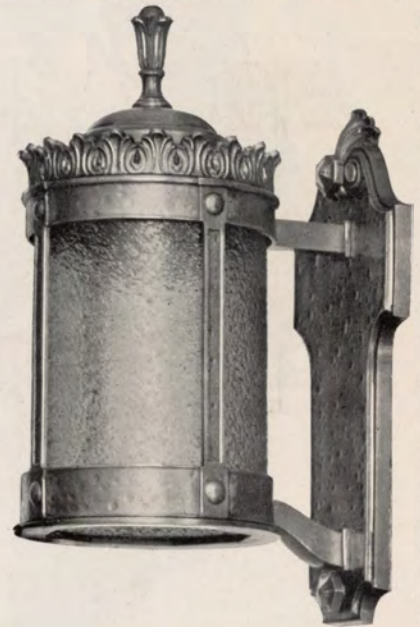
MILLER
The
 GEORGIAN
Line



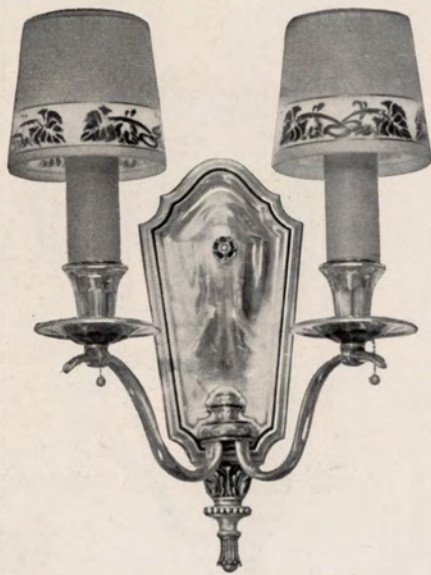
Fixture: No. 650
 Length: 19 inches
 Diameter of Lantern: 5½ inches
 Finish: Swedish Iron
 Antique Hammered Bronze
 Weathered Brass
 Light amber rippled glass panels and
 bottom
 May be used with 40 to 100 watt
 Mazda lamps



Fixture: No. 651
 Length: 36 inches
 Diameter: 9 inches
 Finish: Colonial Gold and Brown
 Weathered Brass
 Glass Shade No. 5502 C. R. 599
 May be used with 25 to 40 watt
 Mazda lamps



Bracket Lantern: No. 649
 Length: 13 inches
 Projection: 7 inches
 Diameter of Lantern: 5½ inches
 Finish: Swedish Iron
 Antique Hammered Bronze
 Light amber rippled glass panels and
 bottom
 May be used with 40 to 100 watt
 Mazda lamps

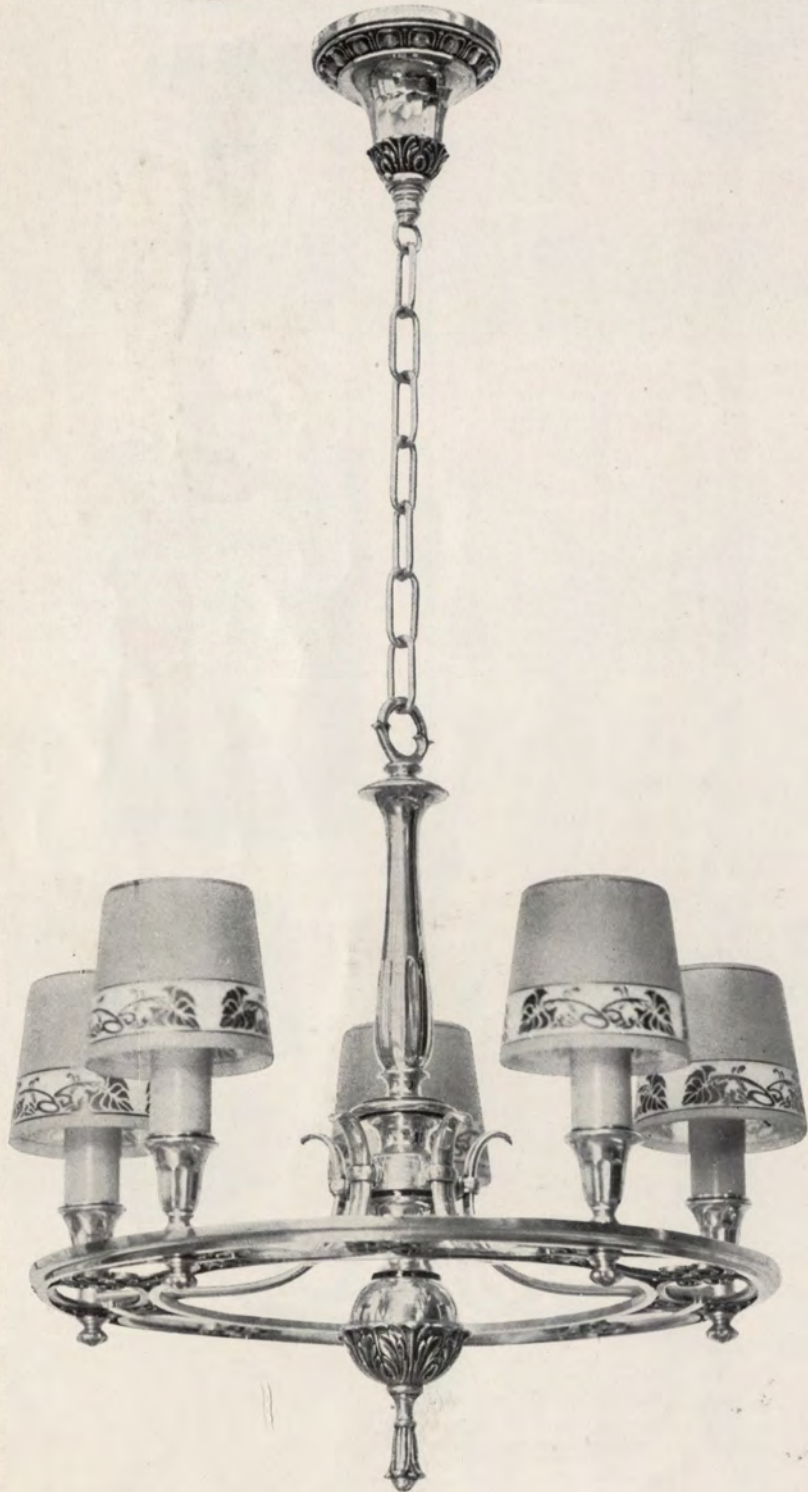


Bracket: No. 817
 Projection: 3½ inches
 Spread: 6½ inches
 Finish: Colonial Gold and Brown
 Weathered Brass
 Silver and Black
 Glass Shade No. 5502 C. R. 599
*May be used with 25 to 40 watt
 Mazda lamps*



Fixture: No. 87
 Length: 36 inches
 Spread: 15 inches
 Finish: Silver and Black
 Glass Shade No. 5502 C. R. 599
*May be used with 25 to 40
 watt Mazda lamps*

MILLER
The
 GEORGIAN
Line

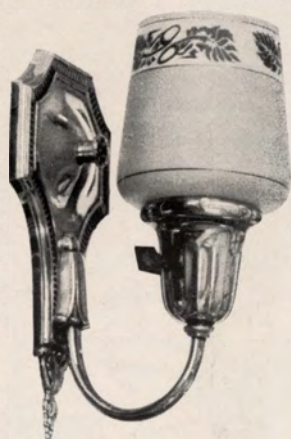


Fixture: No. 653
 Length: 36 inches
 Diameter: 17 inches
 Finish: Colonial Gold and Brown
 Weathered Brass
 Silver and Black
 Glass Shade No. 5502 C. R. 599
 May be used with 25 to 40 watt
 Mazda lamps



Bracket; No. 812
 Projection: 4½ inches
 Finish: Colonial Gold and Brown
 Weathered Brass
 Silver and Black
 Glass Shade No. 5502 C. R. 599
 May be used with 25 to 40 watt
 Mazda lamps

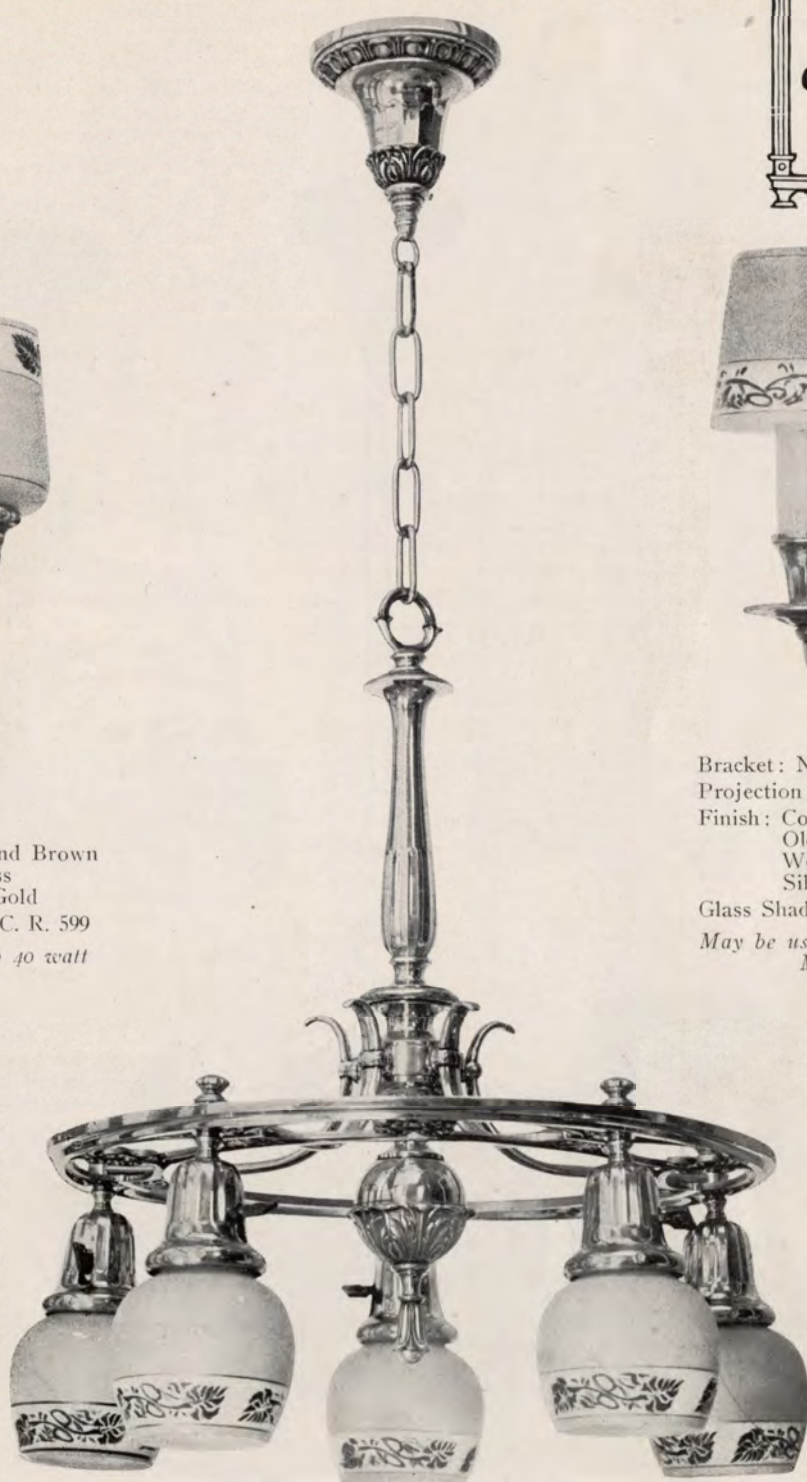
MILLER
The
 GEORGIAN
Line



Bracket: No. 668
 Projection: 3½ inches
 Finish: Colonial Gold and Brown
 Weathered Brass
 Old Ivory and Gold
 Glass Shade No. 5634½ C. R. 599
*May be used with 25 to 40 watt
 Mazda lamps*

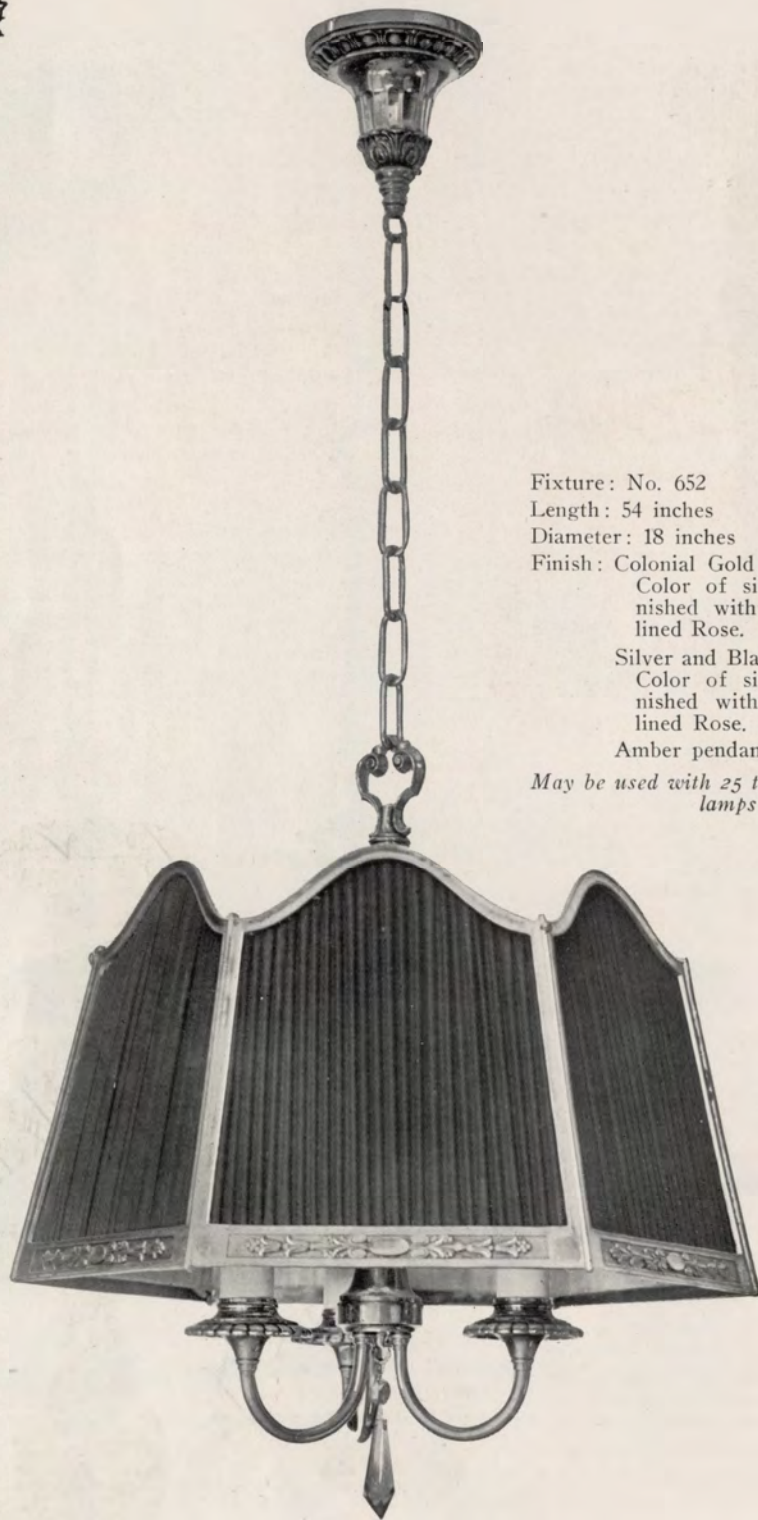


Bracket: No. 659
 Projection: 3½ inches
 Finish: Colonial Gold and Brown
 Old Ivory and Gold
 Weathered Brass
 Silver and Black
 Glass Shade No. 5502 C. R. 599
*May be used with 25 to 40 watt
 Mazda lamps*



Fixture: No. 654
 Length: 36 inches
 Diameter: 17 inches
 Finish: Colonial Gold and Brown
 Weathered Brass
 Glass Shade No. 5633½ C. R. 599
*May be used with 25 to 40 watt
 Mazda lamps*

MILLER
The
GEORGIAN
Line



Fixture: No. 652

Length: 54 inches

Diameter: 18 inches

Finish: Colonial Gold and Brown

Color of silk shade when furnished with this finish is Gold lined Rose.

Silver and Black

Color of silk shade when furnished with this finish is Tan lined Rose.

Amber pendant

May be used with 25 to 50 watt Mazda lamps

MILLER
The
 GEORGIAN
Line



Fixture: No. 656
 Length: 15 inches
 Diameter: 12 inches
 Finish: Colonial Gold and Brown
 Weathered Brass
 Glass Shade No. 5633½ C. R. 599
 May be used with 25 to 40 watt
 Mazda lamps

Fixture: No. 661
 Length: 12 inches
 Finish: Colonial Gold and Brown
 Weathered Brass
 Silver and Black

*May be used with 25 to 50 watt
 Mazda lamps*



Fixture: No. 655
 Length: 16 inches
 Diameter: 17 inches
 Finish: Colonial Gold and Brown
 Weathered Brass
 Glass Shade No. 5633½ C. R. 599
 May be used with 25 to 40 watt
 Mazda lamps

MILLER
The
 GEORGIAN
Line



Fixture: No. 664
 Length: 7 inches
 Diameter: 17 inches
 Finish: Colonial Gold and Brown
 Weathered Brass
 Glass Shade No. 5633½ C. R. 599
 May be used with 25 to 40 watt
 Mazda lamps

Parlor



Fixture: No. 665
 Length: 7 inches
 Diameter: 12 inches
 Finish: Colonial Gold and Brown
 Weathered Brass
 Glass Shade No. 5633½ C. R. 599
 May be used with 25 to 40 watt
 Mazda lamps



Fixture: No. 657
 Length: 7 inches
 Diameter: 9 inches
 Finish: Colonial Gold and Brown
 Weathered Brass
 Old Ivory and Gold
 Glass Shade No. 5634½ C. R. 599
 May be used with 25 to 40 watt
 Mazda lamps



The English Line



Early in the seventeenth century, English Craftsmen created ornaments of metal to represent the pomp and splendor of that period of chivalry and romance. That beauty of design is again apparent in the offerings on the following pages.

MILLER
The
English
Line



Bracket Lantern: No. 694
Projection: 9 $\frac{1}{4}$ inches
Length: 16 inches
Diameter: 7 inches
Finish: Swedish Iron
Antique Hammered Bronze
Light amber rippled glass panels
and bottom
*May be used with 40 to 100 watt
Mazda lamps*

Fixture: No. 693
Length: 19 inches
Diameter: 7 inches
Finish: Swedish Iron
Antique Hammered Bronze
Light amber rippled glass panels
and bottom
*May be used with 40 to 100 watt
Mazda lamps*



MILLER
The
English
Line



Fixture: No. 698
Length: 14 inches
Finish: Swedish Iron and Gold
Rusty Iron and Gold
Glass Shade No. 5454½x4½ Dec. 647
*May be used with 25 to 50 watt
Mazda lamps*

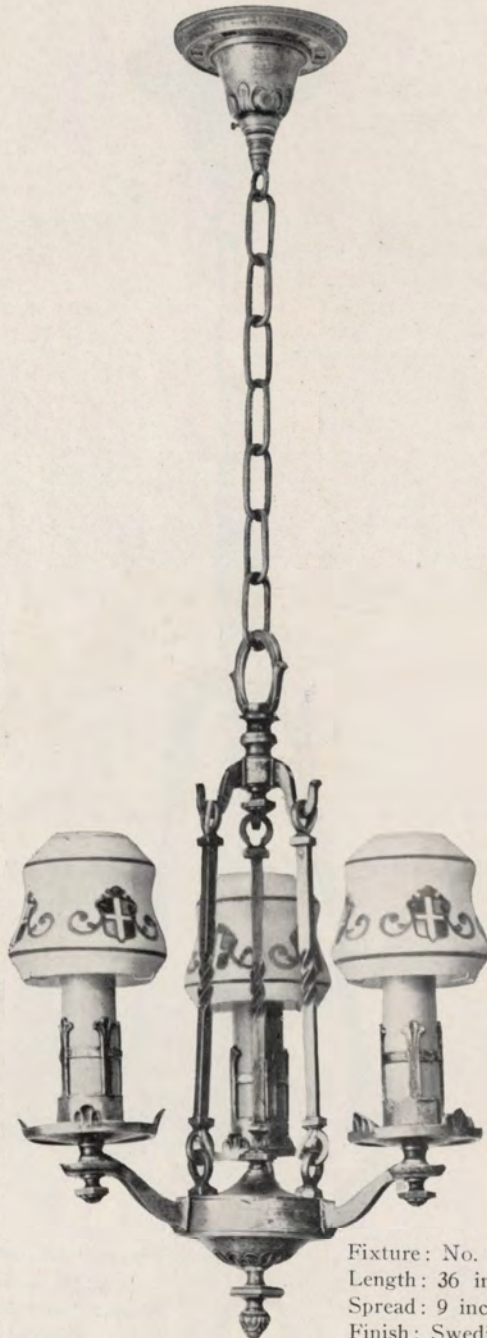


Fixture: No. 695
Length: 36 inches
Finish: Swedish Iron and Gold
Rusty Iron and Gold
*May be used with 25 to 50 watt
Mazda lamps*



Fixture: No. 612
Length: 7½ inches
Finish: Swedish Iron and Gold
Rusty Iron and Gold
Glass Shade No. 5454½x4½ Dec. 647
*May be used with 25 to 50 watt
Mazda lamps*

MILLER
The
English
Line



Fixture: No. 696
Length: 36 inches
Spread: 9 inches
Finish: Swedish Iron and Gold
Rusty Iron and Gold
Glass Shade No. 5672½ Dec. 647
*May be used with 25 to 40 watt
Mazda lamps*



Bracket: No. 699
 Projection: 3 inches
 Finish: Swedish Iron and Gold
 Rusty Iron and Gold
 Glass Shade No. 5672½ Dec. 647
*May be used with 25 to 40 watt
 Mazda lamps*



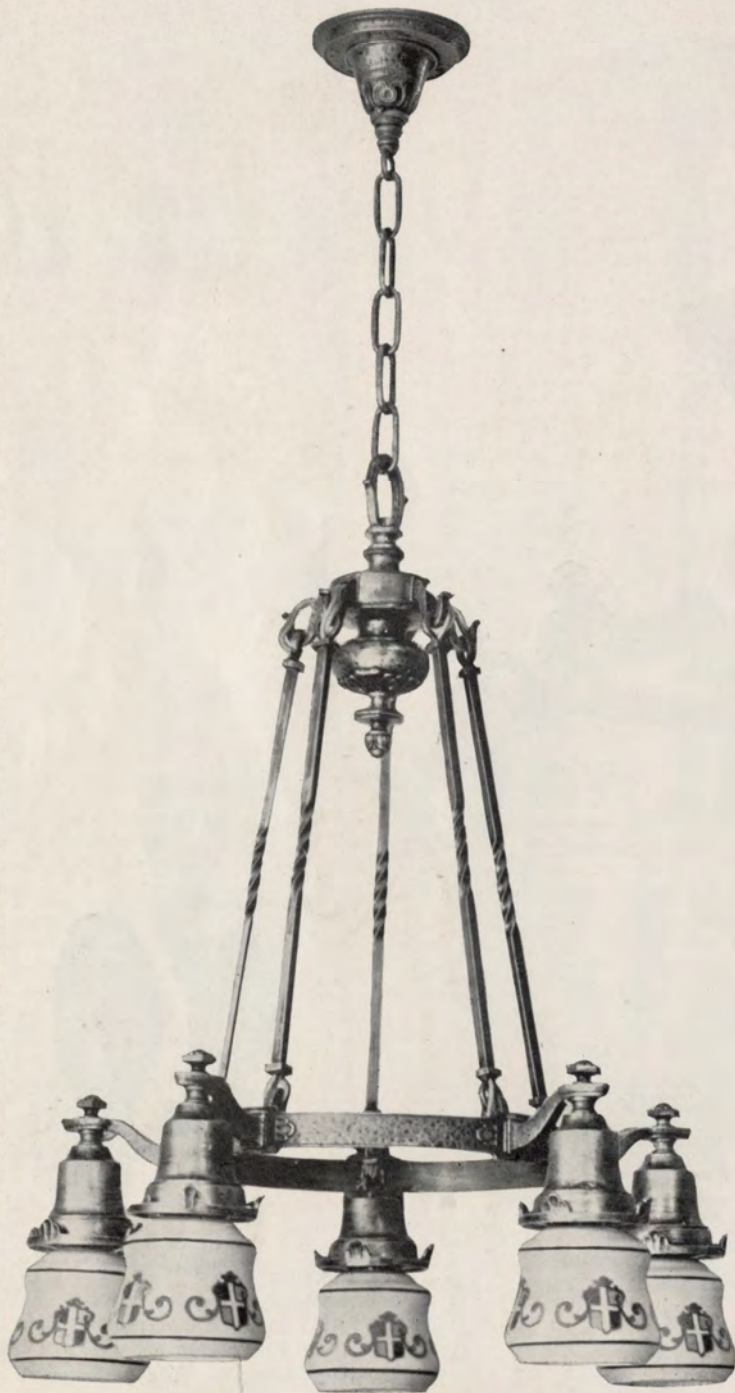
Fixture: No. 89
 Length: 16 inches
 Spread: 16 inches
 Finish: Swedish Iron and Gold
 Rusty Iron and Gold
 Glass Shade No. 5671½ Dec. 647
*May be used with 25 to 40 watt
 Mazda lamps*



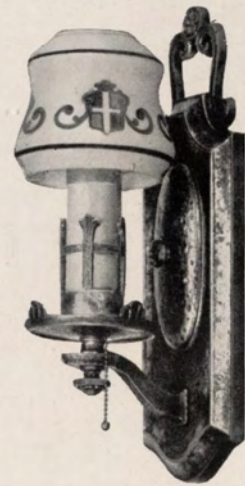
Bracket: No. 703
 Projection: 3 inches
 Finish: Swedish Iron and Gold
 Rusty Iron and Gold
 Glass Shade No. 5670½ Dec. 647
*May be used with 25 to 40 watt
 Mazda lamps*

MILLER

The
English
Line

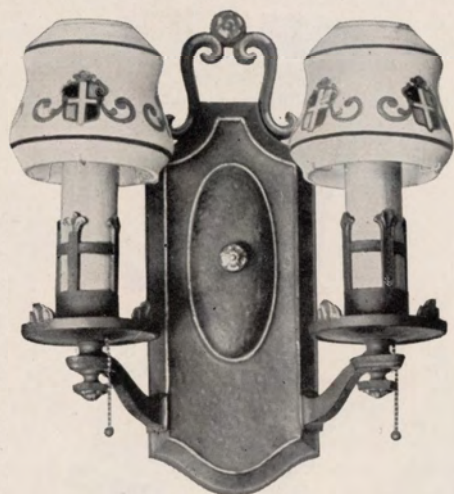


Fixture: No. 90
Length: 36 inches
Spread: 16 inches
Finish: Swedish Iron and Gold
Rusty Iron and Gold
Glass Shade No. 5671½ Dec. 647
*May be used with 25 to 40 watt
Mazda lamps*

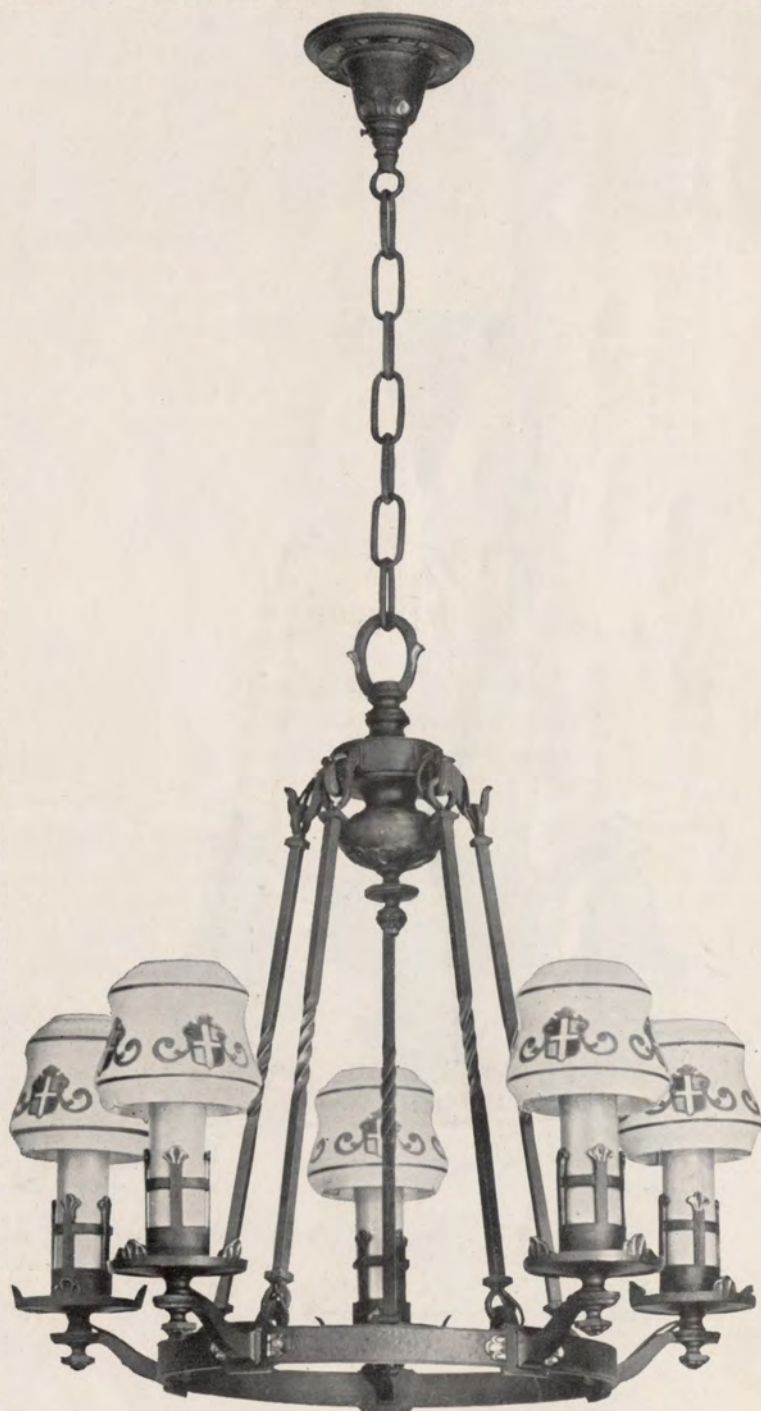


Bracket: No. 819
Projection: 3 inches
Finish: Swedish Iron and Gold
Rusty Iron and Gold
Glass Shade No. 5672½ Dec. 647
*May be used with 25 to 40 watt
Mazda lamps*

MILLER
*The
 English
 line*



Bracket: No. 818
 Projection: 2½ inches
 Spread: 7 inches
 Finish: Swedish Iron and Gold
 Rusty Iron and Gold
 Glass Shade No. 5672½ Dec. 647
*May be used with 25 to 40 watt
 Mazda lamps*



Fixture: No. 88
 Length: 46 inches
 Spread: 16 inches
 Finish: Swedish Iron and Gold
 Rusty Iron and Gold
 Glass Shade No. 5672½ Dec. 647
*May be used with 25 to 40 watt
 Mazda lamps*

MILLER

The
English
Line



Fixture: No. 701
Length: 20 inches
Spread: 10 inches
Finish: Antique Ivory and Polychrome
Rusty Iron and Polychrome
Glass Shade No. 5671½ Dec. 649
May be used with 25 to 40 watt Mazda
lamps

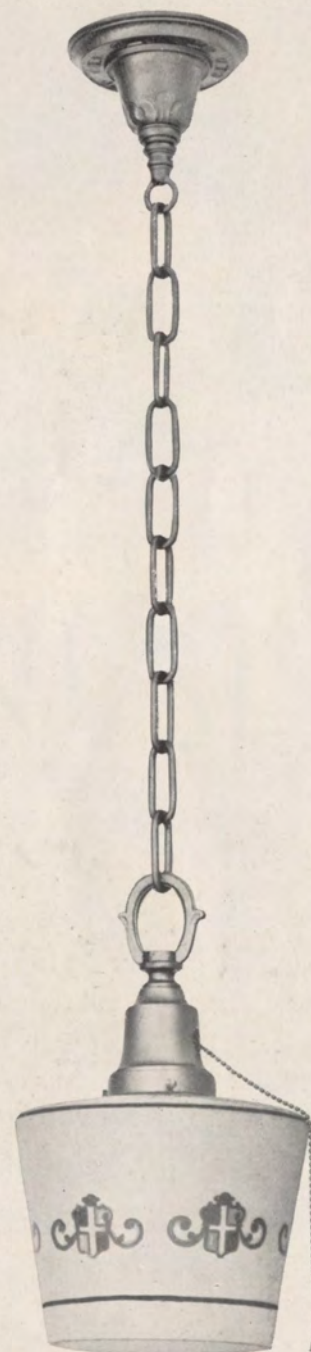


Bracket: No. 702
Projection: 3¼ inches
Finish: Antique Ivory and Polychrome
Rusty Iron and Polychrome
Glass Shade No. 5672½ Dec. 649
May be used with 25 to 40 watt Mazda
lamps

MILLER
*The
English
Line*



Fixture: No. 697
Length: 16 inches
Spread: 8 inches
Finish: Rusty Iron and Gold
Swedish Iron and Gold
Glass Shade No. 5671½ Dec. 647
*May be used with 25 to 40 watt
Mazda lamps*



Fixture: No. 736
Length: 36 inches
Finish: Rusty Iron and Gold
Swedish Iron and Gold
Glass Shade No. 5500X7 Dec. 647
*May be used with 40 to 100 watt
Mazda lamps*

MILLER
The
English
Line



Fixture: No. 728
Length: 36 inches
Diameter: 16 inches
Finish: Antique Ivory and Polychrome
Rusty Iron and Polychrome
Light amber rippled glass panels and
bottom
May be used with 25 to 50 watt Mazda
lamps



The
Early COLONIAL
Line



Out of the hardships and toil that were part of Colonial America came a most distinctive art, one characterized by extreme simplicity in line and body. The offerings on the following pages reflect that delightful quality.

MILLER
The
 Early Colonial
Line



Fixture: No. 322
 Length: 12 inches
 Finish: Early Colonial Brass
 Early Colonial Silver
 Glass Shade No. 2351½ x 5" Dec. 702
*May be used with 25 to 60 watt
 Mazda lamps*



Fixture: No. 323
 Length: 36 inches
 Finish: Early Colonial Brass
 Early Colonial Silver
 Globe No. 5376—7" x 7½" Dec. 702
*May be used with 25 to 60 watt
 Mazda lamps*



Fixture: No. 324
 Length: 24 inches
 Finish: Early Colonial Brass
 Early Colonial Silver
 Globe No. 5376—7" x 7½" Dec. 702
*May be used with 25 to 60 watt
 Mazda lamps*

MILLER

The
Early Colonial
Line



Fixture: No. 331
Length: 6¼ inches
Diameter: 14¾ inches
Finish: Early Colonial Brass
Early Colonial Silver
Glass Shade No. 2352½ Dec. 702
*May be used with 25 to 40 watt
Mazda lamps*



Fixture: No. 313
Length: 16 inches
Spread: 8 inches
Finish: Early Colonial Brass
Early Colonial Silver
Glass Shade No. 2352½ Dec. 702
*May be used with 25 to 40 watt
Mazda lamps*



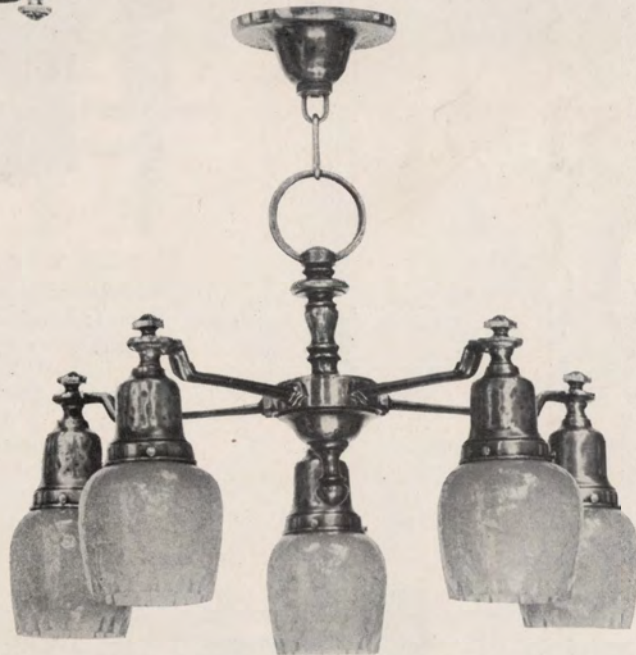
Fixture: No. 317
Length: 6½ inches
Diameter: 9¾ inches
Finish: Early Colonial Brass
Early Colonial Silver
Old Ivory
Glass Shade No. 2352½ Dec. 702
*May be used with 25 to 40 watt
Mazda lamps*

MILLER
The
Early Colonial
Line

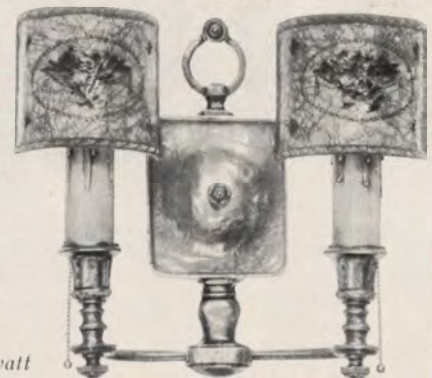


out.

Bracket: No. 309
Projection: 3 inches
Spread: 6¾ inches
Finish: Early Colonial Brass
Early Colonial Silver
Glass Shade No. 2352½ Dec. 702
*May be used with 25 to 40 watt
Mazda lamps*

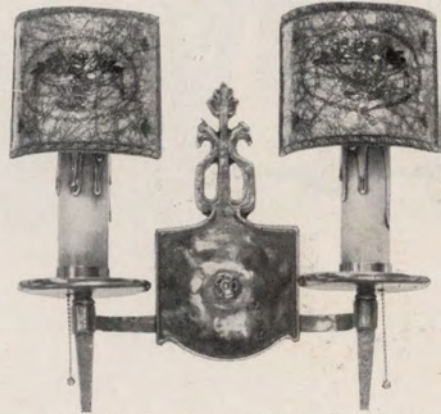
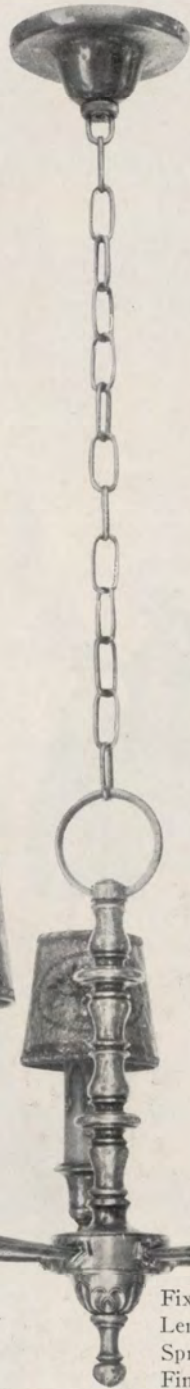


Fixture: No. 319
Length: 15 inches
Spread: 15 inches
Finish: Early Colonial Brass
Early Colonial Silver
Glass Shade No. 2352½ Dec. 702
*May be used with 25 to 40 watt
Mazda lamps*



Bracket: No. 308
Projection: 3 inches
Spread: 6¾ inches
Finish: Early Colonial Brass
Early Colonial Silver
Parchment Shield No. 5258
*May be used with 25 to 40 watt
Mazda lamps*

MILLER
The
 Early Colonial
Line

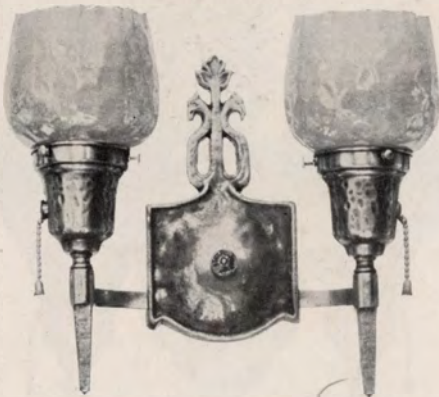


Bracket: No. 304
 Projection: 3 inches
 Spread: 7 inches
 Finish: Early Colonial Brass
 Early Colonial Silver
 Parchment Shield No. 5258
*May be used with 25 to 40 watt
 Mazda lamps*



Fixture: No. 318
 Length: 48 inches
 Spread: 14¾ inches
 Finish: Early Colonial Brass
 Early Colonial Silver
 Parchment Shade No. 5257
*May be used with 25 to 40 watt
 Mazda lamps*

MILLER
The
Early Colonial
Line

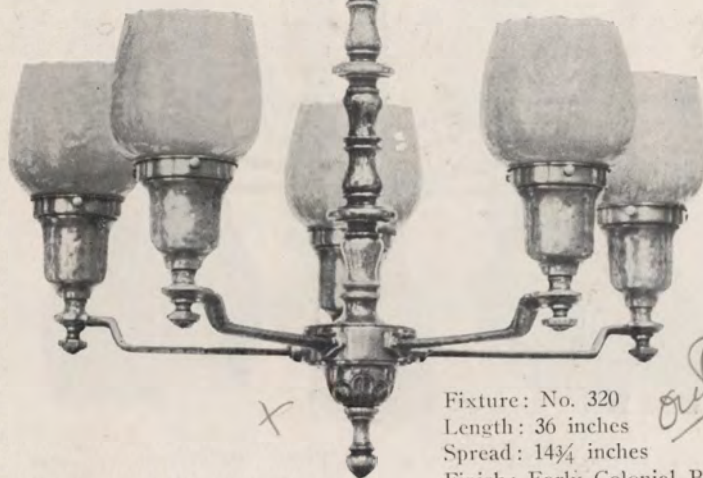
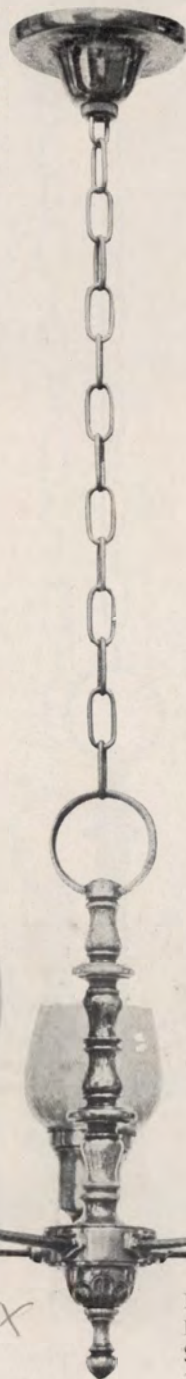


Bracket: No. 305
Projection: 3 inches
Spread: 7 inches
Finish: Early Colonial Brass
Early Colonial Silver
Glass Shade No. 2352½ Dec. 702
May be used with 25 to 40 watt
Mazda lamps

out



Bracket: No. 301
Projection: 3 inches
Finish: Early Colonial Brass
Early Colonial Silver
Old Ivory
Glass Shade No. 2352½ Dec. 702
May be used with 25 to 40 watt
Mazda lamps



Fixture: No. 320
Length: 36 inches
Spread: 14¾ inches
Finish: Early Colonial Brass
Early Colonial Silver
Glass Shade No. 2352½ Dec. 702
May be used with 25 to 40 watt
Mazda lamps

X

out

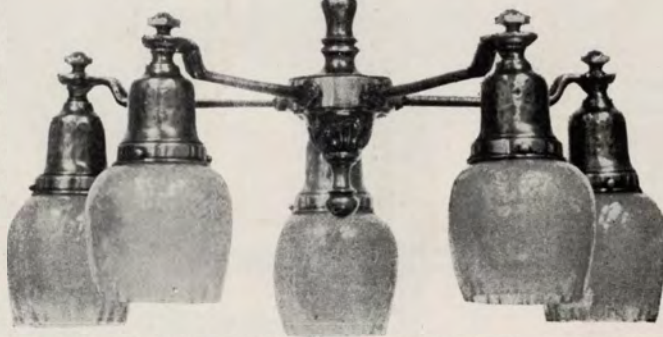
MILLER
The
Early Colonial
Line



out
Bracket: No. 340
Projection: 3½ inches
Finish: Early Colonial Brass
Early Colonial Silver
Glass shade No. 2352½ Dec. 702
May be used with 25 to 40 watt
Mazda lamps

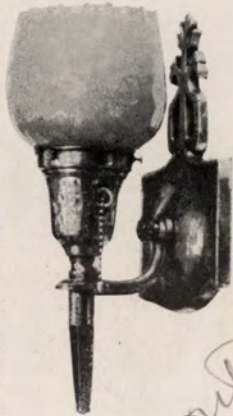


Bracket: No. 311
Projection: 3 inches
Spread: 6¾ inches
Finish: Early Colonial Brass
Early Colonial Silver
Glass Shade No. 2352½ Dec. 702
out
May be used with 25 to 40 watt
Mazda lamps



Fixture: No. 321
Length: 36 inches
Spread: 14¾ inches
Finish: Early Colonial Brass
Early Colonial Silver
Glass Shade No. 2352½ Dec. 702
May be used with 25 to 40 watt
Mazda lamps

MILLER
The
Early Colonial
Line



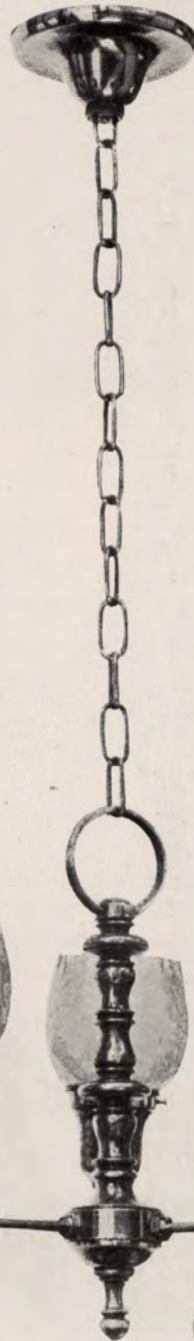
Bracket: No. 334
Projection: 3½ inches
Finish: Early Colonial Brass
Early Colonial Silver
Glass Shade No. 2352½ Dec. 702
May be used with 25 to 40 watt
Mazda lamps

out



Bracket: No. 307
Projection: 3 inches
Spread: 7 inches
Finish: Early Colonial Brass
Early Colonial Silver
Glass Shade No. 2352½ Dec. 702
May be used with 25 to 40 watt
Mazda lamps

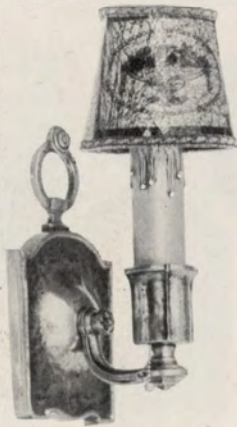
out



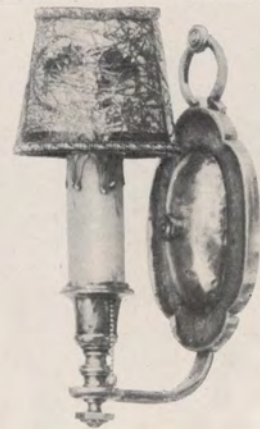
out

Fixture: No. 315
Length: 36 inches
Spread: 10½ inches
Finish: Early Colonial Brass
Early Colonial Silver
Glass Shade No. 2352½ Dec. 702
May be used with 25 to 40 watt
Mazda lamps

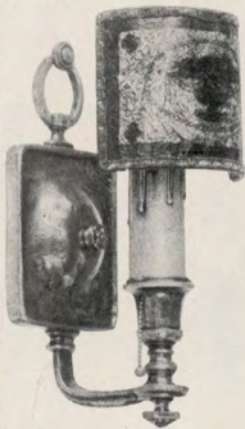
MILLER
The
Early Colonial
Line



Bracket: No. 335
Projection: 3½ inches
Finish: Early Colonial Brass
Early Colonial Silver
Parchment Shade No. 5257
*May be used with 25 to 40 watt
Mazda lamps*



Bracket: No. 339
Projection: 3½ inches
Finish: Early Colonial Brass
Early Colonial Silver
Parchment Shade No. 5257
*May be used with 25 to 40 watt
Mazda lamps*

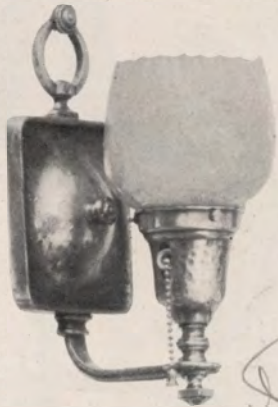


Bracket: No. 337
Projection: 3½ inches
Finish: Early Colonial Brass
Early Colonial Silver
Parchment Shield No. 5258
*May be used with 25 to 40 watt
Mazda lamps*



Bracket: No. 333
Projection: 3½ inches
Finish: Early Colonial Brass
Early Colonial Silver
Parchment Shield No. 5258
*May be used with 25 to 40 watt
Mazda lamps*

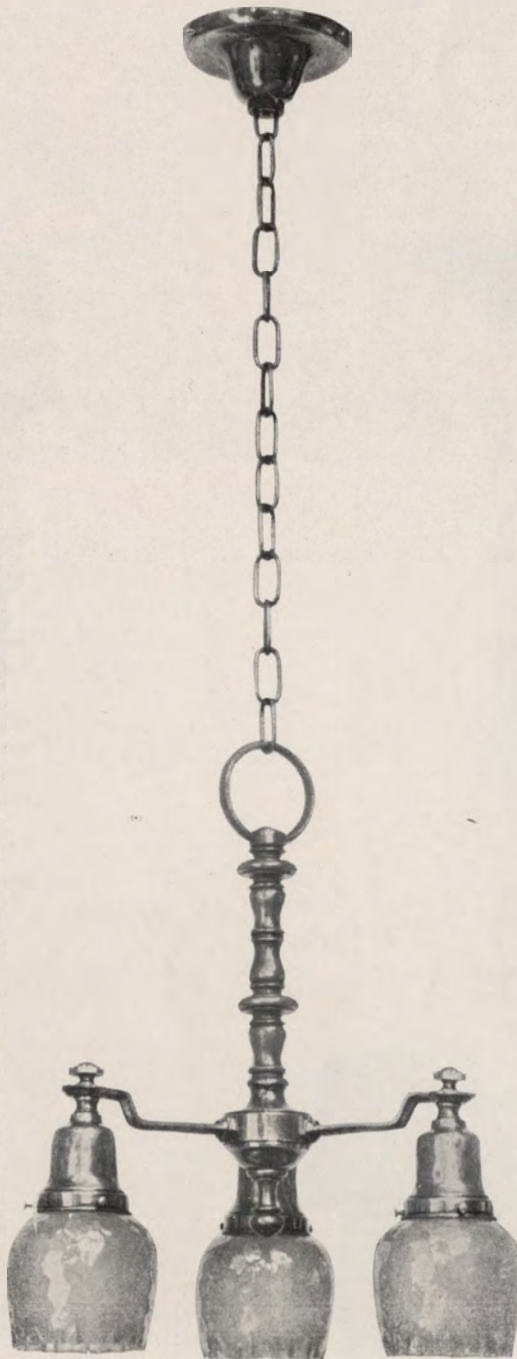
MILLER
The
Early Colonial
Line



Bracket: No. 338
Projection: 3½ inches
Finish: Early Colonial Brass
Early Colonial Silver
Glass Shade No. 2352½ Dec. 702
*May be used with 25 to 40 watt
Mazda lamps*

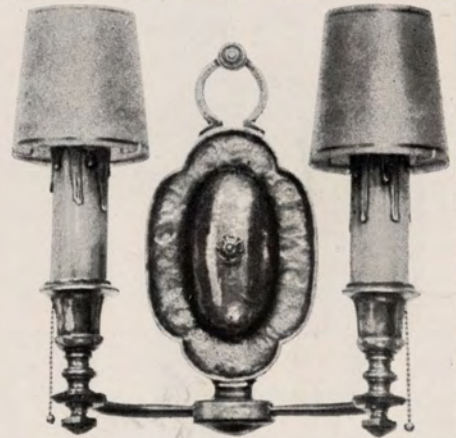
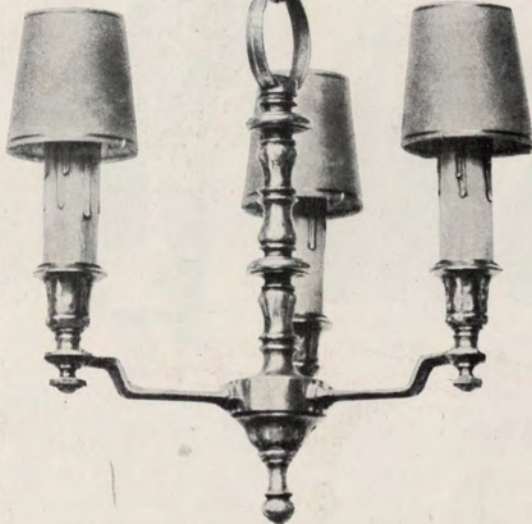


out
Bracket: No. 336
Projection: 3½ inches
Finish: Early Colonial Brass
Early Colonial Silver
Glass Shade No. 2352½ Dec. 702
*May be used with 25 to 40 watt
Mazda lamps*



Fixture: No. 316
Length: 36 inches
Spread: 10½ inches
Finish: Early Colonial Brass
Early Colonial Silver
Glass Shade No. 2352½ Dec. 702
*May be used with 25 to 40 watt
Mazda lamps*

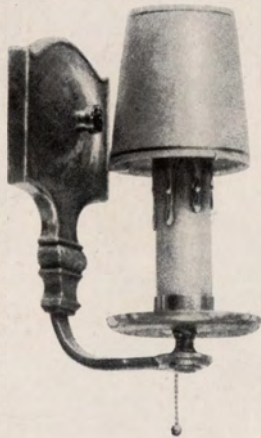
MILLER
The
 Early Colonial
Line



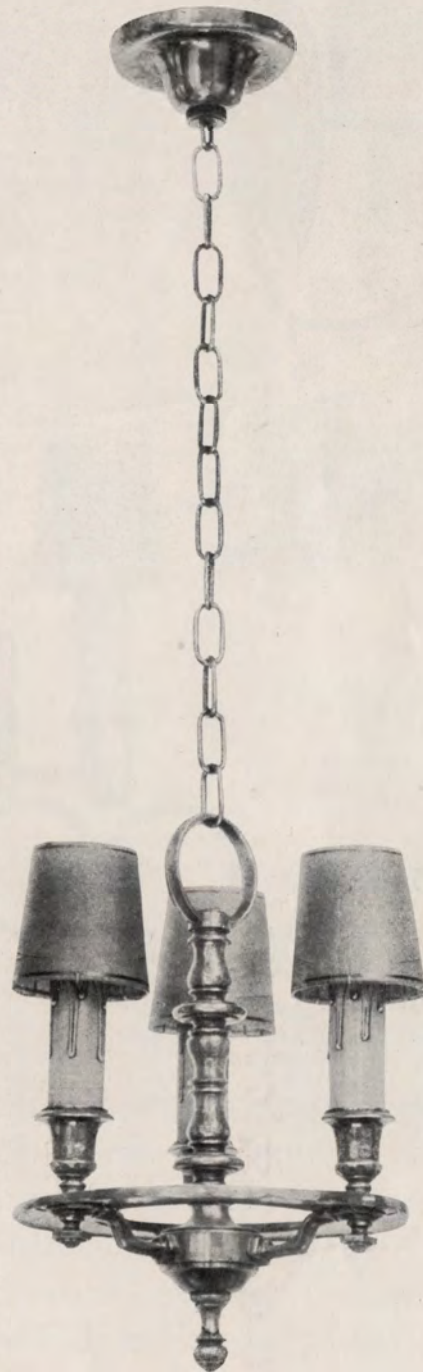
Bracket: No. 310
 Projection: 3 inches
 Spread: 6¾ inches
 Finish: Early Colonial Brass
 Early Colonial Silver
 Glass Shade No. 5245½ Dec. 409
*May be used with 25 to 40 watt
 Mazda lamps*

Fixture: No. 314
 Length: 36 inches
 Spread: 10¼ inches
 Finish: Early Colonial Brass
 Early Colonial Silver
 Glass Shade No. 5245½ Dec. 409
*May be used with 25 to 40 watt
 Mazda lamps*

MILLER
The
Early Colonial
Line

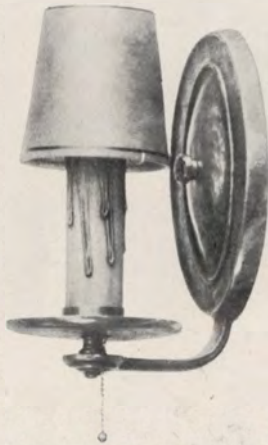


Bracket: No. 302
Projection: 3 inches
Finish: Early Colonial Brass
Early Colonial Silver
Glass Shade No. 5245½ Dec. 409
*May be used with 25 to 40 watt
Mazda lamps*

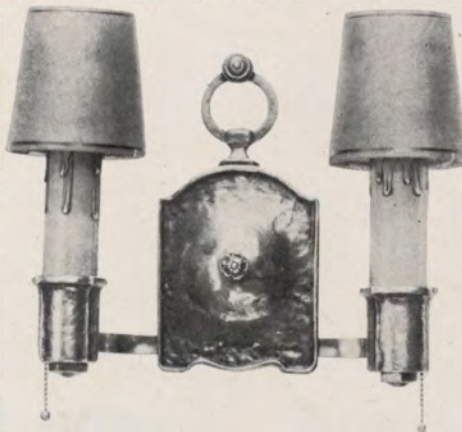


Fixture: No. 325
Length: 36 inches
Spread: 7¾ inches
Finish: Early Colonial Brass
Early Colonial Silver
Glass Shade No. 5245½ Dec. 409
*May be used with 25 to 40 watt
Mazda lamps*

MILLER
The
 Early Colonial
Line



Bracket: No. 303
 Projection: 3 inches
 Finish: Early Colonial Brass
 Early Colonial Silver
 Glass Shade No. 5245½ Dec. 409
*May be used with 25 to 40 watt
 Mazda lamps*



Bracket: No. 306
 Projection: 3 inches
 Spread: 7 inches
 Finish: Early Colonial Brass
 Early Colonial Silver
 Glass Shade No. 5245½ Dec. 409
*May be used with 25 to 40 watt
 Mazda lamps*



Bracket: No. 300
 Projection: 3 inches
 Finish: Early Colonial Brass
 Early Colonial Silver
 Old Ivory
 Parchment Shield No. 5258
*May be used with 25 to 40 watt
 Mazda lamps*



The 400 Line



Typical of most American cities today is the semi-standardized house and apartment. The first cost of equipment too often is the only consideration. Where the means are limited, one may wisely and well select from the following pages.

MILLER

The
400
Line



Fixture: No. 424
Length: 10¼ inches
Finish: Black Iron
Verde Antique
Globe No. 5727 7" Amber
tinted Crackled glass
*May be used with 25 to
60 watt Mazda lamps*



Fixture: No. 411
Length: 36 inches
Finish: Antique Hammered Gold
Antique Silver
Globe No. 5727 7" Amber
tinted Crackled glass
*May be used with 25 to 60 watt
Mazda lamps*



Bracket Lantern: No. 423
Projection: 6½ inches
Finish: Black Iron
Verde Antique
Globe No. 5727 7" Amber
tinted Crackled glass
*May be used with 25 to
60 watt Mazda lamps*

MILLER

The
400
Line



Fixture: No. 412
Length: 7 inches
Finish: Antique Hammered Gold
Antique Silver
Old Ivory and Gold
Glass Shade No. 5670½ C. R. 650
*May be used with 25 to 40 watt
Mazda lamps*



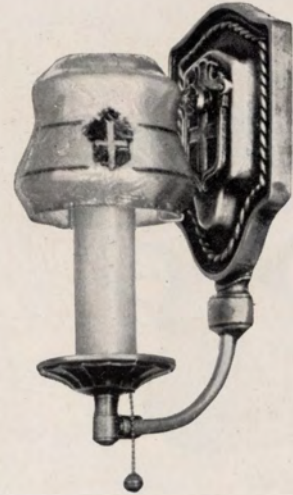
Fixture: No. 410
Length: 36 inches
Finish: Antique Hammered Gold
Antique Silver
No. 5153 6x8" Amber tinted
Crackled glass cylinder
*May be used with 40 to 100 watt
Mazda lamps*



Fixture: No. 415
Length: 12½ inches
Spread: 9 inches
Finish: Antique Hammered Gold
Antique Silver
Old Ivory and Gold
Glass Shade No. 5671½ C. R. 650
*May be used with 25 to 40 watt
Mazda lamps*

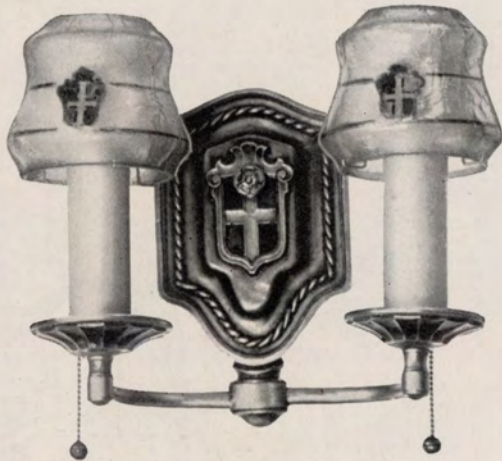
MILLER

The
400
Line

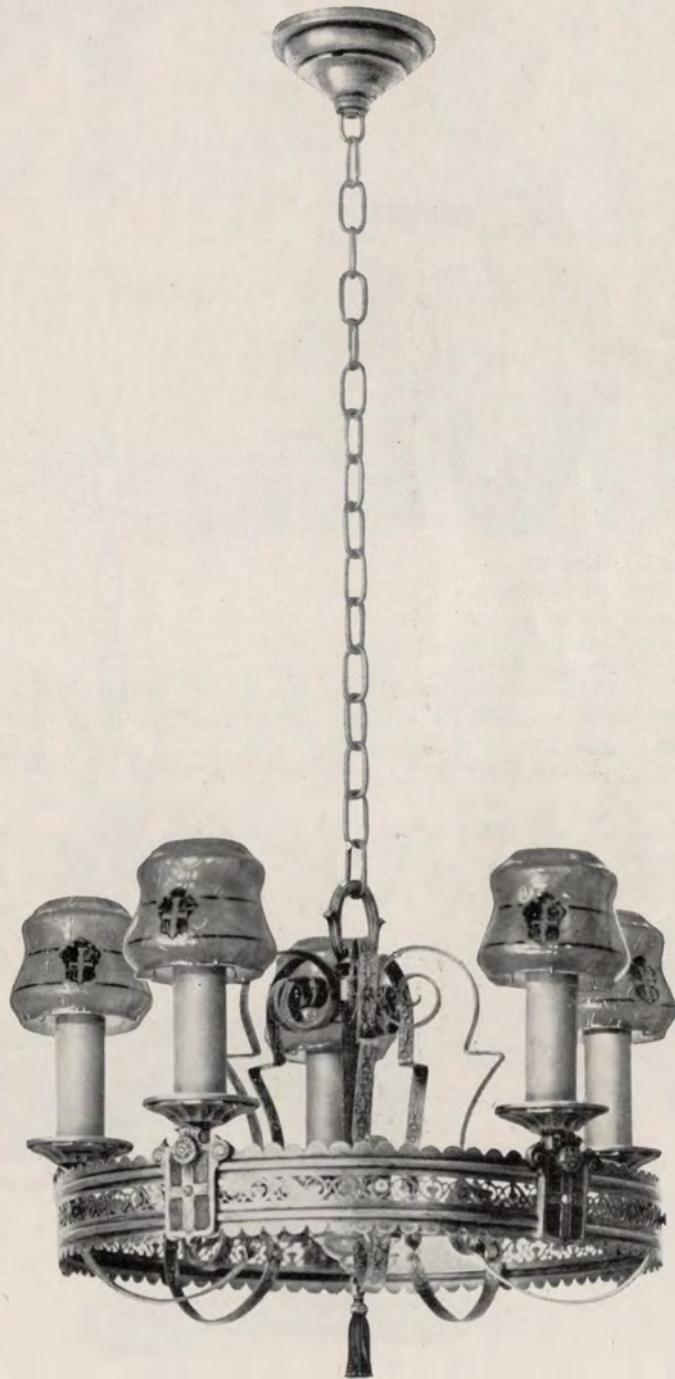


Bracket: No. 418
Projection: $3\frac{1}{2}$ inches
Finish: Antique Hammered Gold
Antique Silver
Old Ivory and Gold
Glass Shade No. 5672 $\frac{1}{2}$ C. R. 650
*May be used with 25 to 40 watt
Mazda lamps*

Fixture: No. 416
Length: 36 inches
Spread: $8\frac{1}{2}$ inches
Finish: Antique Hammered Gold
Antique Silver
Glass Shade No. 5672 $\frac{1}{2}$ C. R. 650
*May be used with 25 to 40 watt
Mazda lamps*



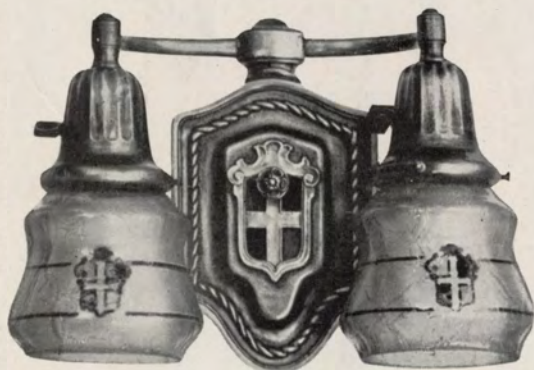
Bracket: No. 417
 Projection: 3 inches
 Spread: 6½ inches
 Finish: Antique Hammered Gold
 Antique Silver
 Old Ivory and Gold
 Glass Shade No. 5672½ C. R. 650
 May be used with 25 to 40 watt
 Mazda lamps



Fixture: No. 414
 Length: 48 inches
 Spread: 16 inches
 Finish: Antique Hammered Gold
 Antique Silver
 Glass Shade No. 5672½ C. R. 650
 May be used with 25 to 40 watt
 Mazda lamps

MILLER

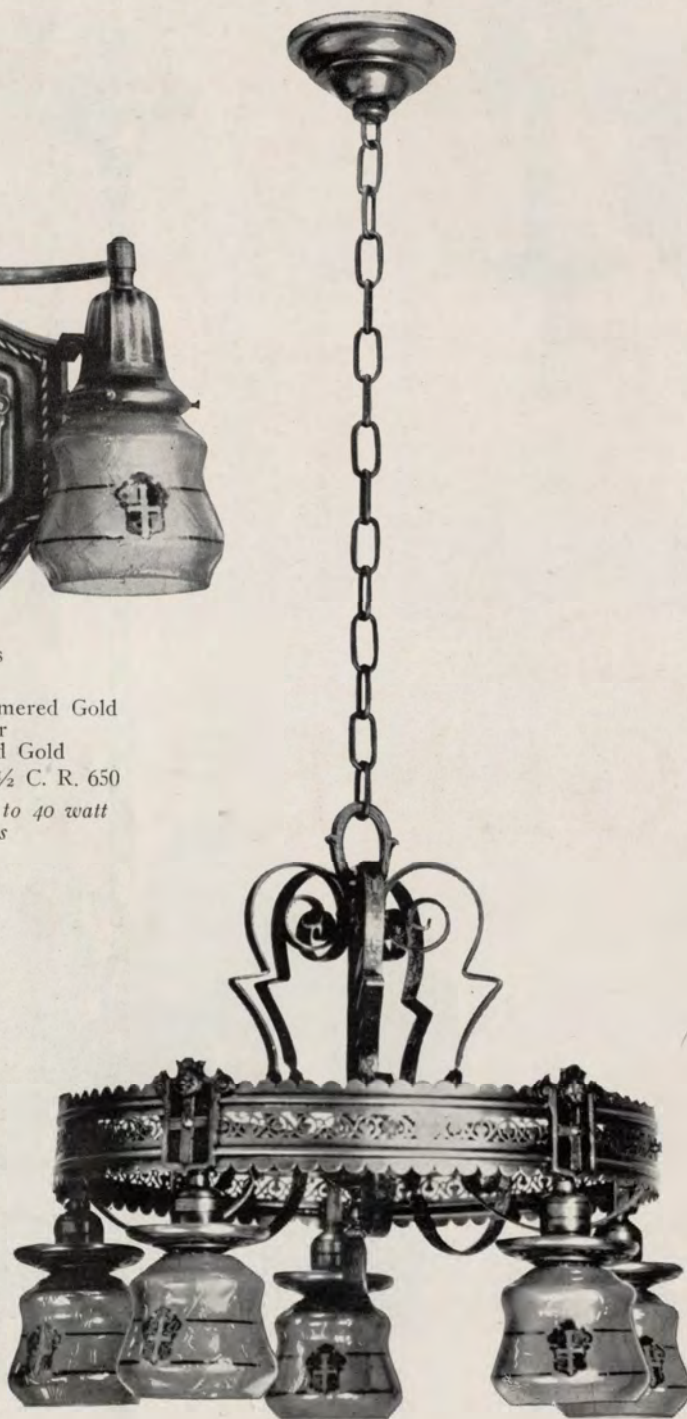
The
400
Line



Bracket: No. 421
Projection: $2\frac{3}{4}$ inches
Spread: $6\frac{1}{2}$ inches
Finish: Antique Hammered Gold
Antique Silver
Old Ivory and Gold
Glass Shade No. 5670 $\frac{1}{2}$ C. R. 650
*May be used with 25 to 40 watt
Mazda lamps*



Bracket: No. 422
Projection: $3\frac{1}{2}$ inches
Finish: Antique Hammered Gold
Antique Silver
Old Ivory and Gold
Glass Shade No. 5670 $\frac{1}{2}$ C. R. 650
*May be used with 25 to 40 watt
Mazda lamps*



Fixture: No. 413
Length: 36 inches
Spread: 16 inches
Finish: Antique Hammered Gold
Antique Silver
Glass Shade No. 5671 $\frac{1}{2}$ C. R. 650
*May be used with 25 to 40 watt
Mazda lamps*



The GENERAL *Line*

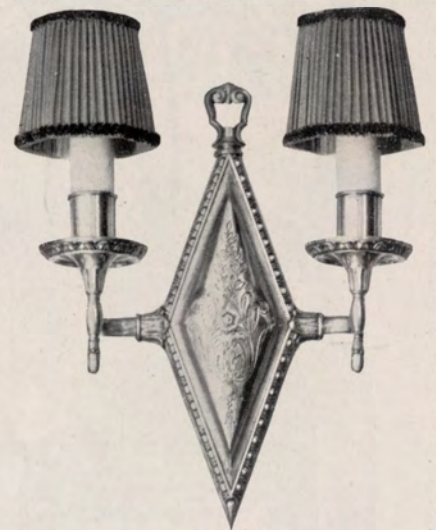


Many new homes today suggest no definite architectural period of the past. Yet their complete and perfect appointment demands a careful selection of lighting fixtures. From the following offering, an appropriate choice can often be made.

MILLER
The
GENERAL
Line



Fixture: No. 81
Length: 48 inches
Spread: 16½ inches
Finish: Silver and Black
Silk Shade No. 5179
*May be used with 25 to 40
watt Mazda lamps*



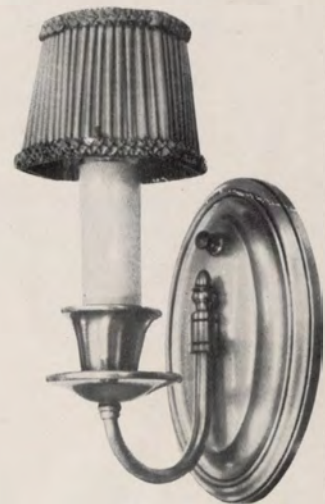
Bracket: No. 811
Projection: 2¾ inches
Spread: 8 inches
Finish: Silver and Black
Silk Shade No. 5179
*May be used with 25
to 40 watt Mazda lamps*

MILLER

The
GENERAL
Line



Bracket: No. 717
Projection: $3\frac{3}{4}$ inches
Spread: 5 inches
Finish: Old Brass and Black
Silver and Black
Silk Shade No. 5178
*May be used with 25 to 40
watt Mazda lamps*



Bracket: No. 716
Projection: $4\frac{1}{2}$ inches
Finish: Old Brass and Black
Silver and Black
Silk Shade No. 5178
*May be used with 25 to 40
watt Mazda lamps*



Fixture: No. 76
Length: 48 inches
Spread: 15 inches
Finish: Old Brass and Black
Silver and Black
Silk Shade No. 5180
*May be used with 25 to 40
watt Mazda lamps*

MILLER

The
GENERAL
Line



Bracket: No. 711
Projection: 4½ inches
Spread: 7¼ inches
Finish: Old Brass and Black
Silver and Black
Silk Shade No. 5180

*May be used with 25 to 40 watt
watt Mazda lamps*

Fixture: No. 71
Length: 48 inches
Spread: 17 inches
Finish: Old Brass and Black
Silver and Black
Silk Shade No. 5180

*May be used with 25 to 40
watt Mazda lamps*

MILLER

The
GENERAL
Line



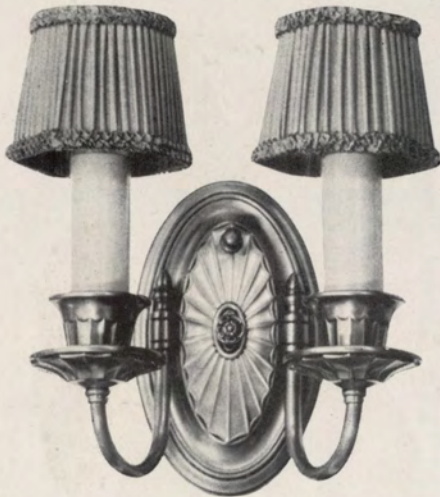
Bracket: No. 640
Projection: 3¼ inches
Finish: Antique Hammered Gold
Old Ivory
Old Ivory and Polychrome
Glass Shade No. 5502 C. R. 599
*May be used with 25 to 40 watt
Mazda lamps*



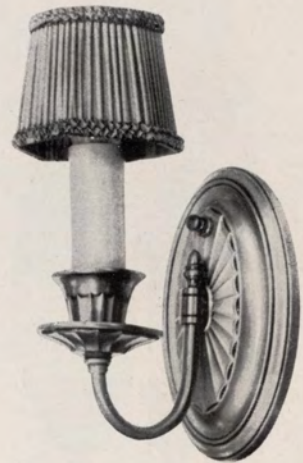
Fixture: No. 577
Length: 54 inches
Diameter: 20 inches
Finish: Old Brass and Black
Silver and Black
Panels of hammered glass tinted,
Adam decoration
*May be used with 25 to 50 watt
Mazda lamps*

MILLER

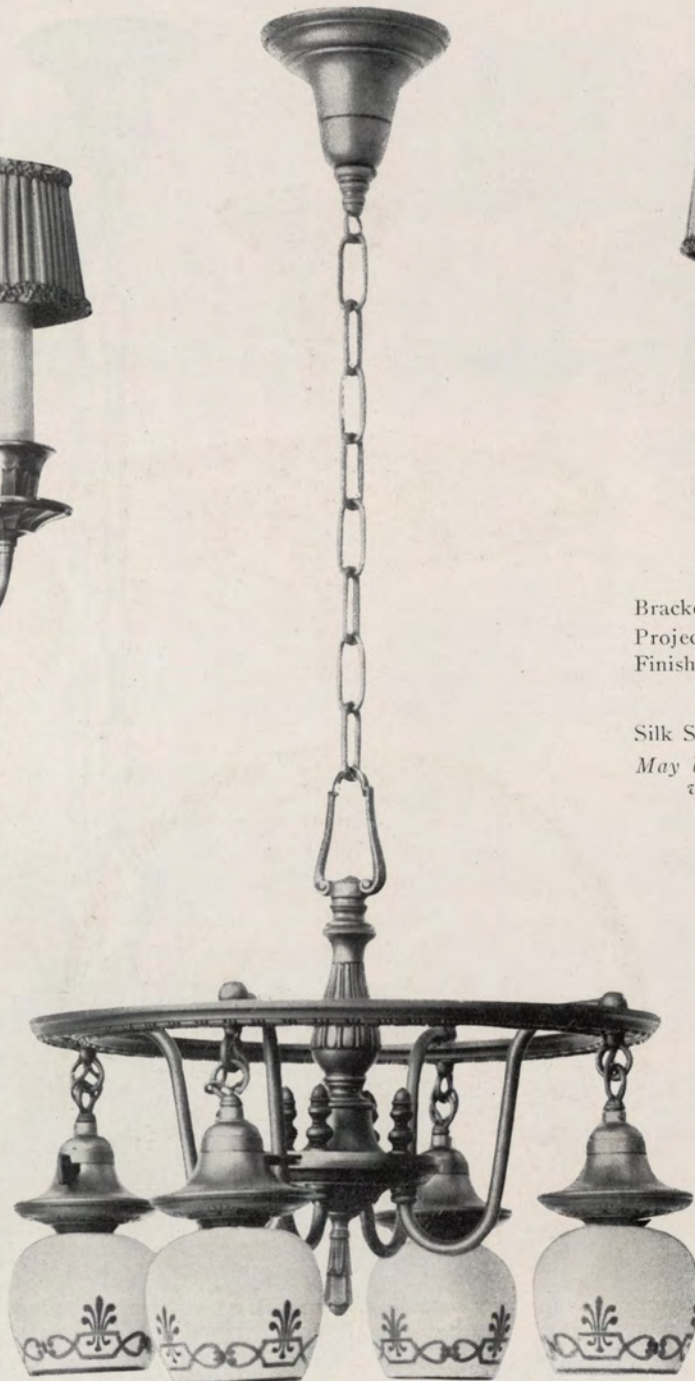
The
GENERAL
Line



Bracket: No. 526
Projection: 3 inches
Spread: 6½ inches
Finish: Old Brass and Black
Silver and Black
Old Ivory
Silk Shade No. 5178
*May be used with 25 to 40
watt Mazda lamps*



Bracket: No. 525
Projection: 4¼ inches
Finish: Old Brass and Black
Silver and Black
Old Ivory
Silk Shade No. 5178
*May be used with 25 to 40
watt Mazda lamps*



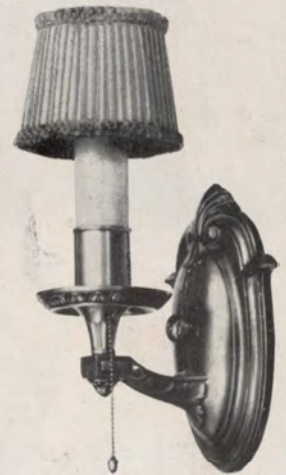
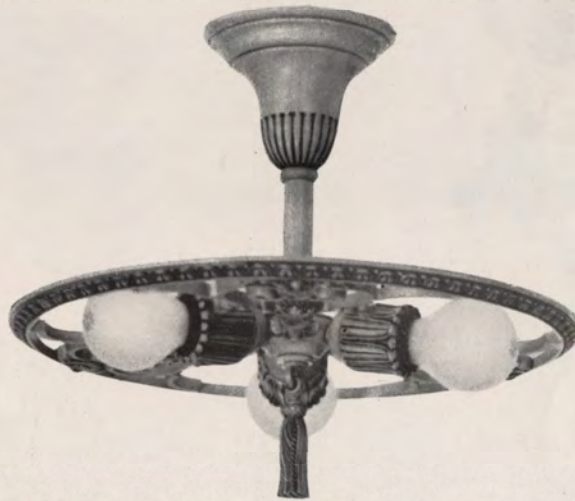
Fixture: No. 80
Length: 36 inches
Spread: 14 inches
Finish: Old Brass and Black
Colonial Gold and Brown
Glass Shade No. 5454½x4 Dec. 645
*May be used with 25 to 40 watt
Mazda lamps*

MILLER

The
GENERAL
Line



Bracket: No. 606
Projection: 3½ inches
Finish: Colonial Gold and Brown
Old Ivory and Polychrome
Glass Shade No. 5454½x4 Dec. 645
*May be used with 25 to 40 watt
Mazda lamps*



Bracket: No. 605
Projection: 3½ inches
Finish: Colonial Gold and Brown
Old Ivory and Polychrome
Silver and Black
Silk Shade No. 5178
*May be used with 25 to 40 watt
Mazda lamps*



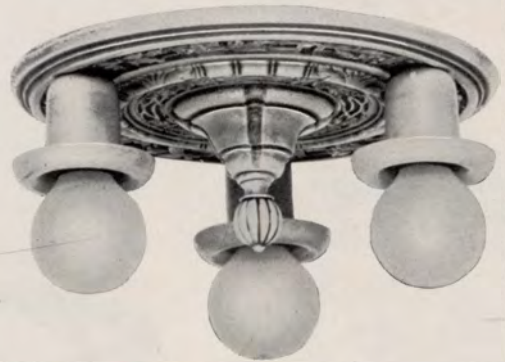
Fixture: No. 602
Length: 10 inches
Spread: 14 inches
Finish: Colonial Gold and Brown
Old Ivory and Polychrome
*May be used with 25 to 40 watt
Mazda lamps*

MILLER

The
GENERAL
Line



Fixture: No. 639 (2 and 3 Lt.)
Length: 9 inches
Spread: 8½ inches
Plate Diameter: 10 inches
Finish: Antique Hammered Gold
Old Ivory
Old Ivory and Polychrome
Glass Shade No. 5454½x4 Dec. 645
May be used with 25 to 40 watt
Mazda lamps



Fixture: No. 341
Length: 4¾ inches
Plate Diameter: 9⅞ inches
Finish: Old Ivory
Old Ivory and Polychrome
May be used with 25 to 50 watt
Mazda lamps

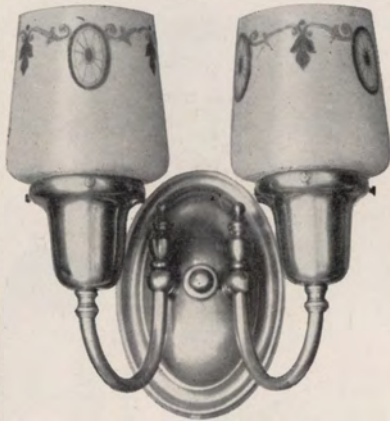


Fixture: No. 763
Length: 9 inches
Diameter: 10 inches
Finish: Old Ivory and Polychrome
Colonial Gold and Brown
May be used with 25 to 50 watt
Mazda lamps

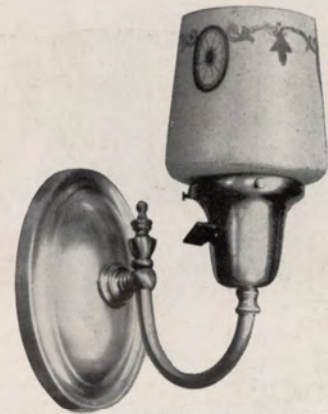


Fixture: No. 590 (2 and 3 Lt.)
Length: 8 inches
Spread: 9 inches
Finish: Old Brass and Black
Old Ivory
Glass Shade No. 5551½ Dec. 648
May be used with 25 to 40 watt
Mazda lamps

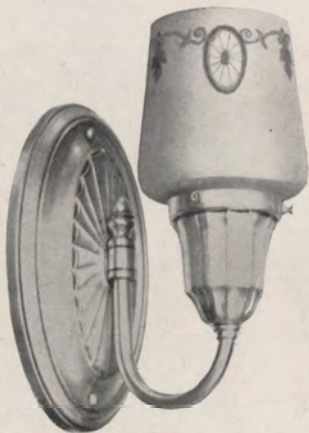
MILLER
The
GENERAL
Line



Bracket: No. 733
Projection: 4½ inches
Spread: 5¾ inches
Finish: Old Brass
Old Ivory
Dull Silver
Glass Shade No. 5634½ Dec. 648
*May be used with 25 to 40 watt
Mazda lamps*



Bracket: No. 732
Projection: 5½ inches
Finish: Old Brass
Old Ivory
Dull Silver
Glass Shade No. 5634½ Dec. 648
*May be used with 25 to 40 watt
Mazda lamps*

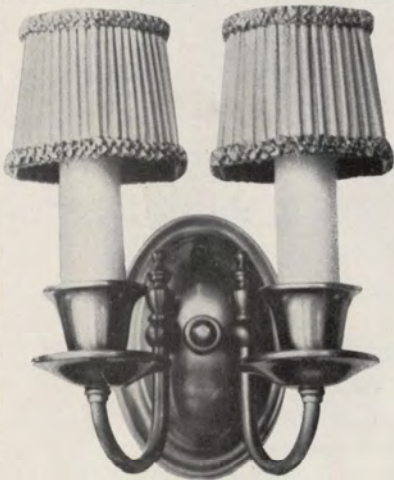


Bracket: No. 523
Projection: 4¼ inches
Finish: Old Brass and Black
Silver and Black
Old Ivory
Glass Shade No. 5634½ Dec. 648
*May be used with 25 to 40 watt
Mazda lamps*



Bracket: No. 524
Projection: 3 inches
Spread: 6½ inches
Finish: Old Brass and Black
Silver and Black
Old Ivory
Glass Shade No. 5634½ Dec. 648
*May be used with 25 to 40 watt
Mazda lamps*

MILLER
The
 GENERAL
Line



Bracket: No. 735
 Projection: 4¼ inches
 Spread: 5¼ inches
 Finish: Old Brass
 Old Ivory
 Dull Silver
 Silk Shade No. 5178
*May be used with 25
 to 40 watt Mazda lamps*



Bracket: No. 734
 Projection: 5½ inches
 Finish: Old Brass
 Old Ivory
 Dull Silver
 Silk Shade No. 5178
*May be used with 25
 to 40 watt Mazda lamps*

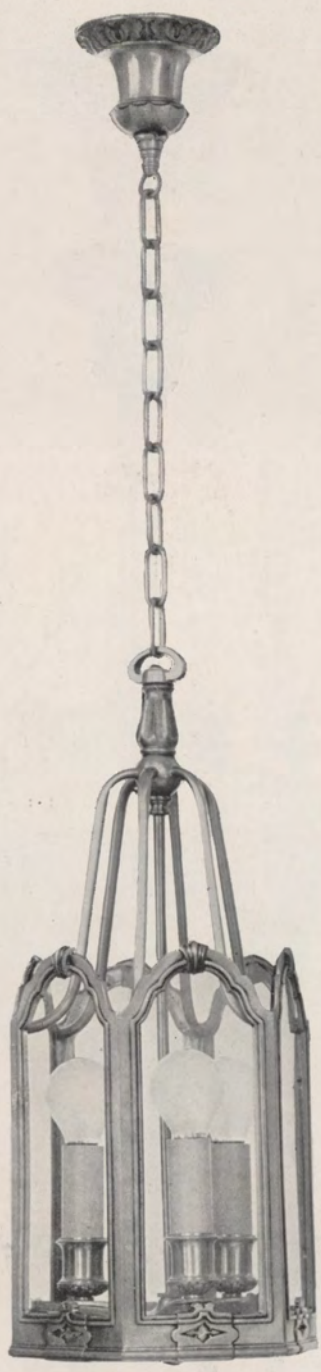


Fixture: No. 623
 Length: 36 inches
 Diameter of Shade: 15 inches
 Finish: Old Ivory with flowers
 in natural color
 Panels and bottom of Amber
 Art glass
*May be used with 25 to 40 watt
 Mazda lamps*

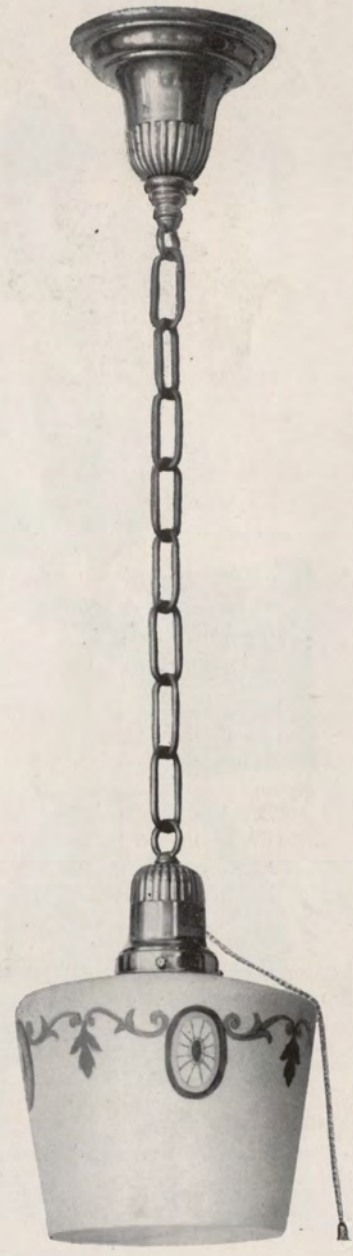
MILLER
The
GENERAL
Line



Fixture: No. 625
 Length: 36 inches
 Diameter of Lantern: 8 inches
 Finish: Old Brass and Black
 Colonial Bronze
 Panels of clear glass
 May be used with 25 to 50 watt
 Mazda lamps



Fixture: No. 69
 Length: 42 inches
 Finish: Old Brass and Black
 Lantern: 10 x 13 inches
 Panels of clear glass
 May be used with 25 to 50 watt
 Mazda lamps

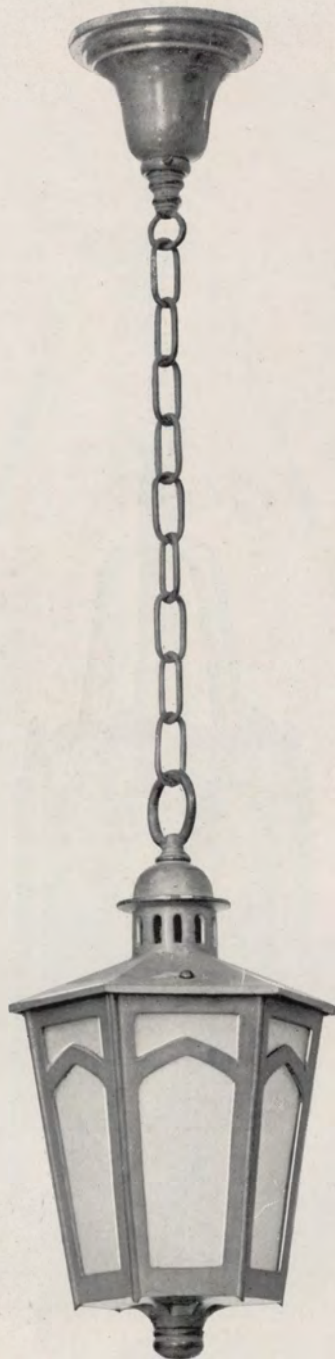


Fixture: No. 624
 Length: 42 inches
 Finish: Old Brass and Black
 Glass Shade No. 5500x7 Dec. 648
 May be used with 40 to 100 Watt
 Mazda lamps

MILLER
The
 GENERAL
Line



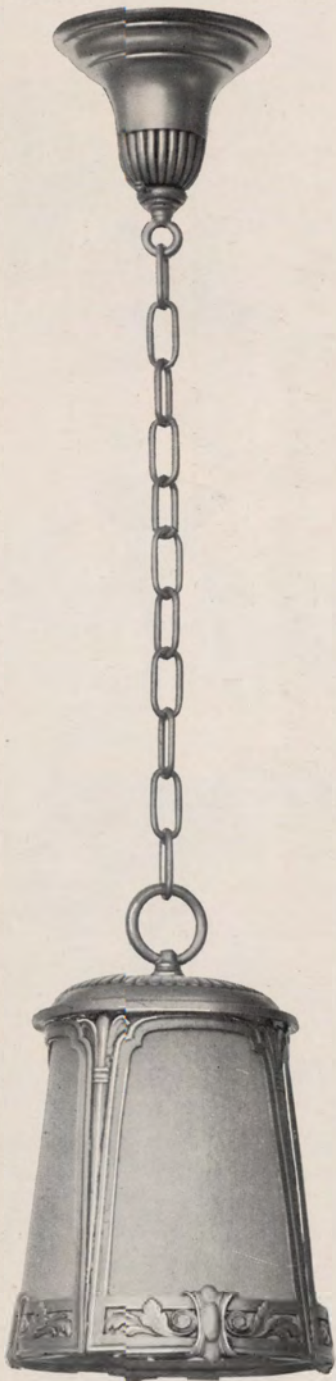
Bracket Lantern: No. 599
 Projection: 6 inches
 Lantern Height: 10 inches
 Lantern Diameter: 7 inches
 Finish: Black Iron
 Verde Antique
 Panels of Hammered Crystal glass
*May be used with 40 to 100 watt
 Mazda lamps*



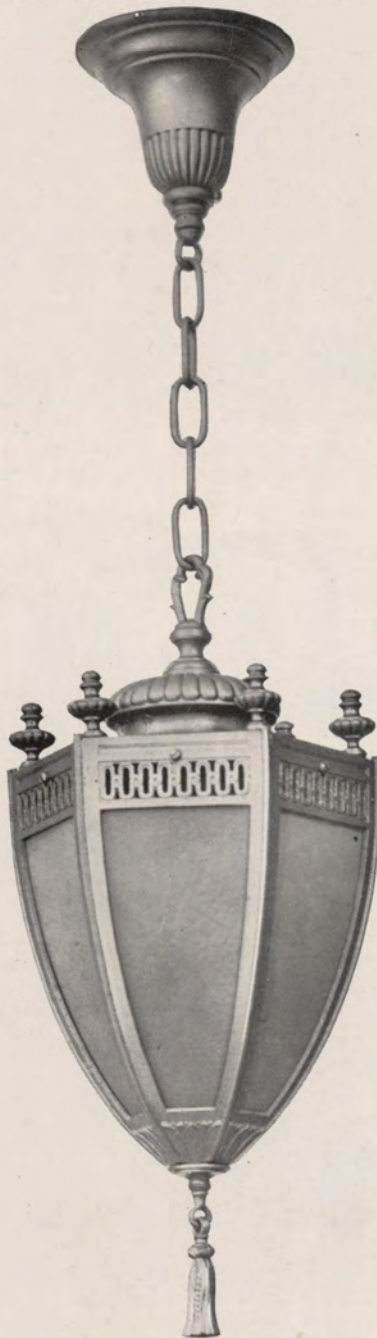
Bracket Lantern: No. 746
 Projection: 6 inches
 Lantern Height: 10 inches
 Lantern Diameter: 7 inches
 Finish: Black Iron
 Verde Antique
 Panels of Hammered Crystal glass
*May be used with 40 to 100 watt
 Mazda lamps*

Fixture: No. 600
 Length: 36 inches
 Lantern: 7 x 10 inches
 Finish: Black Iron
 Verde Antique
 Old Brass and Black
 Panels of Hammered Crystal glass
*May be used with 40 to 100 watt
 Mazda lamps*

MILLER
The
GENERAL
Line



Fixture: No. 579
Length: 36 inches
Lantern Height: 8½ inches.
Lantern Diameter: 7 inches
Finish: Old Brass and Black
Panels of Hammered Crystal glass
May be used with 40 to 100 watt
Mazda lamps

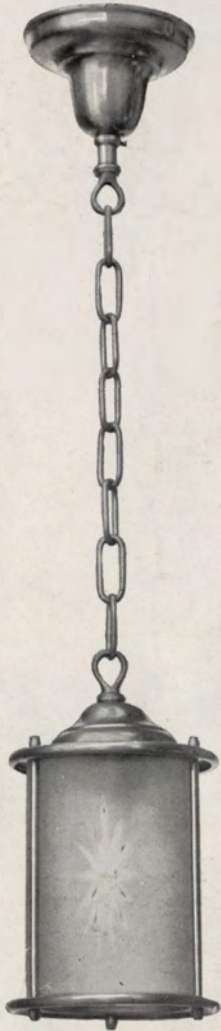


Fixture: No. 601
Length: 36 inches
Lantern: 8 x 9 inches
Finish: Old Brass and Black
Colonial Gold and Brown
Panels of Crystal Chipped glass
May be used with 40 to 100 watt
Mazda lamps



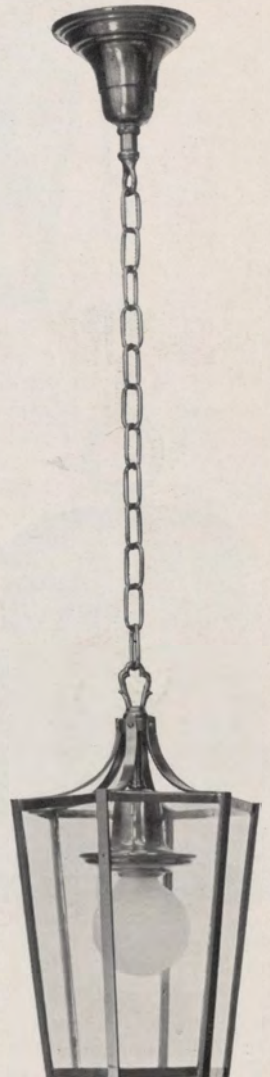
Fixture: No. 576
Length: 36 inches
Lantern: 7 x 9½ inches
Finish: Old Brass and Black
Panels of Crystal Chipped glass
May be used with 40 to 100 watt
Mazda lamps

MILLER
The
GENERAL
Line



Fixture: No. 761
Length: 30 inches
Lantern: 6 x 9 inches
Finish: Colonial Brass
Dull Silver

*May be used with 40 to 100 watt
Mazda lamps*



Fixture: No. 762
Length: 36 inches
Lantern: 8 x 12 inches
Finish: Colonial Gold and Brown
Panels of clear glass

*May be used with 25 to 60 watt
Mazda lamps*

MILLER
The
GENERAL
Line

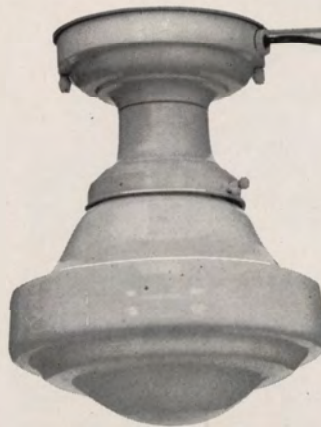


2 gray
1 white
1 ivory

Bracket: No. 529
Projection: 5½ inches
Finish: Dull Brass
Nickel
White Enamel
Ivory
Glass Shade No. 546½
May be used with 25 to
40 watt Mazda lamps



Bracket Lantern: No. 585
Projection: 6 inches
Lantern: 5 x 5½ inches
Finish: Black Iron
Verde Antique
Panels of Hammered Crystal glass
May be used with 40 to 100 watt
Mazda lamps



Fixture: No. 674
Finish: White Enamel
No. 5243x9 inch glass
May be used with 100
to 150 watt Mazda
lamps



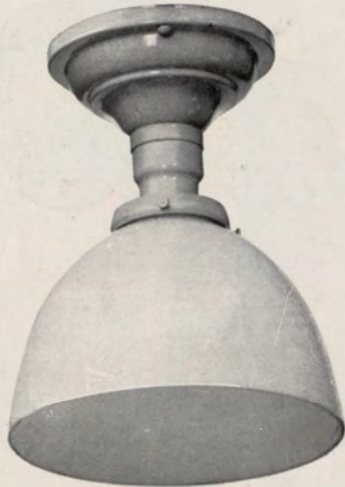
Fixture: No. 584
Length: 13 inches
Lantern: 5x5½ inches
Finish: Black Iron
Verde Antique
Panels of Hammered Crystal glass
May be used with 40 to 100 watt
Mazda lamps



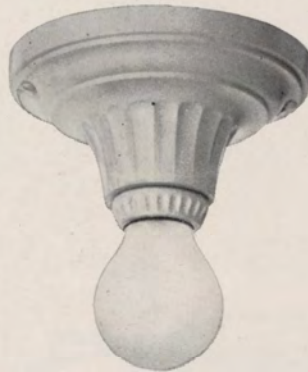
Fixture: No. 645
Length: 8 inches
Finish: White Enamel
Ivory
Glass Shade No. 5347
May be used with 25
to 100 watt Mazda
lamps

MILLER

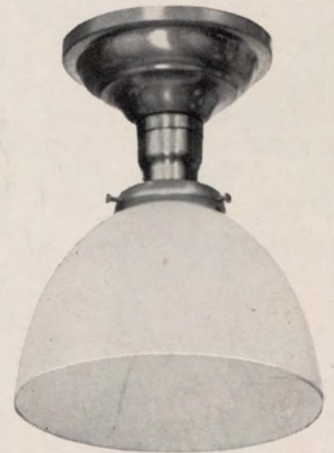
The
GENERAL
Line



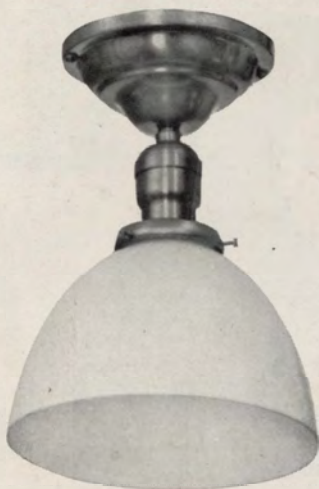
Fixture: No. 532
Length: 5 inches
Finish: Dull Brass
Glass Shade No. 5347
*May be used with 25
to 100 watt Mazda
lamps*



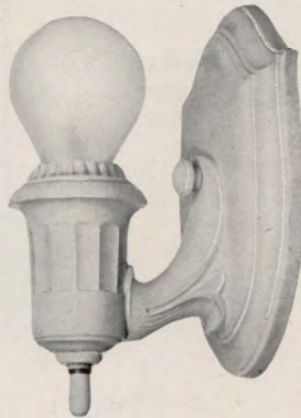
Fixture: No. 642
Length: 6 inches
Finish: White Enamel
Ivory
*May be used with 25 to
60 watt Mazda lamps*



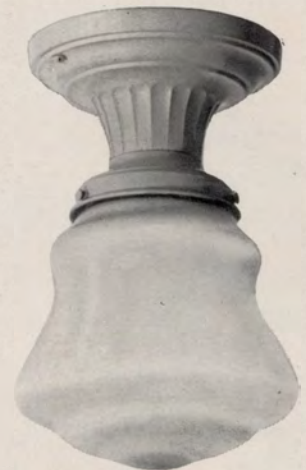
Fixture: No. 582
Length: 5 inches
Finish: Dull Brass
Glass Shade No. 5347
*May be used with 25 to 100 watt
Mazda lamps*



Fixture: No. 533
Length: 5 inches
Finish: Dull Brass
Glass Shade No. 5347
*May be used with 25
to 100 watt Mazda
lamps*



Bracket: No. 641
Projection: 3¼ inches
Finish: White Enamel
Ivory
*May be used with 25 to
60 watt Mazda lamps*



Fixture: No. 680
Length: 9½ inches
Finish: White Enamel
Ivory
Glass Globe No. 5730
*May be used with 40 to
60 watt Mazda lamps*

MILLER
SHADES
for
Lighting
Fixtures



No. 5500 Dec. 648
Diameter 7 in.
Depth 6¼ in.



No. 5376 Dec. 702
Diameter 7 in.
Depth 7½ in.



No. 5500 Dec. 647
Diameter 7 in.
Depth 6¼ in.



No. 5551½ Dec. 648
Diameter 3¾ in.
Depth 3¾ in.



No. 5672½ Dec. 647
Diameter 3¾ in.
Depth 3⅛ in.



No. 5634½ Dec. 648
Diameter 3¾ in.
Depth, 4¼ in.



No. 5454½ Dec. 647
Diameter 4½ in.
Depth 4 in.



No. 5502 C. R. 599
Diameter 4 in.
Depth 4 in.



No. 5258
Diameter 4 in.
Depth 4 in.



No. 5633½ C. R. 599
Diameter 4 in.
Depth 3½ in.



No. 5257
Diameter 4 in.
Depth 3¾ in.



No. 5634½ C. R. 599
Diameter 3¾ in.
Depth 4¼ in.



No. 5670½ Dec. 647
Diameter 3¾ in.
Depth 3¾ in.



No. 2352½ Dec. 702
Diameter 4 in.
Depth 3⅞ in.



No. 5454½ Dec. 645
Diameter 4 in.
Depth 3½ in.



No. 5245½ Dec. 409
Diameter, 3¾ in.
Depth 3⅞ in.



No. 5671½ Dec. 647
Diameter 3¾ in.
Depth 3⅞ in.

MILLER
SHADES
for
Lighting
Fixtures



No. 5671½ C. R. 650
Diameter 3¾ in.
Depth 3⅜ in.



No. 5670½ C. R. 650
Diameter 3¾ in.
Depth 3¾ in.



No. 5672½ C. R. 650
Diameter 3¾ in.
Depth 3⅞ in.



No. 5347
Diameter 6 in.
Depth 4¼ in.



No. 546½
Diameter 4¾ in.
Depth, 4¼ in.



No. 5730
Diameter 5½ in.
Depth 5½ in.



No. 5178
Diameter 4 in.
Depth 3 in.



No. 5672½ Dec. 649
Diameter 3¾ in.
Depth 3⅞ in.



No. 5671½ Dec. 649
Diameter 3¾ in.
Depth 3⅞ in.



No. 5181
Diameter 4⅞ in.
Depth 3 in.



No. 5454½ Dec. 646
Diameter 4½ in.
Depth 4 in.



No. 5672½ Dec. 646
Diameter 3¾ in.
Depth 3⅞ in.



No. 2351½ Dec. 702
Diameter 5 in.
Depth 4⅞ in.



No. 5454½ Dec. 646
Diameter 4 in.
Depth 3½ in.



No. 5180
Diameter 4¼ in.
Depth, 4 in.



No. 5076
Diameter 4¼ in.
Depth 4 in.



No. 5077
Diameter 4⅞ in.
Depth 3 in.



No. 5179
Diameter 4⅞ in.
Depth, 4 in.

Classified Index

<i>Fixture Line</i>	<i>Page</i>
THE SEVILLE LINE	5 to 10 inclusive
THE GEORGIAN LINE	11 to 18 inclusive
THE ENGLISH LINE	19 to 28 inclusive
THE EARLY COLONIAL LINE	29 to 42 inclusive
THE 400 LINE	43 to 48 inclusive
THE GENERAL LINE	49 to 64 inclusive
<hr style="width: 20%; margin: 10px auto;"/>	
SHADES FOR LIGHTING FIXTURES	Pages 65-66

Numerical Index

<i>No.</i>	<i>Page</i>	<i>No.</i>	<i>Page</i>	<i>No.</i>	<i>Page</i>	<i>No.</i>	<i>Page</i>
69	59	328	30	585	63	659	15
71	52	329	30	590	56	661	17
76	51	331	32	599	60	664	18
80	54	332	30	600	60	665	18
81	50	333	38	601	61	668	15
83	8	334	37	602	55	674	63
84	9	335	38	605	55	680	64
87	13	336	39	606	55	693	20
88	25	337	38	610	6	694	20
89	23	338	39	611	6	695	21
90	24	339	38	612	7	696	22
300	42	340	36	612	21	697	27
301	35	341	56	613	7	698	21
302	41	410	45	614	10	699	23
303	42	411	44	615	7	701	26
304	34	412	45	616	10	702	26
305	35	413	48	617	8	703	23
306	42	414	47	623	58	711	52
307	37	415	45	624	59	716	51
308	33	416	46	625	59	717	51
309	33	417	47	636	6	728	28
310	40	418	46	637	10	732	57
311	36	421	48	639	56	733	57
313	32	422	48	640	53	734	58
314	40	423	44	641	64	735	58
315	37	424	44	642	64	736	27
316	39	523	57	645	63	746	60
317	32	524	57	648	6	761	62
318	34	525	54	649	12	762	62
319	33	526	54	650	12	763	56
320	35	529	63	651	12	811	50
321	36	532	64	652	16	812	14
322	31	533	64	653	14	813	8
323	31	576	61	654	15	814	9
324	31	577	53	655	17	817	13
325	41	579	61	656	17	818	25
326	30	582	64	657	18	819	24
327	30	584	63				

