

The Miller Company

Meriden, Connecticut

To Our Authorized Dealers:

The inside pages of this circular lists and gives the prices on the leavings of a special line of fixtures which we are offering at special prices. These fixtures are illustrated and described in the attached catalog.

Because we want to move our stocks on these numbers during the next 60 days, is the only reason for the remarkably low prices. The reductions are almost radical!

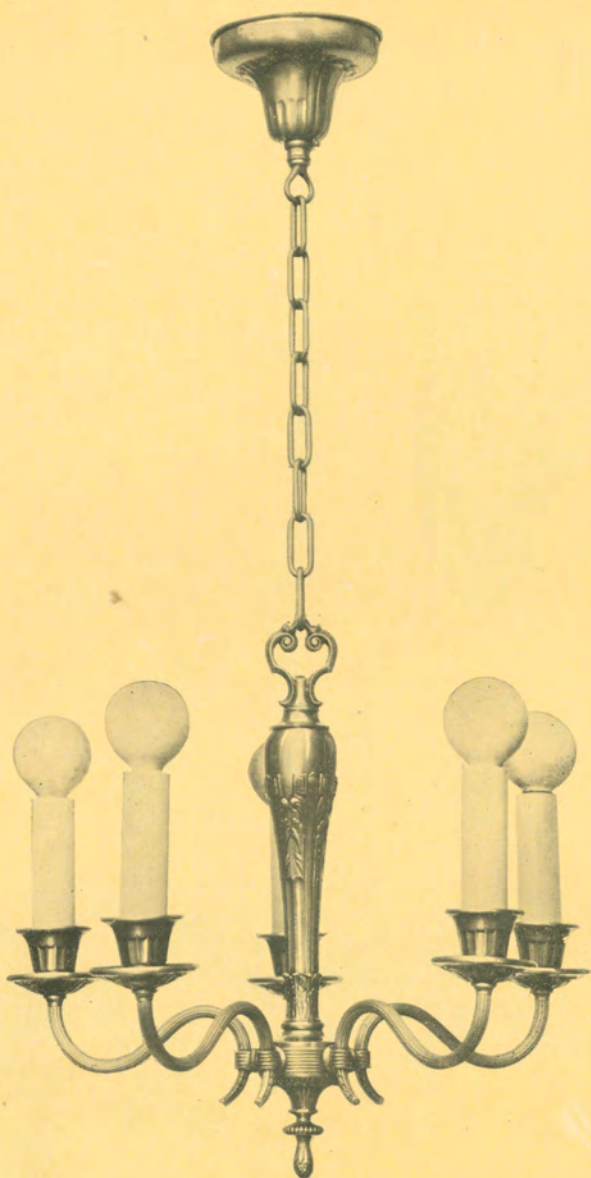
These fixtures are well finished and are sturdy in construction. They are ideal for the competitive apartment house and have a wide general appeal.

We urge you to anticipate your requirements and let us have your order now while the assortment is at its best. All orders accepted subject to prior sale.

THE MILLER COMPANY

<i>Page</i>	<i>Catalog No.</i>	<i>Quantity</i>	<i>Net Price, Each Without Shades</i>
3	G114	4 in Old Brass and Black 49 in Silver and Black	\$9.50 9.50
4	G109	40 in Satin Brown and Gold 51 in Old Brass and Black	1.85 1.85
4	G113	86 in Old Brass and Black 102 in Satin Brown and Gold 44 in Silver and Black 47 in Old Ivory and Gold 10 in Satin Gray and Gold	1.75 1.75 1.75 1.75 1.75
7	G141 3 Lights	4 in Satin Brown and Gold 18 in Satin Gray and Gold	4.25 4.25
8	G141 4 Lights	13 in Satin Gray and Gold	4.75
9	G142	149 in Old Brass and Black 54 in Silver and Black 242 in Satin Gray and Gold 64 in Satin Brown and Gold	1.25 1.25 1.25 1.25
10	G143	13 in Satin Brown and Gold 13 in Old Ivory and Gold 16 in Old Brass and Black	3.50 3.50 3.50
11	G143	7 in Old Ivory	3.50
12	G144	30 in Old Brass and Black 38 in Satin Brown and Gold 7 in Old Ivory and Gold 14 in Satin Gray and Gold	1.25 1.25 1.25 1.25
14	G145	7 in Old Brass and Black 13 in Old Ivory and Gold	2.75 2.75

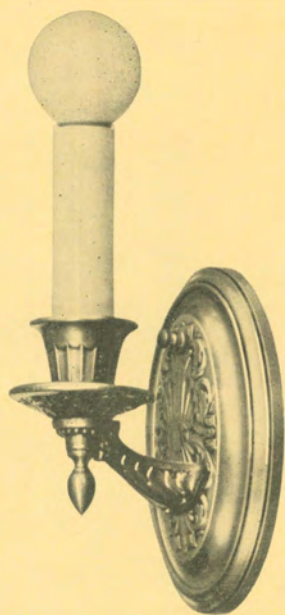
<i>Page</i>	<i>Catalog No.</i>	<i>Quantity</i>	<i>Net Price Each Without Shades</i>
15	G146	375 in Old Brass and Black 11 in Old Ivory and Gold 37 in White Enamel	.90 .90 .90
17	G147	4 in Old Brass and Black	2.75
18	G120	103 in Old Brass and Black 28 in Silver and Black 52 in Old Ivory and Gold	2.95 2.95 2.95
18	G121	100 in Old Ivory and Gold 40 in Satin Brown and Gold 4 in Old Brass and Black	1.75 1.75 1.75
22	G129	309 in Old Brass and Black	1.35
23	G106	48 in White Enamel	.75
24	G123	5 in Satin Brown and Gold	2.75
24	G128	15 in Silver and Brown	3.25
26	G148 2 Lights	17 in Satin Brown and Gold 15 in Old Ivory and Gold	3.00 3.00
26	G148 3 Lights	100 in Old Ivory and Gold	3.50
28	G127	11 in Colonial Gold and Brown	7.00
29	G130	7 in Silver and Black	11.00
31	G131	20 in Venetian and Gold	8.00
43	G140	47 in Silver and Black	7.50
46	G152	16 in Silver and Black	3.00
46	G153	18 in Silver and Black	2.25
47	G157	15 in Satin Brown and Gold	3.25
48	G159	12 in Satin Brown and Gold	2.90



No. G 114

Length, 36 inches. Spread, 16½ inches.

Old Brass and Black. Satin Brown and Gold. Silver and Black.

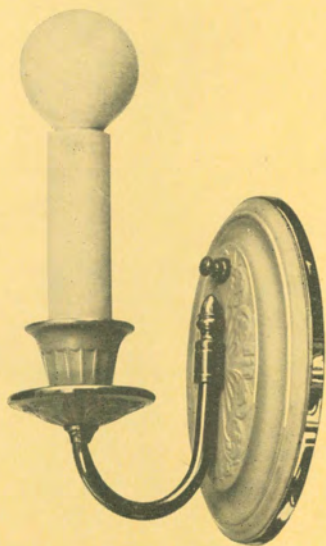


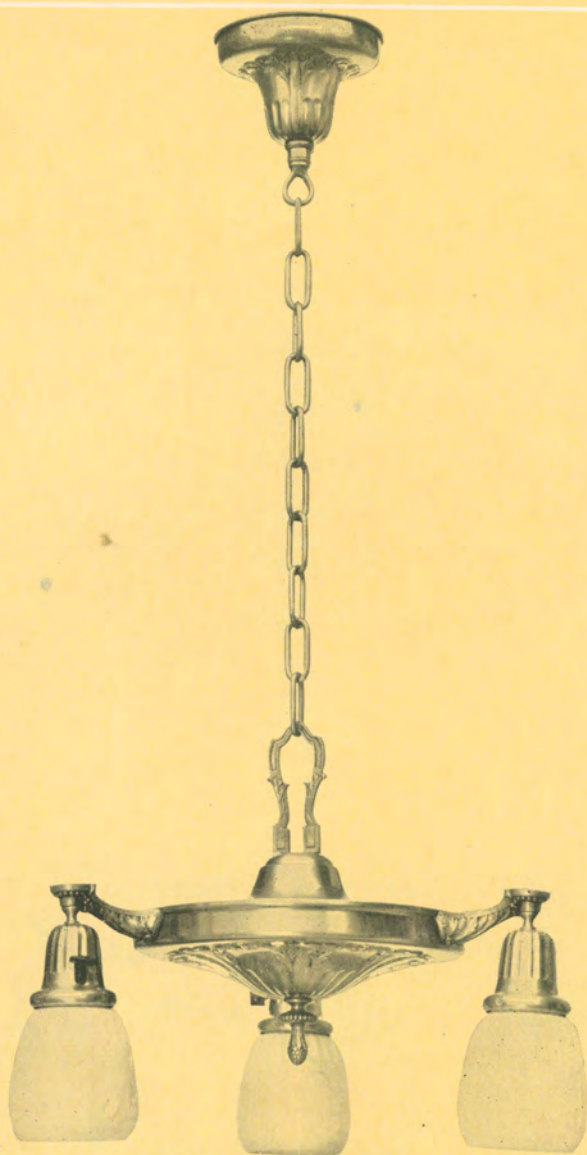
No. G 113

Projection, $3\frac{3}{4}$ inches.
Old Brass and Black.
Satin Brown and Gold.
Silver and Black.

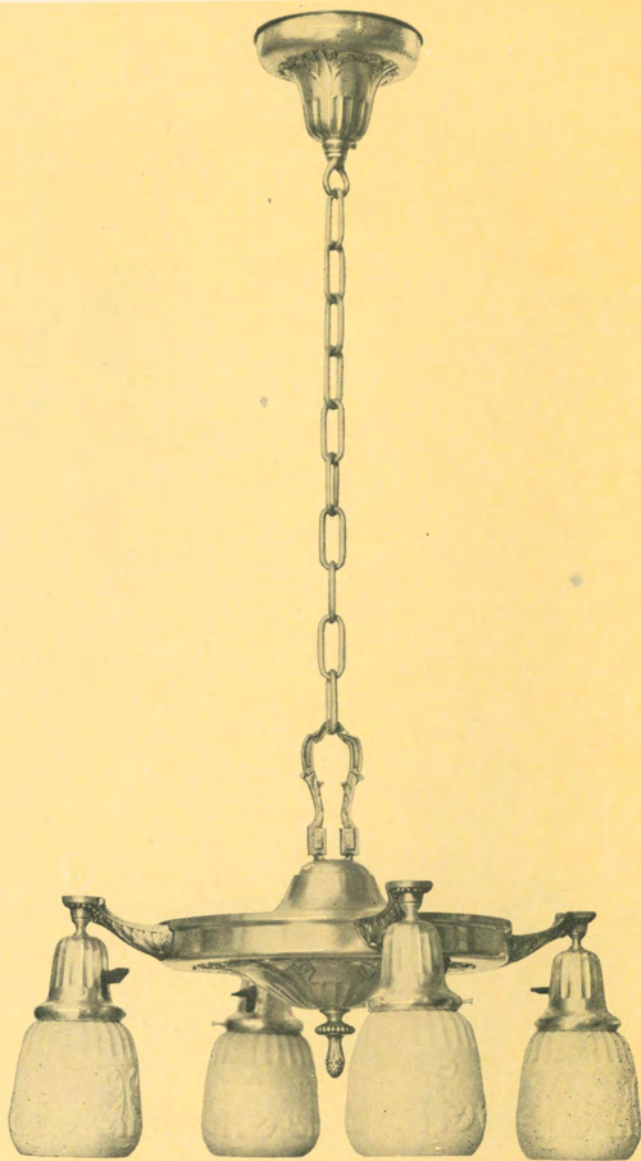
No. G 109

Projection, $4\frac{1}{4}$ inches.
Old Brass and Black.
Satin Brown and Gold.
Silver and Black.

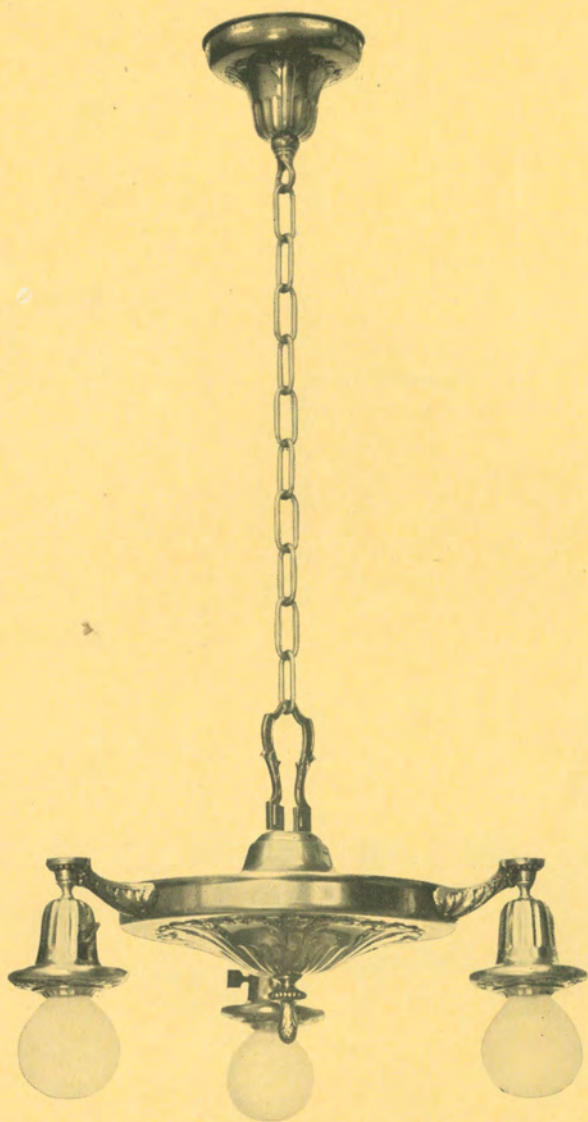




No. G 141—3 Lights
Length, 36 inches. Spread, 16 inches.
Old Brass and Black.
Satin Brown and Gold.
Satin Gray and Gold.



No. G 141—4 Lights
Length, 36 inches. Spread, 16 inches.
Old Brass and Black.
Satin Brown and Gold.
Satin Gray and Gold.



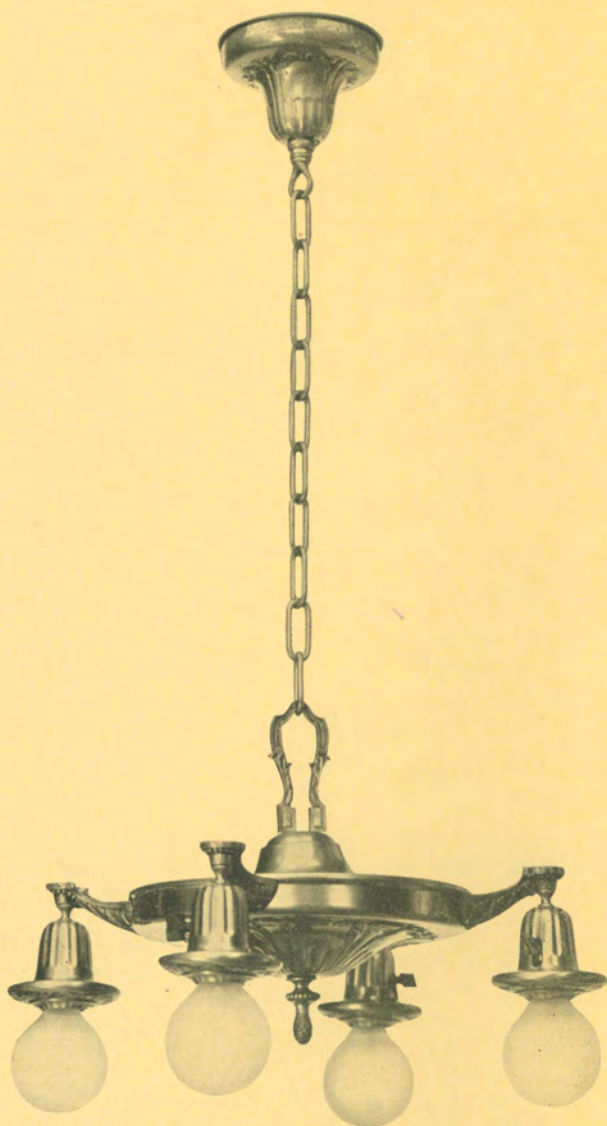
No. G 141—3 Lights, with No. 621 ball lamp adaptors.

Length, 36 inches. Spread, 16 inches.

Old Brass and Black.

Satin Brown and Gold.

Satin Gray and Gold.



No. G 141—4 Lights, with No. 621 ball lamp adaptors.

Length, 36 inches. Spread, 16 inches.

Old Brass and Black.

Satin Brown and Gold.

Satin Gray and Gold.



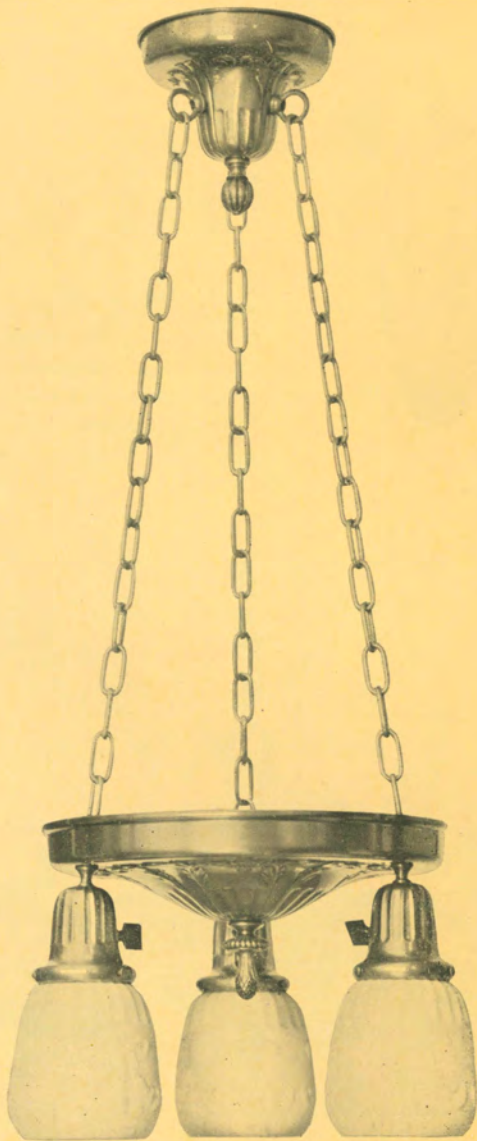
No. G 142

Projection, $3\frac{3}{4}$ inches
Old Brass and Black,
Satin Brown and Gold.
Satin Gray and Gold.

No. G 142 with No. 621 ball lamp adaptor.

Projection, $3\frac{3}{4}$ inches
Old Brass and Black,
Satin Brown and Gold.
Satin Gray and Gold.





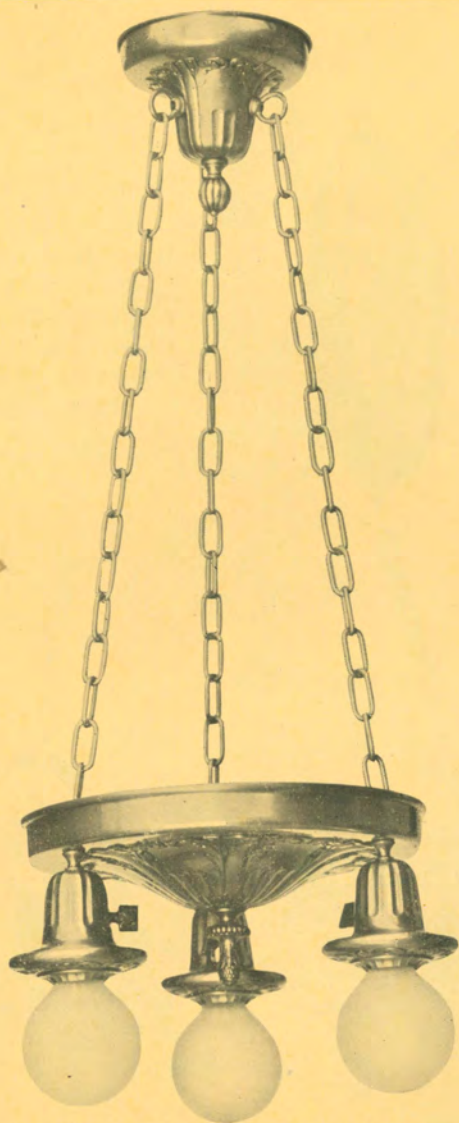
No. G 143

Length, 36 inches. Plate, 11 inch diameter.

Old Brass and Black.

Satin Brown and Gold.

Old Ivory and Gold.



No. G 143, with No. 621 ball lamp adaptors.
Length, 36 inches. Plate, 11 inch diameter.

Old Brass and Black.
Satin Brown and Gold.
Old Ivory and Gold.



No. G 144 with No. 621 ball
lamp adaptor.

Projection, $4\frac{1}{4}$ inches.

Old Brass and Black.

Satin Brown and Gold.

Old Ivory and Gold.

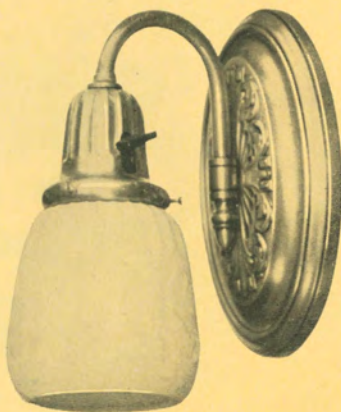
No. G 144

Projection, $4\frac{1}{4}$ inches.

Old Brass and Black.

Satin Brown and Gold.

Old Ivory and Gold.





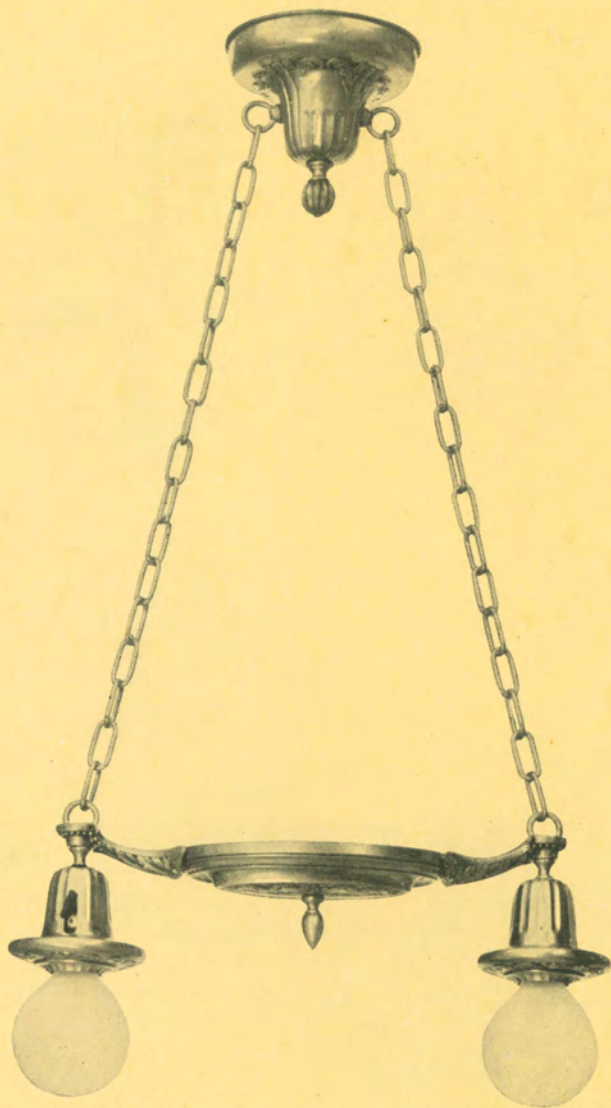
No. G 145

Length, 36 inches. Spread, 12 inches.

Old Brass and Black.

Satin Brown and Gold.

Old Ivory and Gold.



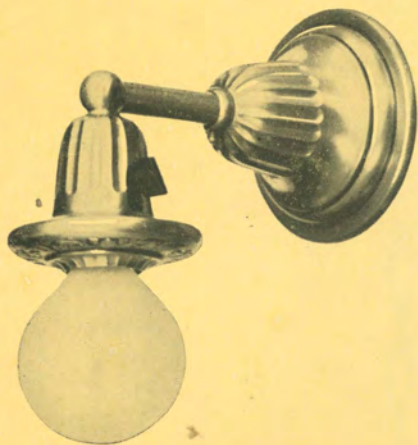
No. G 145 with No. 621 ball lamp adaptors.

Length, 36 inches. Spread, 12 inches.

Old Brass and Black.

Satin Brown and Gold.

Old Ivory and Gold.



No. G 146 with No. 621
ball lamp adaptor.

Projection, 5½ inches.

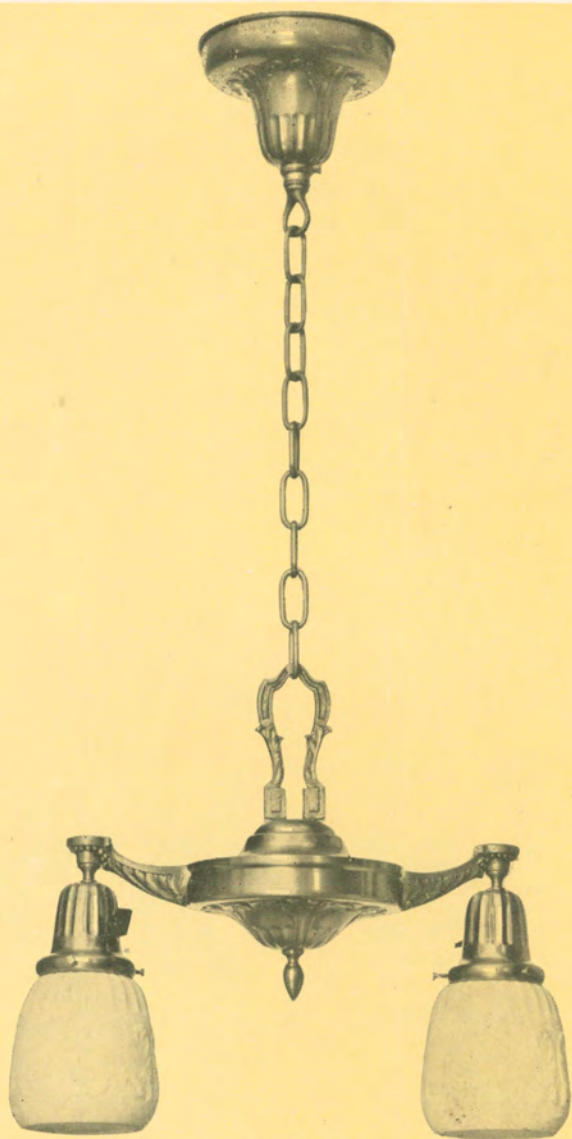
Old Brass and Black.
Satin Brown and Gold.
Old Ivory and Gold.

No. G 146

Projection, 5½ inches.

Old Brass and Black.
Satin Brown and Gold.
Old Ivory and Gold.





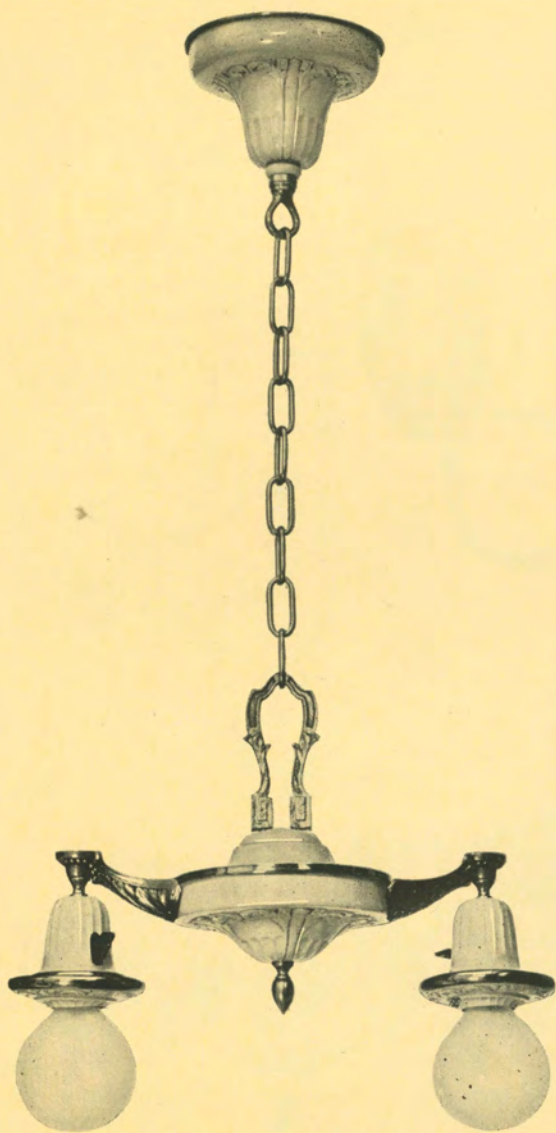
No. G 147

Length, 36 inches. Spread, 11 inches.

Old Brass and Black.

Satin Brown and Gold.

Old Ivory and Gold.



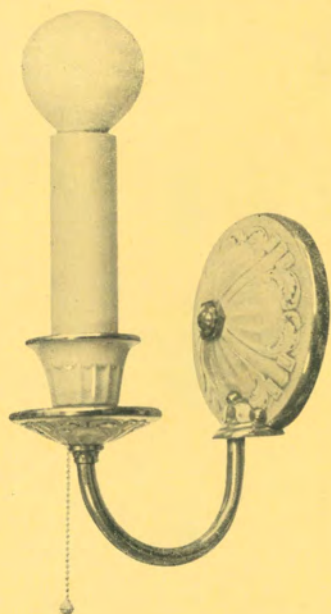
No. G 147 with No. 621 ball lamp adaptors.

Length, 36 inches. Spread, 11 inches.

Old Brass and Black.

Satin Brown and Gold.

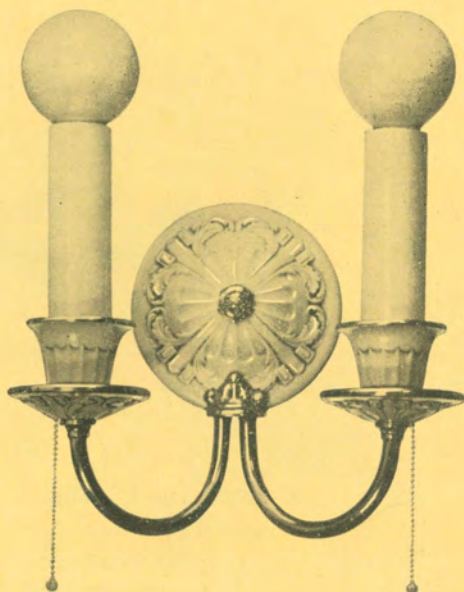
Old Ivory and Gold.



No. G 121

Projection, $4\frac{1}{2}$ inches.
Old Brass and Black.
Satin Brown and Gold.
Old Ivory and Gold.
Silver and Black.

No. G 120
Spread, $6\frac{1}{2}$ inches.
Old Brass and Black.
Satin Brown and Gold.
Old Ivory and Gold.
Silver and Black.





No. G 102

Length, 12 inches. Diameter, $4\frac{3}{4}$ inches.

Crystal Hammered Glass Panels.

Black Iron.

Verde Antique.

No. G 101

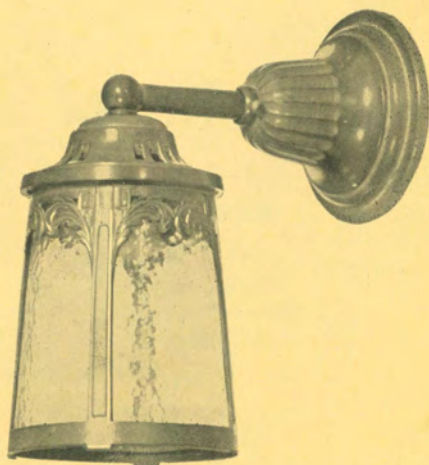
Projection, 6 inches.

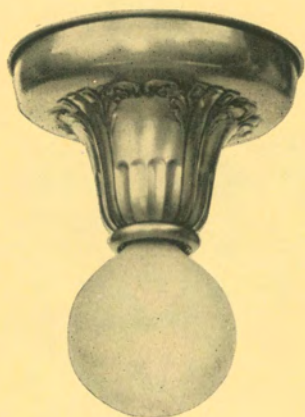
Diameter, $4\frac{3}{4}$ inches.

Crystal Hammered Glass Panels.

Black Iron.

Verde Antique.





No. G 100

Length, 7 inches.

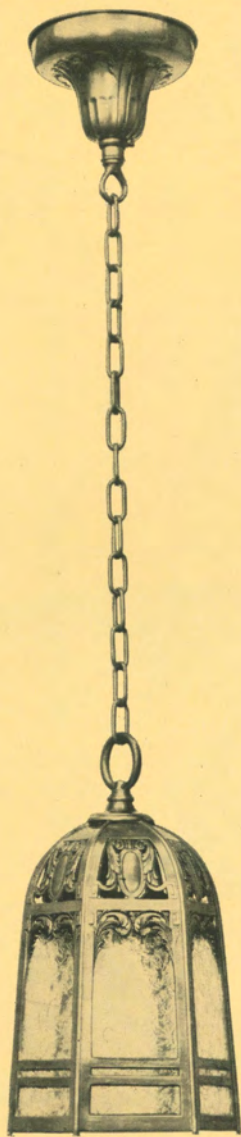
**Old Brass and Black.
Satin Brown and Gold.
Satin Gray and Gold.
White Enamel.**

No. G 150

3¼ inch Holder.

**Black Iron.
Bright Copper.
Verde Antique.**





No. G 103

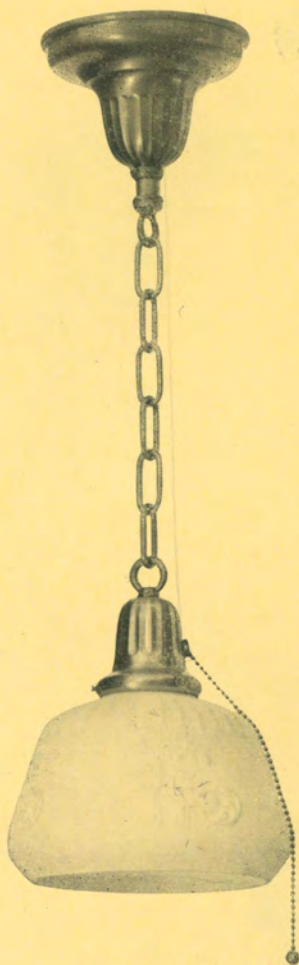
Length, 36 inches. Diameter, $7\frac{1}{4}$ inches.

Crystal Chipped Glass Panels.

Old Brass and Black.

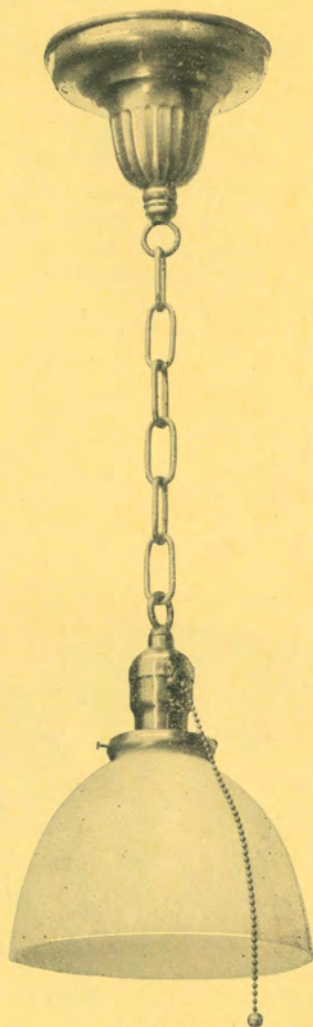
Satin Brown and Gold.

Satin Gray and Gold.



No. G 129

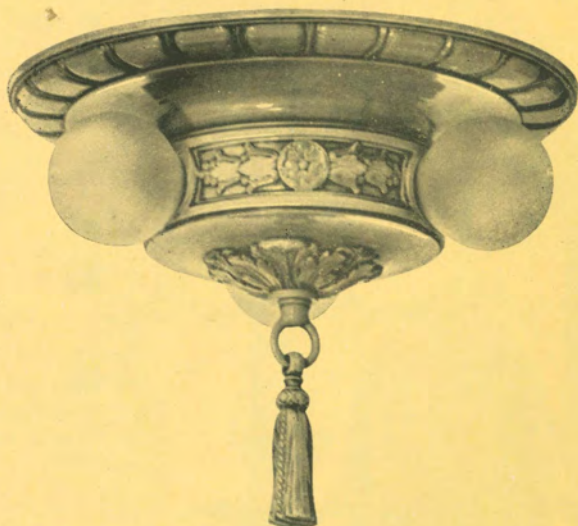
Length, 36 inches.
Old Brass and Black.
Satin Brown and Gold.
Old Ivory and Gold.



No. G 105

Length, 36 inches.
Dull Brass.
White Enamel.

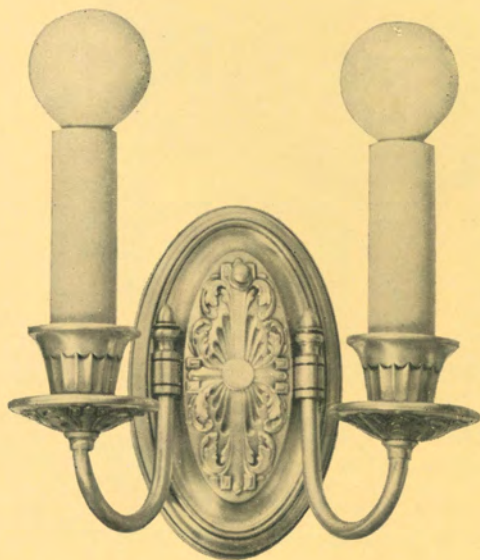
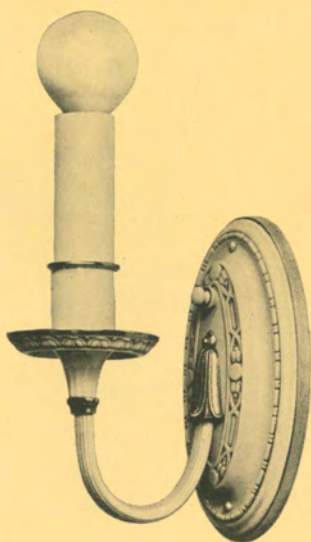
No. G 106
Projection, 5½ inches.
Dull Brass.
White Enamel.



No. G 125
Length, 8 inches. Spread, 10 inches.
Old Ivory and Polychrome.

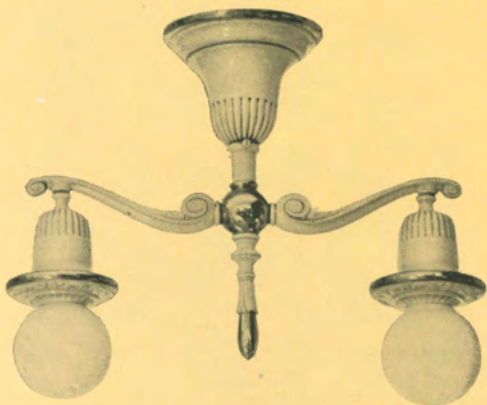
No. G 128

Projection, $4\frac{3}{4}$ inches.
Colonial Brass and Black.
Old Ivory and Gold.
Silver and Brown.

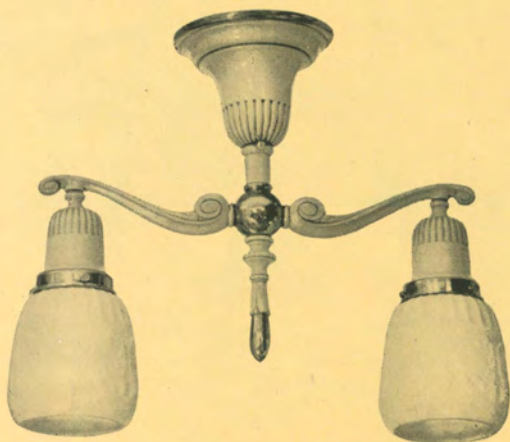


No. G 123

Projection, $3\frac{1}{2}$ inches.
Spread, $6\frac{1}{2}$ inches.
Old Brass and Black.
Satin Brown and Gold.
Silver and Black.



No. G 126, with No. 621 ball lamp adaptors.
Length, 11 inches. Spread, 12 inches.
Old Ivory and Gold.

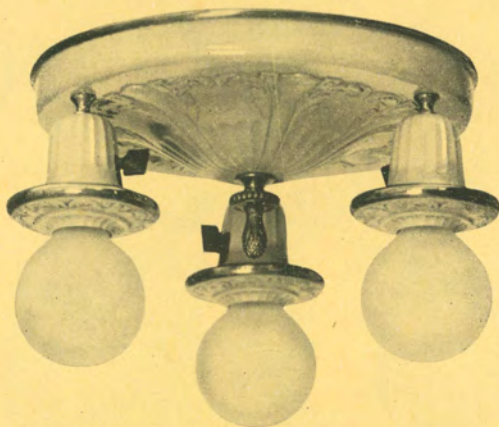


No. G 126
Length, 11 inches. Spread, 12 inches.
Old Ivory and Gold.



No. G 148

Diameter, 11 inches.
Old Brass and Black.
Satin Brown and Gold.
Old Ivory and Gold.



No. G 148 with No. 621 ball lamp adaptors.

Diameter, 11 inches.
Old Brass and Black.
Satin Brown and Gold.
Old Ivory and Gold.

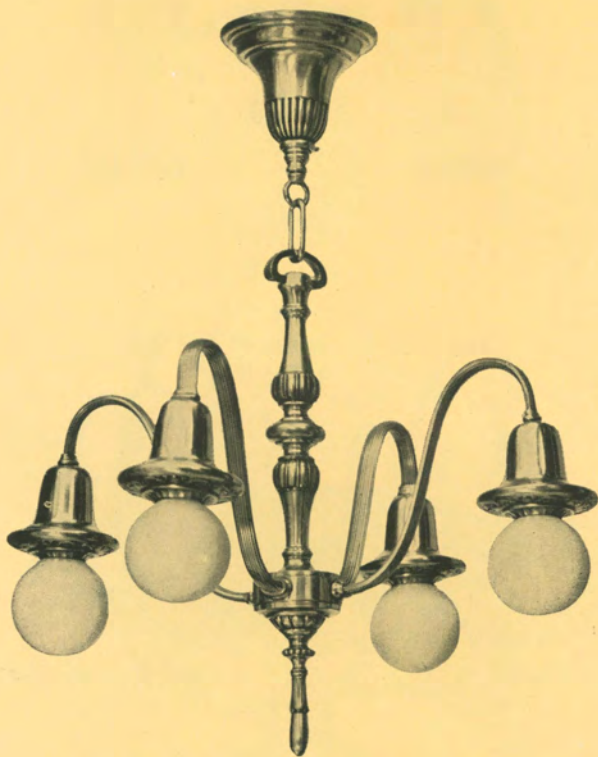


No. G 127

Length, 23 inches. Spread, 16 inches.

Colonial Brass and Black.

Silver and Brown.

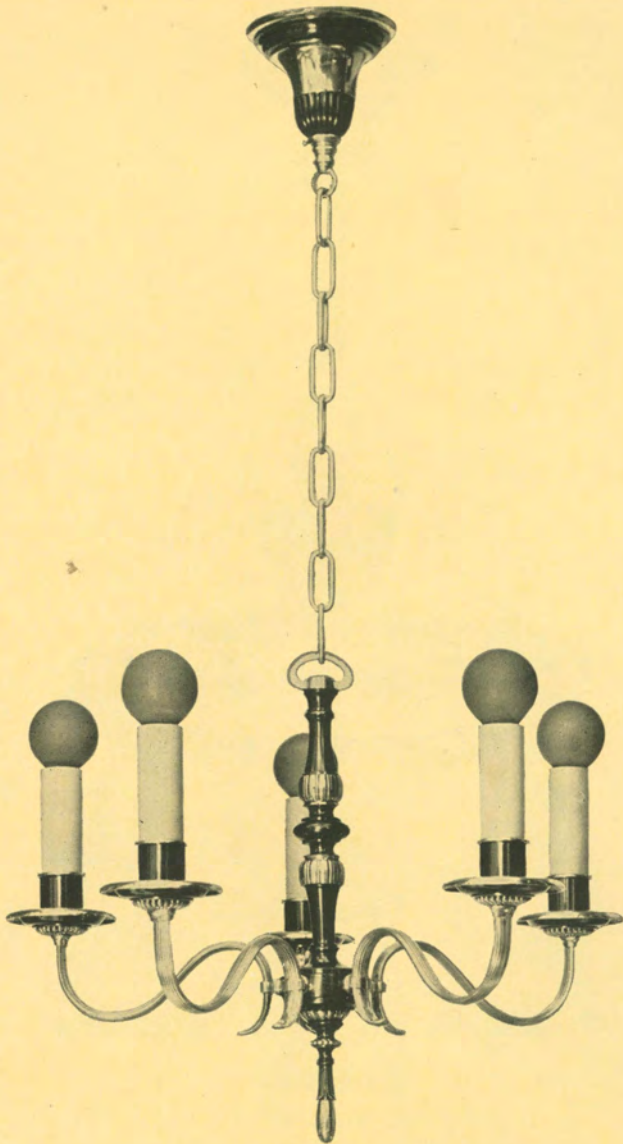


No. G 127 with No. 631 ball lamp adaptors.

Length, 23 inches. Spread, 16 inches.

Colonial Brass and Black.

Silver and Brown.

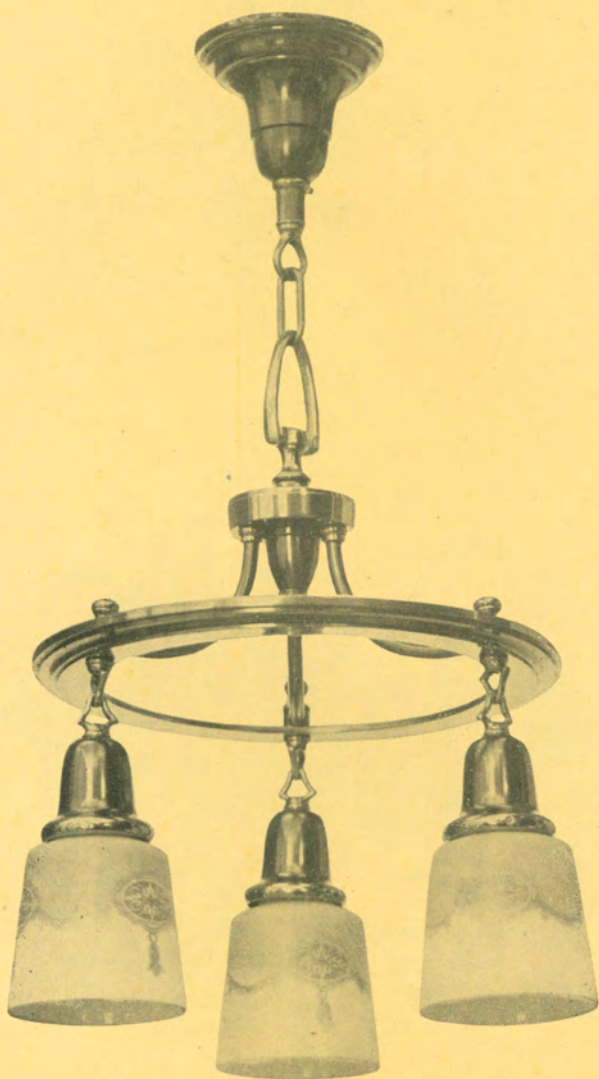


No. G 130

Length, 36 inches. Spread, 18 inches.

Colonial Brass and Black.

Silver and Brown.

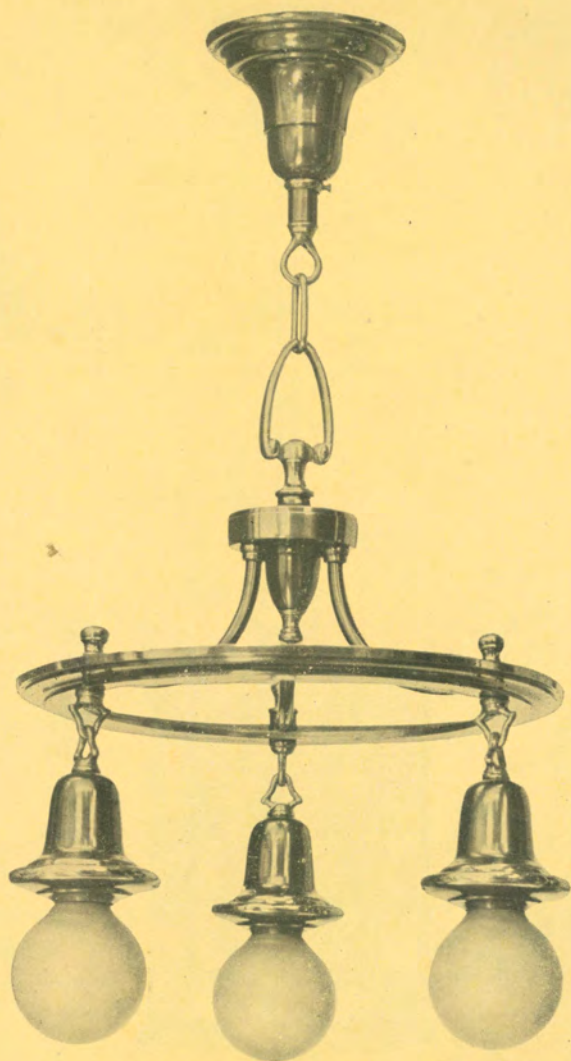


No. G 131

Length, 25 inches. Diameter, 13 inches.

Colonial Brass.

Venetian and Gold.

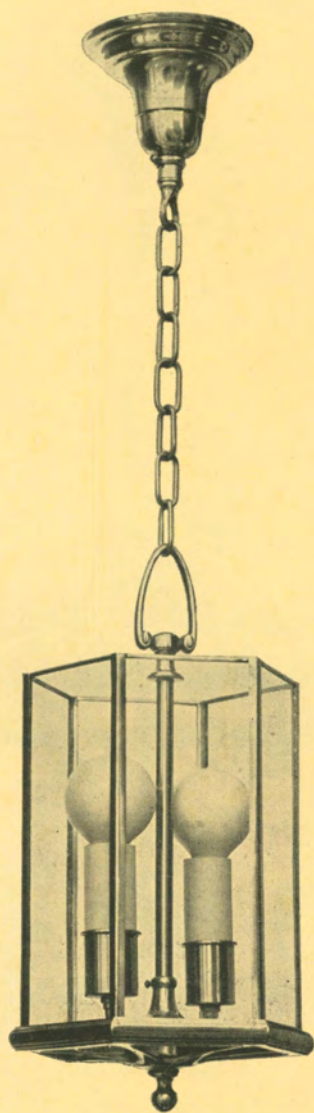


No. G 131 with No. 631 ball lamp adaptors.

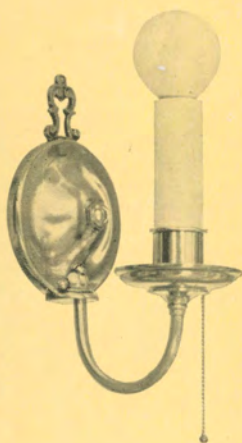
Length, 25 inches. Diameter, 13 inches.

Colonial Brass.

Venetian and Gold.



No. G 132
Length, 36 inches.
Colonial Brass.
Bronze.



No. G 156

Projection, $4\frac{1}{4}$ inches.

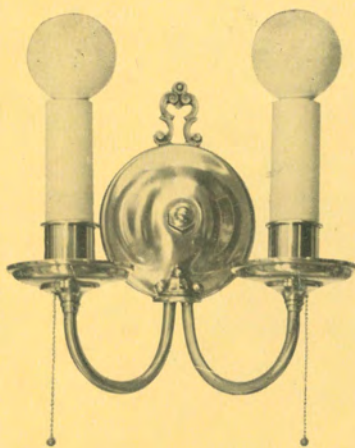
Colonial Brass.
Silver and Black.

No. G 133

Projection, 3 inches.

Spread, 6 inches.

Colonial Brass.
Silver and Black.





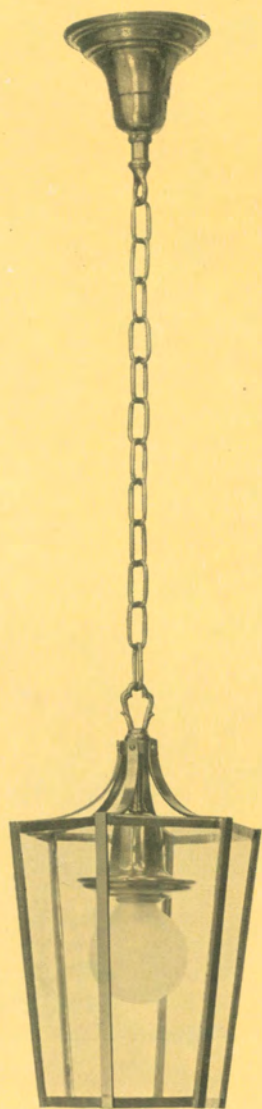
No. G 134

Length, 22 inches. Spread, 15 inches.

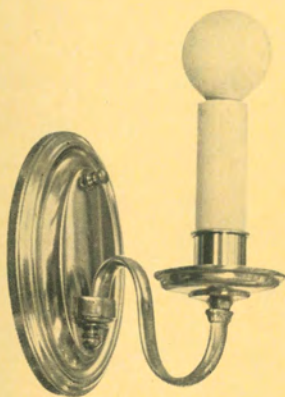
Colonial Brass and Black.



No. G 134 with No. 631 ball lamp adaptors.
Length, 22 inches. Spread, 15 inches.
Colonial Brass and Black.

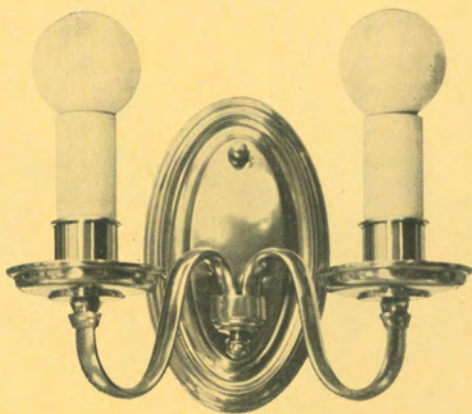


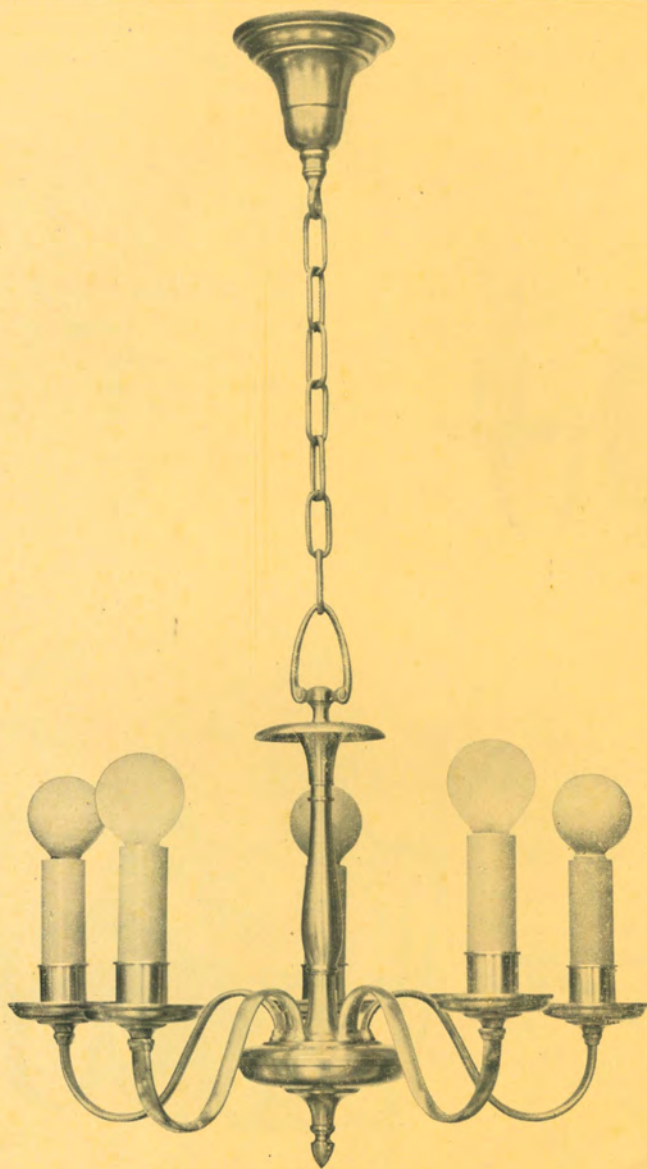
No. G 135
Length, 36 inches.
Colonial Brass.
Bronze.



No. G 155
Projection, 5½ inches.
Colonial Brass.
Silver and Black.

No. G 136
Projection, 4½ inches.
Spread, 7 inches.
Colonial Brass.
Silver and Black.



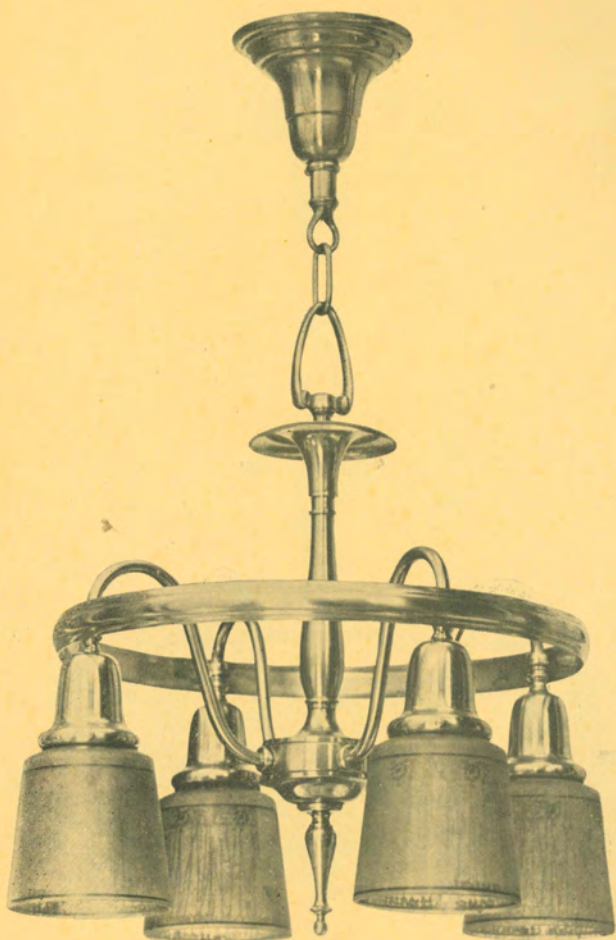


No. G 137

Length, 36 inches. Spread, 16 inches.

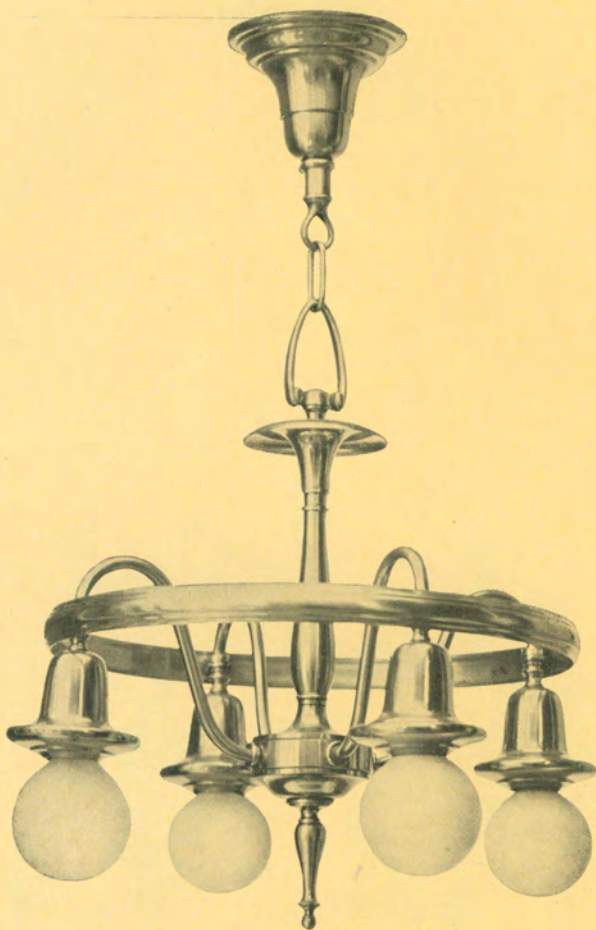
Colonial Brass.

Silver and Black.

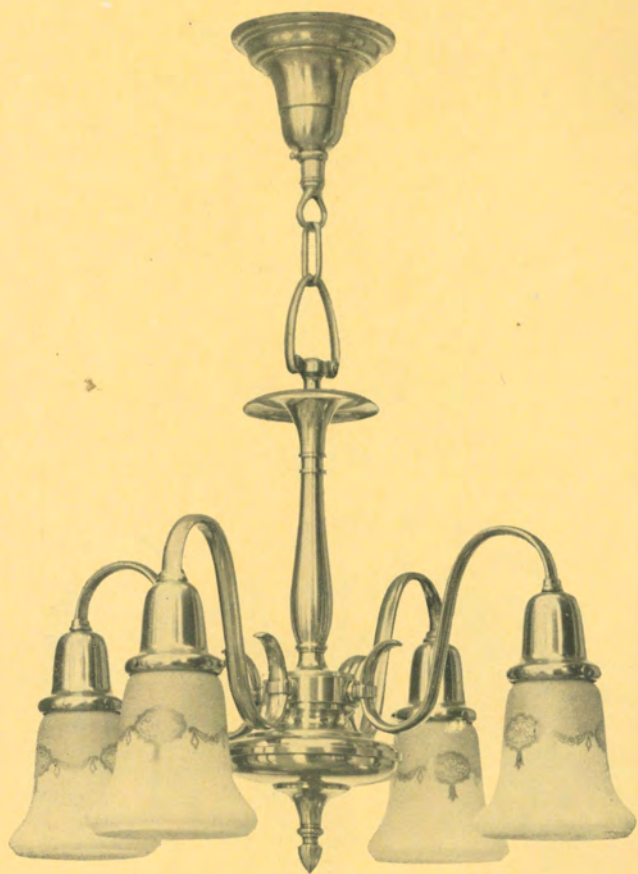


No. G 138

Length, 25 inches. Spread, 14 inches.
Colonial Brass.



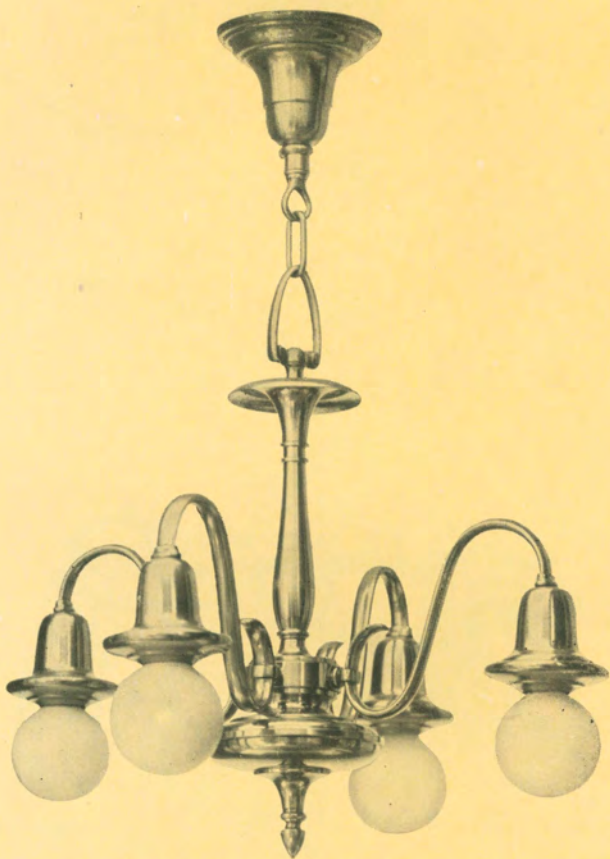
No. G 138 with No. 631 ball lamp adaptors.
Length, 25 inches. Spread, 14 inches.
Colonial Brass.



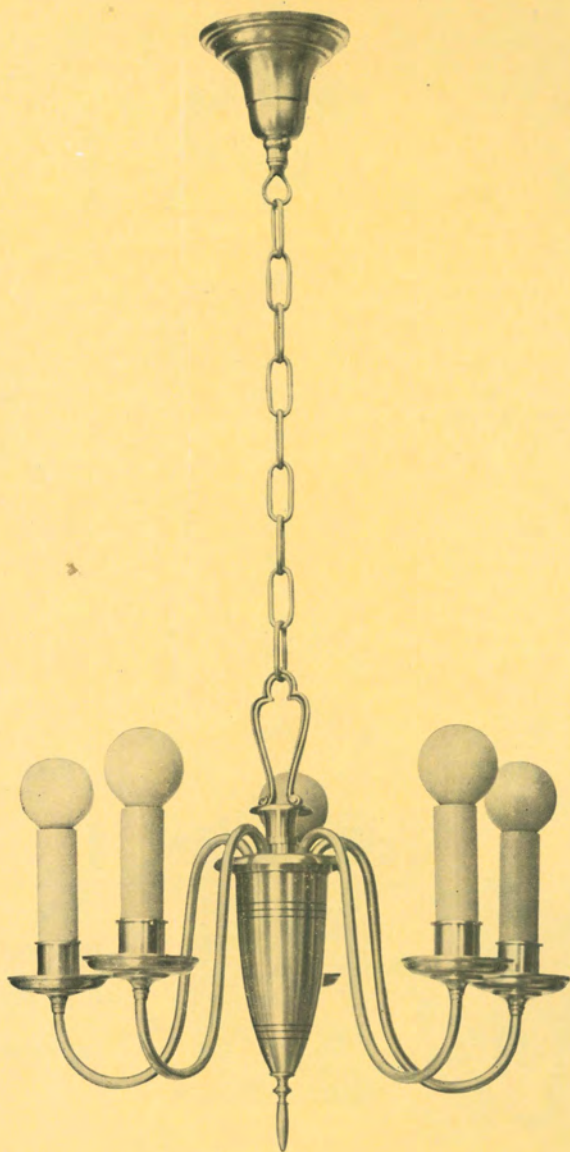
No. G 139

Length, 25 inches. Spread, 16 inches.

Colonial Brass and Black.



No. G 139 with No. 631 ball lamp adaptors.
Length, 25 inches. Spread, 16 inches.
Colonial Brass and Black.

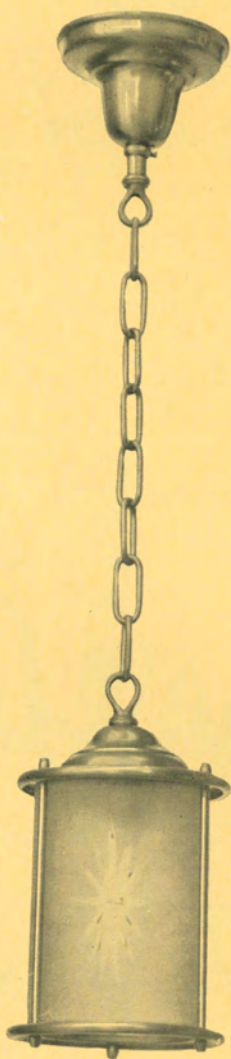


No. G 140

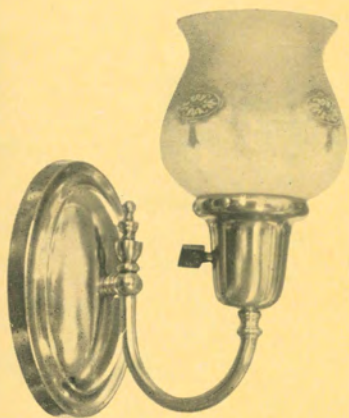
Length, 36 inches. Spread, 16 inches.

Colonial Brass and Black.

Silver and Black.



No. G 149
Length, 30 inches.
Old Brass.



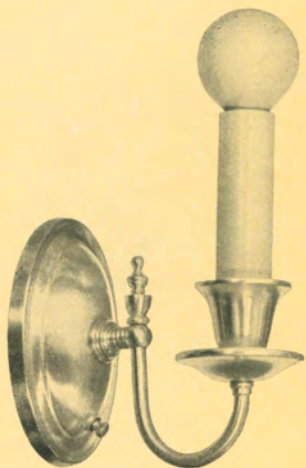
No. G 151

Projection, $5\frac{1}{2}$ inches.
Colonial Brass.
Silver and Black.
Venetian and Gold.



No. G 154

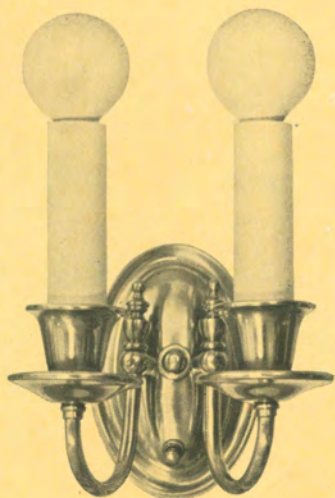
Projection, $4\frac{3}{4}$ inches.
Spread, $5\frac{3}{4}$ inches.
Colonial Brass.
Silver and Black.
Venetian and Gold.



No. G 153

Projection, $5\frac{1}{2}$ inches.

Colonial Brass.
Silver and Black.



No. G 152

Projection, $4\frac{1}{4}$ inches.

Spread, $4\frac{3}{4}$ inches.

Colonial Brass.
Silver and Black.

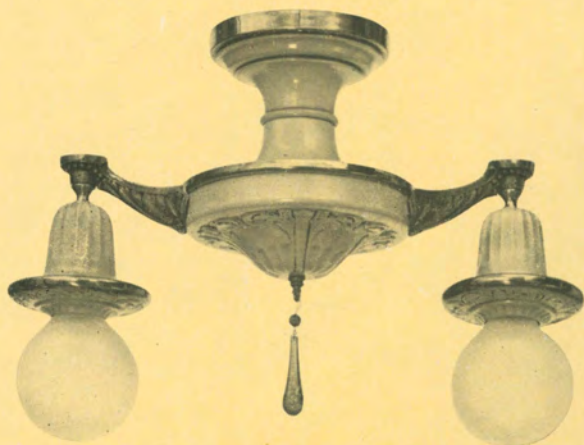


No. G 157

Length, $10\frac{1}{2}$ inches. Spread, 11 inches.

Satin Brown and Gold.

Old Ivory and Gold.



No. G 157 with No. 621 ball lamp adaptors.

Length, $10\frac{1}{2}$ inches. Spread, 11 inches.

Satin Brown and Gold.

Old Ivory and Gold.



No. G 159

Length, 14 inches.

Spread, 11 inches.

Satin Brown and Gold.
Old Ivory and Gold.

No. G 159 with No. 621

ball lamp adaptors

Length, 14 inches.

Spread, 11 inches.

Satin Brown and Gold.
Old Ivory and Gold.



1997.140