

For any occasion



Manning-Bowman
ELECTRIC APPLIANCES



INDEX

ARTICLE	Page	ARTICLE	Page
Bottle Warmer	31	Table Grills	7-9
Buffet Servers	29, 30	Terms	Third Cover
Coffee Services	14-16	Toasters (automatic)	19, 20
Cord Sets	32	Toasters (non-automatic)	21, 22
Egg Cooker	31	Toaster Service	20
Flatirons (automatic)	24, 25	Underwriters' Laboratories, Inc.	Third Cover
Flatirons (non-automatic)	26, 27	Urns	13-16
Guarantee	Third Cover	Voltage Information	Third Cover
Glass Coffee Makers	17, 18	Waffle Bakers (automatic)	1, 3, 5
Heaters	28	Waffle Bakers (non-automatic)	2, 4, 6
Heating Pads	10, 11	Waffle Bakers (twin-type)	1-4
Percolators	12, 13	Warming Oven	30
Service Stations	Third Cover		

MANNING, BOWMAN & CO., Meriden, Connecticut

NEW YORK
200 FIFTH AVE.

CHICAGO
MERCHANDISE MART

SAN FRANCISCO
150 POST ST.



THESE
FEATURES

THE TWIN-O-MATIC

(Trade-Mark)

6060 Automatic Waffle Baker
Patented

Watts 1000

Shipping Weight 10½ lbs.

Standard Package 3

Waffles—two at a time—automatically—in the same space and the same time that it takes to bake one the old way. Now every one at the table can eat hot waffles at the same time.

Simple operation: Pour waffle batter into top section—close cover. Then reverse baker and pour waffle batter into other section. Sensitive waffle dial allows "tuning in" on any kind of waffle from Light to Dark. A convenient bake indicator in the top tells when to put in the batter.

Two sets of deep, clean-cut aluminum 7-inch diameter baking grids insure thick, light waffles. Wide batter troughs catch all excess batter from both upper and lower sections.

Beautiful non-tarnishing chromium finish with rich walnut bakelite mounts. Overall size: 6¾ inches high; 12 inches in diameter. For use on A.C. (alternating current) only.



A sensitive instrument, the waffle dial allows a wide selection of waffle textures to satisfy varied tastes.



Wide batter troughs catch all excess batter from both upper and lower sections.



Top section of the Twin-over waffle baker ready for the waffle batter.



Reversing the Twinover waffle baker for baking the second waffle.

THE TWINOVER

(Registered Trade-Mark)

5050 Waffle Baker
Patented

Watts 825

Standard Package 3

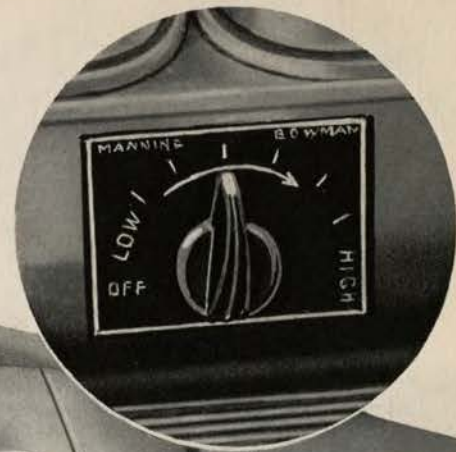
Shipping Weight 10 lbs.

And here is the non-automatic version of the Twin-O-Matic, America's most talked of waffle baker. The Twinover bakes two full size appetizing waffles at once in the same time it takes to bake one in the ordinary baker.

It occupies no more table space than the ordinary waffle baker and is as simple to operate: Pour waffle batter in top section—close cover. Then reverse baker and pour waffle batter into other section. The two sets of deep clean-cut aluminum grids, equipped with highest quality nichrome elements, insure thick light waffles.

This double-duty iron is finished in chromium plate and mounted with brown bakelite. The handle support is flattened top and bottom to keep the waffle baker always in an upright baking position. A sensitive bake indicator in the top tells when to put in the batter and warns user if he permits the baker to get too hot. Overall size: 6¾ inches high; 12 inches in diameter.

It's automatic. Just set the control to bake the kind of waffles you like.



Bakes two at a time. No one has to wait. Appetizing waffles for everyone at once.

THE JUBILEE

2626 Twin Automatic Waffle Baker
Patented

Watts 725

Standard Package 3

Shipping Weight 8 lbs.

Bakes two waffles side by side automatically. Waffles without waiting. And good big ones too—5½ inches square. The Jubilee is just the thing for waffle parties of all kinds.

Easy to operate: simply set the control and pour in the batter. The automatic device shuts the current off when the waffles are done the way you want them. Each cover has a heat indicator to tell when to put the batter in. With such simplicity of operation and automatic convenience, serving waffles is an appetizing pleasure.

Both sets of grids are deep, clean-cut aluminum and equipped with expanding hinges—assuring thick, light waffles. Base of the waffle baker forms a tray that catches excess batter.

A member of the new Jubilee pattern of matched appliances, the "Twin" is chromium-plated and trimmed with stunning ivory Arinite. Overall size: 14 inches long, 8¾ inches wide, and 4¼ inches high. For use on A. C. (alternating current) only.



The "Twin" bakes two delicious crunchy waffles at once. "Just the thing" for popular luncheons, Sunday night suppers, after-theatre snacks.

THE PIONEER

2525 Twin Waffle Baker
Patented

Watts 600

Shipping Weight 8 lbs.

Standard Package 3

Manning-Bowman's "Twin" is a compact efficient appointment that bakes twin waffle servings quickly and to a turn. The single base with its dual covers makes for faster, more economical waffle baking and also makes the "Twin" especially handy to use.

The aluminum baking grids are good size, $5\frac{1}{2}$ inches square, and the back of each cover has a special expanding hinge that insures light, well-cooked waffles. The bottom tray is designed to catch any slight overflow of batter.

The "Twin" provides adequate servings for popular luncheons and Sunday night suppers of delicious waffles. It matches other appliances in the Pioneer Pattern and is chromium finished with solid walnut trimmings. Overall size: 14 inches long, $8\frac{3}{4}$ inches wide, and $4\frac{1}{4}$ inches high.



THE PURITAN

1655 Automatic Waffle Baker
Patented

Watts 800

Shipping Weight 7 lbs.

Standard Package 3

Tune in on waffles at their best with the new dial control. Including "Dark", "Light" and "Off", seven positions are clearly marked on the bakelite control dial.

In the center of the dial is a sensitive heat indicator that tells when the baker is at baking temperature and ready for the batter. The little signal light in the foreground tells when the waffle is thoroughly baked in accordance with the selection made on the dial.

Deep 7-inch aluminum grids. Batter trough and expanding hinges. A. C. (alternating current) only. Chromium and walnut.



THE WAFFLE DIAL
Setting the dial bakes waffles to suit the taste.

THE TRIUMPH

1657 Automatic Waffle Baker
Patented

Watts 800

Shipping Weight 7 lbs.

Standard Package 3

The Triumph cannot be surpassed for beauty and automatic waffle baking ability. A small light in the cover indicates when the iron is at the proper "baking" temperature and—after the batter has been poured in—also tells when the waffle is done. By merely setting the lever on the "Light-Dark" scale, waffles may be baked lighter or darker as preferred and the electric current automatically shuts off when the waffle is baked.

The aluminum grids are full 7 inches in diameter and a special trough on the lower grid catches any surplus batter. An expanding hinge at the back assures light delicious waffles. Finished in Manning-Bowman fine chromium with walnut trimmings. For use on A. C. (alternating current) only.



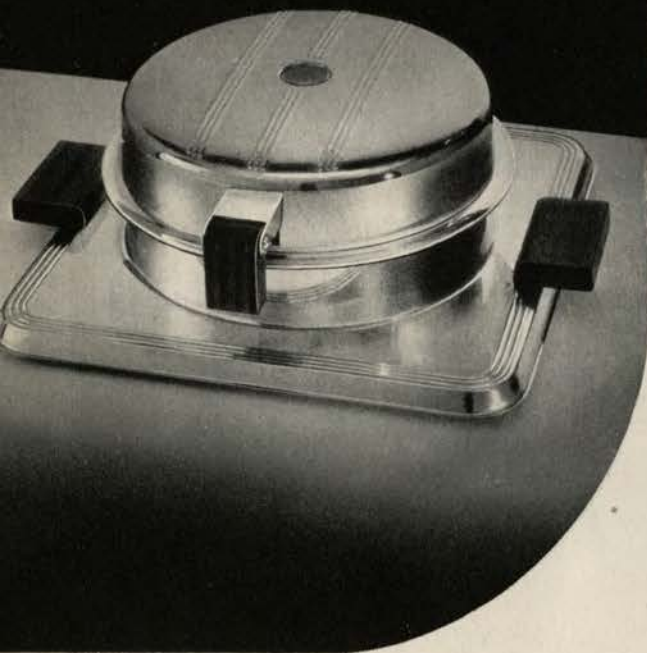
THE PIONEER

1652 Waffle Baker
Patented

Watts 660 Shipping Weight 6½ lbs.
Standard Package 6

The circular design of the waffle baker proper blends harmoniously with the distinctive square base to make the Pioneer one of today's smartest electric appointments.

Finished in Manning-Bowman's superior, non-tarnishing lustrous chromium plate with genuine solid walnut handles. The deep, clean-cut waffle grids are full size seven inches in diameter. The expanding hinge at the back insures light waffles while a wide batter trough on the lower grid takes care of any slight overflow. A small sensitive heat indicator in the cover tells when to put in the batter and warns the user if the baker is permitted to get too hot,



THE TRIUMPH

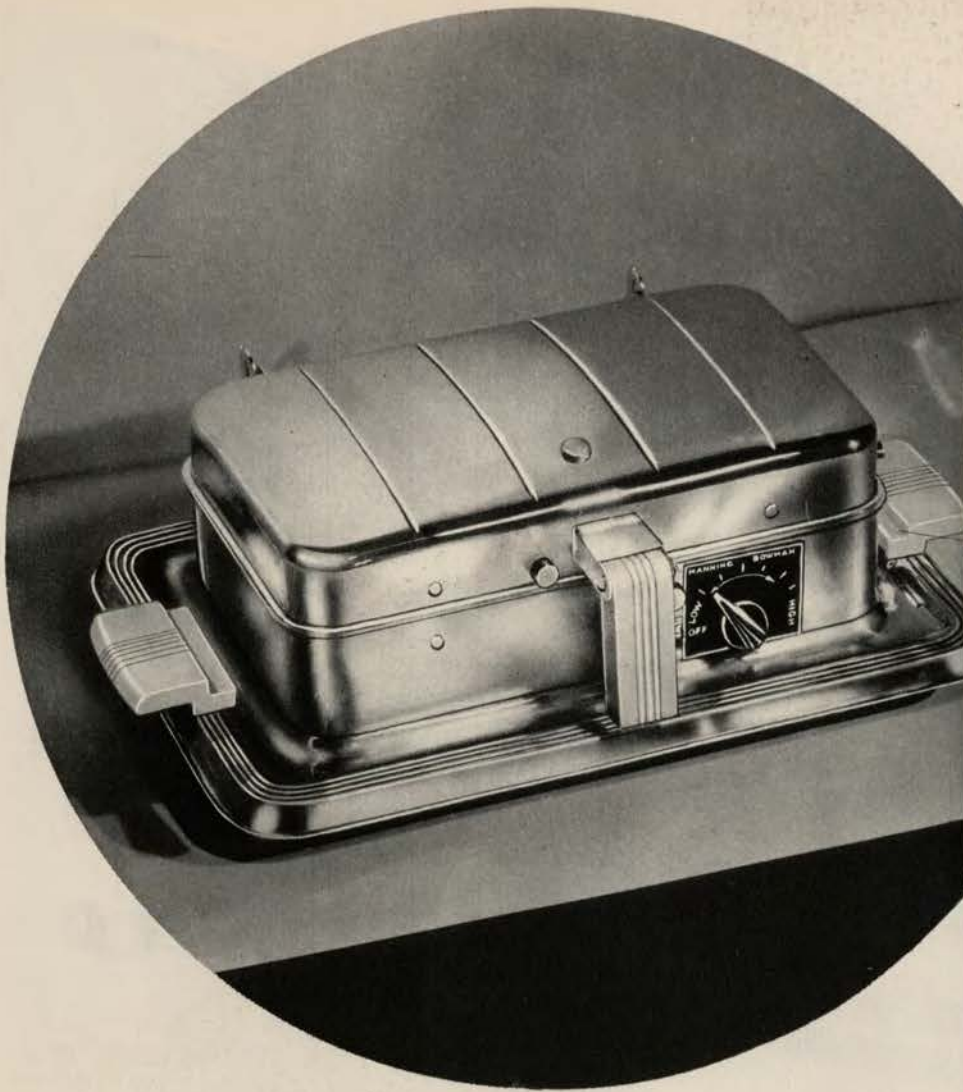
1656 Waffle Baker
Patented

Watts 660 Shipping Weight 7 lbs.
Standard Package 6

This waffle baker with simple circular design and solid walnut trim will ever be in good taste. Another achievement in fine design by Manning-Bowman. The temperature indicator in the top shows when the baker is ready to bake and a batter trough on the lower grid prevents excess batter from running over the baker onto the base.

Large 7-inch aluminum grids and expanding hinge assure light, golden-brown, crispy, delicious waffles. Finished in mirror-like chromium finish and walnut handles of generous proportions. Moderately priced to make it a truly outstanding value.





THESE FEATURES



The control does it. Simply set it for the job to be done. There's a setting for everything from baking to boiling.

THE JUBILEE

402 Automatic Table Grill Only

Shipping Weight 8 lbs.

412 Combination Automatic Grill-Waffle Baker-Frying Pan

Shipping Weight 12 lbs.

Watts 800

Standard Package 3

Set the control for the job to be done. At one heat the Jubilee toasts two full-size sandwiches to the taste; at another heat four pancakes are quickly baked at one time. There's a different heat for grilling rare, medium and well done steaks and chops. With the interchangeable waffle grids one setting results in crisp and crunchy brown waffles while another produces a lighter texture. By inserting the frying pan attachment and setting the control—eggs and bacon, sausage, frankforts or anything else may be fried. Cover eliminates spattering.

The little signal light in the cover glows when the current is on—fades when the automatic device shuts the current off. A constant guide to accurate cookery.

A member of the Jubilee pattern of matched appliances in chromium plate and ivory Arinite trim. Overall dimensions are 14 inches long, 8¾ inches wide and 4 inches high. Frying pan is 1 inch deep. Equipped with grease drain, expanding hinges and a notch to hold cooker in open position. For use on A. C. (alternating current) only.



No. 12 frying pan attachment is one inch deep and is interchangeable with lower cooking grid. Top grid serves as cover. Shipping weight 1 lb.



No. 10 interchangeable waffle grids easily substituted for upper and lower cooking grids. Shipping weight 3 lbs.



No. 10 Waffle grids are interchangeable with the upper and lower cooking grids. Shipping weight 3 lbs.



THE TRIUMPH

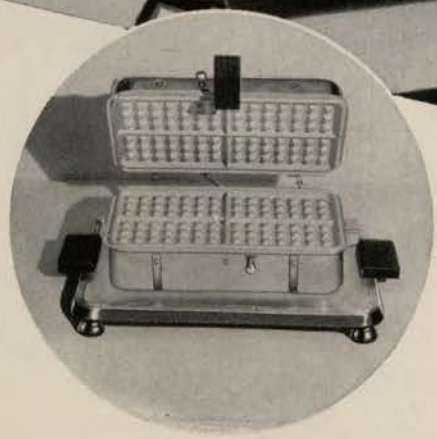
401 Table Grill Only
411 Table Grill-Waffle Baker
Watts 675

Shipping Weight 8 lbs.
Shipping Weight 11 lbs.
Standard Package 3

A joy to the hostess. This deluxe table grill enables her to prepare all kinds of delightful snacks right there at the table without leaving the guests for a moment. Sausages, bacon, chops, steaks can be broiled. Pancakes baked. Ham grilled. Sandwiches toasted. Eggs can be fried. By substituting the waffle grids for the cooking plates, waffles can be baked.

To save valuable meat juices for gravies and sauces, the lower cooking plate is notched with a convenient grease drain. Expanding hinges accommodate foods of all thicknesses and are notched to keep the cooker in the open position when necessary.

Triumph Pattern design in chromium plate with walnut wood trim to contrast. Overall dimensions: 14 inches long, 8 $\frac{3}{4}$ inches wide, 5 $\frac{3}{4}$ inches high. Both sets of grids are 9 $\frac{3}{4}$ inches by 5 $\frac{3}{4}$ inches.



No. 10 Waffle Grids. The Pioneer may be purchased with these interchangeable waffle grids.

THE PIONEER

400 Table Grill Only

Shipping Weight 8 lbs.

410 Combination Table Grill-Waffle Baker

Shipping Weight 11 lbs.

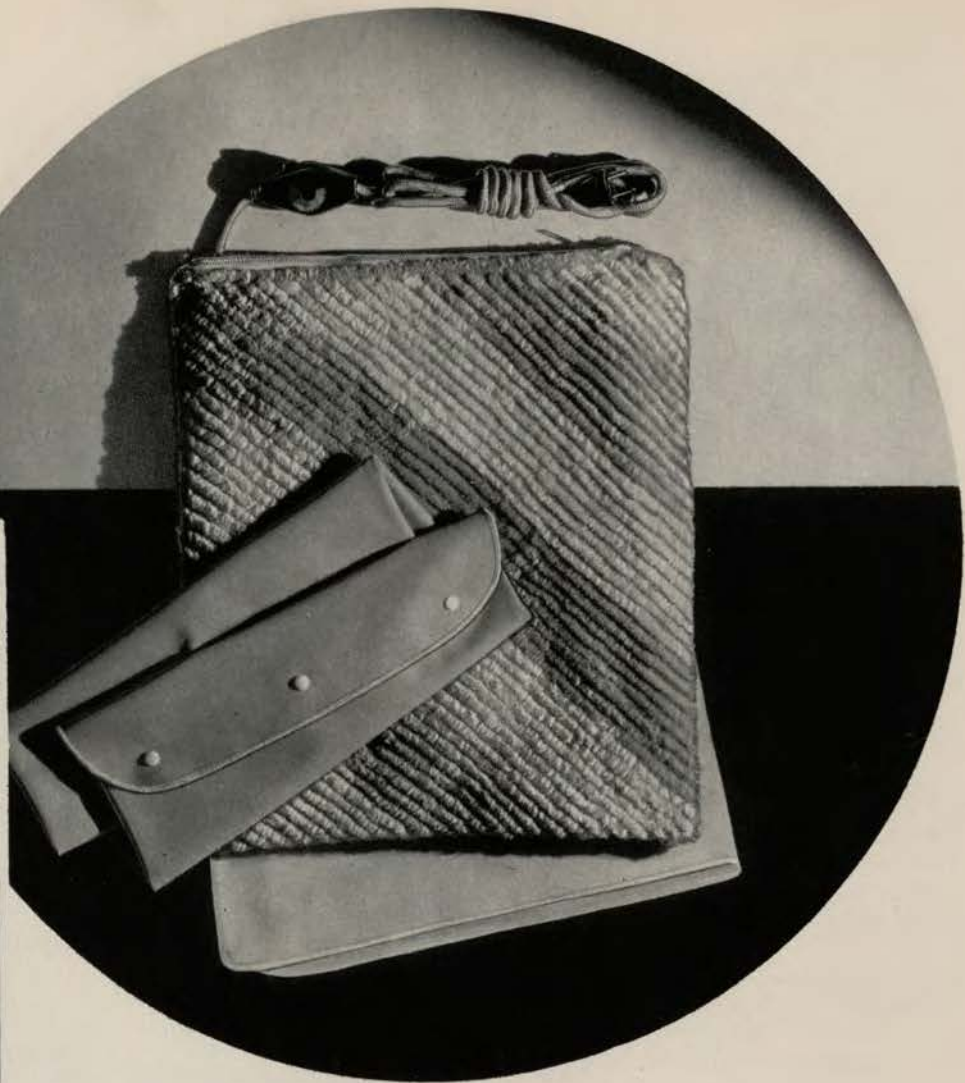
Watts 675

Standard Package 3

The Pioneer fills that ever growing popular demand for a moderately priced Table Grill. It will toast two full size sandwiches, fry bacon and eggs, chops or even a small steak; bake four pancakes at a time, and, by inserting the interchangeable waffle grids, bake four crispy delicious waffles. It's a prominent member of the ultra-smart Pioneer Pattern of Matched Appliances too, with its beautiful chromium finish and solid walnut trimmings.

A grease drain is notched in the lower cooking grid and a convenient grease pan is supplied with each table grill. Both lower and upper cooking grids of aluminum are large size $9\frac{3}{4}$ inches by $5\frac{3}{4}$ inches. A special device in the two hinges holds the upper part of the table grill in a convenient open position. Overall dimensions are 14 inches long, $8\frac{3}{4}$ inches wide and 4 inches high.

THESE FEATURES



THE SAN CARLOS

Watts 65
1692/1 Apricot and Peach
Shipping Weight 2 lbs.
Standard Package 3

To the comforting warmth and utmost safety of all Manning-Bowman heating pads the San Carlos adds the luxury of an exquisite two-toned chenille cover with alternate diagonal bands of delicate apricot and peach shades. Has waterproof rubber envelope.

HEATING PAD SPECIFICATIONS

The San Carlos heating pad has four thermostats. One thermostat is set to maintain a low inside temperature of 125-135 degrees Fahrenheit; a second thermostat a medium inside temperature of 150-160 degrees Fahrenheit; the other two thermostats are set to maintain a high inside temperature of 180-190 degrees Fahrenheit. Each of the last two thermostats acts as a check on the other to prevent overheating.

All other Manning-Bowman heating pads operate on 25, 40 and 65 Watts for low, medium and high degrees of warmth.

All Manning-Bowman pads have the following specifications. Complete Underwriter listing. Three-heat switch in 10-foot cord allows convenient changing from one warmth to another. Thermostatically protected against overheating. Durable nichrome element is wound on pliable asbestos core. Wound unit is then covered with three braids of asbestos yarn for completely safe insulation. Heating element strands scientifically spaced for perfect heat distribution. Durable, accurate thermostats assure long life and body-fit flexibility. Muslin slip cover for protection against soiling. All pads are non-radio-interfering. Full size 12 x 15 inches. Folded to 12 inches by 7½ inches and packed in individual half-size display containers.

By zipping the metal slide fastener the chenille cover is easily removed for washing or—in case of infectious diseases—for boiling.



Folded and packed in a deluxe half size display container. Boxes for other Manning-Bowman pads are the same convenient size but differ slightly in design.

THE CARLSBAD

1697/2 Green

Watts 65 Shipping Weight 2 lbs.

Standard Package 2

This attractive pad features a removable eiderdown cover the inside surface of which is rubberized to make it waterproof. This feature insures the user complete safety at all times.



Snap fasteners make it easy to remove the rubberized cover for washing.

THE BIARRITZ

1698/7 Cedar and Peach

Watts 65 Shipping Weight 2 lbs.

Standard Package 2

The Biarritz is really two pads in appearance. Its luxuriant, soft eiderdown cover is cedar in color on one side and on the other it's peach. An attractive design is impressed in the fabric. Has waterproof rubber envelope.



THE SAN REMO

1699/1 Dusty Rose, Coral, White

Watts 65 Shipping Weight 2 lbs.

Standard Package 2

The center coral band of the San Remo's rich chenille cover is flanked by thin stripes of dusty rose and white and broad bands of dusty rose. Has waterproof rubber envelope.



By unfastening these snaps the chenille cover is easily removed for washing or boiling.

THE COURTIER SERIES

397/4 Four Cup Size

Patented

Height 9½ inches

Watts 350

397/7 Seven Cup Size

Patented

Height 11 inches

Standard Package 3

397/9 Nine Cup Size

Patented

Height 11¾ inches

Shipping Weight 5 lbs.

Every home has its individual coffee problem—now, the four cup size Courtier satisfies the needs of the family of two or three; the seven-cup size, the family of four or five; and the nine-cup size Courtier the large family.

Appealing simplicity of design, exacting workmanship, and finest quality materials are instantly recognized in this three capacity series and for these reasons each is an especially fine value at the price. The lustrous chromium finish that will never tarnish reflects most interestingly the entire table setting in the percolator's rounded contours. The wood handle is rich solid walnut.

Each is identical in construction, having a protective fuse-link device that prevents overheating; and a long life nichrome wound mica heating element; heavy copper body; and dripless spout.



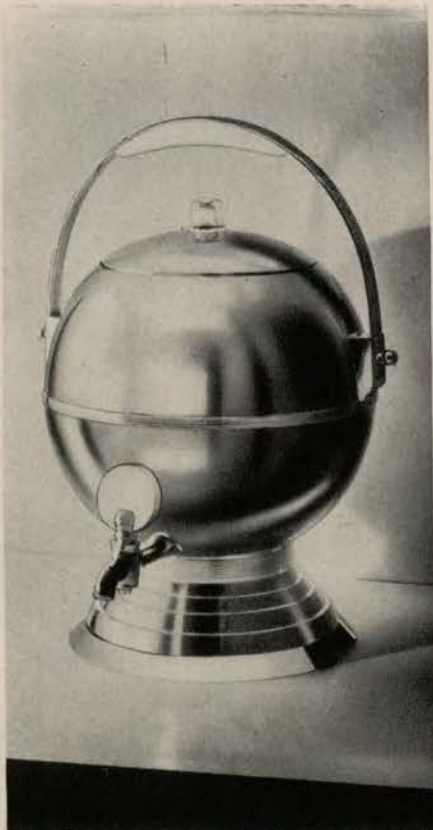
THE JUBILEE

494/20 Party Urn
Patented

Watts 350 Shipping Weight 7 lbs.
Standard Package 1

An exceptionally beautiful coffee urn for either making or serving coffee for the larger parties. It makes twenty cups of coffee or the inside parts may be removed and the urn used as a serving piece only, in which case it will hold 28 cups. The simple design and ivory Arinite trim contrasting with the gleaming chromium identify the urn as a member of the Jubilee pattern of matched appliances.

The urn is 14 inches high, with heavy copper body, chromium lining, nichrome wound mica unit. Protected against overheating with thermostatic control. For use on A. C. (alternating current) only.



THE PURITAN

394/6W Percolator
Patented

Watts 350 Shipping Weight 5 lbs.
Standard Package 3

The smartest table will be all the more appealing with the Puritan percolator. Simple in design—with just enough decoration. It has all the superior features that distinguish Manning-Bowman percolators.

Finished in chromium plate—capacity six full size cups. Seamless copper body—inset terminal guard—dripless pouring lip—equipped with a durable nichrome wound mica heating unit—aluminum inserts—protective fuse-link device that prevents over-heating. Height, 9½ inches. Graceful solid walnut handle.



THE PLYMOUTH

398/7 Percolator
Patented

Watts 350 Shipping Weight 5 lbs.
Standard Package 3

For those who admire the grace and charm of a more conventional design, the Plymouth is especially appealing. Finished in lustrous, non-tarnishing chromium plate which contrasts with walnut wood handle.

Capacity of seven six-ounce cups. Equipped with all the regular Manning-Bowman features. All inside parts are of commercially pure aluminum while the lining is easy-to-clean dull chromium. The heating element is a highest quality durable, nichrome wound mica unit protected against overheating by the Manning-Bowman fuse-link device. Seamless body of heavy copper. Height 10¾ inches.



THE PIONEER

4830/9 Service
Patented

Urn (capacity 9 cups)	483/9
Sugar and Creamer	146
Tray	4819
Watts 350	Shipping Weight 15 lbs.
	Standard Package 1

Straight lines subtly relieved by narrow circular bands is the Pioneer design which has been so enthusiastically approved by the most fastidious. Nine cups is the capacity of the urn. Both sugar and creamer are chromium lined—the sugar has two metal handles and a cover surmounted with a walnut knob while the creamer has a neat dripless pouring spout and one metal handle. The tray, too, has full width walnut handles.

Seamless copper urn; protective fuse-link device; dripless type faucet; nichrome wound mica heating element. Urn is 12¾ inches high while the tray is 19¼ inches long and 7¾ inches wide.



THE PURITAN

4850/8B Service
Patented

Urn (capacity 8 cups)	485/8B
Sugar and Creamer	147B
Tray	4919B
Watts 350	Shipping Weight 10 lbs.
	Standard Package 1

An urn set of outstanding value. Its modern design, circular line relief and lustrous finish, must be seen to be appreciated. The trimmings are black ebonized wood. Sugar and creamer nicely complement the lines of the urn and like the urn are chromium lined. The oblong tray has generous sized carrying handles and may be used as an informal serving piece.

Urn is 12 inches high, with seamless copper body, nichrome wound mica heating unit, protective fuse device and dripless faucet. The tray is 19¾ inches long and 7¾ inches wide overall.





THE HARMONY

4920/12 Service
Patented

Urn (capacity 12 cups)	492/12
Sugar and Creamer	1152
Tray	5120

Watts 350
Standard Package 1
Shipping Weight 15 lbs.

The spherical design of the "Harmony" sets it apart as the smartest coffee service. And—in addition to percolating finer coffee it may also be used as a coffee server simply by removing the inside parts. The urn will percolate twelve cups of coffee, or when used as a server, with inside parts removed, holds sixteen cups.

The body of the urn is of heavy seamless copper and is equipped with a nichrome wound mica unit, protected against overheating by a thermostatic device. It is 13 inches high and is equipped with commercially pure aluminum inside parts and a dripless faucet. Urn and sugar and creamer are finished in lustrous chromium with bases and trimmings of contrasting black. Sugar and creamer are lined with dull chromium.

The all metal tray with convenient carrying handles is 20 inches long and 10 inches wide.

Here is a service that strikes a new note in up-to-the-minute coffee serving. Not only do the spherical shapes of the urn and sugar and creamer match perfectly but the whole service is executed in a harmonious design. For use on A. C. (alternating current) only.

THE "AFTER DINNER"

4931/12 Coffee Service
Patented

Watts 350

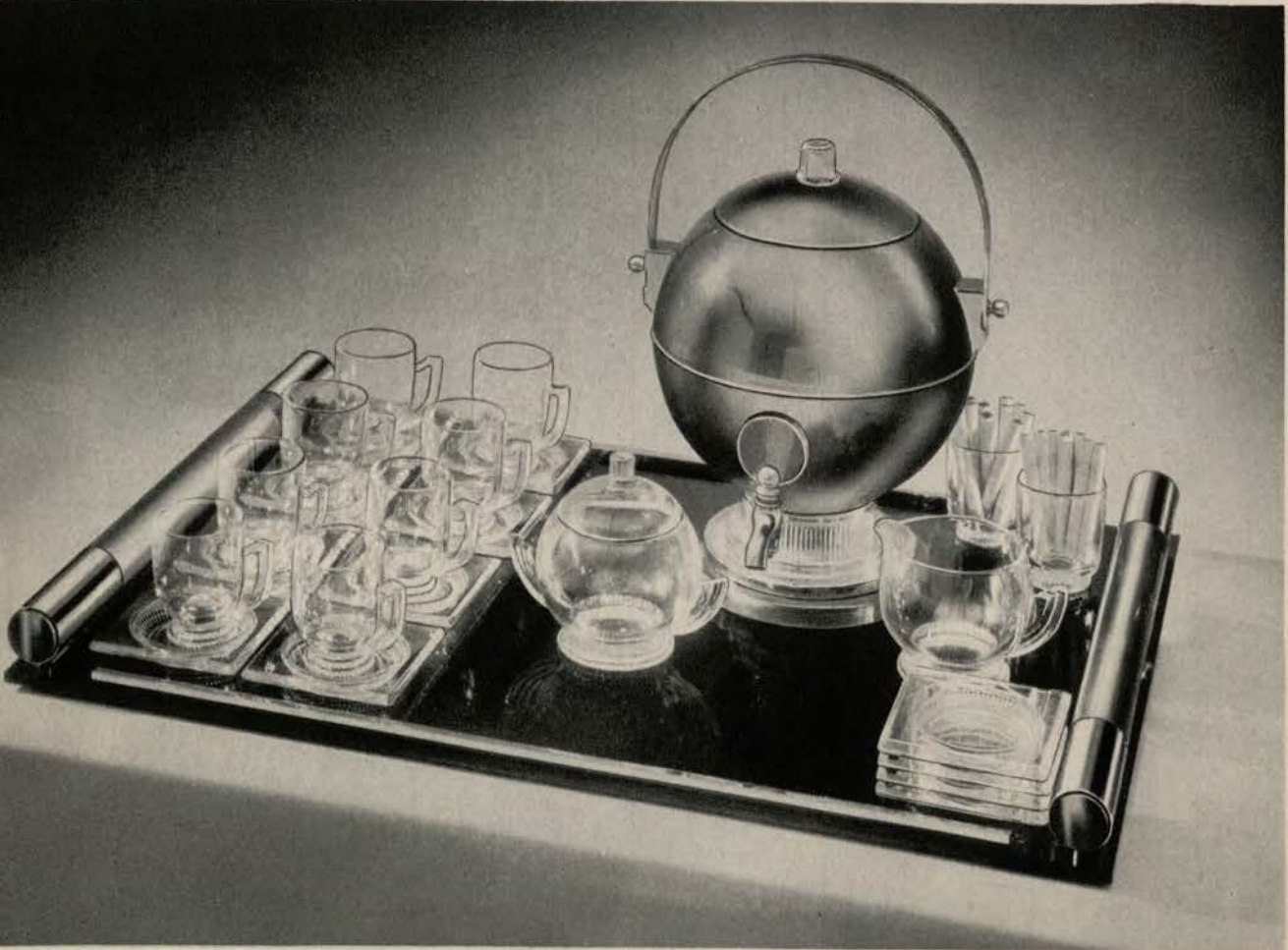
Shipping Weight 16 lbs.

Standard Package 1

The hospitably-minded home could wish for nothing more complete than the "After Dinner" coffee service—a 12-cup capacity spherical urn; eight highest quality crystal demi-tasse cups and saucers; a crystal sugar and creamer; two crystal cigarette holders and four crystal ash trays, all set forth on a large 16 x 24-inch chromium trimmed micarda tray, with solid crystal handles.

Here, certainly, are all the necessary accoutrements for the preparing and serving—in the grand manner—of "After Dinner" coffee. The 12-cup capacity of the urn means enough delicious coffee for 42 demi-tasse servings. If more coffee is needed the serving capacity of the urn may be increased to 16 cups by removing the inside parts. The entire service is a harmonious blending of chromium plate, crystal glass, and black. The same design is carried out in each piece.

Inside parts of the urn are of commercially pure aluminum. Heating unit of high quality nichrome wound mica element is protected against overheating by thermostatic control. For use on A. C. (alternating current) only.



THE JUBILEE

(With Two-Heat Stove and "Off" Switch)

836 Coffee Maker—6 Cups (36-ounce capacity) Height 13½ inches

838 Coffee Maker—8 Cups (48-ounce capacity) Height 13¾ inches

Watts: High 550, Low 100

Shipping Weight 5 lbs..

Standard Package 3

The Jubilee is the only glass coffee-maker that features the entire elimination of plug-pulling during the coffee-making process by means of a three-way switch in combination with a two-heat stove. Housed in a chromium plated case with ivory Arinite handles the scientifically built stove is equipped with: (1) bottom draft ventilation for cooling at the proper speed; (2) two helically wound nichrome elements—one for high heat and the other for low; and (3) a three-position switch. "High" for heating the water and forcing it up into the upper bowl; "Off" for returning the beverage to the lower bowl; and "Low" for keeping the coffee piping hot.

The cover on the upper bowl is chromium plated and mounted with an ivory Arinite knob. After the coffee has been made, the cover may be inverted and used as a holder for the inverted upper bowl. The all-chromium cover on the lower bowl may be lowered after the upper bowl is removed. It prevents loss of coffee flavor. A thumb lever makes it easy to raise the cover for pouring.

The lower bowl is of full six or eight-cup capacity, based on standard six-ounce measuring cups. Guide lines for filling are etched on the side. The upper bowl is larger to compensate for liquid expansion during coffee making. Both bowls are of finest heat-resisting glass, shaped to make cleaning easy. An efficient sanitary white porcelain filter with a convenient lifting handle is held in place by a corrosion-proof monel metal spring. For use on A. C. (alternating current) only.



THESE FEATURES



Upper bowl removed and placed on inverted chromium and ivory Arinite cover.



Coffee ready to serve. Chromium cover lowered to conserve flavor.



Scientific two heat stove with "off" switch and bottom draft ventilation.

THE PURITAN

816 Electric Coffee Maker—6 Cups (36-ounce capacity)

16 Range Model

818 Electric Coffee Maker—8 Cups (48-ounce capacity)

18 Range Model

Watts 550

Shipping Weight: Electric Models 5 lbs., Range Models 3 lbs.

Standard Package 3

The electric model's gracefully shaped heat resisting glass bowls and chromium finish with walnut bakelite trimmings make it most attractive. Coffee is brewed with the water at the correct coffee-making temperature. The Puritan is available in either 6 or 8-cup models. The capacities are based on six-ounce measuring cups. The electric stove with its bottom draft ventilation makes for proper cooling speed—an important factor. Filter of sanitary white porcelain held in position by a corrosion-proof monel metal spring. Extra size in upper bowl allows for liquid expansion.

Range models are exactly the same as above except that the upper bowl cover and the electric stove are not furnished.



THE PIONEER

110 Automatic Toaster
Patents Pending

Watts 695

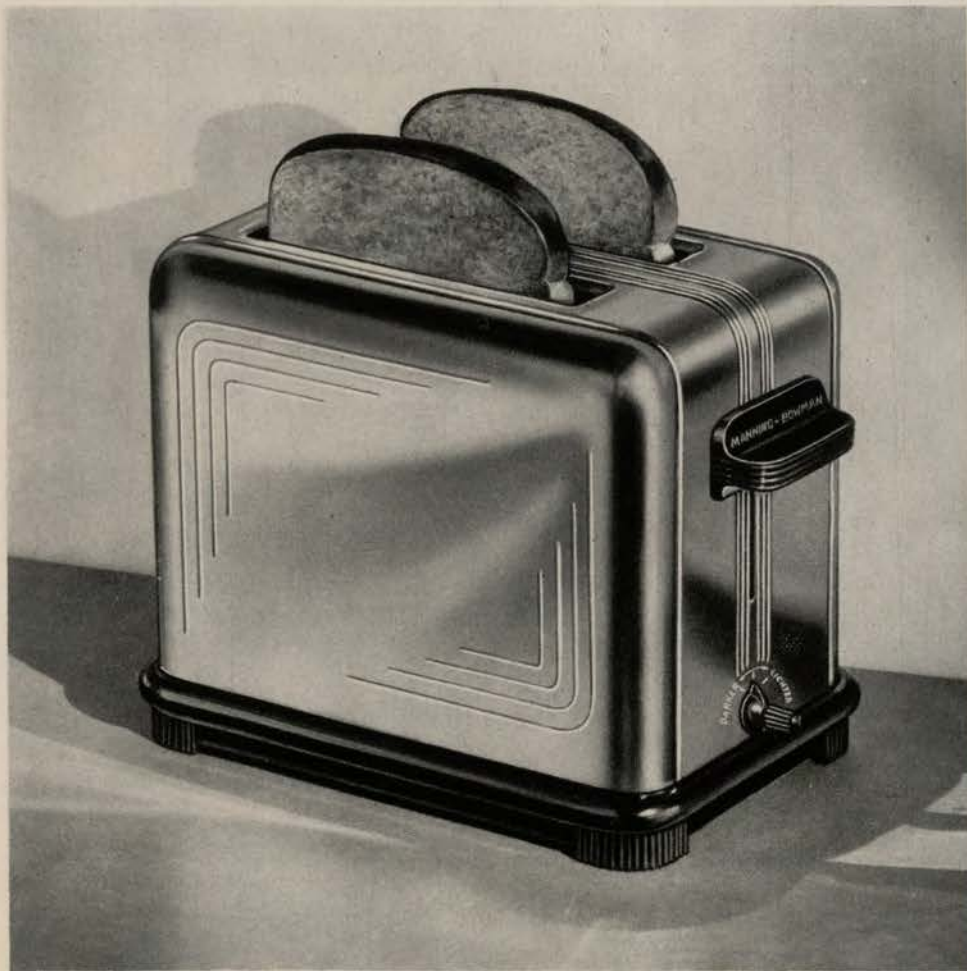
Shipping Weight 6½ lbs.

Standard Package 3

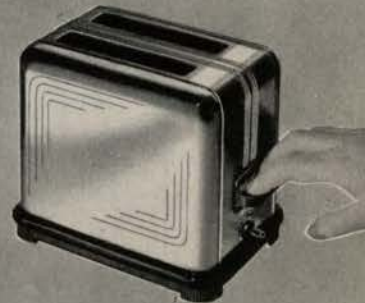
Up pops the toast! No watching! No burned toast. Toast the way YOU like it—ALL THE TIME. And for the family of differing tastes—this toaster has an exclusive inspector device. With it you can remove one slice without disturbing the toasting of the other. No other toaster has this feature.

It is light in weight, compact, and sturdily constructed. Its low wattage heating elements mean economical operation. Convenient "off" switch.

Harmonious Pioneer Pattern design in Manning-Bowman chromium plate trimmed in walnut bakelite. Permanently attached long-life 10,000 cycle cord to match. Overall dimensions 8¼ inches long, 7 inches high, 5½ inches wide.



THESE FEATURES



Features easy starting. Simply set the control knob and press down the front handle.



Raise front handle to inspect or remove toast at any time.



THE JUBILEE

1120 Toaster Service

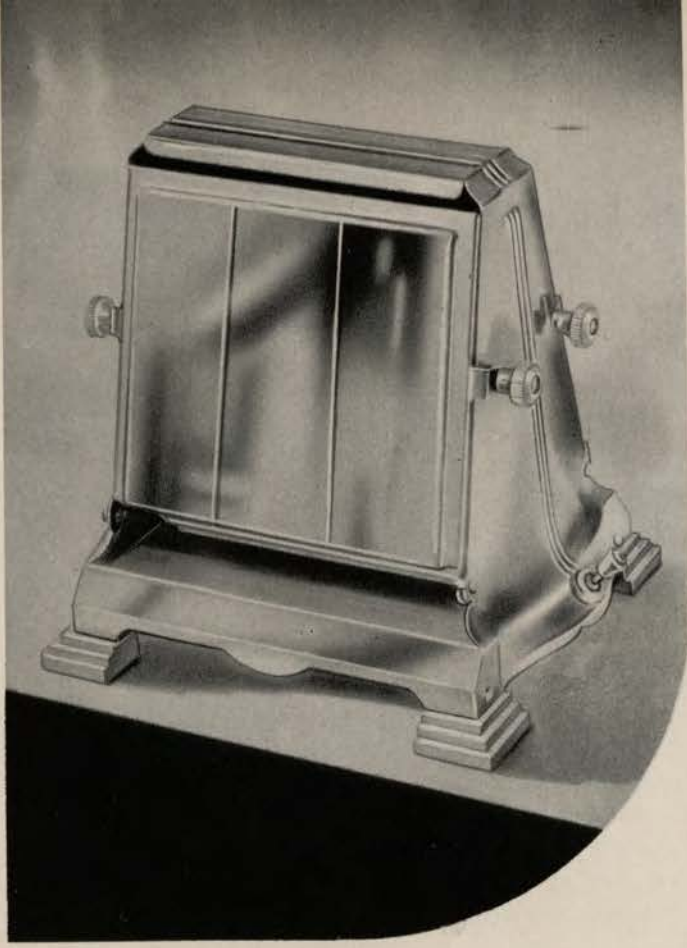
112 Automatic Toaster Only
Patents Pending

Watts 695
Standard Package 3

Shipping Weight: Service 16½ lbs.
Toaster Only 6½ lbs.

Entertaining becomes a pleasure with the Jubilee toaster service. Certainly nothing could more completely add to the success of breakfasts, buffet parties, or in-between luncheons. The automatic toaster quickly turns two full slices of bread into toast that pops up when done just as you want it, "light" or "dark", according to how you have set the control dial in the base. Overall dimensions of the toaster are: 8¼ inches long, 7 inches high and 5½ inches wide.

Besides the automatic toaster the service includes a triple compartment crystal relish dish with three glass serving spoons, a neat metal serving tray and a solid walnut cutting board, all on a large, natural walnut serving tray, 25 inches by 15 inches. The same neat decorative motif has been carefully carried out in each and every appointment, thereby making the entire service an appealing concord of design. Relish dish, toaster and serving tray have ivory trim. Toaster may be purchased separately.



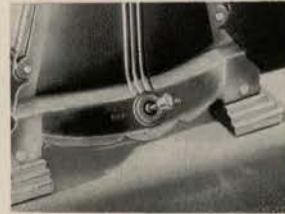
THE JUBILEE

88 Toaster (With Enclosed Switch)
Patented

Watts 420 Shipping Weight 3 lbs.
Standard Package 6

The switch encased in the base is a most practical and convenient feature of the Jubilee Toaster. Simply put two slices in the Jubilee Toaster, throw the lever to "on" position; lower the doors to turn the bread after one side is toasted; then throw the lever to "off" when the toast is made. All as simple as that—no plug-pulling necessary.

Beautifully finished in lustrous non-tarnishing chromium, with ivory Arinite feet and knobs. Height 7½ inches.



This "on-off" switch affords convenient finger-tip toasting control.

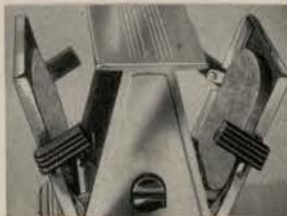
THE "INSPECTOR"

85 Toaster (Pioneer Pattern)
Patented

Watts 420 Shipping Weight 3 lbs.
Standard Package 6

Popular acclaim greets the toast "Inspector" wherever it goes. A turn of the dial opens the doors wide enough to permit inspection of the toast. No other toaster has this feature. When toast is done to suit the taste, lowering the doors all the way, turns the bread automatically for toasting on the other side.

This Inspector toaster is finished in chromium and trimmed with brown bakelite. High quality mica wound element. 7½ inches overall height.



Toast texture clearly visible by means of the patented inspection feature.



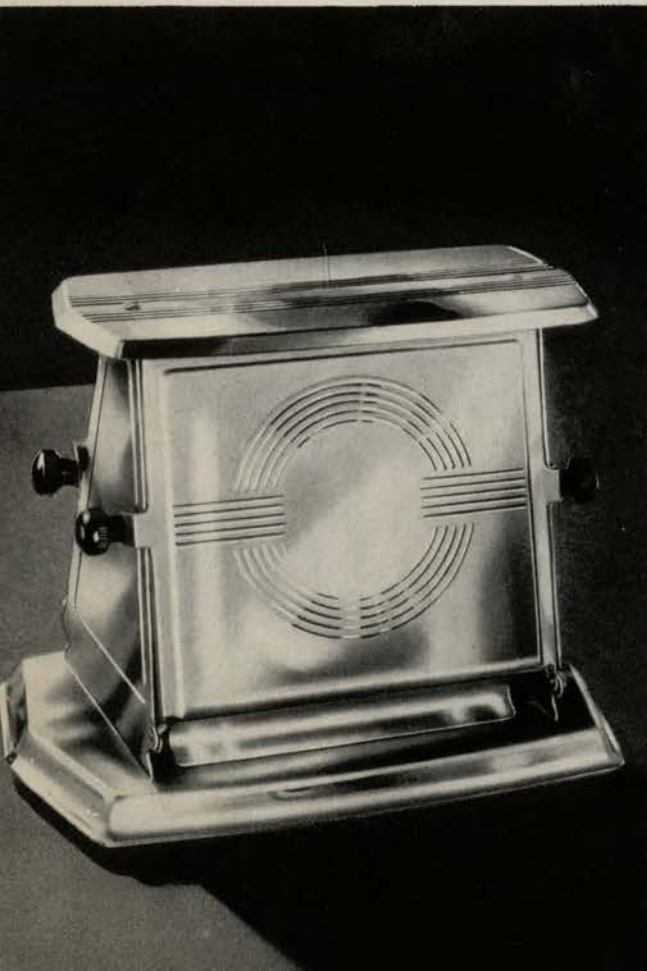
THE TRIUMPH

86 Toaster

Watts 420 Shipping Weight 3 lbs.
Standard Package 6

Here is an appealing toaster design by Manning-Bowman along more conventional lines. The circular decorations on the doors subtly relieve the otherwise straight line treatment. The wide flat top harmonizes with the base and adds to the sturdy business-like appearance of the whole.

Finished in brilliant chromium with walnut handles and feet, it is one of today's outstanding toaster values. Fast mica wound type nichrome heating element. Height 7½ inches.



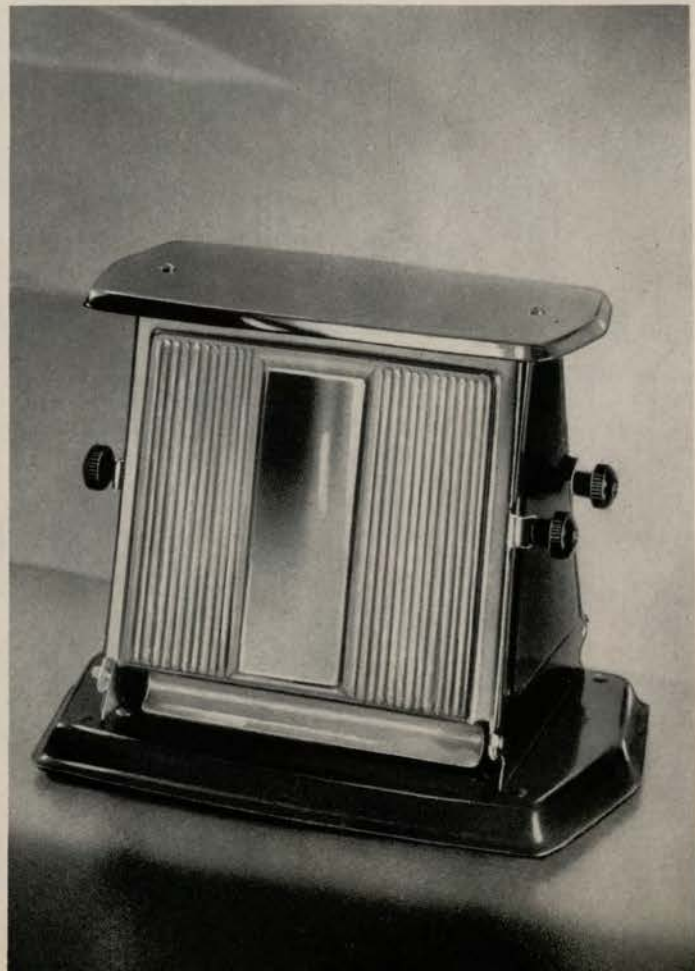
THE DU-TONE

87 Toaster

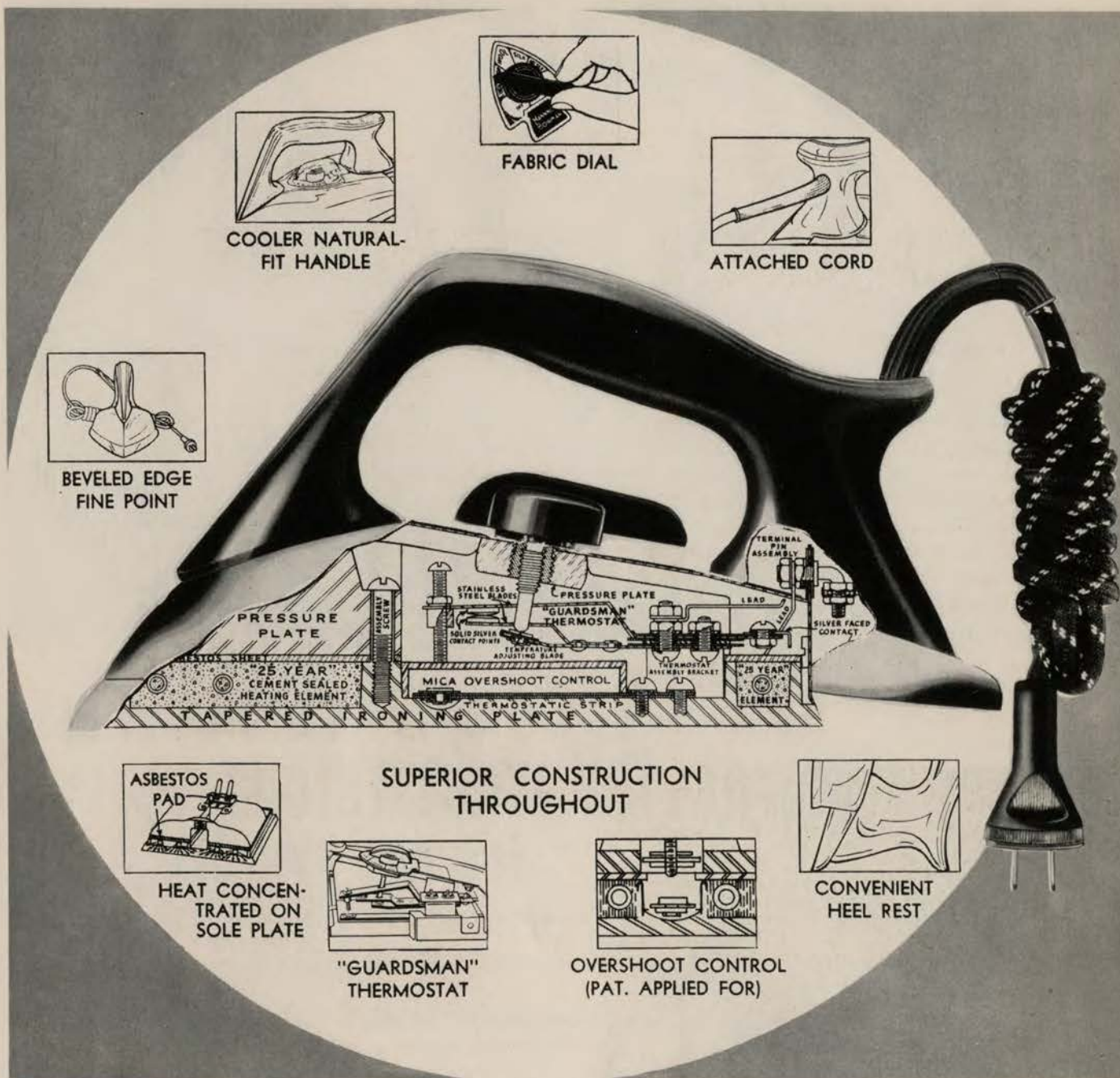
Watts 420 Shipping Weight 3 lbs.
Standard Package 6

An outstanding toaster, of popular design, attractively finished, speedy in operation, and an unusual value at the price. Base and sides are black, heat resisting baked enamel while the doors and top are of non-tarnishing chromium. Feet and handles are specially moulded to match the rest of the toaster.

Speedy nichrome wound mica unit; heat conserving solid metal doors with the reversible feature that turns the bread for toasting on the other side. Height 7½ inches.



AUTOMATIC FLATIRONS



UNEXCELLED FEATURES OF MANNING-BOWMAN

1. "26-Year" Fast-Heating cement-imbedded Element
2. Cool Natural Fit Handle
3. "Marksman" Heat Control
4. "Guardsman" Thermostat
- *5. Overshoot Control (Pat. applied for)
6. Perfect Heat Distribution
7. Perfect Balance
8. 10,000 Cycle Long Life Cord
9. Heat-Proof Rubber Guard
10. Convenient Heel Rest
11. Fine Point—Beveled Edge
12. Aero-Glide Design
13. New Tapered Ironing Plate
14. Superior Chromium Finish

*OVERSHOOT CONTROL

Manning-Bowman's "Overshoot Control" is a revolutionary improvement on high wattage automatic irons. This device (patent applied for) cuts down the "overshoot" and "undershoot" hitherto unavoidable in automatic irons because of structural requirements. In other automatic irons the heat of the ironing surface considerably exceeds the selected temperature before the thermostat cuts off the current. This excess heat or overshoot often causes scorching. Conversely undershoot means inefficient ironing and increased labor. These problems are solved by the Overshoot Control with no increased wear of contact points. Transparent to infra-red rays, it transmits heat simultaneously to the thermostat and ironing surface, giving positive and instantaneous thermostatic control at all ironing temperatures.



THE ACE LIGHTWEIGHT

1492 Automatic Iron
Patented and Other Patents Pending

Watts 1000

Standard Package 3

Shipping Weight 5 lbs.

A superior, fully automatic, lightweight flatiron—for finer, faster ironing with less effort. It weighs only 4 pounds, affording greater ironing ease.

The higher 1000 "26-Year" fast-heating cement-imbedded element gives greater speed and efficiency than models operating on lower wattage. For years this heating element of superior construction has given unprecedented service.

The "Marksman" heat control, located conveniently at the finger tips, is easily operated and assures the correct ironing temperatures for all kinds of fabrics. These correct ironing temperatures are in turn maintained by the "Guardman" thermostat in combination with the overshoot control. An "off" switch is also especially convenient.

Another new development is the tapered ironing plate designed for easier, more efficient ironing and affording perfect heat distribution under all conditions. Because of this new ironing plate the iron actually glides with an easy, natural motion. Its beveled edge and fine point are ideal for working around buttons, under pleats, etc. The corners on the back of the ironing plate permit ironing on the backward stroke as well as on the forward stroke and prevent wrinkles. The cool, full sized handle and perfect balance of the iron add to its ease of operation. It is equipped with the finest 7-foot 10,000 cycle attached cord and durable plug. For use on A. C. (alternating current) only.



THE IRON QUEEN

1490 Automatic Iron
Patented

Watts 700 Shipping Weight 7 lbs.
Standard Package 3

Fabric dial, "off" switch, and style are the three outstanding features of this standard six-pound automatic flatiron that irons quickly and economically. Equipped with the superior 700 Watt "26-Year" fast-heating cement-embedded element. The "Marksman" heat control and "Guardman" thermostat assure the correct temperature for ironing all types of fabrics, from artificial silks to heavy linens. The ironing plate is so designed that the heat is perfectly distributed and its beveled edge and fine point make it an easy matter to iron around buttons, under pleats and between seams. The solid black handle is both cool and comfortable and combined with the perfect balance of the iron, does away with much of the usual ironing toil. The sturdy heel rest is a great convenience. Finished in lustrous non-tarnishing chromium, with six-foot 10,000 cycle cord and plug.

For use on A. C. (alternating current) only.

THE IRON KINGS

1489 LIGHTWEIGHT
Patented and Other Patents Pending

Watts 1000 Shipping Weight 5½ lbs.
Standard Package 3

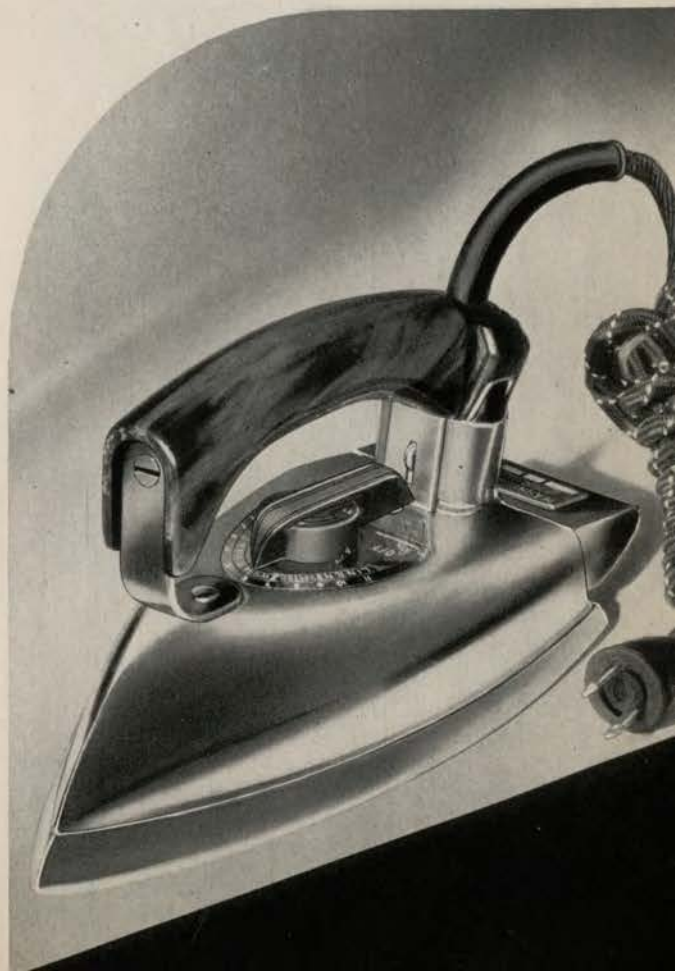
Weight 4 lbs.—Walnut handle with matching control knob and cord set. Finished in Manning-Bowman's superior chromium plate.

1488 MIDDLEWEIGHT
Patented and Other Patents Pending

Watts 800 Shipping Weight 6 lbs.
Standard Package 3

Weight 5 lbs.—Mahogany handle with adjusting knob and cord to match. Overall chromium plate finish.

The Iron King automatics are equipped with all the Manning-Bowman unexcelled features including the new overshoot control; "26-Year" fast-heating cement-embedded element; "Marksman" heat control; handy "off" switch; "Guardman" thermostat; beveled edge for buttons and pleats; convenient heel rest; lustrous durable chromium finish and 6-foot 10,000 cycle long-life cord. For use on A. C. (alternating current) only.



THE AUXILIARY

1584 Flatiron

Watts 300

Shipping Weight 4 lbs.

Standard Package 3

The Auxiliary Iron weighs only three pounds and can be put right into the traveling bag for the week-end trip or for a prolonged visit. And on such a trip what a convenience it is for keeping clothes neatly pressed. Just the thing, too, for ironing the miscellaneous light fabrics that require pressing from day to day in every household.

The Auxiliary is beautifully finished in non-tarnishing chromium, with a cool, comfortable solid walnut handle and with brown cord to match. Like all other Manning-Bowman irons, it too is equipped with the famous "26-Year" fast-heating cement-imbedded element and the convenient "tilt-back" heel rest.



THE IRON MAID

1585 Flatiron

Watts 525

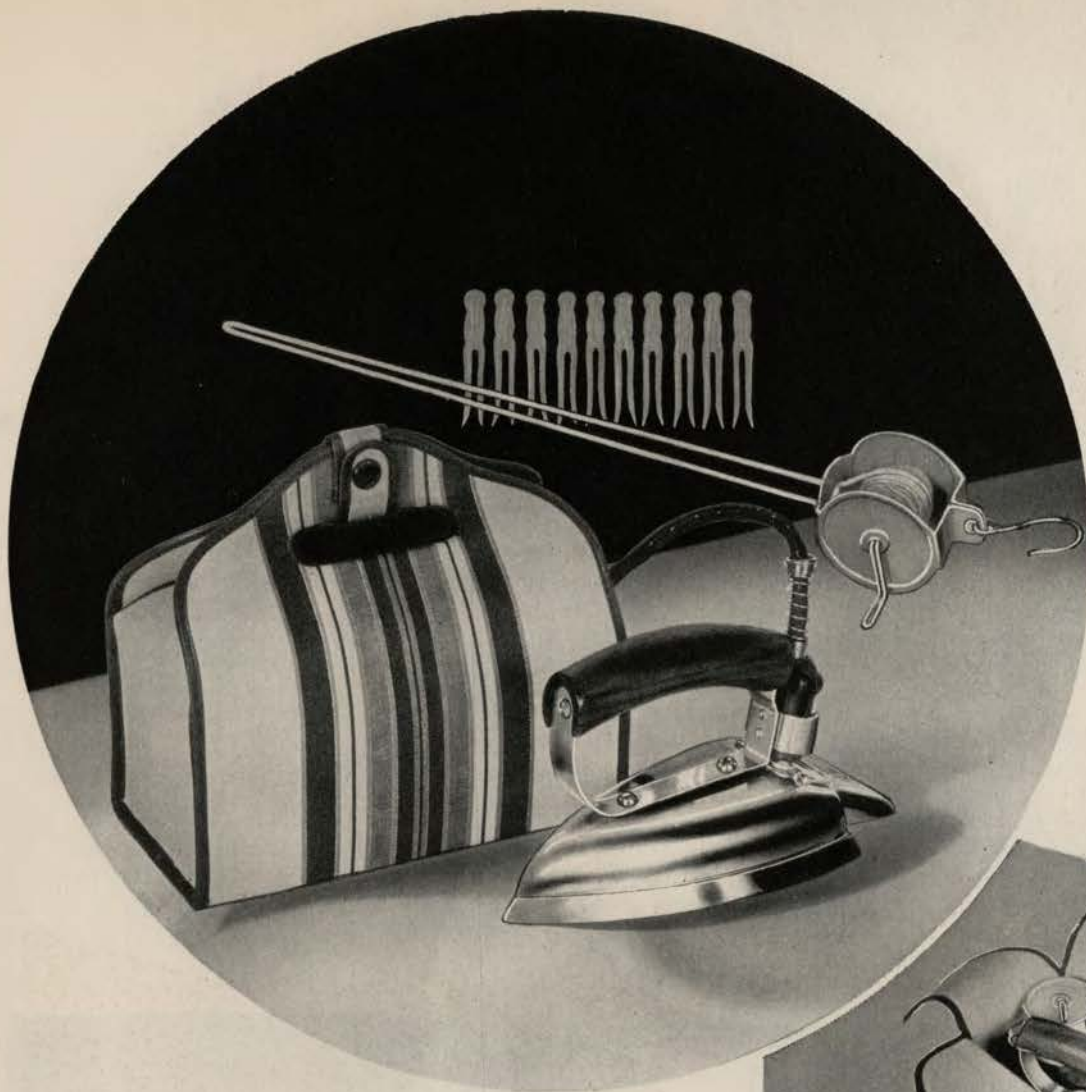
Shipping Weight 6 lbs.

Standard Package 6

Without automatic features but in all other respects a superior flatiron—especially at the unusually low price. Like the other Manning-Bowman irons it is equipped with the famous "26-Year" fast-heating cement-imbedded element that for 26 years has proved its superiority; the ironing plate has the convenient beveled edge and fine ironing point; weighs 5 pounds; the comfortable walnut handle is remarkably cool; the heel bracket permits the iron to be readily tilted back when not in use.

Finished in Manning-Bowman chromium plate that will not tarnish. Cord and plugs of superior quality.





THE TRAVEL

IRONING SET

75 Ironing Set
 Watts 300 Shipping Weight 5 lbs.
 Standard Package 3

Farewell to "travel wrinkles." A small suitcase corner holds this compact set. With it Lady Traveler can launder light things — keep clothes neatly pressed — while away from home. It's ideal, too, for overnight washings at home.

The iron is the regular No. 1584 described on page 26. The clothesline is 16 feet long. It is wound on a small reel with large attaching hook. There are 10 small clothespins.

Styled in the vogue of modern "airplane luggage" the carrying case is striped in dark brown, green and red on a natural shade background. The snap-fastened top flaps form a natural carrying handle. An asbestos insert permits packing the iron while hot without fear of scorching.

Overall size: 7½ x 5 x 4.



Snug and compact is the complete Travel Ironing Set in its smart "airplane luggage" case.



Gift Boxed: Each Travel Ironing Set is smartly boxed in an attractive two-toned Gift Box.

HANDY HEATER

1201 Heater (11-inch Reflector)

Watts 660

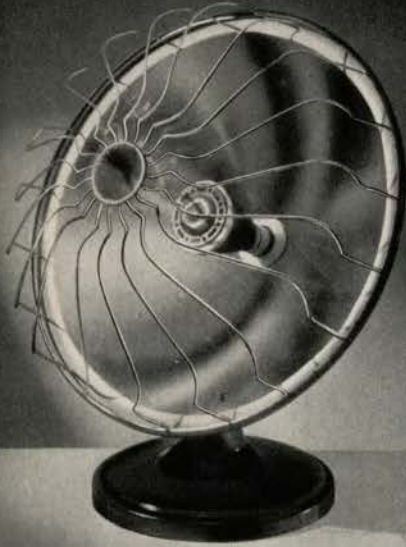
Shipping Weight 5 lbs.

Standard Package 1

On cool mornings or evenings during all seasons of the year, the "Handy" Heater is mighty handy, indeed. No need to start the house heating system. The "Handy" Heater has a convenient carrying handle and it is light in weight. It can be carried to any spot where heat is needed whether it's in the breakfast nook, bathroom, den, library or alongside of the radio.

The polished copper reflector is 11 inches in diameter and throws a warm flow of comforting heat from the high quality nichrome wire element.

Dark brown enamel base with beige enamel on back of bowl. Permanently attached 7½-foot cord. Overall dimensions: 15½ inches by 11¾ inches.



HANDY HEATER

1202 Heater (14-inch Reflector)

Watts 1000

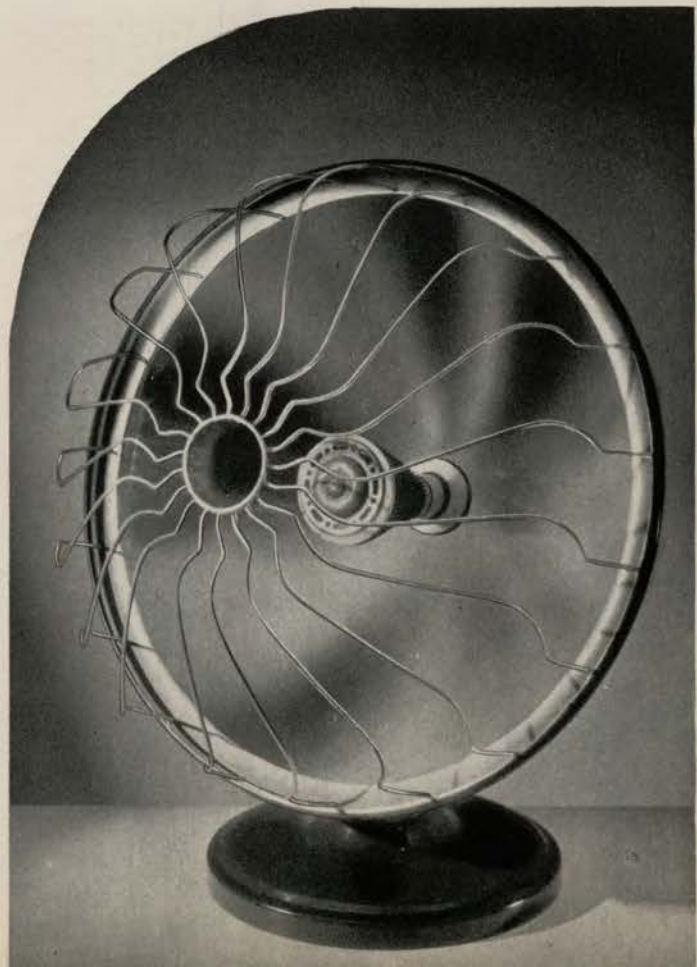
Shipping Weight 7 lbs.

Standard Package 1

A stronger, more powerful heater for warming larger areas, this "Handy" Heater is equipped with a copper reflector 14 inches in diameter. Cool "drafts" and "chills" are soon dispelled by the onslaught of the vigorous infrared heat rays that are driven out by the durable nichrome wire element.

Like the smaller model it has a convenient carrying handle that makes it thoroughly portable. Base is enameled dark brown and the back of the bowl is enameled beige. 7½-foot dark brown cord is permanently attached.

Overall size: 17⅝ inches by 14 inches.



THE JUBILEE

103 Buffet Server

Watts 120

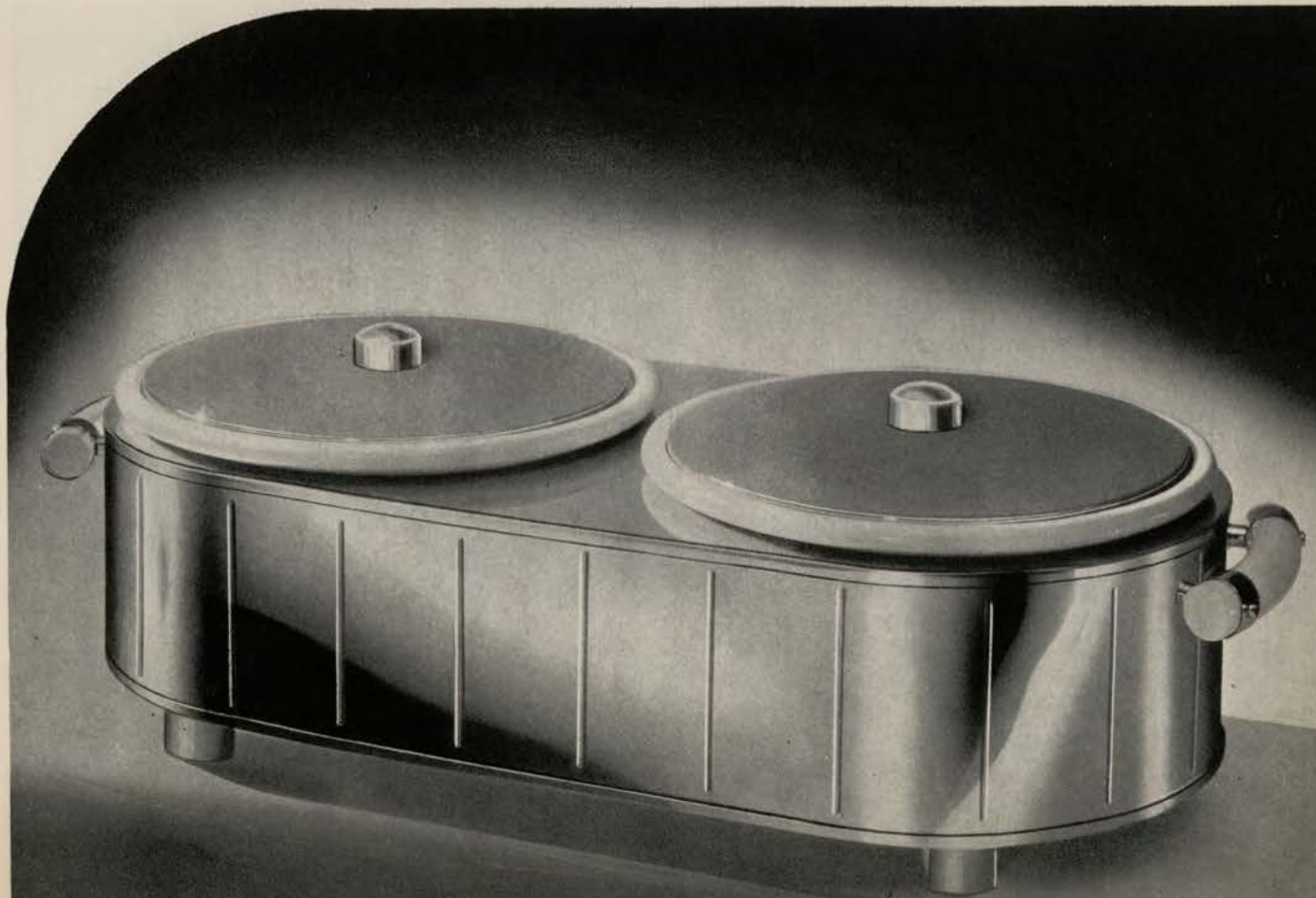
Shipping Weight 25 lbs.

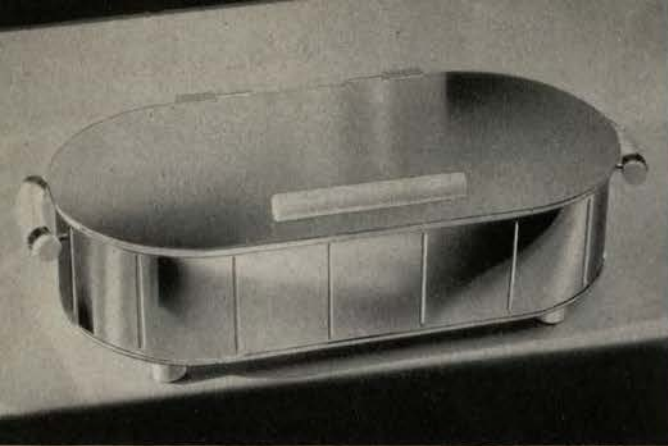
Standard Package 1

The Buffet Server has met with such instantaneous acceptance because it exactly fills a need on the part of those hostesses who entertain graciously. Always there was the question of how to keep foods hot at large parties and for late arrivals; or for breakfast with its irregular schedule. Of course, it could be done "after a fashion" with a make-shift arrangement, but here is an electric appointment which adds convenience and charm to any party for both the guests and hostess. And—it's ideal for keeping salads cold in summer—simply disconnect the electric current and pack the water container with cracked ice or ice cubes.

And there need be no fear of "running short" because the two large ivory vitreous china linings hold five pints each. In other words, ample capacity for a complete meal including sauce or gravy.

Finished in shimmering chromium with knobs, feet and handles of ivory Arinite, the Buffet Server is a simple appliance to use. Merely fill it with hot water up to the indicated level and the electrical unit keeps the water, surrounding the linings, at a constant temperature. The Buffet Server is 25 inches long, 6 inches high and 10 inches wide.





THE JUBILEE

104 Warming Oven

Watts 120 Shipping Weight 17 lbs.

Standard Package 1

Everywhere an enthusiastic welcome greets one of Manning-Bowman's newest appliances—The Warming Oven. To the hostess it is the answer to that never-ending question—how to keep foods piping hot. To the guest—the sight of it on the buffet is the assurance of deliciously hot food.

And it's so roomy too. The oven is 25 inches long, 6 inches high and 10 inches wide. Enough room for dozens of rolls, biscuits, or pop overs. Ample capacity for 2 dozen 9¾-inch plates. Using it to keep vegetables, meats, or gravies hot the Warming Oven will hold two large dishes.

Overall chromium plate finish with ivory Arinite handles and feet. Strong nichrome wire element.

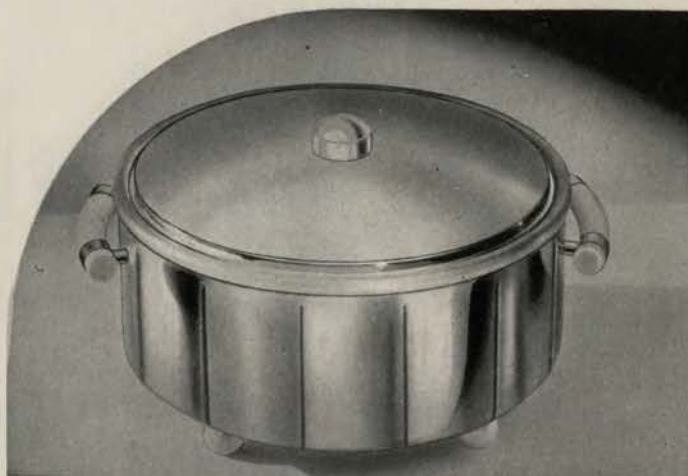
THE JUBILEE

101 Buffet Serverette

Watts 75 Shipping Weight 7 lbs.

Standard Package 1

Keeps foods and liquids of all kinds piping hot for hours on end eliminating all the usual confusion in serving large parties—or late arrivals at any meal. Just the thing for serving breakfast to a houseful of guests who straggle down all morning long. In addition to its ability to keep foods hot, it will keep 'em cold too—simply by disconnecting the electric current and packing the container with cracked ice or cubes. The genuine Pyrex linings may also be used for baking the food. Each lining holds a full quart. Shimmering chromium, with knob, feet and handles of ivory Arinite. Overall dimensions: diameter 9¾ inches, height 5¾ inches.



EGG COOKER

1076 Egg Cooker
Patented

Amps. 3 Shipping Weight 4 lbs.
Standard Package 3

A most convenient little table appliance. Eggs in any style may be prepared right at the table with this efficient cooker. A small amount of water poured into the base makes the electrical contact and is almost immediately turned into steam which does the actual cooking. Soft boiled, medium boiled, or hard boiled eggs can be done out of the corner of your eye while reading the morning paper. A porcelain dish with handle is supplied for frying, scrambling, shirring eggs, etc.

Finished in lustrous chromium with walnut handles and vitrified glazed porcelain lining, this appliance will round out any household equipment. A. C. (alternating current) only.



BOTTLE WARMER

1075 Bottle Warmer
Patented

Amps. 3 Shipping Weight 3 lbs.
Standard Package 3

An attractively designed, thoughtfully engineered and carefully manufactured appliance for heating baby's bottle. Stumbling downstairs to the kitchen in the dead of night to heat the "pride and joy's" bottle is no longer necessary. Connect the plug to a convenient outlet and in no time the bottle is being heated. A false bottom suspends the bottle in the water and prevents breakage.

Finished in non-tarnishing chromium with a vitrified white porcelain liner which has rounded edges for easy cleaning. A. C. (alternating current) only.





No. 1 Cord used in
No. 10 Assortment.



No. 2 Brown and No. 3 Black
cords used in No. 23 Assortment.

CORD SETS

All Manning-Bowman Cord Sets are made of the finest materials for long wear and efficient operation. They are listed with Underwriters' Laboratories, Inc. Reexamination Service.

No. 10 DISPLAY ASSORTMENT

6 Cord Sets in Display Container

Six 7-foot long cord sets are packed individually in a colorful counter display. All are superior 10,000 cycle type cords with heavy duty black glazed cotton coverings and white tracers. The attachment plugs are assembled with sturdy expanding-type metal springs rather than screws. Silver plated terminal contacts—pliable rubber wall plugs—heat resisting rubber cord protectors. Sold six cord sets to a display container.

No. 23 DISPLAY ASSORTMENT

6 Cord Sets in Display Container

Six 6-foot long cord sets of the 3,000 cycle type with the new type miniature attachment plugs are packed individually in the attractive display container. Three sets are of brown art silk with green tracers while the other three are black art silk with white tracers. Sold six assorted sets to a display container.

TERMS

2% 10 days from date of shipment, net 30 days.

GUARANTEE

All Manning-Bowman appliances are thoroughly tested before leaving our factory to make sure they are in perfect condition. Exclusive of cord and plugs, they are guaranteed against factory defects for one year provided they are used according to the instructions accompanying each appliance. Under these conditions we agree to repair or replace any defective parts if the appliance is returned to us prepaid, or to any of our authorized service stations.

UNDERWRITERS' LABORATORIES, INC.

All Manning-Bowman appliances are listed with the Underwriters' Laboratories, Inc. Reexamination service.

VOLTAGE INFORMATION

Manning-Bowman appliances are made to operate on a voltage range of from 110 to 125. They should not be used on any other voltage.

SPECIAL VOLTAGES

Some appliances can be furnished for use on 32 volt circuits for which there is an extra charge of 50c list. They are as follows:

URNS AND PERCOLATORS (except those equipped with thermostats).

SPECIAL NOTE—When supplied for 32 volt circuits these appliances cannot be equipped with fuse-link protective devices.

FLATIRONS—(except Automatic Models).

SERVICE STATIONS

For the convenience of customers and in the interest of speedier repair service, Manning, Bowman & Co. maintains the following service stations. Located at strategic points throughout the country, they will provide experienced capable service at nominal cost.

SPECIAL NOTE—All heating pads should be returned to the factory because special equipment is required to repair them.

CALIFORNIA

Los Angeles, Motor & Machinists Supply Co.,
230 South San Pedro St.

San Diego, J. F. Zwiener Electrical Company,
229 "B" St.

San Francisco, Manning, Bowman & Co.,
150 Post St.

CANADA

Toronto, Ontario, Houghton's Ltd.,
313 Church St.

COLORADO

Denver, Hendrie & Bolthoff Mfg. & Sup. Co.,
1635 17th St.

CONNECTICUT

Meriden, Manning, Bowman & Co.

DISTRICT OF COLUMBIA

Washington, C. Schneider's Sons,
726 11th St., N. W.

GEORGIA

Atlanta, Graybar Electric Co., Inc.,
167 Walton St., N. W.

ILLINOIS

Chicago, Manning, Bowman & Co.,
Merchandise Mart

MINNESOTA

Minneapolis, E. B. Kelley & Co.,
214 South 7th St.

MISSOURI

St. Louis, Brandt Elec. Co.,
904 Pine St.

NEW YORK

Buffalo, Wangler Electric Co.,
2329 Main St.

New York City, Manning, Bowman & Co.,
200 Fifth Avenue

OREGON

Portland, Morrison Elec. Sup. Co.,
1236 S. W. Washington St.

PENNSYLVANIA

Pittsburgh, Quick Service Electric Co.,
Jenkins Arcade

TEXAS

Dallas, Gable Electric Service,
6821 Snider Plaza

WASHINGTON

Seattle, Howell's Elec. & Sup. Co.,
522 Union St.

Spokane, Maxwell & Frank,
First at Wall St.

MANNING, BOWMAN & CO.

MERIDEN, CONNECTICUT

For any occasion



Manning-Bowman
ELECTRIC APPLIANCES